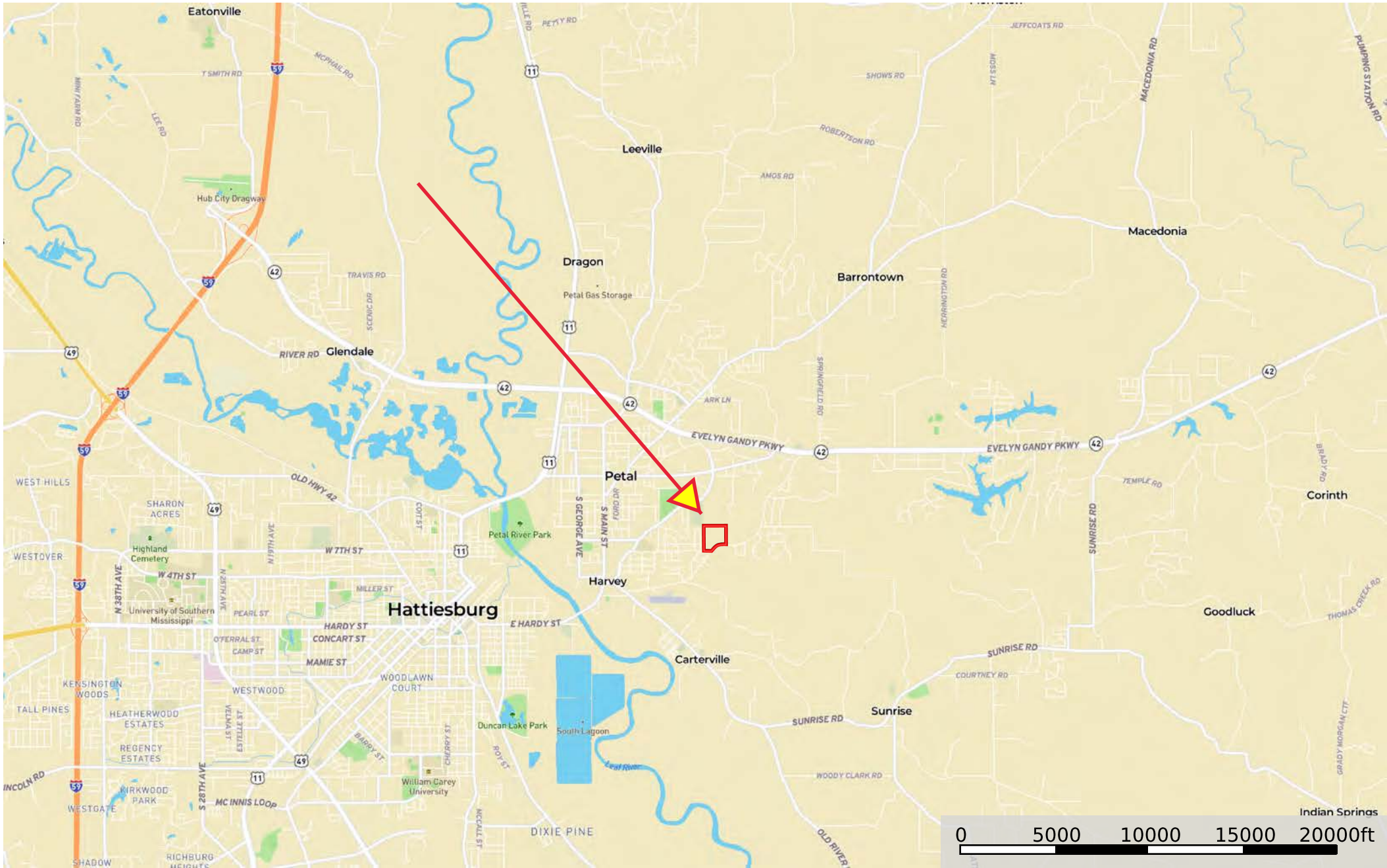

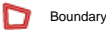
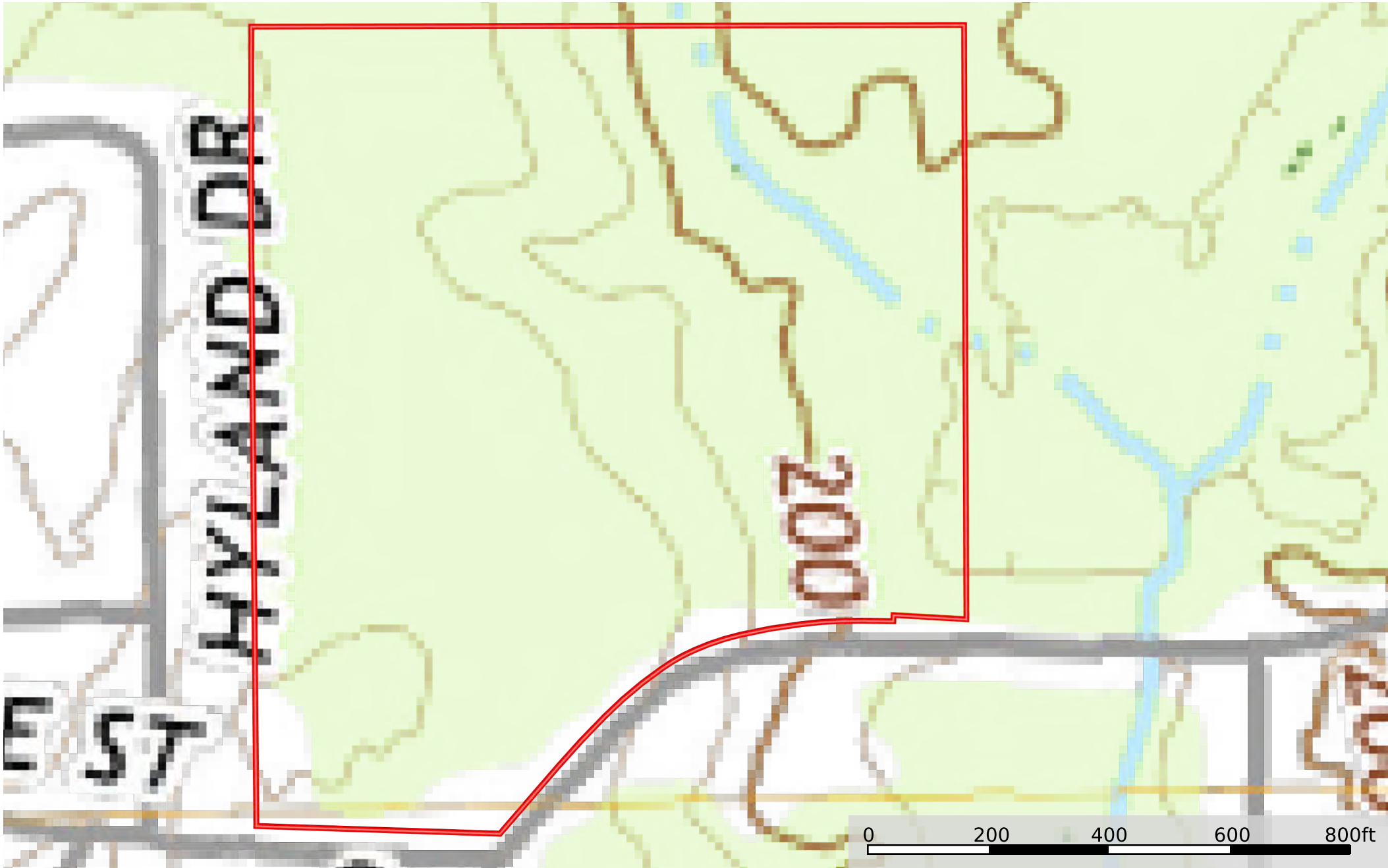



Demski 35
Forrest County, Mississippi, 35 AC +/-



 Boundary






 Boundary

Demski 35
Forrest County, Mississippi, 35 AC +/-



 Boundary

Boundary 31.35 ac

SOIL CODE	SOIL DESCRIPTION	ACRES	%	CPI	NCCPI	CAP
PtB	Prentiss loam, 2 to 5 percent slopes	12.98	41.4	0	52	2e
MbC	McLaurin loamy sand, 5 to 8 percent slopes	8.52	27.18	0	54	3e
HeE	Heidel sandy loam, 12 to 30 percent slopes	4.93	15.73	0	10	7e
Bf	Bibb silt loam	2.03	6.48	0	52	5w
HeD	Heidel sandy loam, 8 to 12 percent slopes	1.98	6.32	0	43	4e
MbB	McLaurin loamy sand, 2 to 5 percent slopes	0.91	2.9	0	50	2e
TOTALS		31.35(*)	100%	-	45.31	3.38

(*) Total acres may differ in the second decimal compared to the sum of each acreage soil. This is due to a round error because we only show the acres of each soil with two decimal.

Capability Legend

Increased Limitations and Hazards

Decreased Adaptability and Freedom of Choice Users

Land, Capability

	1	2	3	4	5	6	7	8
'Wild Life'	•	•	•	•	•	•	•	•
Forestry	•	•	•	•	•	•	•	
Limited	•	•	•	•	•	•	•	
Moderate	•	•	•	•	•	•		
Intense	•	•	•	•	•			
Limited	•	•	•	•				
Moderate	•	•	•					
Intense	•	•						
Very Intense	•							

Grazing Cultivation

(c) climatic limitations (e) susceptibility to erosion

(s) soil limitations within the rooting zone (w) excess of water