

Silver Creek Ranch

ONLINE REAL ESTATE AUCTION

Bidding Opens November 20th and Ends November 30th at 6:00 PM (AZ Time)

Register and Bid at www.AzLandAuction.com

These are the parcels offered in the November 30, 2022 Auction. All parcels are located in Cochise County, Arizona.

LOT 1 (Parcel #1): 35.27+/- acres. Assessor Parcel Number 405-48-004.
Silver Creek Ranch Lot 171. Annual tax assessment \$406.

LOT 2 (Parcel #2): 43.13+/- acres. Assessor Parcel Number 405-48-005.
Silver Creek Ranch Lot 172. Annual tax assessment \$324.

LOT 3 (Parcel #3): 39.34+/- acres. Assessor Parcel Number 405-59-010.
Silver Creek Ranch Lot 87. Annual tax assessment \$360.

LOT 4 (Parcel #4): 35.99+/- acres. Assessor Parcel Number 405-59-016.
Silver Creek Ranch Lot 93. Annual tax assessment \$292.

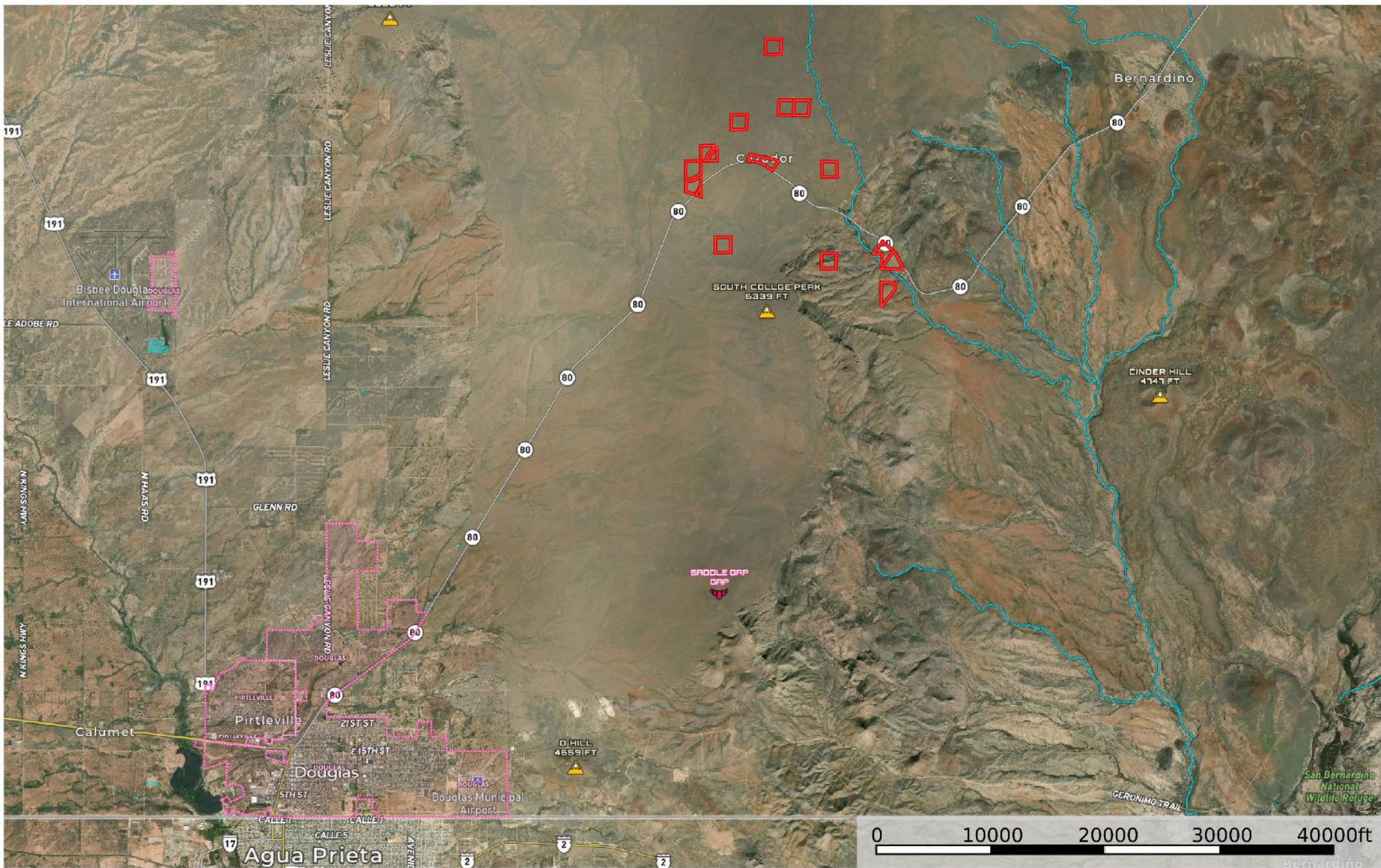
LOT 5 (Parcel #5): 35.99+/- acres. Assessor Parcel Number 405-59-021.
Silver Creek Ranch Lot 98. Annual tax assessment \$365.

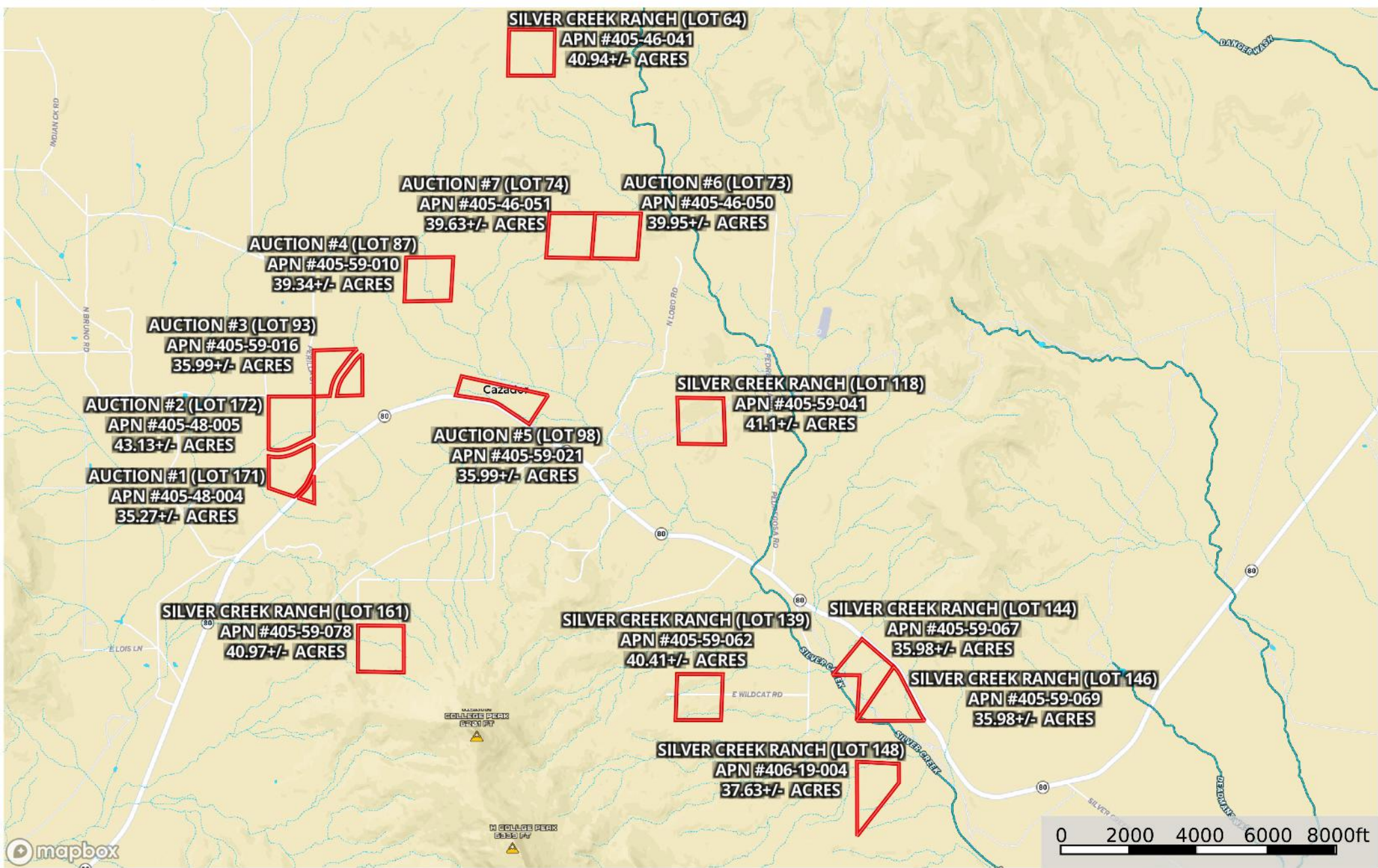
LOT 6 (Parcel #7): 39.95+/- acres. Assessor Parcel Number 405-46-050.
Silver Creek Ranch, Lot 73. Annual tax assessment \$324.

LOT 7 (Parcel #8): 39.63+/- acres. Assessor Parcel Number 405-46-051.
Silver Creek Ranch, Lot 74. Annual tax assessment \$324.
4455 E Hummingbird Rd, Douglas, AZ 85607.

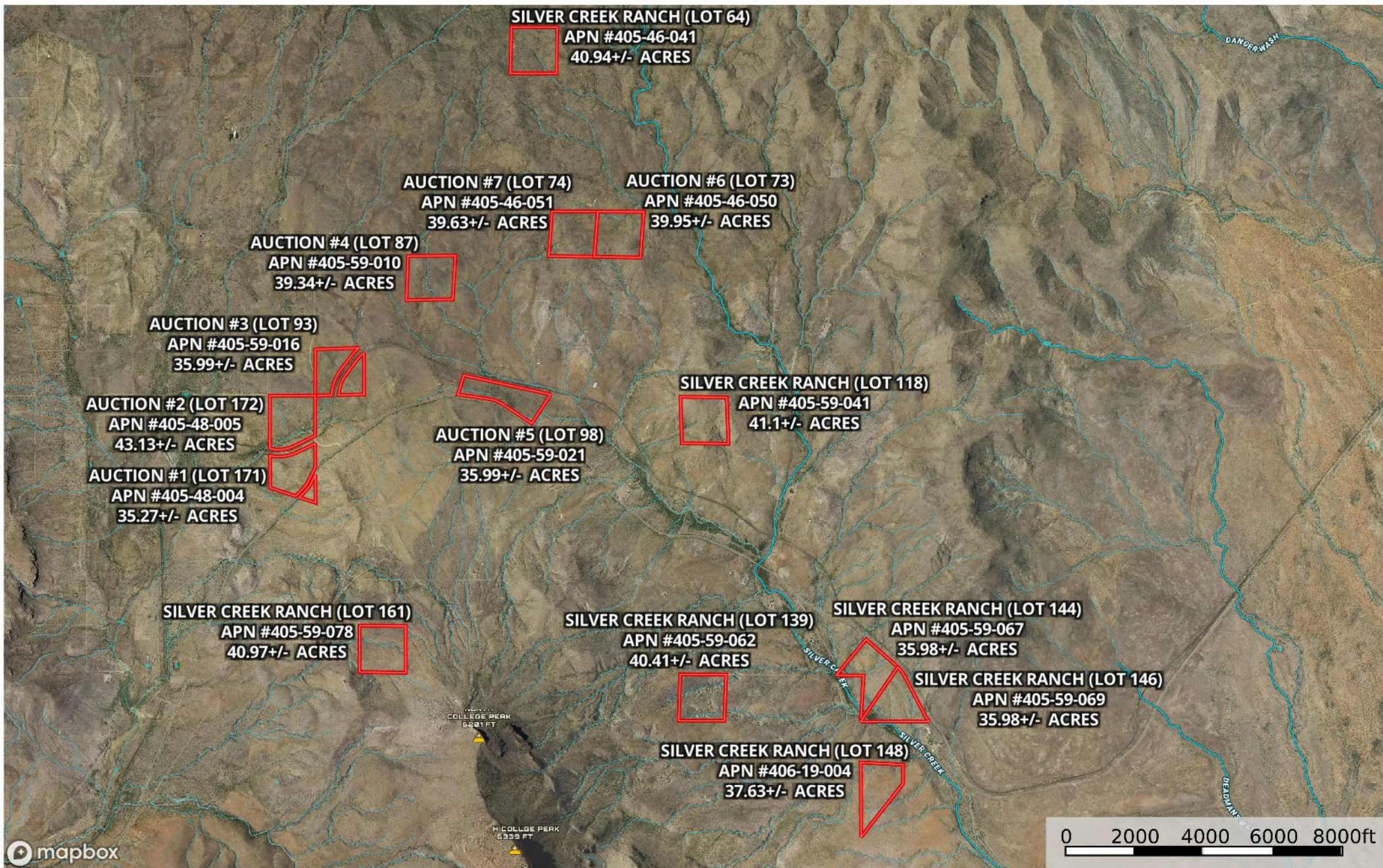
ALL OTHER PARCELS SHOWN ON THE MAPS WILL BE SOLD IN THE NEXT AUCTION
JANUARY 2023.

LEGACY GLOBAL FOUNDATION
Cochise County, Arizona, AC +/-

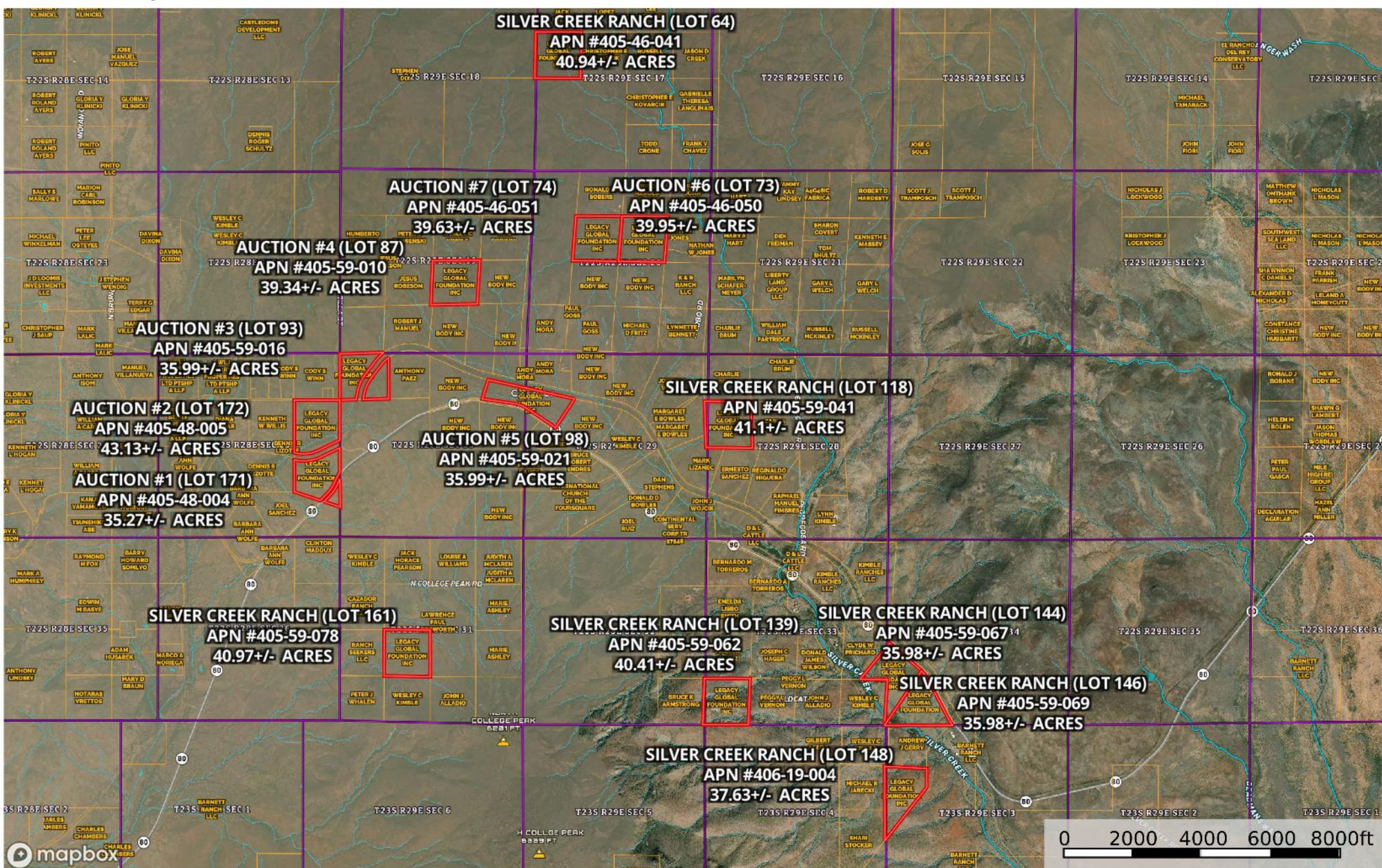




Boundary Stream, Intermittent River/Creek Water Body



Boundary Stream, Intermittent River/Creek Water Body



LEGACY GLOBAL FOUNDATION

Cochise County, Arizona, AC +/-

