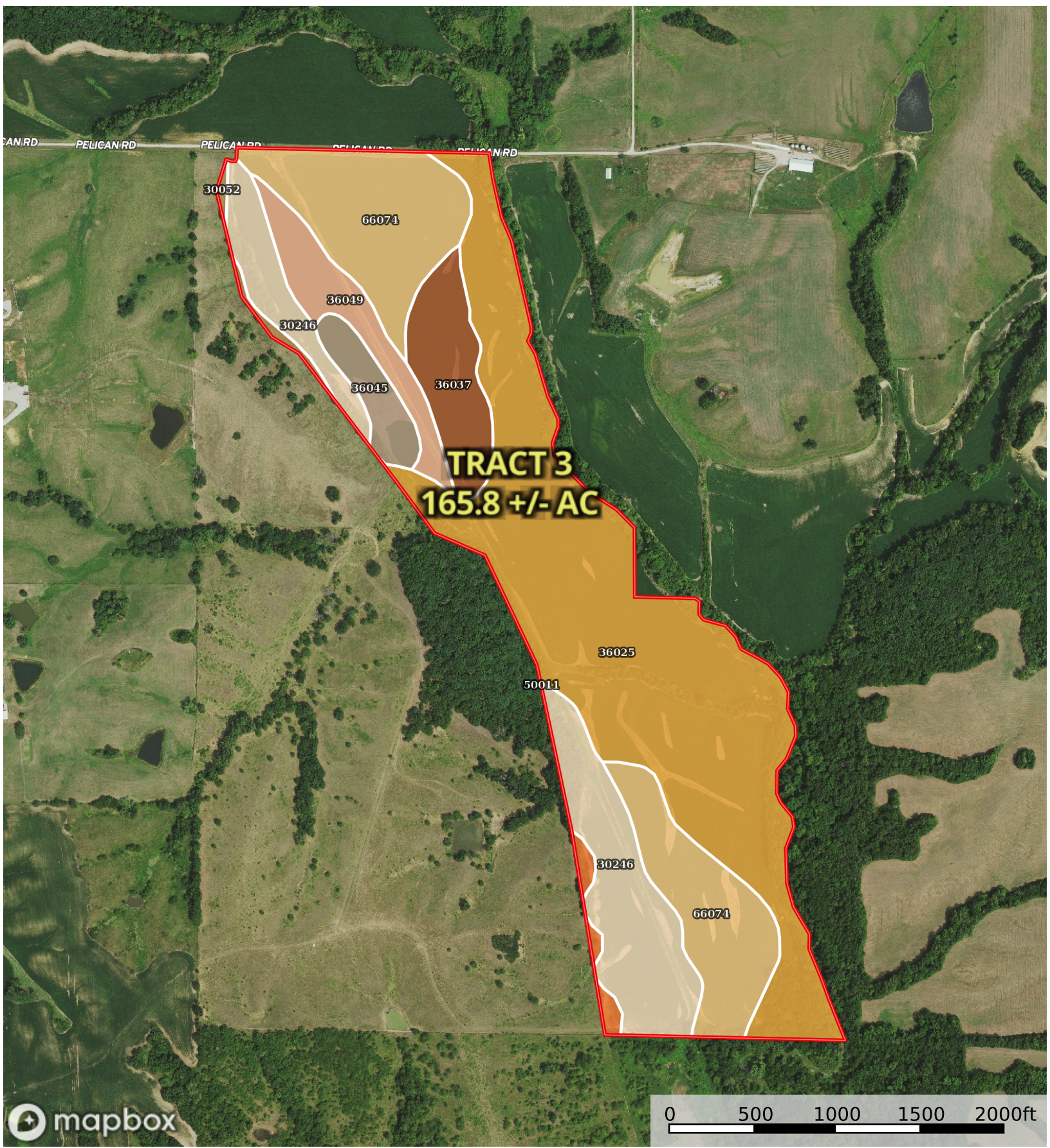


Missouri, AC +/-



Boundary



## Boundary 164.42 ac

SOIL CODE	SOIL DESCRIPTION	ACRES	%	CPI	NCCPI	CAP
36025	Landes loam, 0 to 2 percent slopes, frequently flooded	76.23	46.36	0	63	3w
66074	Chequest silty clay loam, 0 to 2 percent slopes, frequently flooded	34.96	21.26	0	20	3w
30246	Olmitz loam, heavy till, 2 to 5 percent slopes	25.46	15.48	0	92	2e
36037	Tice silt loam, 0 to 2 percent slopes, frequently flooded	10.63	6.47	0	56	3w
36049	Zook silty clay loam, 0 to 2 percent slopes, frequently flooded	9.03	5.49	0	56	3w
36045	Wabash silty clay, 0 to 2 percent slopes, frequently flooded	5.18	3.15	0	15	4w
30055	Gara clay loam, 9 to 14 percent slopes, severely eroded	1.72	1.05	0	65	4e
30052	Gara clay loam, 14 to 18 percent slopes, moderately eroded	1.2	0.73	0	64	6e
50011	Winnegan loam, 20 to 35 percent slopes	0.01	0.01	0	17	6e
TOTALS		164.42(*)	100%	-	56.02	2.91

(\*) Total acres may differ in the second decimal compared to the sum of each acreage soil. This is due to a round error because we only show the acres of each soil with two decimal.

### Capability Legend

Increased Limitations and Hazards

Decreased Adaptability and Freedom of Choice Users

Land, Capability

	1	2	3	4	5	6	7	8
'Wild Life'	•	•	•	•	•	•	•	•
Forestry	•	•	•	•	•	•	•	
Limited	•	•	•	•	•	•	•	
Moderate	•	•	•	•	•	•		
Intense	•	•	•	•	•			
Limited	•	•	•	•				
Moderate	•	•	•					
Intense	•	•						
Very Intense	•							

### Grazing Cultivation

(c) climatic limitations (e) susceptibility to erosion

(s) soil limitations within the rooting zone (w) excess of water