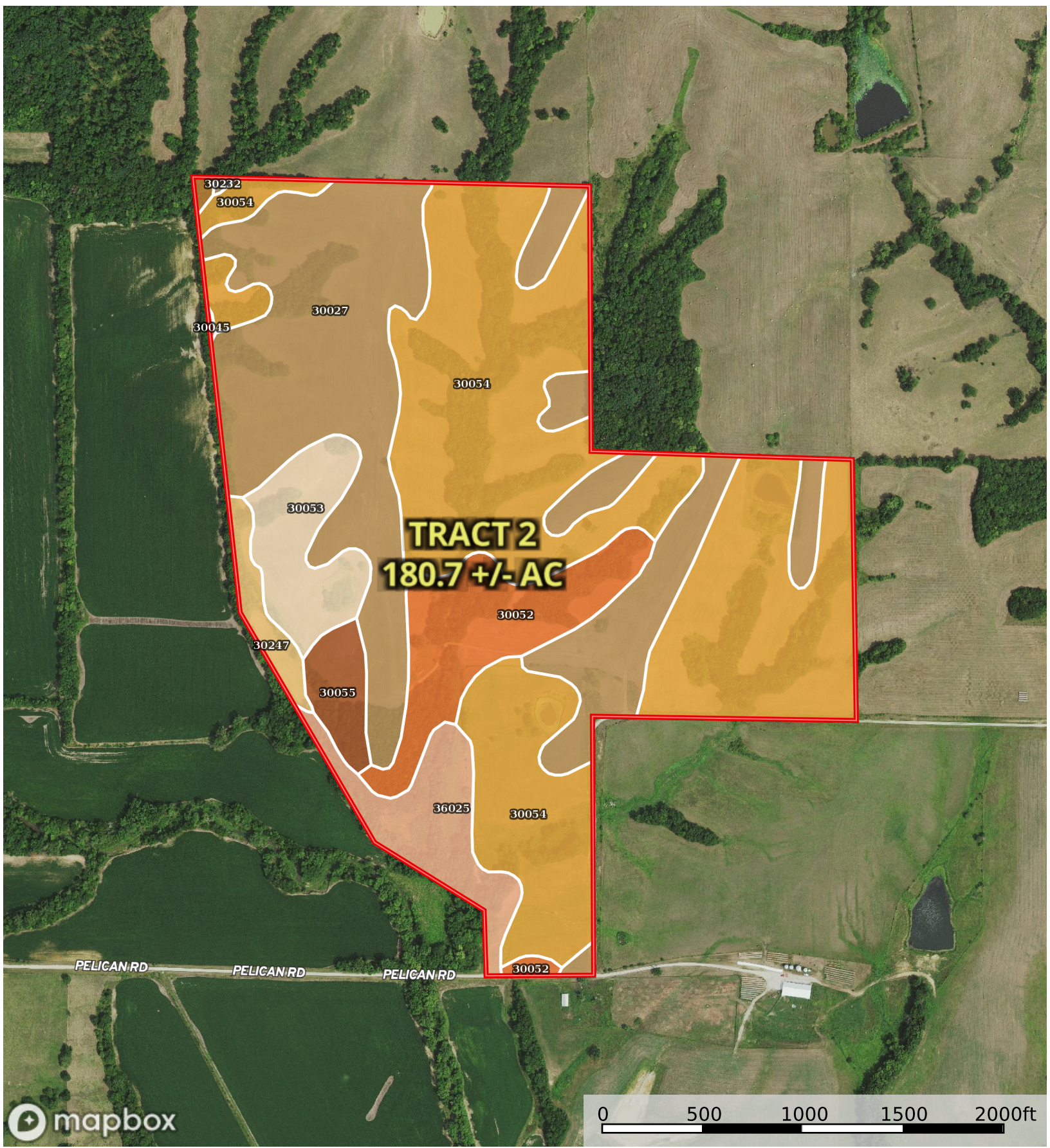


Missouri, AC +/-



Boundary

Boundary 179.22 ac

SOIL CODE	SOIL DESCRIPTION	ACRES	%	CPI	NCCPI	CAP
30054	Gara clay loam, 9 to 14 percent slopes, eroded	83.42	46.55	0	71	4e
30027	Armstrong clay loam, 5 to 9 percent slopes, moderately eroded	55.02	30.7	0	62	3e
30052	Gara clay loam, 14 to 18 percent slopes, moderately eroded	14.65	8.17	0	64	6e
36025	Landes loam, 0 to 2 percent slopes, frequently flooded	9.44	5.27	0	63	3w
30053	Gara clay loam, 14 to 20 percent slopes, severely eroded	9.26	5.17	0	62	6e
30055	Gara clay loam, 9 to 14 percent slopes, severely eroded	3.91	2.18	0	65	4e
30247	Olmitz loam, heavy till, 5 to 9 percent slopes	3.0	1.67	0	85	3e
36063	Zook silty clay loam, 1 to 4 percent slopes, rarely flooded	0.31	0.17	0	87	2w
30232	Winnegan loam, 9 to 14 percent slopes, eroded	0.13	0.07	0	74	4e
30045	Cantril loam, 2 to 5 percent slopes	0.08	0.04	0	91	2e
TOTALS		179.2 1(*)	100%	-	66.92	3.89

(*) Total acres may differ in the second decimal compared to the sum of each acreage soil. This is due to a round error because we only show the acres of each soil with two decimal.

Capability Legend

Increased Limitations and Hazards

Decreased Adaptability and Freedom of Choice Users

Land, Capability

	1	2	3	4	5	6	7	8
'Wild Life'	•	•	•	•	•	•	•	•
Forestry	•	•	•	•	•	•	•	
Limited	•	•	•	•	•	•	•	
Moderate	•	•	•	•	•	•		
Intense	•	•	•	•	•			
Limited	•	•	•	•				
Moderate	•	•	•					
Intense	•	•						
Very Intense	•							

Grazing Cultivation

(c) climatic limitations (e) susceptibility to erosion

(s) soil limitations within the rooting zone (w) excess of water