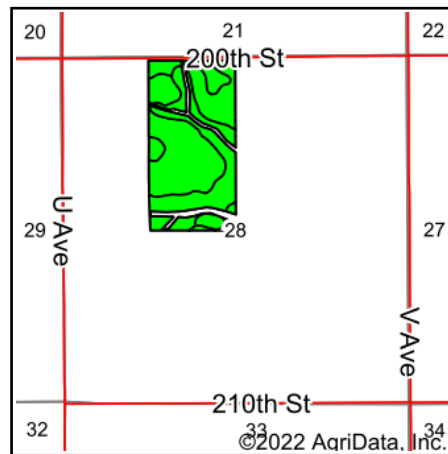


# Soils Map



Soils data provided by USDA and NRCS.



State: **Iowa**  
 County: **Tama**  
 Location: **28-85N-13W**  
 Township: **Clark**  
 Acres: **73.37**  
 Date: **8/8/2022**

**Hawkeye Farm Mgmt & Real Estate**

**United Country Real Estate**  
 22 N Main, Albia IA Phone: 641-932-7796  
 Email: [hawkeye@uciowa.com](mailto:hawkeye@uciowa.com)  
 On the web: [www.uciowa.com](http://www.uciowa.com)  
[www.iowawhitetailfarms.com](http://www.iowawhitetailfarms.com)

Maps Provided By:

**surety**  
 CUSTOMIZED ONLINE MAPPING  
 © AgriData, Inc. 2021 [www.AgriDataInc.com](http://www.AgriDataInc.com)



Area Symbol: IA171, Soil Area Version: 26

Code	Soil Description	Acres	Percent of field	CSR2 Legend	Non-Irr Class *c	CSR2**	CSR	*n NCCPI Soybeans	
377C2	Dinsdale silty clay loam, 5 to 9 percent slopes, eroded	39.68	54.1%		Ille	85	73	63	
11B	Colo-Ely complex, 0 to 5 percent slopes	23.21	31.6%		Ilw	86	68	76	
377B	Dinsdale silty clay loam, 2 to 5 percent slopes	7.53	10.3%		Ile	94	90	74	
350	Waukegan silt loam, 0 to 2 percent slopes	1.85	2.5%		Ils	60	73	64	
133	Colo silty clay loam, 0 to 2 percent slopes, occasionally flooded	0.86	1.2%		Ilw	78	85	75	
428B	Ely silty clay loam, 2 to 5 percent slopes	0.24	0.3%		Ile	88	88	82	
<b>Weighted Average</b>						<b>2.54</b>	<b>85.5</b>	<b>73.4</b>	<b>*n 68.5</b>

\*\*IA has updated the CSR values for each county to CSR2.

\*n: The aggregation method is "Weighted Average using all components"

\*c: Using Capabilities Class Dominant Condition Aggregation Method

Soils data provided by USDA and NRCS.