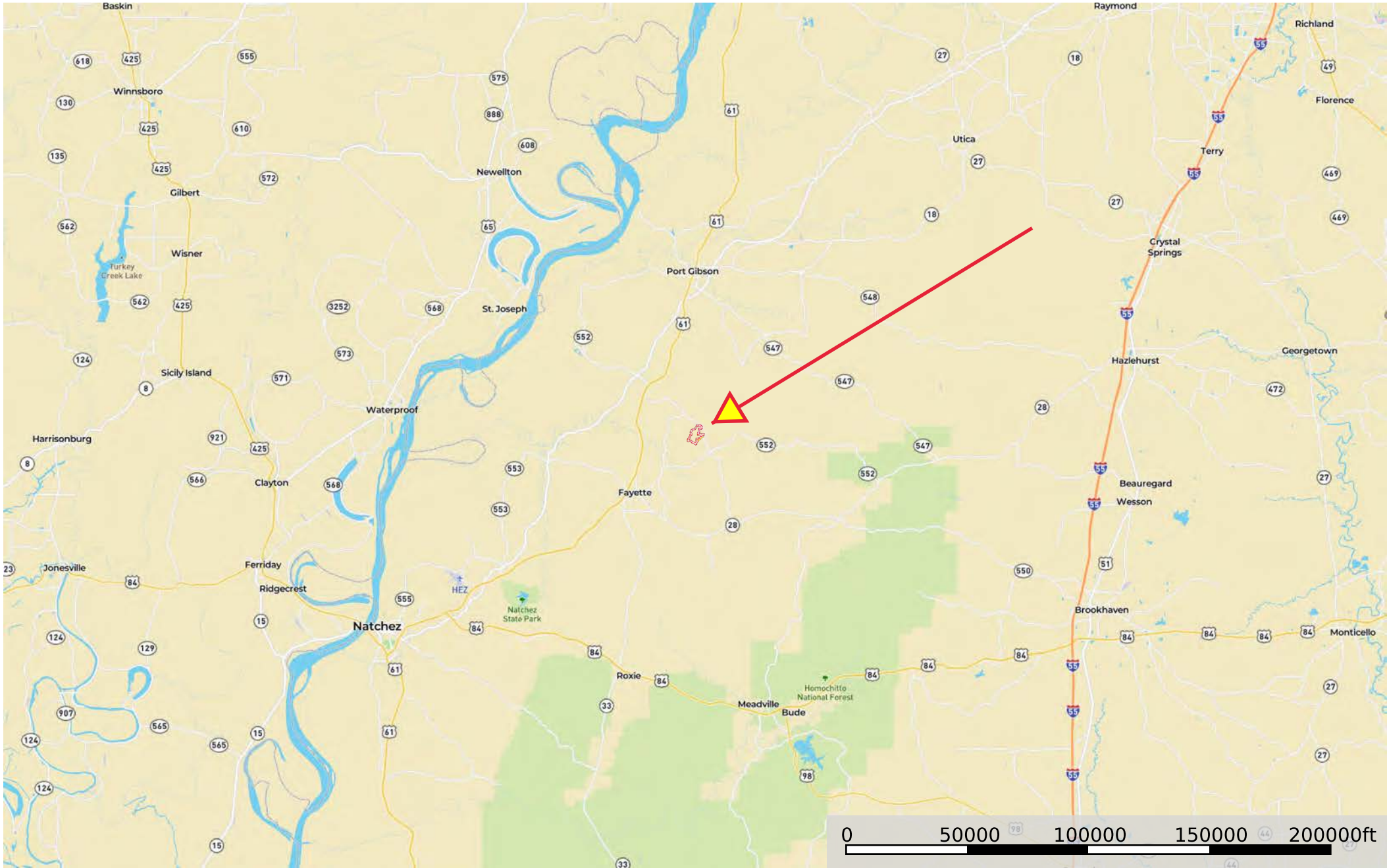
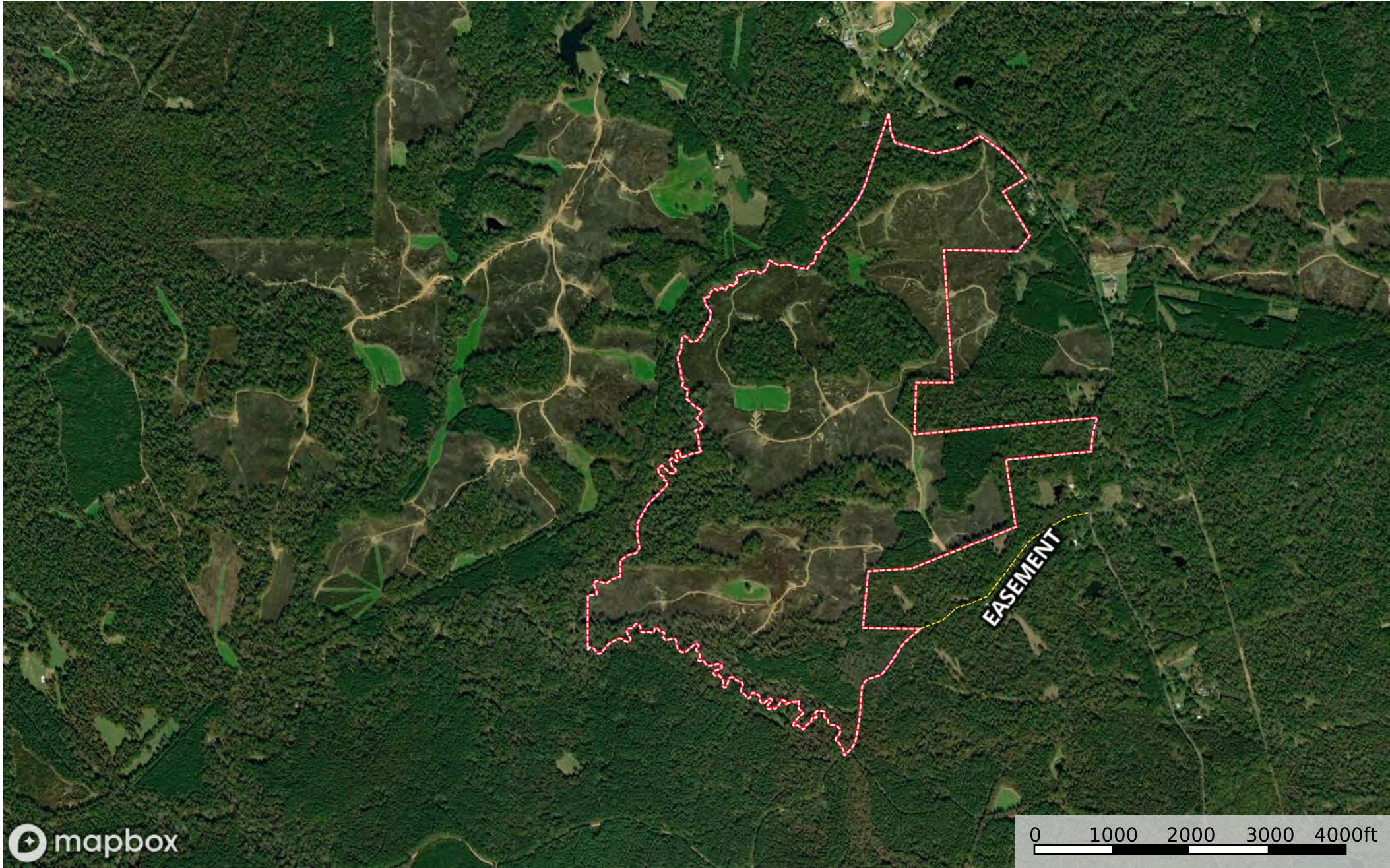


**BB JSAC Ranch**  
Jefferson County, Mississippi, 532 AC +/-



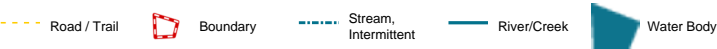
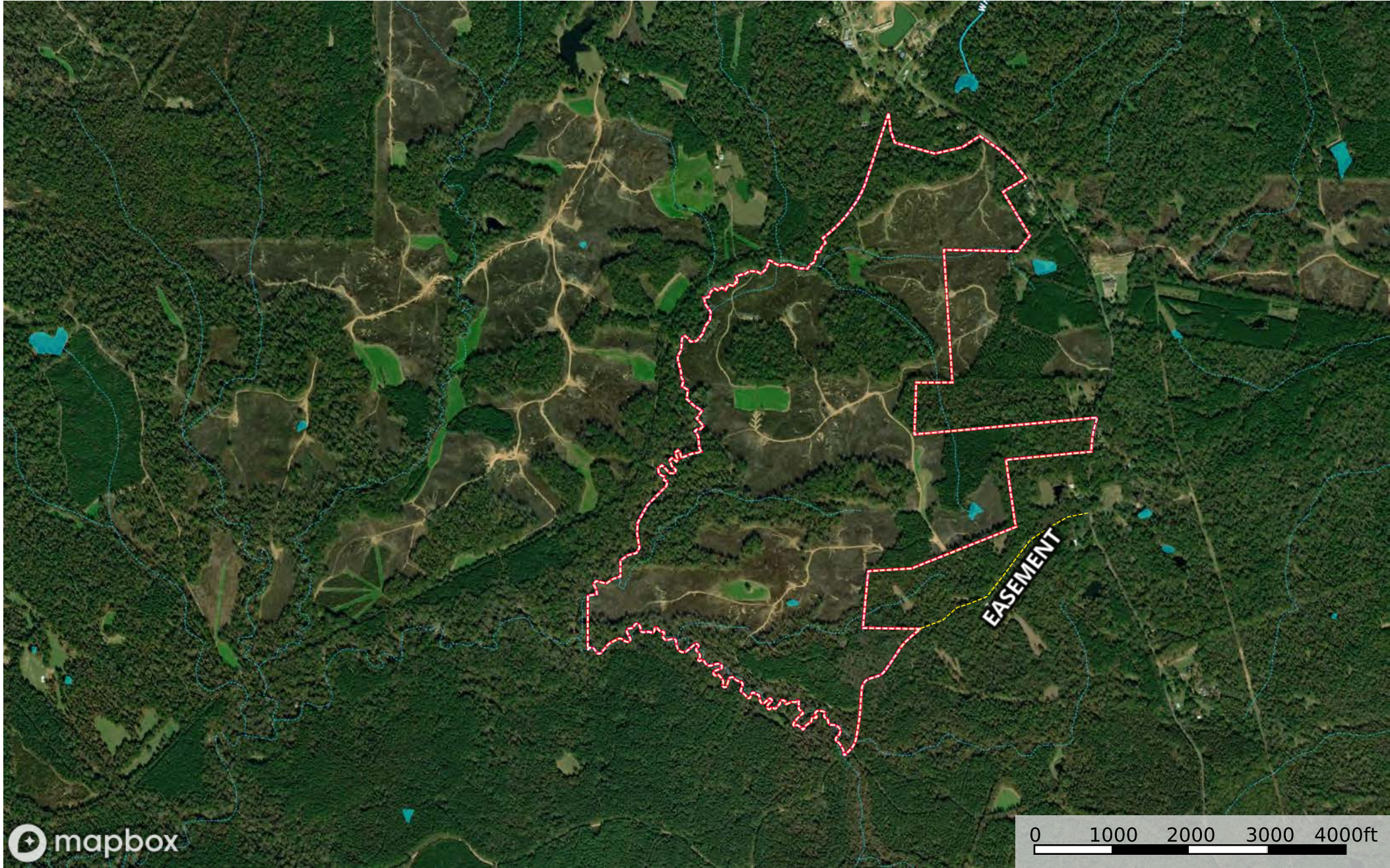
--- Road / Trail     Boundary



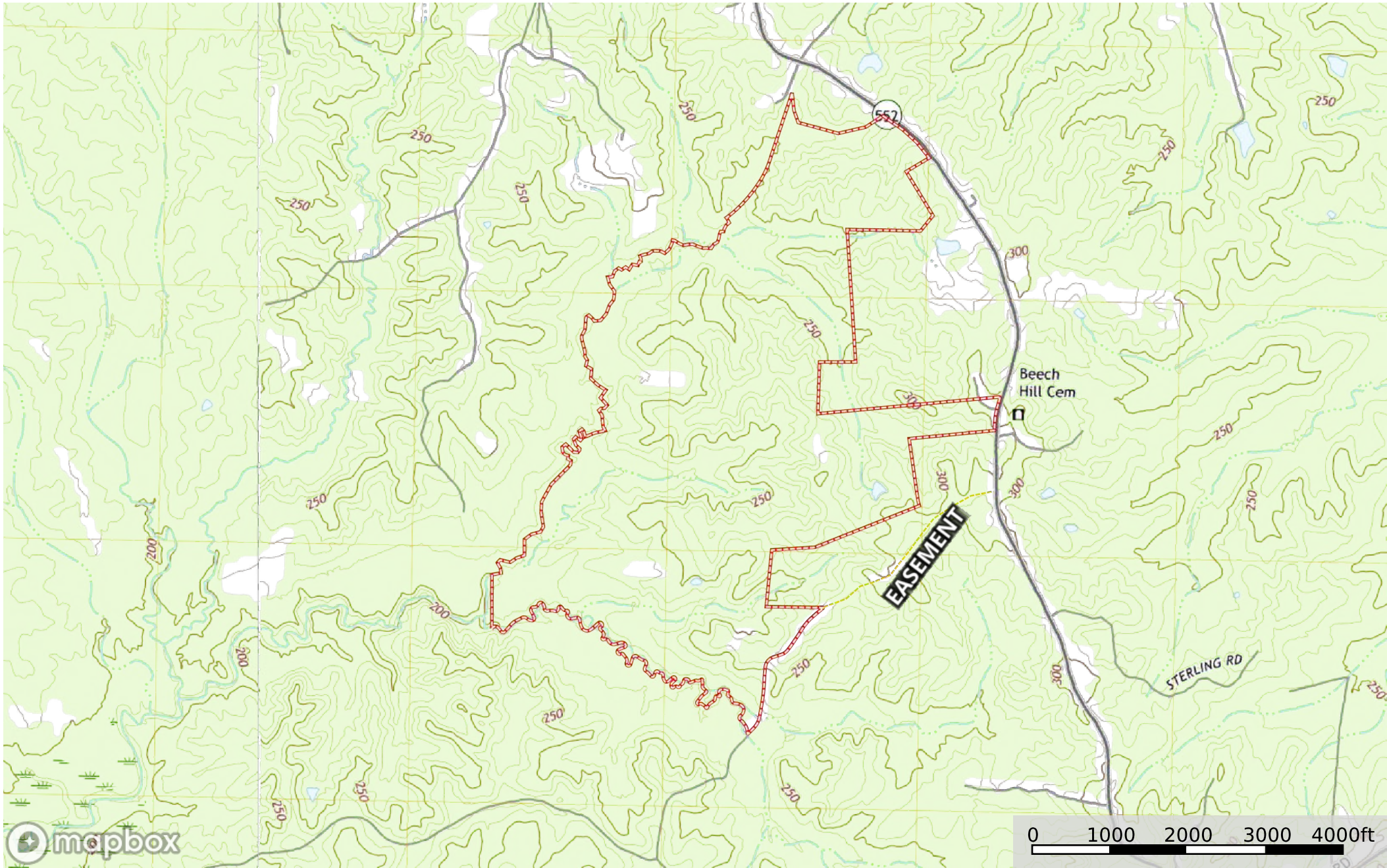


--- Road / Trail    □ Boundary



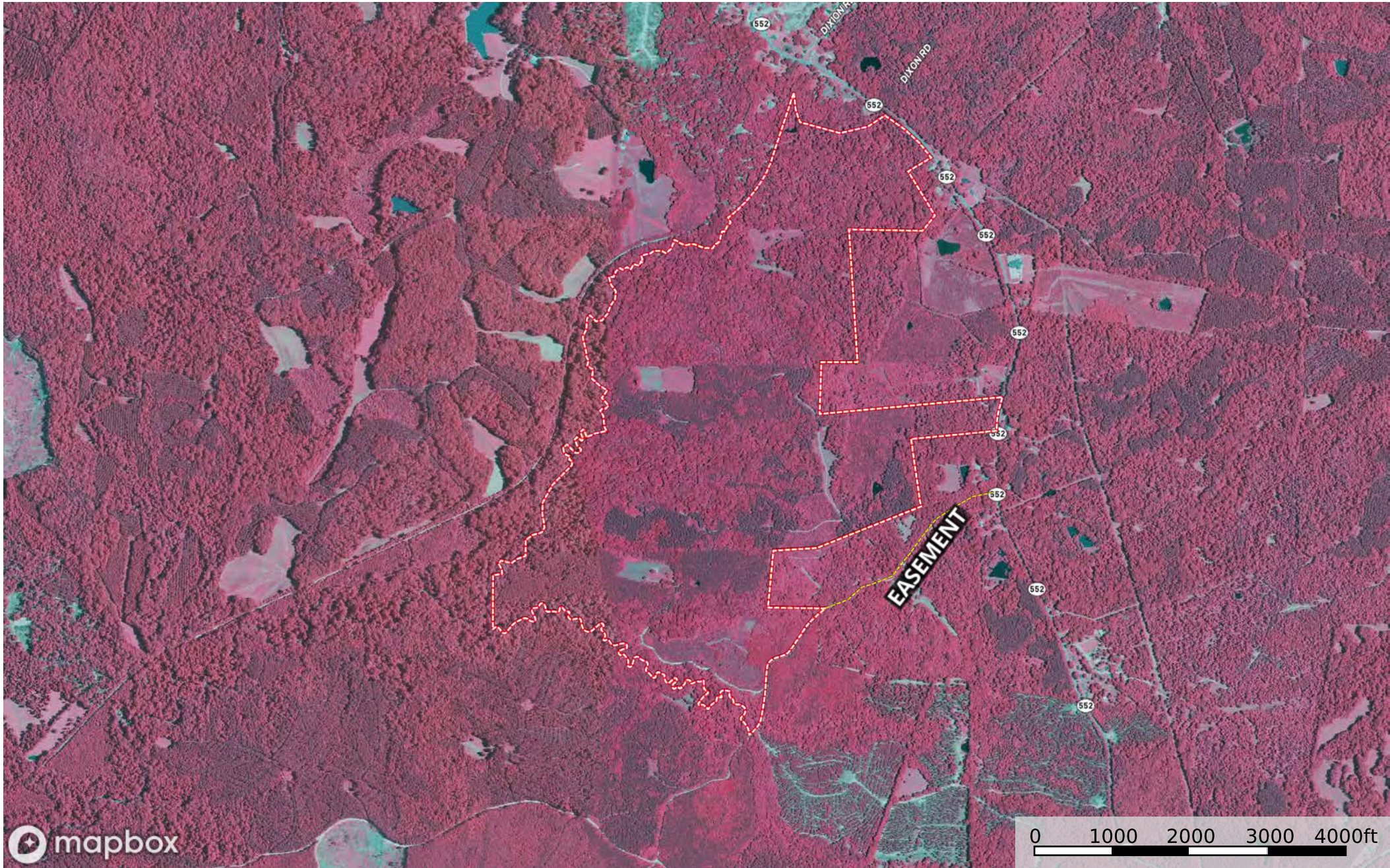






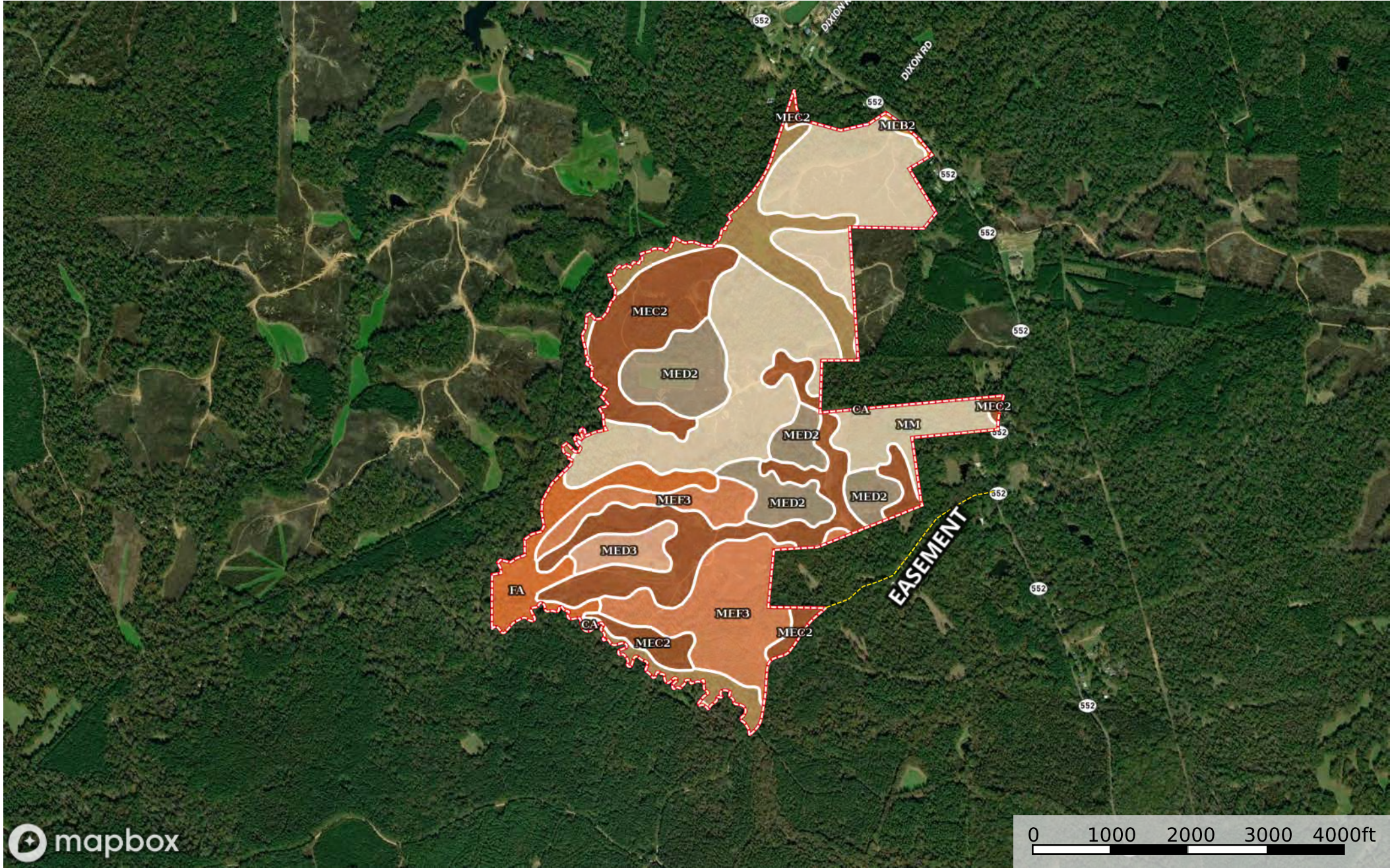
--- Road / Trail    □ Boundary





--- Road / Trail    □ Boundary





--- Road / Trail    □ Boundary



## Boundary 527.97 ac

SOIL CODE	SOIL DESCRIPTION	ACRES	%	CPI	NCCPI	CAP
MM	Memphis-Morganfield association, hilly	171.66	32.51	0	28	7e
MeC2	Memphis silt loam, 5 to 8 percent slopes, eroded	130.48	24.71	0	82	3e
MeF3	Memphis silt loam, 12 to 25 percent slopes, severely eroded	72.36	13.7	0	16	7e
MeD2	Memphis silt loam, 8 to 12 percent slopes, eroded	60.09	11.38	0	79	4e
Ca	Collins silt loam	48.07	9.1	0	56	2w
Fa	Falaya silt	31.24	5.92	0	52	2w
MeD3	Memphis silt loam, 8 to 12 percent slopes, severely eroded	12.71	2.41	0	75	6e
MeB2	Memphis silt loam 2 to 5 percent slopes eroded	1.36	0.26	0	79	2e
TOTALS		527.99(*)	100%	-	50.74	4.88

(\*) Total acres may differ in the second decimal compared to the sum of each acreage soil. This is due to a round error because we only show the acres of each soil with two decimal.

### Capability Legend

Increased Limitations and Hazards

Decreased Adaptability and Freedom of Choice Users

Land, Capability

	1	2	3	4	5	6	7	8
'Wild Life'	•	•	•	•	•	•	•	•
Forestry	•	•	•	•	•	•	•	
Limited	•	•	•	•	•	•	•	
Moderate	•	•	•	•	•	•		
Intense	•	•	•	•	•			
Limited	•	•	•	•				
Moderate	•	•	•					
Intense	•	•						
Very Intense	•							

### Grazing Cultivation

(c) climatic limitations (e) susceptibility to erosion

(s) soil limitations within the rooting zone (w) excess of water