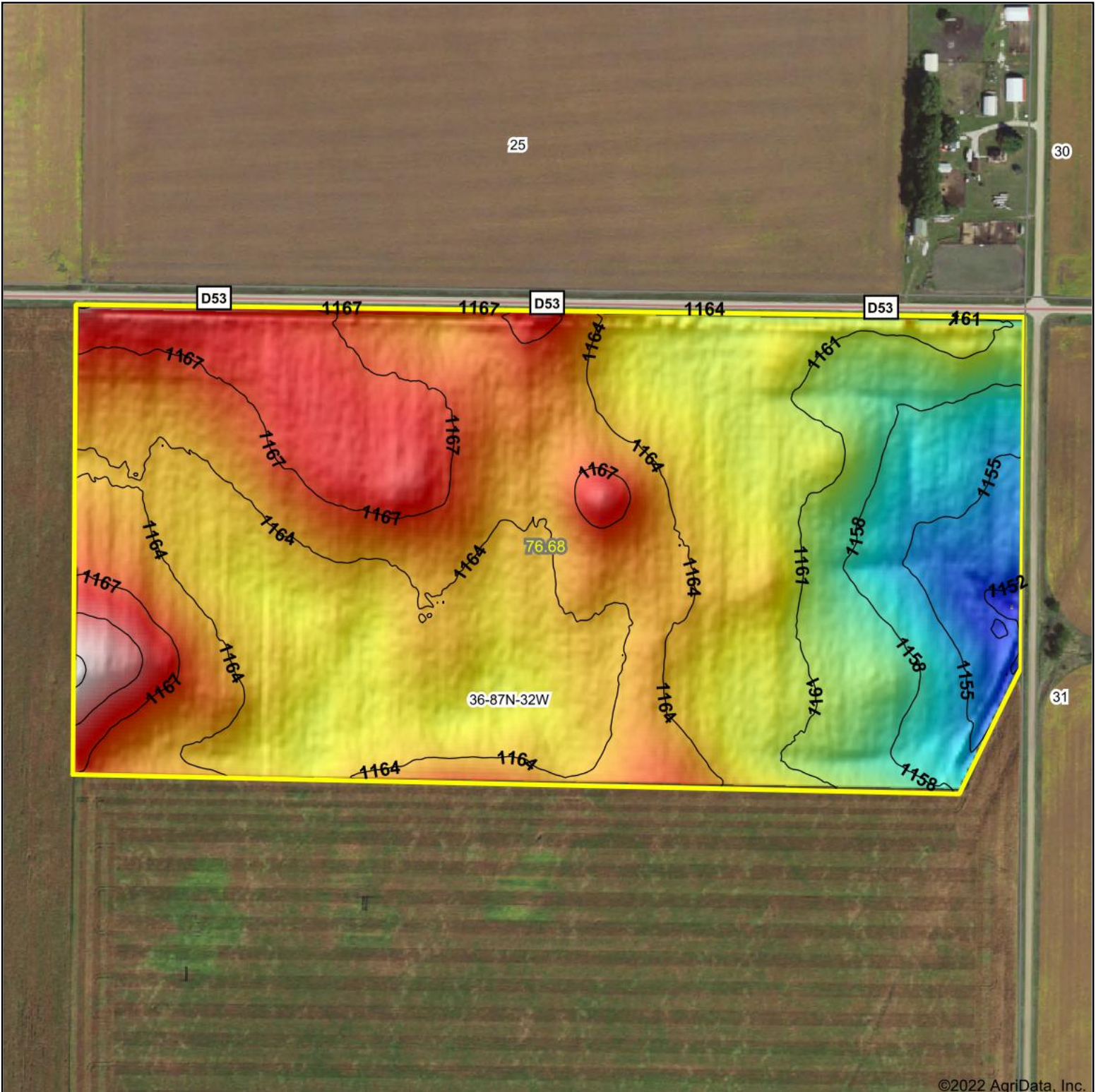


# Topography Hillshade



©2022 AgriData, Inc.



Source: USGS 3 meter dem



Interval(ft): 3

Min: 1,151.2

Max: 1,173.5

Range: 22.3

Average: 1,163.1

Standard Deviation: 3.64 ft



6/15/2022

**36-87N-32W**  
**Calhoun County**  
**Iowa**

map center: 42° 18' 33.27, -94° 31' 6.62

**Hawkeye Farm Mgmt & Real Estate**

**United Country Real Estate**  
22 N Main, Albia IA Phone: 641-932-7796  
Email: hawkeye@iowas.com  
On the web: www.uoiowa.com  
www.iowahillshadefarms.com

Maps Provided By:



© AgriData, Inc. 2021

www.AgriDataInc.com