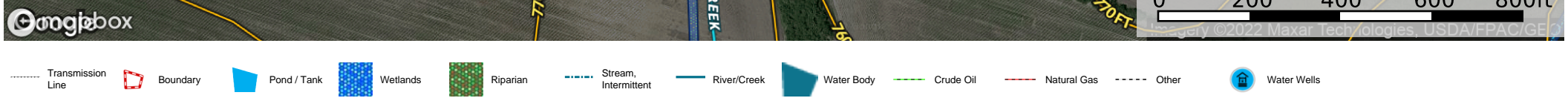
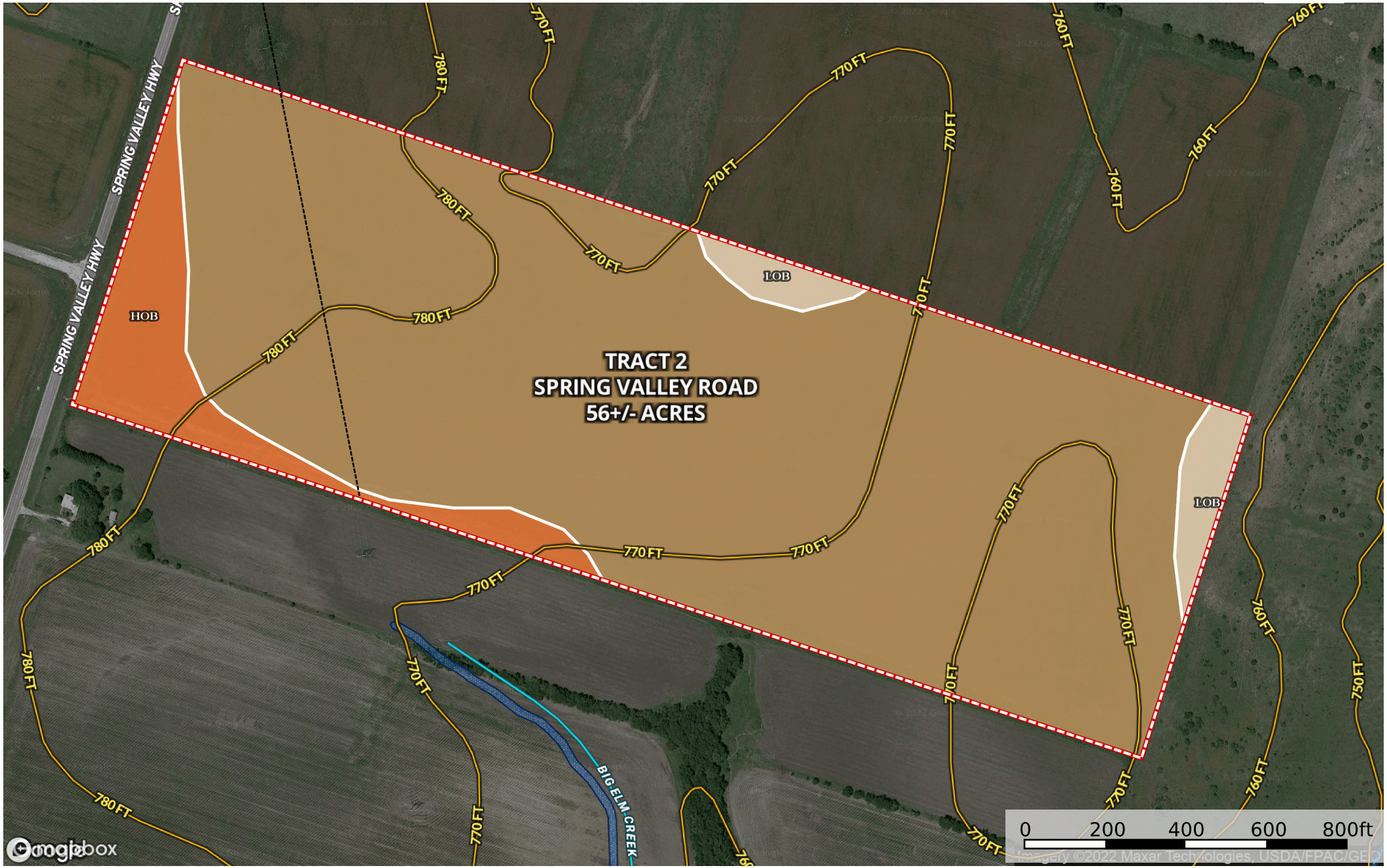


# Niemeier - Tract 2 Available TBD Spring Valley Rd McLennan County, Texas, 56 AC +/-



**M** The information contained herein was obtained from sources deemed to be reliable. MapRight Services makes no warranties or guarantees as to the completeness or accuracy thereof.

|  Boundary 57.31 ac

SOIL CODE	SOIL DESCRIPTION	ACRES	%	CPI	NCCPI	CAP
HeB	Heiden clay, 1 to 3 percent slopes	50.69	88.46	0	42	3e
HoB	Houston Black clay, 1 to 3 percent slopes	4.68	8.17	0	46	2e
LoB	Lott silty clay, 1 to 5 percent slopes	1.94	3.39	0	50	3e
TOTALS		57.3(*)	100%	-	42.6	2.92

(\*) Total acres may differ in the second decimal compared to the sum of each acreage soil. This is due to a round error because we only show the acres of each soil with two decimal.

