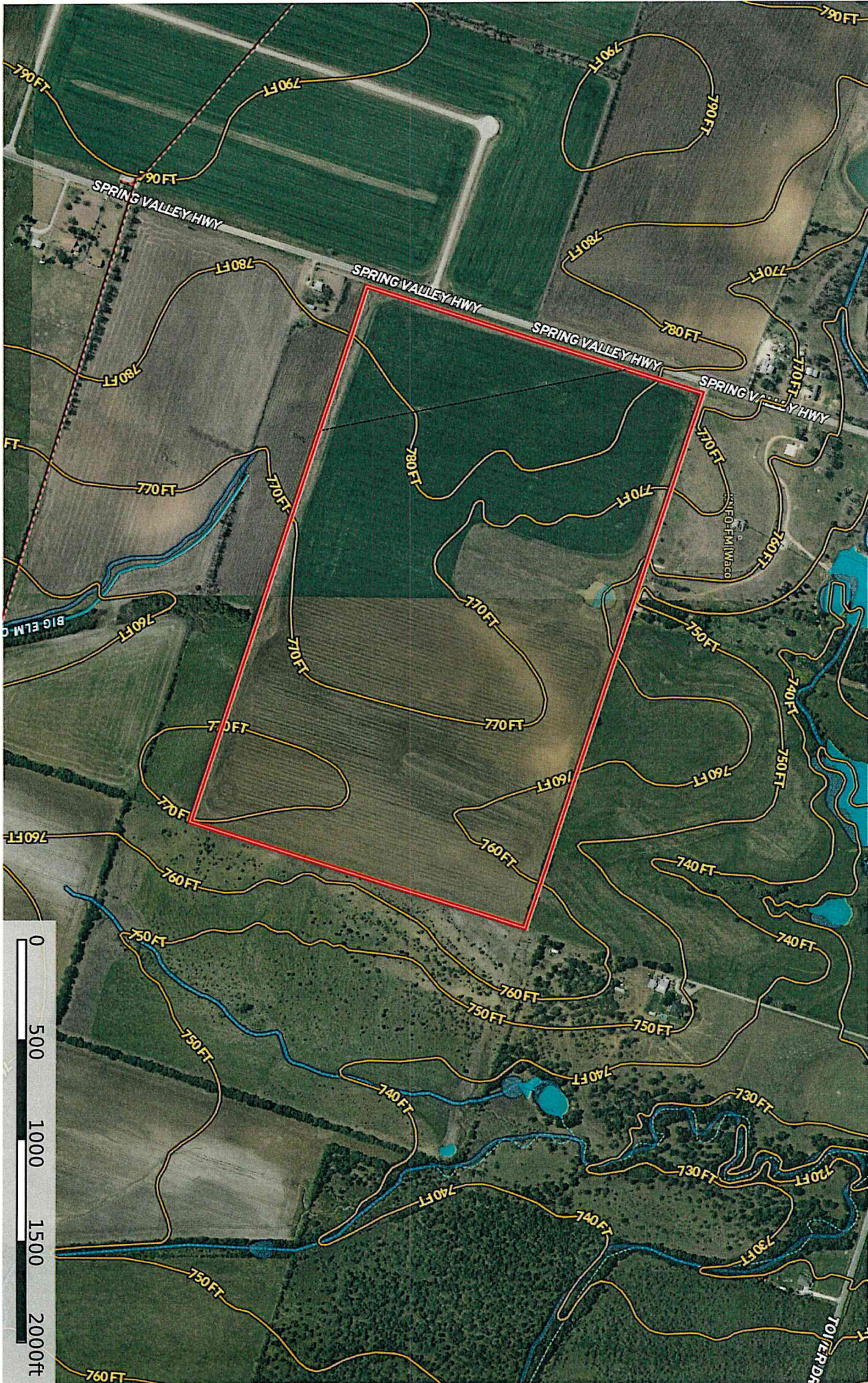


Niemeyer - TBD Spring Valley Rd
 McLennan County, Texas, 112 AC +/-




This information contained herein was obtained from sources deemed to be reliable. MapRight Services makes no warranties or guarantees as to the completeness or accuracy thereof.



Niemeier - TBD Spring Valley Rd
 McLennan County, Texas, 112 AC +/-



The information contained herein was obtained from sources deemed to be reliable. MapInfo Services makes no warranties or guarantees as to the completeness or accuracy thereof.

|  Boundary 111.47 ac

SOIL CODE	SOIL DESCRIPTION	ACRES	%	CPI	NCCPI	CAP
HeB	Heiden clay, 1 to 3 percent slopes	75.75	67.95	0	42	3e
LoB	Lott silty clay, 1 to 5 percent slopes	31.14	27.93	0	50	3e
HoB	Houston Black clay, 1 to 3 percent slopes	4.58	4.11	0	46	2e
TOTALS		111.48(*)	100%	-	44.4	2.96









(*) Total acres may differ in the second decimal compared to the sum of each acreage soil. This is due to a round error because we only show the acres of each soil with two decimal.

Capability Legend

Increased Limitations and Hazards

Decreased Adaptability and Freedom of Choice Users

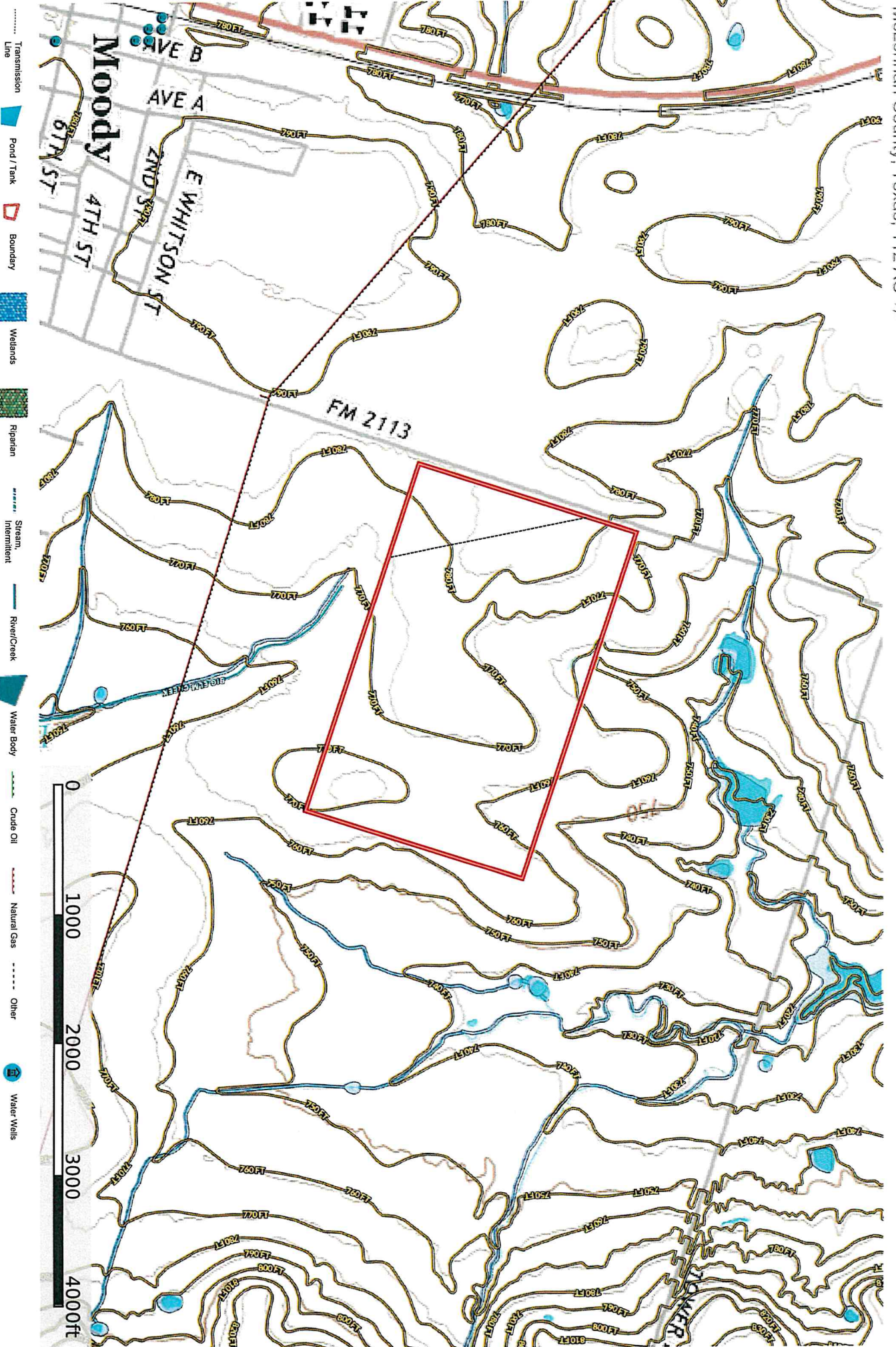
Land, Capability

								
	1	2	3	4	5	6	7	8
'Wild Life'	•	•	•	•	•	•	•	•
Forestry	•	•	•	•	•	•	•	
Limited	•	•	•	•	•	•	•	
Moderate	•	•	•	•	•	•		
Intense	•	•	•	•	•			
Limited	•	•	•	•				
Moderate	•	•	•					
Intense	•	•						
Very Intense	•							

Grazing Cultivation

(c) climatic limitations (e) susceptibility to erosion

(s) soil limitations within the rooting zone (w) excess of water



The information contained herein was obtained from sources deemed to be reliable. MapRight Services makes no warranties or guarantees as to the completeness or accuracy thereof.