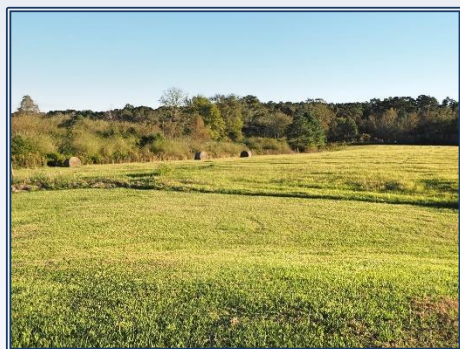




This is a nice poultry farm that has 4 breeder/egg houses that are split into 2 locations about 10 minutes apart. Both farms are located in Tylertown, MS and have a long-term contract with a major poultry company. One farm is on Dinah Church Road with 2- 43' x 400' poultry houses. It includes 21 acres and a 3 Bed, 1 Bath house. The other farm is on Mesa Road with 2- 42' x 400' poultry houses. It includes 31 acres and a nice 2,500 sq ft home that is about 2 years old with a pool. Both farms are mostly open land with ponds and would be perfect for cattle. Both farms are equipped with the latest Rotem computers/controllers, Farm Alarm, cool cells, Acme fans, Big Dutchman feeders and Lubin Drinkers. The nest, nest pads, slates and curtains are in good shape. Both farms are extremely clean and have 2 work rooms that are heated and cooled with a common egg room. The roads and gravel pads are in very good shape. The farms come with 2 Kubota tractors, 1 Zero-Turn finishing mower and grader blades. Don't miss out on this high income, turnkey Poultry Farm. Call today to schedule your showing.

89 Mesa Road, Tylertown

31.213632, -90.182889 GPS



\$1,448,297

52 Acres
MLS #135435
UC #23042-35435



Jeff Daughdrill
jeffdaughdrill@bellsouth.net
Office: (601) 250-0017
Cell: (601) 810-5511
SouthernStatesRealty.com