



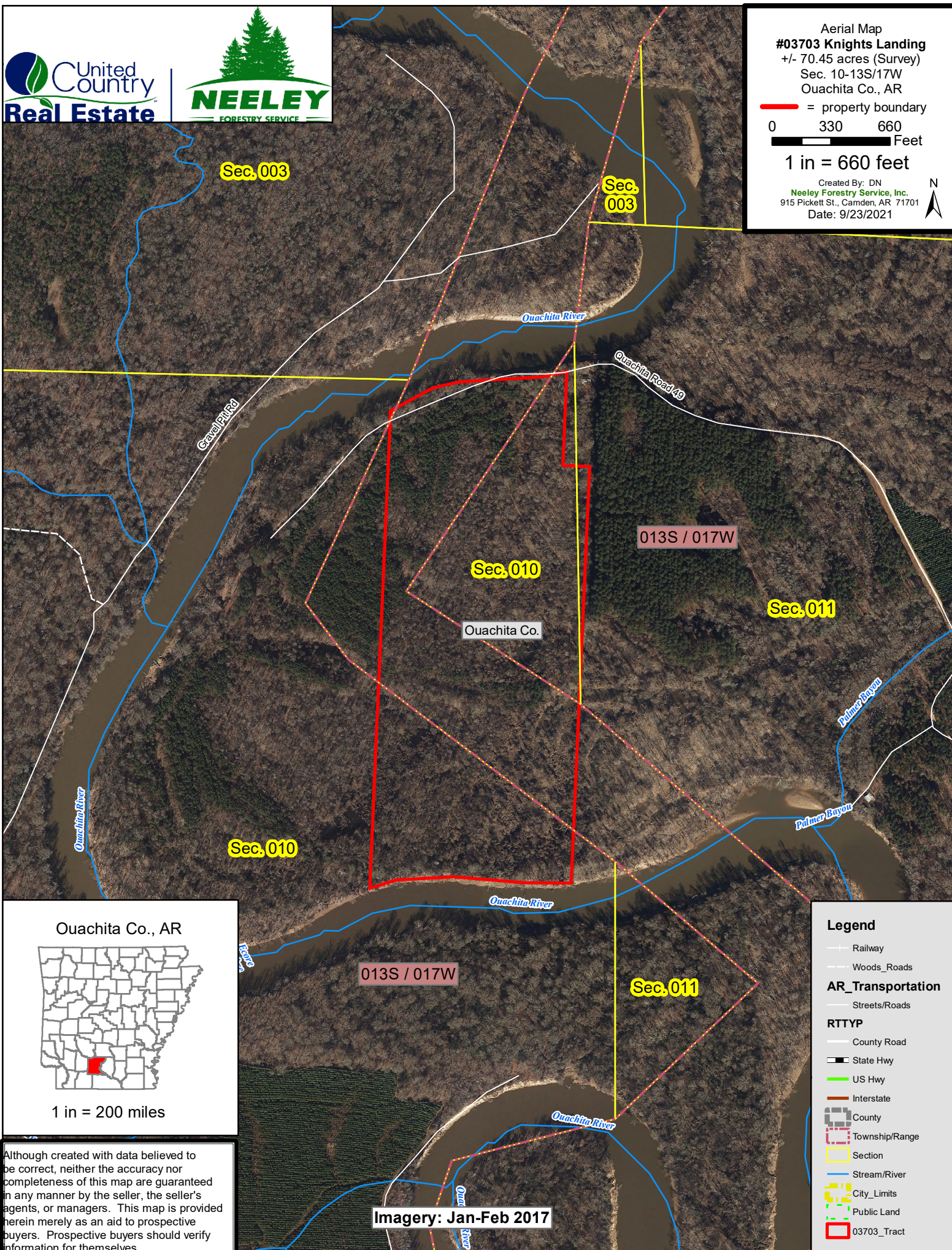
Aerial Map
#03703 Knights Landing
+/- 70.45 acres (Survey)
Sec. 10-13S/17W
Ouachita Co., AR

— = property boundary

0 330 660
Feet

1 in = 660 feet

Created By: DN
Neeley Forestry Service, Inc.
915 Pickett St., Camden, AR 71701
Date: 9/23/2021



Ouachita Co., AR



1 in = 200 miles

Although created with data believed to be correct, neither the accuracy nor completeness of this map are guaranteed in any manner by the seller, the seller's agents, or managers. This map is provided herein merely as an aid to prospective buyers. Prospective buyers should verify information for themselves.

013S / 017W

Sec. 011

Imagery: Jan-Feb 2017

Legend

— Railway

— Woods/Roads

AR_Transportation

— Streets/Roads

RTTYP

— County Road

— State Hwy

— US Hwy

— Interstate

County

Township/Range

Section

Stream/River

City Limits

Public Land

03703_Tract