



Aerial Map
Lighthouse Point, LLC
+/- 20 acres (Taxes)
Sec. 02-11N/13W
Van Buren Co., AR

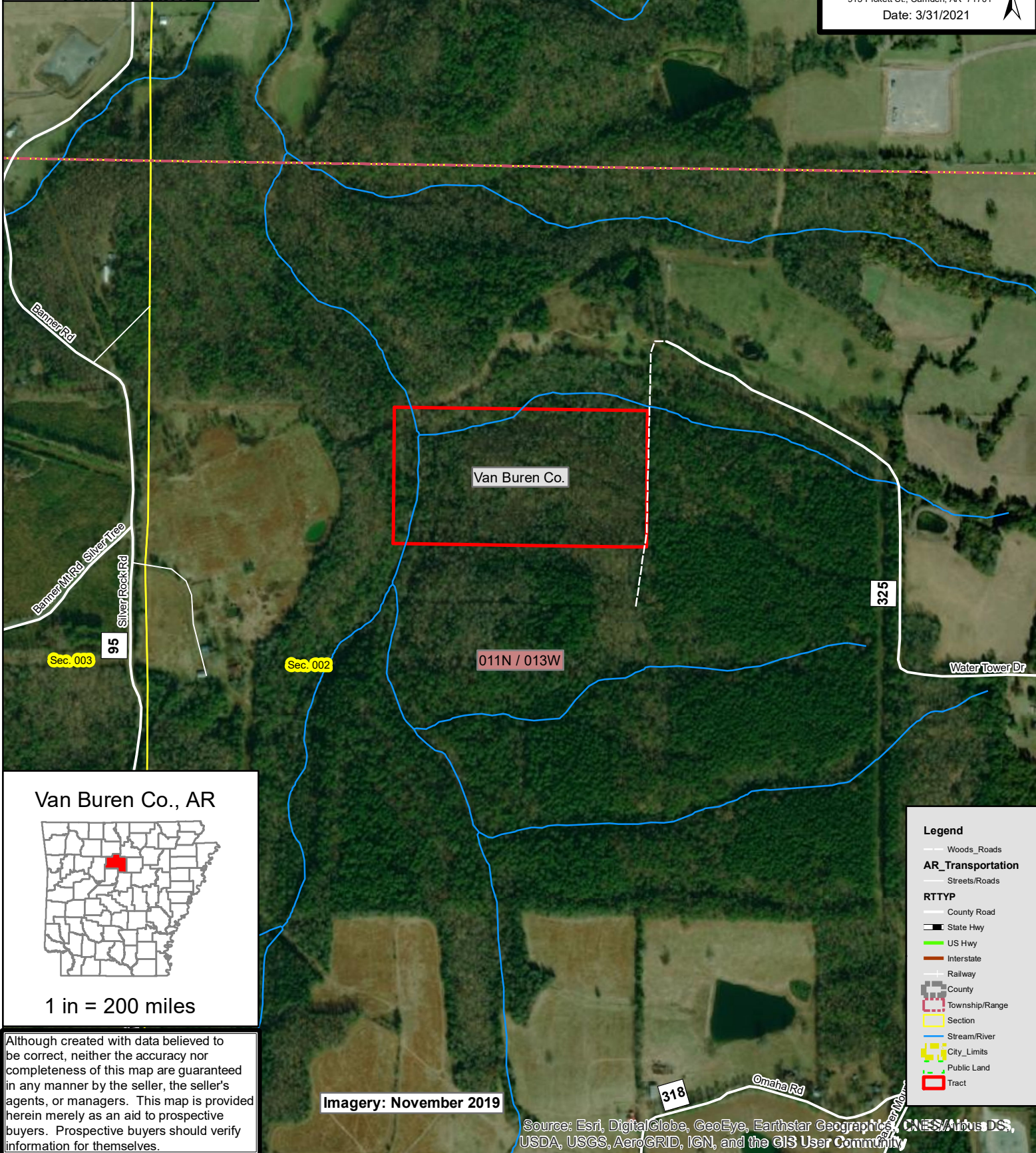
— = property boundary

0 330 660 Feet

1 in = 660 feet

Created By: DN
Neeley Forestry Service, Inc.
915 Pickett St., Camden, AR 71701
Date: 3/31/2021

N



Van Buren Co., AR

1 in = 200 miles

Although created with data believed to be correct, neither the accuracy nor completeness of this map are guaranteed in any manner by the seller, the seller's agents, or managers. This map is provided herein merely as an aid to prospective buyers. Prospective buyers should verify information for themselves.

Legend

- Woods/Roads
- AR_Transportation**
- Streets/Roads
- RTTYP**
- County Road
- State Hwy
- US Hwy
- Interstate
- Railway
- County
- Township/Range
- Section
- Stream/River
- City Limits
- Public Land
- Tract

Imagery: November 2019

Source: Esri, DigitalGlobe, GeoEye, Earthstar Geographics, CNES/Airbus DS, USDA, USGS, AeroGRID, IGN, and the GIS User Community