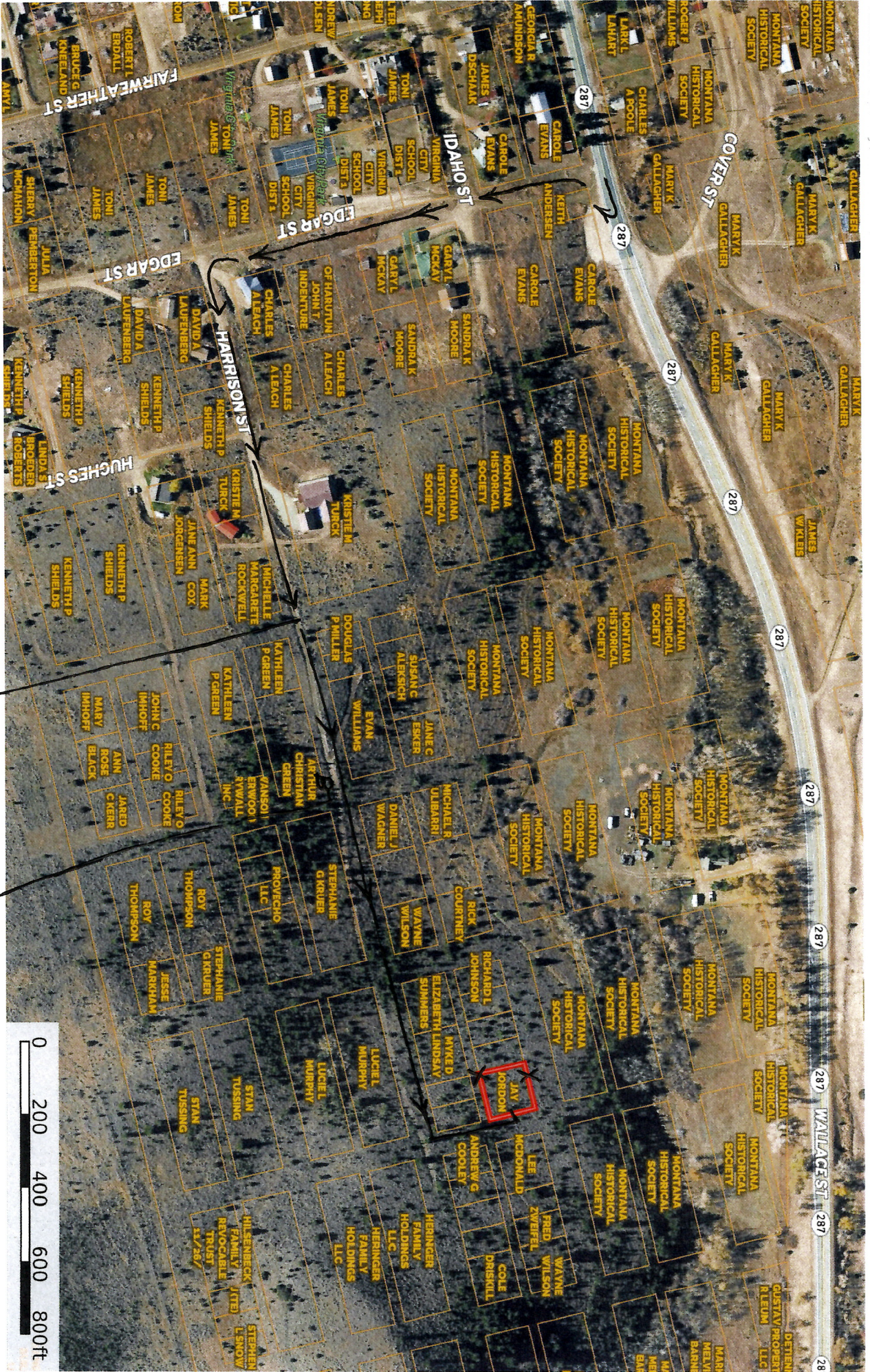


DIRECTIONS MAP



Stop and park

Walk Roughly 1015ft

to end of trail!
 Turn left & walk approx
 140ft til you see signs.

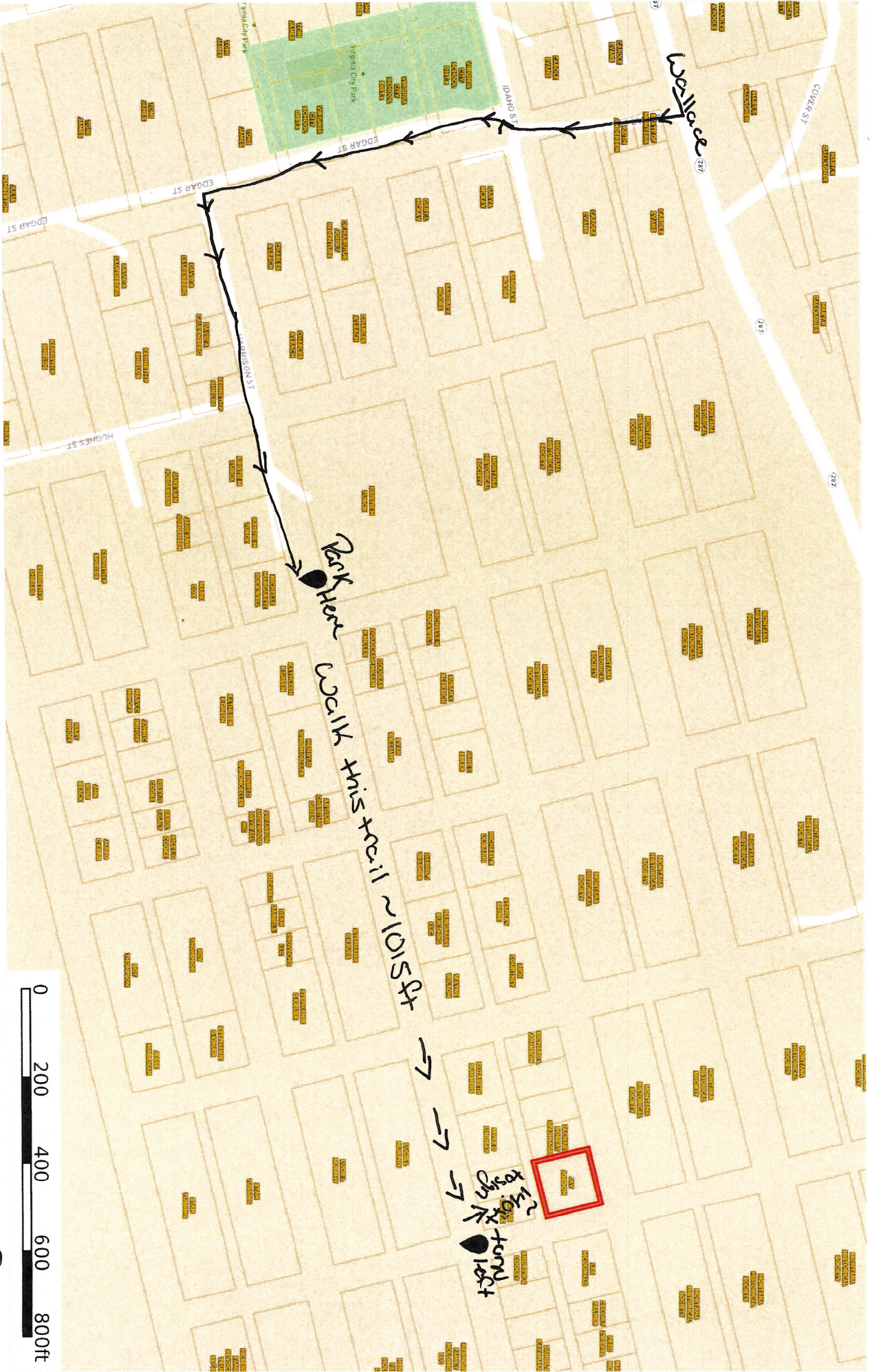
Berkshire
 Hathaway Sign



Boundary



Street View Directions Map



● Boundary

Take Wallace thru town, Turn Right on Edgar, Turn Left on Harrison. Park
After last 2 houses and walk trail approx 1015 ft, turn left at end of trail
and walk down approx 140 ft til you see the sign. Second sign sits on
approx. opposing boundary line.

