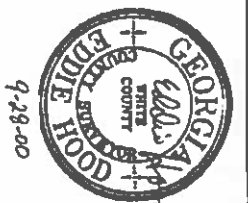


THE FIELD DATA UPON WHICH THIS MAP OR PLAN IS BASED HAS A CLOSURE PRECISION OF ONE FOOT IN \_\_\_\_\_ FEET AND AN ANGULAR ERROR OF \_\_\_\_\_ PER ANGLE POINT, AND WAS ADJUSTED USING \_\_\_\_\_ RULE.

THIS MAP OR PLAN HAS BEEN CALCULATED FOR CLOSURE AND IS FOUND TO BE ACCURATE WITHIN ONE FOOT IN \_\_\_\_\_ FEET. EQUIPMENT USED - TOPCON GTS-28 TOTAL STATION

2008 OCT 16 PM 1:08  
 LOUIE D. PAGE, III  
 DEBRA M. ADAMS, CLERK  
 WHITE COUNTY, GA



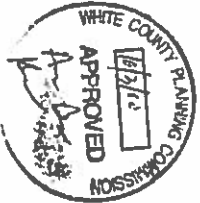
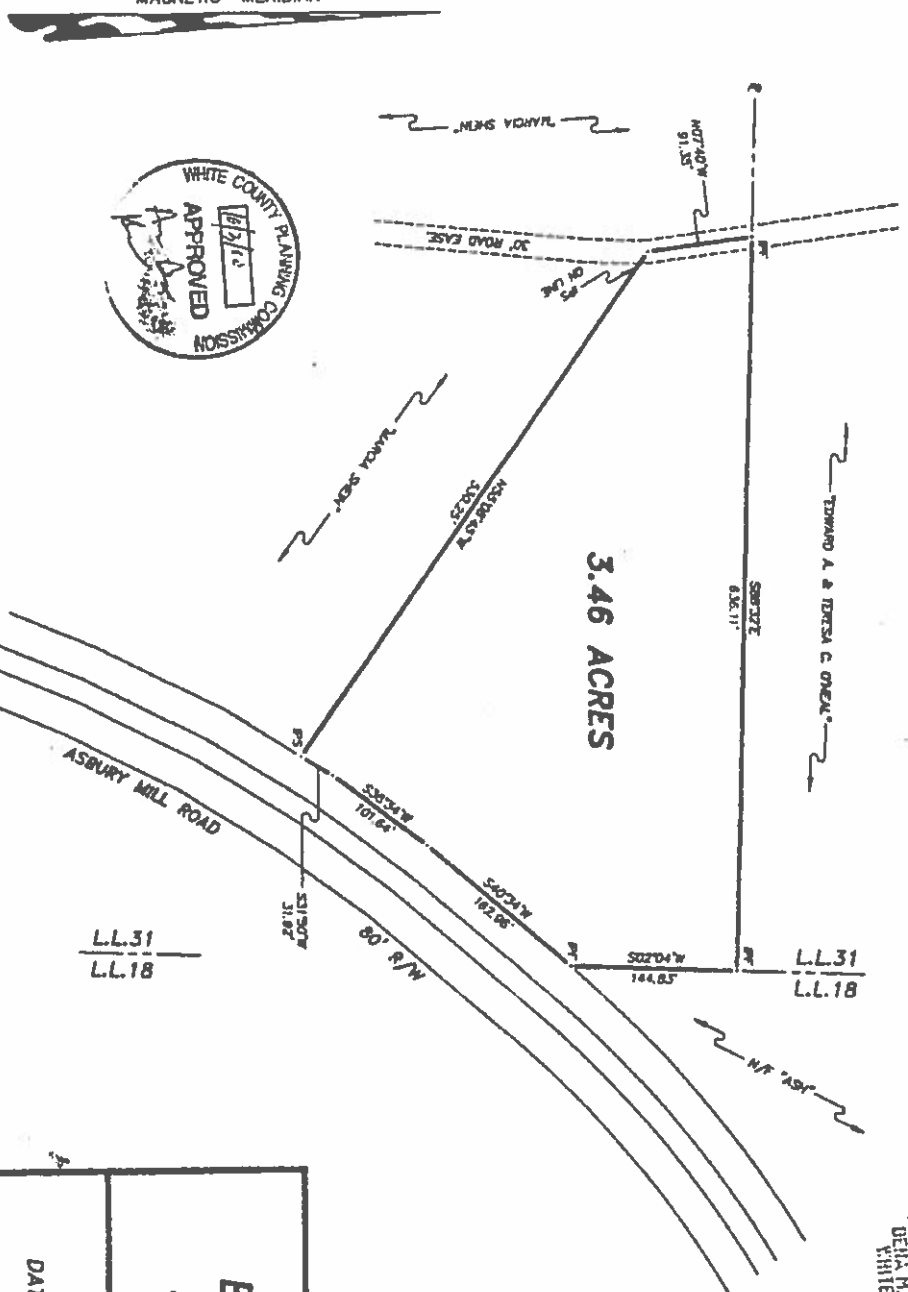
9-29-00

EDIE HOOD & ASSOCIATES  
 8 COUNTRYHOUSE SQUARE  
 CLEVELAND, GA, 30328  
 PHONE: (706) 865-5878  
 FAX: (706) 865-7500

JOB NO. 00-275

THIS PROPERTY IS NOT IN A DESIGNATED FLOOD HAZARD AREA.

MAGNETIC MERIDIAN



MAP PREPARED FOR  
**EDWARD A. O'NEAL**  
 AND  
**TERESA C. O'NEAL**

LAND LOT 31 — 1st DISTRICT  
 WHITE COUNTY, GEORGIA  
 DATE: 09-28-2000 SCALE: 1" = 100'



pg 49 / pg 112

