

LINE	LENGTH	BEARING
1	12.87	S 12° 30' 00" E
2	12.87	S 12° 30' 00" E
3	12.87	S 12° 30' 00" E
4	12.87	S 12° 30' 00" E
5	12.87	S 12° 30' 00" E
6	12.87	S 12° 30' 00" E
7	12.87	S 12° 30' 00" E
8	12.87	S 12° 30' 00" E
9	12.87	S 12° 30' 00" E
10	12.87	S 12° 30' 00" E
11	12.87	S 12° 30' 00" E
12	12.87	S 12° 30' 00" E
13	12.87	S 12° 30' 00" E
14	12.87	S 12° 30' 00" E
15	12.87	S 12° 30' 00" E
16	12.87	S 12° 30' 00" E
17	12.87	S 12° 30' 00" E
18	12.87	S 12° 30' 00" E
19	12.87	S 12° 30' 00" E
20	12.87	S 12° 30' 00" E
21	12.87	S 12° 30' 00" E
22	12.87	S 12° 30' 00" E
23	12.87	S 12° 30' 00" E
24	12.87	S 12° 30' 00" E
25	12.87	S 12° 30' 00" E
26	12.87	S 12° 30' 00" E
27	12.87	S 12° 30' 00" E
28	12.87	S 12° 30' 00" E
29	12.87	S 12° 30' 00" E
30	12.87	S 12° 30' 00" E
31	12.87	S 12° 30' 00" E
32	12.87	S 12° 30' 00" E
33	12.87	S 12° 30' 00" E
34	12.87	S 12° 30' 00" E
35	12.87	S 12° 30' 00" E
36	12.87	S 12° 30' 00" E
37	12.87	S 12° 30' 00" E
38	12.87	S 12° 30' 00" E
39	12.87	S 12° 30' 00" E
40	12.87	S 12° 30' 00" E
41	12.87	S 12° 30' 00" E
42	12.87	S 12° 30' 00" E
43	12.87	S 12° 30' 00" E
44	12.87	S 12° 30' 00" E
45	12.87	S 12° 30' 00" E
46	12.87	S 12° 30' 00" E
47	12.87	S 12° 30' 00" E
48	12.87	S 12° 30' 00" E
49	12.87	S 12° 30' 00" E
50	12.87	S 12° 30' 00" E
51	12.87	S 12° 30' 00" E
52	12.87	S 12° 30' 00" E
53	12.87	S 12° 30' 00" E
54	12.87	S 12° 30' 00" E
55	12.87	S 12° 30' 00" E
56	12.87	S 12° 30' 00" E
57	12.87	S 12° 30' 00" E
58	12.87	S 12° 30' 00" E
59	12.87	S 12° 30' 00" E
60	12.87	S 12° 30' 00" E
61	12.87	S 12° 30' 00" E
62	12.87	S 12° 30' 00" E
63	12.87	S 12° 30' 00" E
64	12.87	S 12° 30' 00" E
65	12.87	S 12° 30' 00" E
66	12.87	S 12° 30' 00" E
67	12.87	S 12° 30' 00" E
68	12.87	S 12° 30' 00" E
69	12.87	S 12° 30' 00" E
70	12.87	S 12° 30' 00" E
71	12.87	S 12° 30' 00" E
72	12.87	S 12° 30' 00" E
73	12.87	S 12° 30' 00" E
74	12.87	S 12° 30' 00" E
75	12.87	S 12° 30' 00" E
76	12.87	S 12° 30' 00" E
77	12.87	S 12° 30' 00" E
78	12.87	S 12° 30' 00" E
79	12.87	S 12° 30' 00" E
80	12.87	S 12° 30' 00" E
81	12.87	S 12° 30' 00" E
82	12.87	S 12° 30' 00" E
83	12.87	S 12° 30' 00" E
84	12.87	S 12° 30' 00" E
85	12.87	S 12° 30' 00" E
86	12.87	S 12° 30' 00" E
87	12.87	S 12° 30' 00" E
88	12.87	S 12° 30' 00" E
89	12.87	S 12° 30' 00" E
90	12.87	S 12° 30' 00" E
91	12.87	S 12° 30' 00" E
92	12.87	S 12° 30' 00" E
93	12.87	S 12° 30' 00" E
94	12.87	S 12° 30' 00" E
95	12.87	S 12° 30' 00" E
96	12.87	S 12° 30' 00" E
97	12.87	S 12° 30' 00" E
98	12.87	S 12° 30' 00" E
99	12.87	S 12° 30' 00" E
100	12.87	S 12° 30' 00" E

PARTITION SURVEY
 FOR
ISSA CERRA
 FIRST CIVIL DISTRICT
 FERRY CO., TN

PREPARED BY
SUPERIOR LAND SURVEYING, INC.
 1000 SUPERIOR DRIVE
 FERRY, TENNESSEE 37738

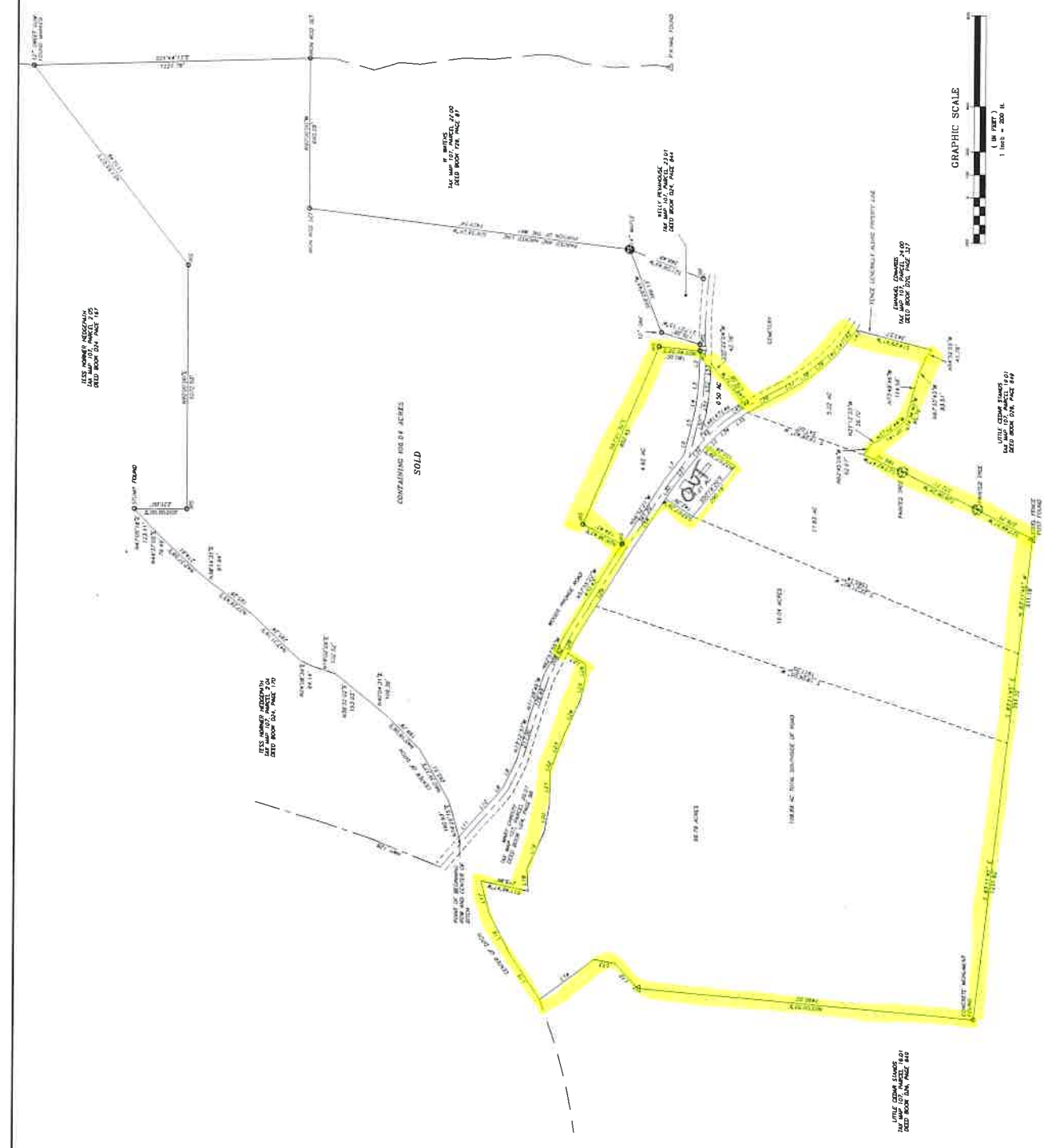
DATE OF SURVEY: [] 20[]

ALL RIGHTS RESERVED. NO PART OF THIS SURVEY MAY BE REPRODUCED OR TRANSMITTED IN ANY FORM OR BY ANY MEANS, ELECTRONIC OR MECHANICAL, WITHOUT PERMISSION IN WRITING FROM SUPERIOR LAND SURVEYING, INC.

THIS SURVEY WAS PREPARED UNDER CONTRACT AND THE SURVEYOR'S RESPONSIBILITY IS LIMITED TO THE ACCURACY OF THE SURVEY DATA PROVIDED BY THE CLIENT. THE SURVEYOR DOES NOT GUARANTEE THE ACCURACY OF THE DATA PROVIDED BY THE CLIENT. THE SURVEYOR'S LIABILITY IS LIMITED TO THE AMOUNT OF THE FEE CHARGED FOR THIS SURVEY.

SURVEYOR: []

DATE OF SURVEY: []



GRAPHIC SCALE
 1 inch = 200 ft.