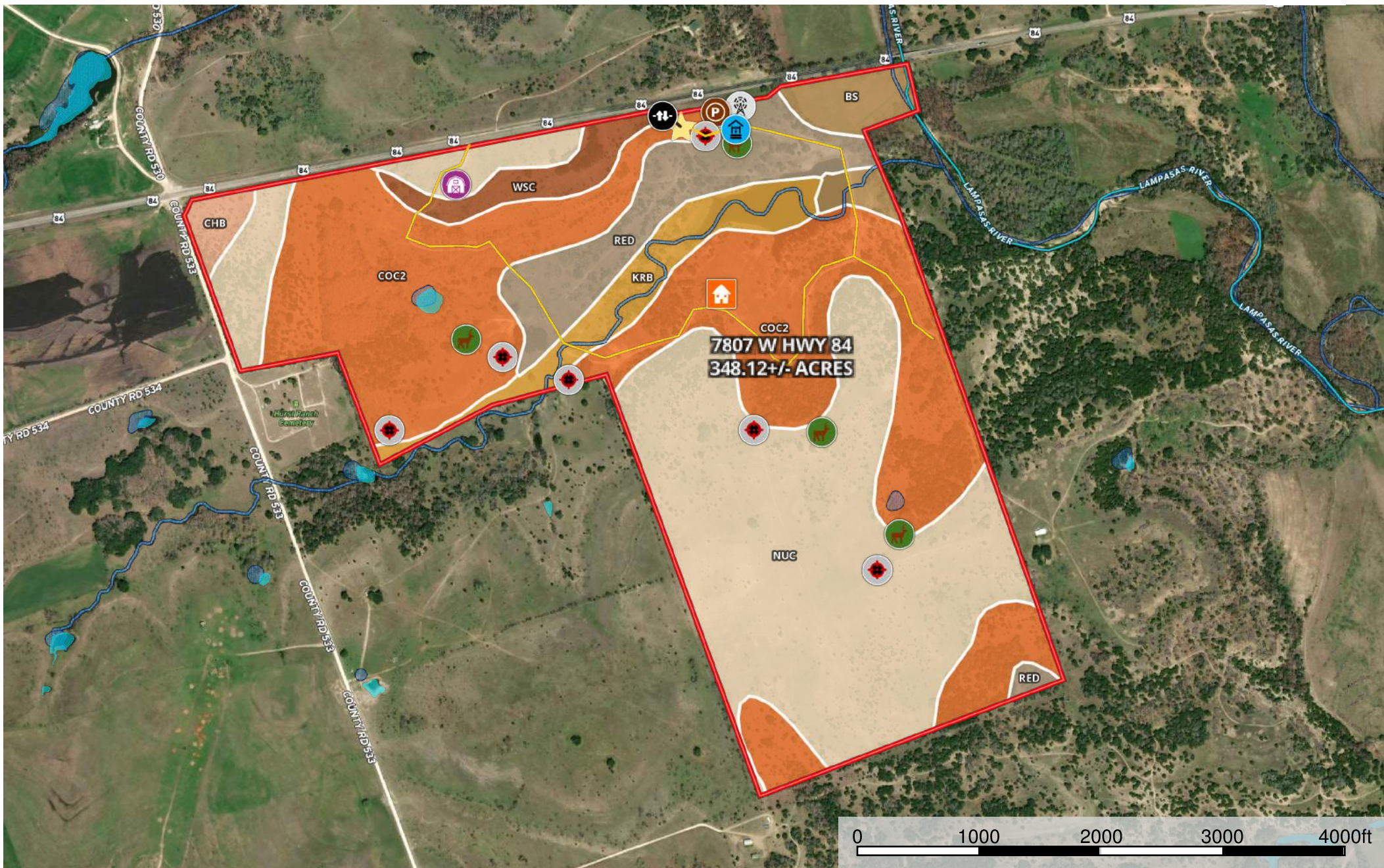


HK Enterprises - South Side 7736 W Hwy 84 348.12 Acres
Hamilton County, Texas, 348.12 AC +/-



- | | | | | | | | | | | | | | | | | | | | | | | | | | | | |
|--|-------------|--|------------|--|------|--|------|--|----------|--|------|--|--------|--|-------|--|------|--|----------|--|--------------|--|----------|--|----------|--|----------------------|
| | Gate | | House | | Barn | | Well | | Windmill | | Pens | | Feeder | | Blind | | Star | | Boundary | | Primary Road | | Wetlands | | Riparian | | Stream, Intermittent |
| | River/Creek | | Water Body | | | | | | | | | | | | | | | | | | | | | | | | |









SOIL CODE	SOIL DESCRIPTION	ACRES	%	CAP
Bs	Bosque clay loam, occasionally flooded	10.8	3.13	2w
CoC2	Cisco fine sandy loam, 1 to 5 percent slopes, eroded	138.6	40.2	3e
NuC	Nuff silty clay loam, 2 to 6 percent slopes, very stony	133.7	38.79	6s
KrB	Krum silty clay, cool, 1 to 5 percent slopes	18.0	5.23	3e
WsC	Wise clay loam, 3 to 5 percent slopes, moderately eroded	10.0	2.91	3e
ReD	Doss-Real complex, 1 to 8 percent slopes	29.7	8.61	6e
ChB	Cho gravelly clay loam, 1 to 3 percent slopes	3.9	1.14	4s
TOTALS		344.7	100%	4.4

Capability Legend

Increased Limitations and Hazards

Decreased Adaptability and Freedom of Choice Users

Land, Capability

								
	1	2	3	4	5	6	7	8
'Wild Life'	•	•	•	•	•	•	•	•
Forestry	•	•	•	•	•	•	•	
Limited	•	•	•	•	•	•	•	
Moderate	•	•	•	•	•	•		
Intense	•	•	•	•	•			
Limited	•	•	•	•				
Moderate	•	•	•					
Intense	•	•						
Very Intense	•							

Grazing Cultivation

(c) climatic limitations (e) susceptibility to erosion

(s) soil limitations within the rooting zone (w) excess of water