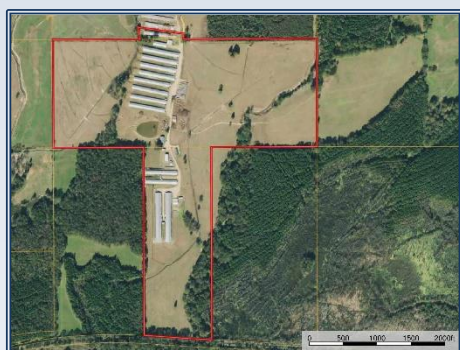




This is a great turnkey farm that's a combination of 12 poultry broiler houses and 151 acres premium cattle pastureland. All the broiler houses are heated with natural gas that gives you a huge advantage in reduced utility bills. The property is located in Union, MS. The farm has 12 broiler houses that grow a target weight 8 lb chicken for a major poultry company that gives long contracts. Two of the broiler houses are 4 years old and are 66' x 600'. All other houses are in great shape with updated equipment. The farm has great income history from both poultry and cattle. The land is completely fenced and crossed fenced, electric fencing and barbed, cattle guards and has 1 barn for hay and working cattle. The land has pretty rolling hills with scattered mature trees and a large, stocked pond and creek. The sale includes 2 nice tractors and implements to work the farm. This is a perfect farm for a large family and comes with 1 residence, 1 duplex and 1 mobile home. Showing by appointments.

10380 Road 1105, Union

32.593625, -89.272484 GPS



\$3,349,000

151 Acres
MLS #134301
UC #23042-34301



Jeff Daughdrill
jeffdaughdrill@bellsouth.net
Office: (601) 250-0017
Cell: (601) 810-5511
SouthernStatesRealty.com