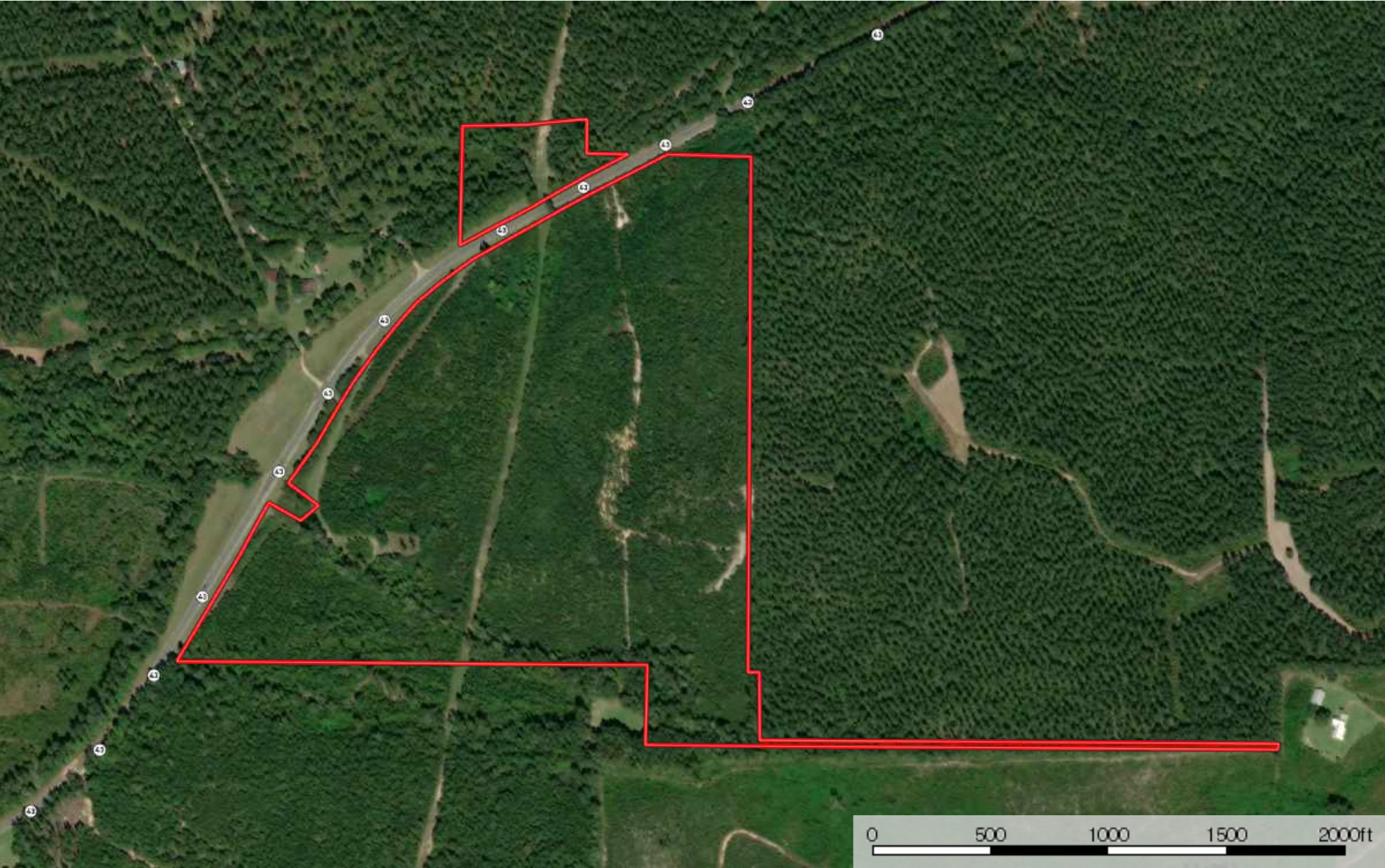

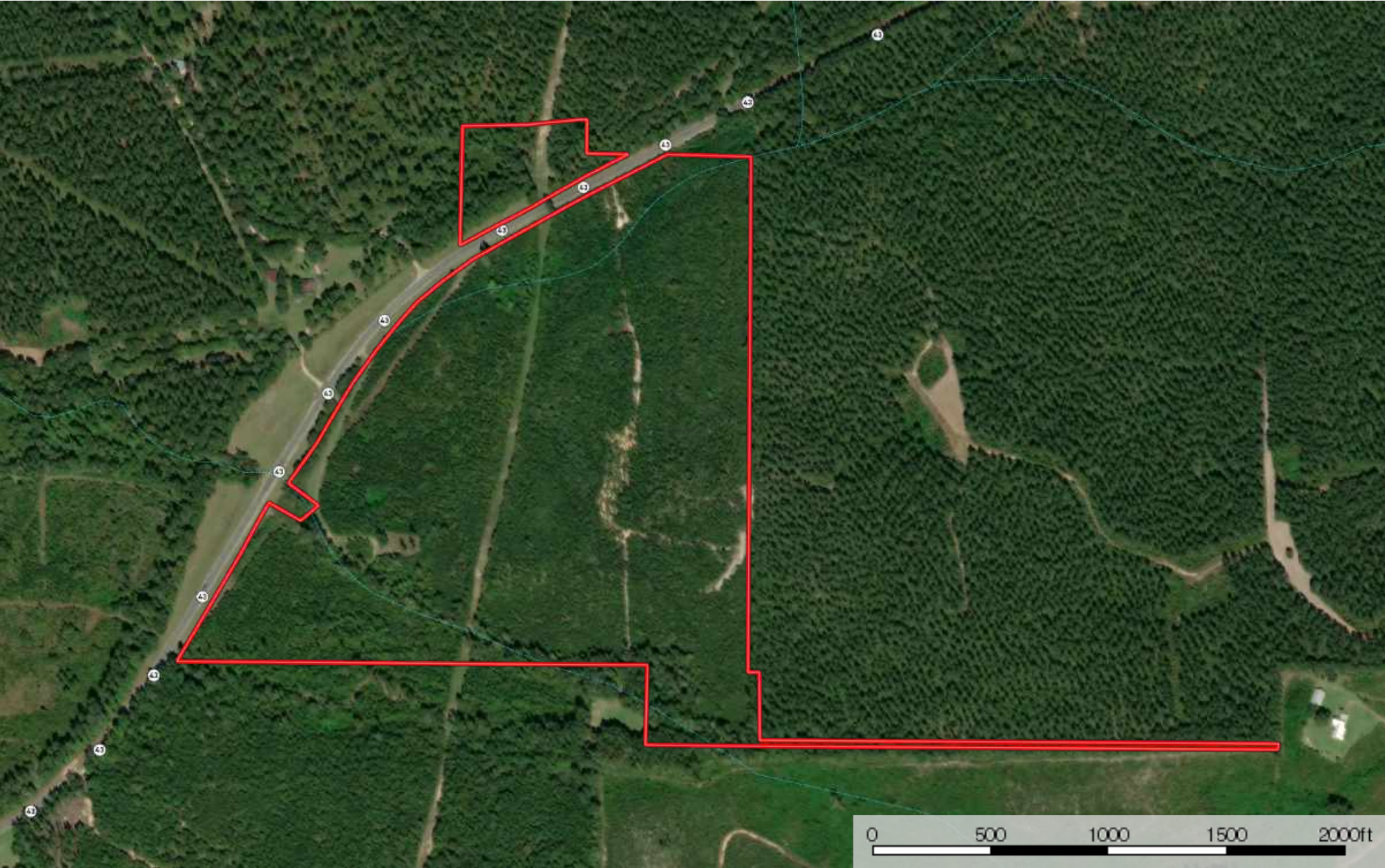
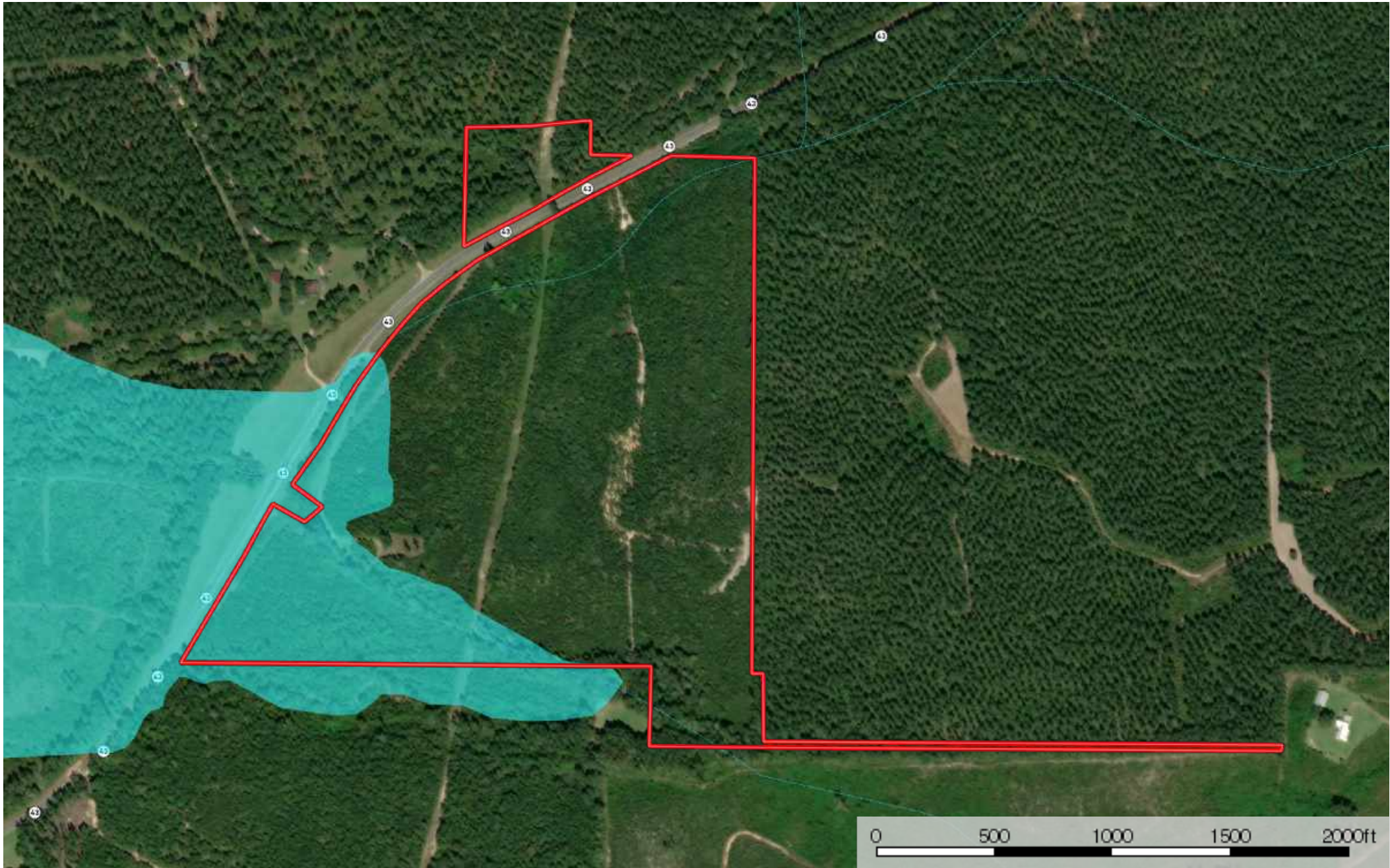
 Boundary

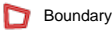
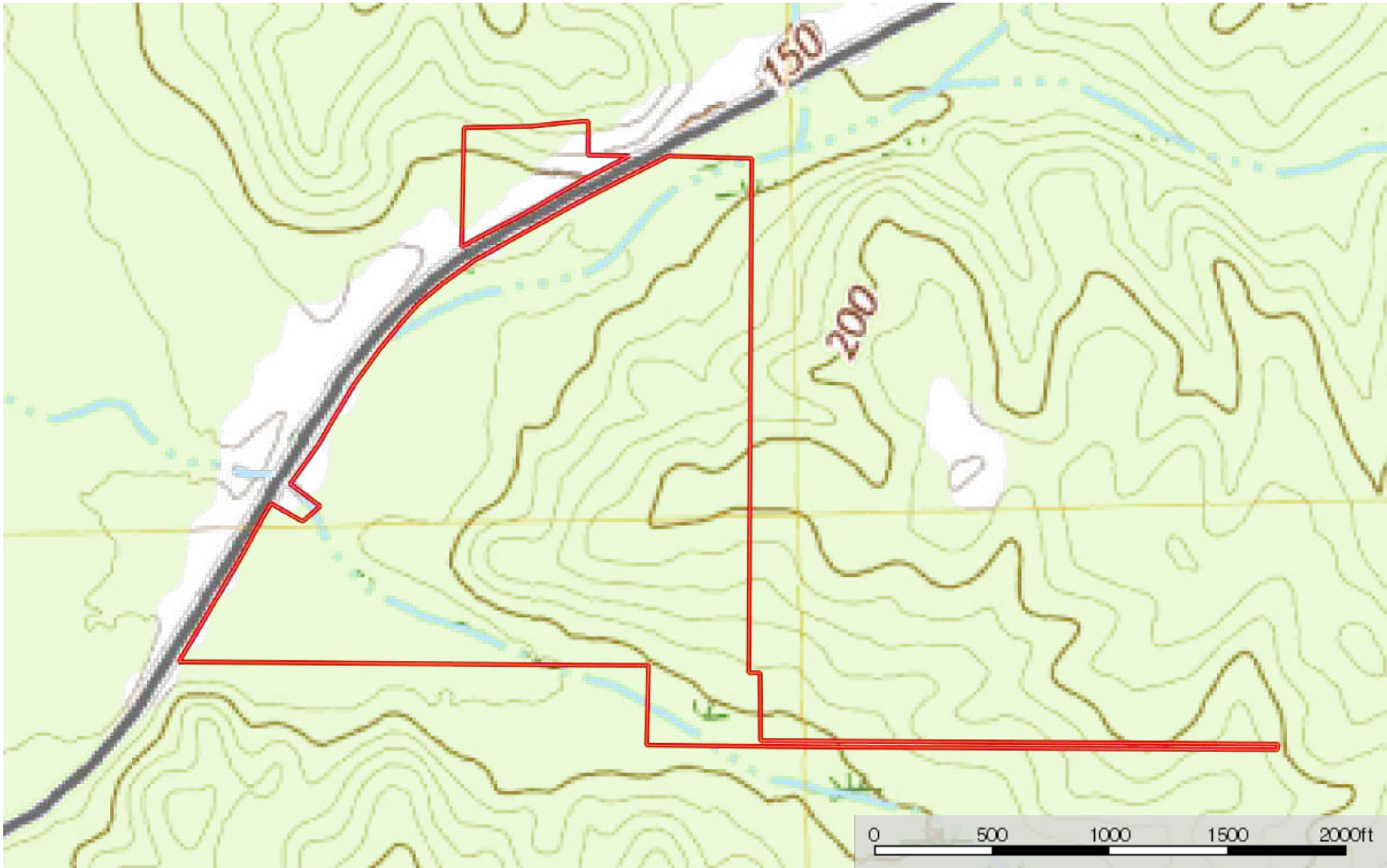


 Boundary



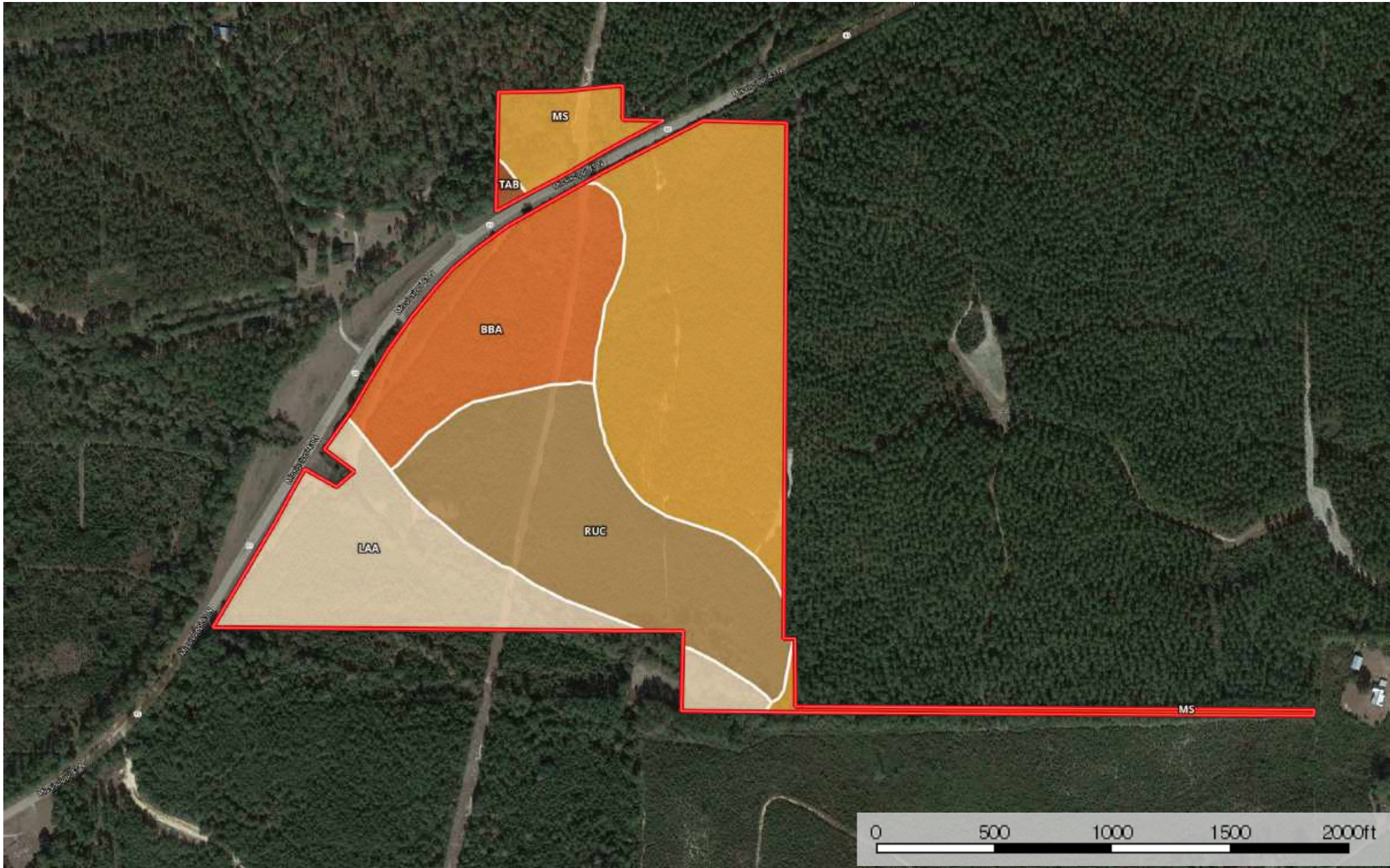
 Boundary
 Stream, Intermittent
 River/Creek
 Water Body






Boundary





 Boundary

|  All Polygons 67.0 ac

SOIL CODE	SOIL DESCRIPTION	ACRES	%	CAP
RuC	Ruston fine sandy loam, 5 to 8 percent slopes	16.8	25.05	3e
BbA	Bassfield sandy loam, 0 to 3 percent slopes	11.8	17.55	2s
LaA	Latonia fine sandy loam, 0 to 2 percent slopes	12.7	18.9	2s
MS	McLaurin-Smithdale association, rolling	25.5	38.1	3e
TaB	Troup sand, 2 to 8 percent slopes	0.3	0.39	4s
TOTALS		67.0	100%	2.64

|  Boundary 63.6 ac

SOIL CODE	SOIL DESCRIPTION	ACRES	%	CAP
RuC	Ruston fine sandy loam, 5 to 8 percent slopes	16.8	26.41	3e
BbA	Bassfield sandy loam, 0 to 3 percent slopes	11.8	18.5	2s
LaA	Latonia fine sandy loam, 0 to 2 percent slopes	12.7	19.93	2s
MS	McLaurin-Smithdale association, rolling	22.4	35.16	3e
TOTALS		63.6	100%	2.62

|  Boundary 3.5 ac






SOIL CODE	SOIL DESCRIPTION	ACRES	%	CAP
TaB	Troup sand, 2 to 8 percent slopes	0.3	7.63	4s
MS	McLaurin-Smithdale association, rolling	3.2	92.37	3e
TOTALS		3.5	100%	3.08

Capability Legend

Increased Limitations and Hazards

Decreased Adaptability and Freedom of Choice Users

Land, Capability

								
	1	2	3	4	5	6	7	8
'Wild Life'	•	•	•	•	•	•	•	•
Forestry	•	•	•	•	•	•	•	
Limited	•	•	•	•	•	•	•	
Moderate	•	•	•	•	•	•		
Intense	•	•	•	•	•			
Limited	•	•	•	•				
Moderate	•	•	•					
Intense	•	•						
Very Intense	•							

Grazing Cultivation

(c) climatic limitations (e) susceptibility to erosion

(s) soil limitations within the rooting zone (w) excess of water