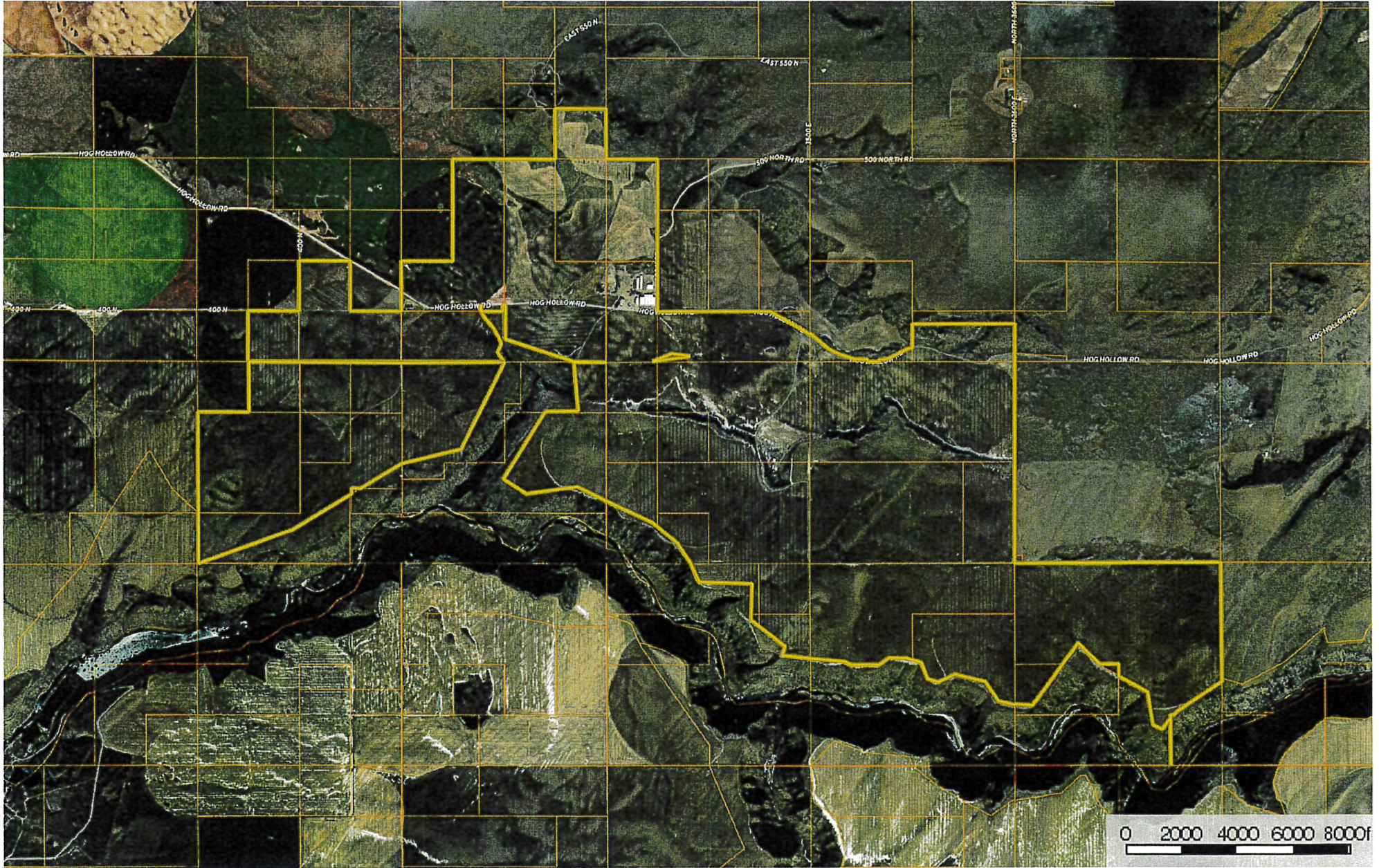
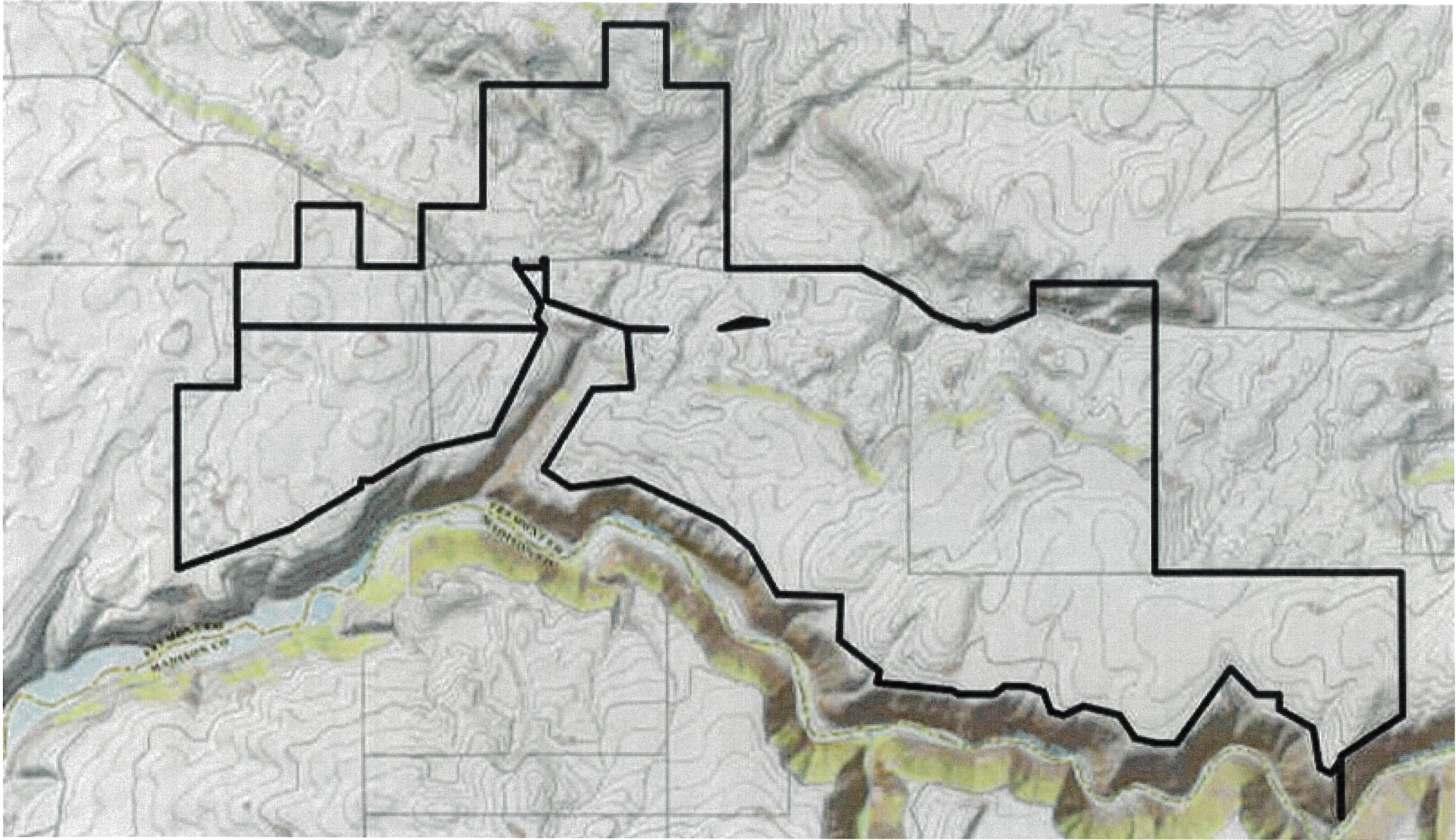


ARKINSON State Farm Auction  
Tremont County, Idaho, 3.662 AC +/-



 Boundary



**Tract Number:** 3180      **Description** combined all tracts with same ownership

**FSA Physical Location :** Fremont, ID

**ANSI Physical Location:** Fremont, ID

**BIA Range Unit Number:**

**HEL Status:** HEL: conservation system is being actively applied

**Recon Number**

**Wetland Status:** Tract does not contain a wetland

2009 - 83

**WL Violations:** None

|                           |                           |                               |                       |                |                     |            |
|---------------------------|---------------------------|-------------------------------|-----------------------|----------------|---------------------|------------|
| <b>Farmland</b>           | <b>Cropland</b>           | <b>DCP Cropland</b>           | <b>WBP</b>            | <b>WRP/EWP</b> | <b>CRP Cropland</b> | <b>GRP</b> |
| 3435.0                    | 2733.44                   | 2733.44                       | 0.0                   | 0.0            | 0.0                 | 0.0        |
| <b>State Conservation</b> | <b>Other Conservation</b> | <b>Effective DCP Cropland</b> | <b>Double Cropped</b> | <b>MPL/FWP</b> | <b>Native Sod</b>   |            |
| 0.0                       | 0.0                       | 2733.44                       | 0.0                   | 0.0            | 0.0                 |            |

|                          |                     |                  |                              |
|--------------------------|---------------------|------------------|------------------------------|
| <b>Crop</b>              | <b>Base Acreage</b> | <b>PLC Yield</b> | <b>CCC-505 CRP Reduction</b> |
| WHEAT                    | 1628.54             | 89               | 0.0                          |
| <b>Total Base Acres:</b> | 1628.54             |                  |                              |

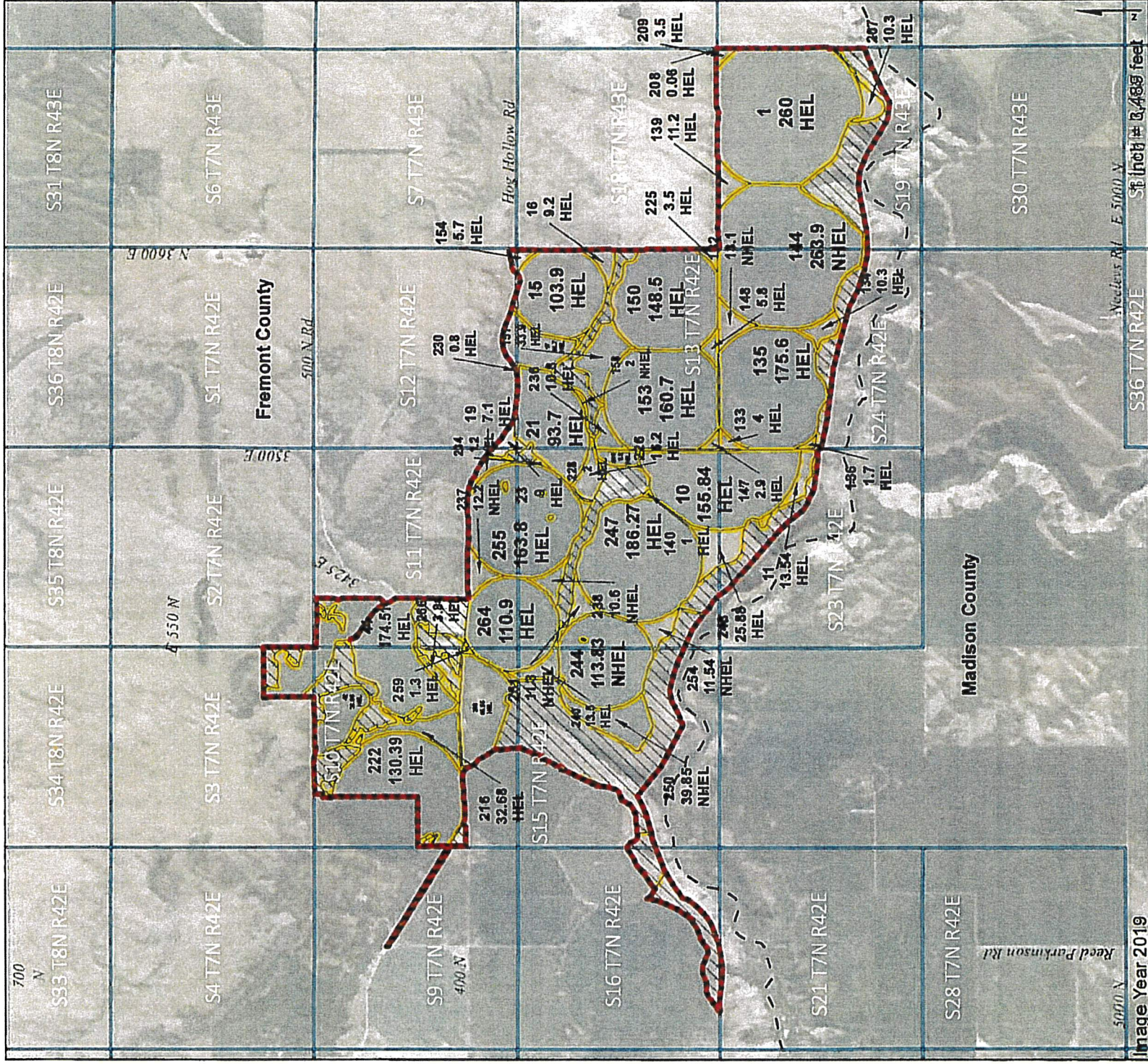


Image Year 2019

- Common Land Unit**
- Tract Boundary
  - PLSS
  - Non-Cropland
  - Cropland
  - County Boundary

- Wetland Determination Identifiers**
- Restricted Use
  - Limited Restrictions
  - Exempt from Conservation Compliance Provisions

Tract Cropland Total: 2733.44 acres

**2020 Program Year**

Map Created May 20, 2020

**#3741 Farm 3578**  
**Tract 3180**

United States Department of Agriculture (USDA) Farm Service Agency (FSA) maps are for FSA Program administration only. This map does not represent a legal survey or reflect actual ownership; rather it depicts the information provided directly from the producer and/or National Agricultural Imagery Program (NAIP) imagery. The producer accepts the data 'as is' and assumes all risks associated with its use. USDA-FSA assumes no responsibility for actual or consequential damage incurred as a result of any user's reliance on this data outside FSA Programs. Wetland identifiers do not represent the size, shape, or specific determination of the area. Refer to your original determination (CPA-026 and attached maps) for exact boundaries and determinations or contact USDA Natural Resources Conservation Service (NRCS).