

For Sale

Commercial Multipurpose  
Property

Topeka, KS

## 2926 SW 10th Ave

Topeka, KS 66604

### Property Highlights

- Lot Size is 15,202 SF +/-
- Building is 3600 SF +/-
- Visible to 2,625+ Vehicles Per Day
- Close to I-70/MacVicar Interchange
- Commercial Multipurpose property
- Corner lot with curb cut on both 10th and Wayne Ave
- Former Salon and liquor store



---

Sale Price: \$155,000

---

Lot Size: 15,202 SF +/-

---

Building Size: 3600 SF +/-

---

Zoning: C2

---

For more information:

**Brian Lensing**

800-895-4430 - Office

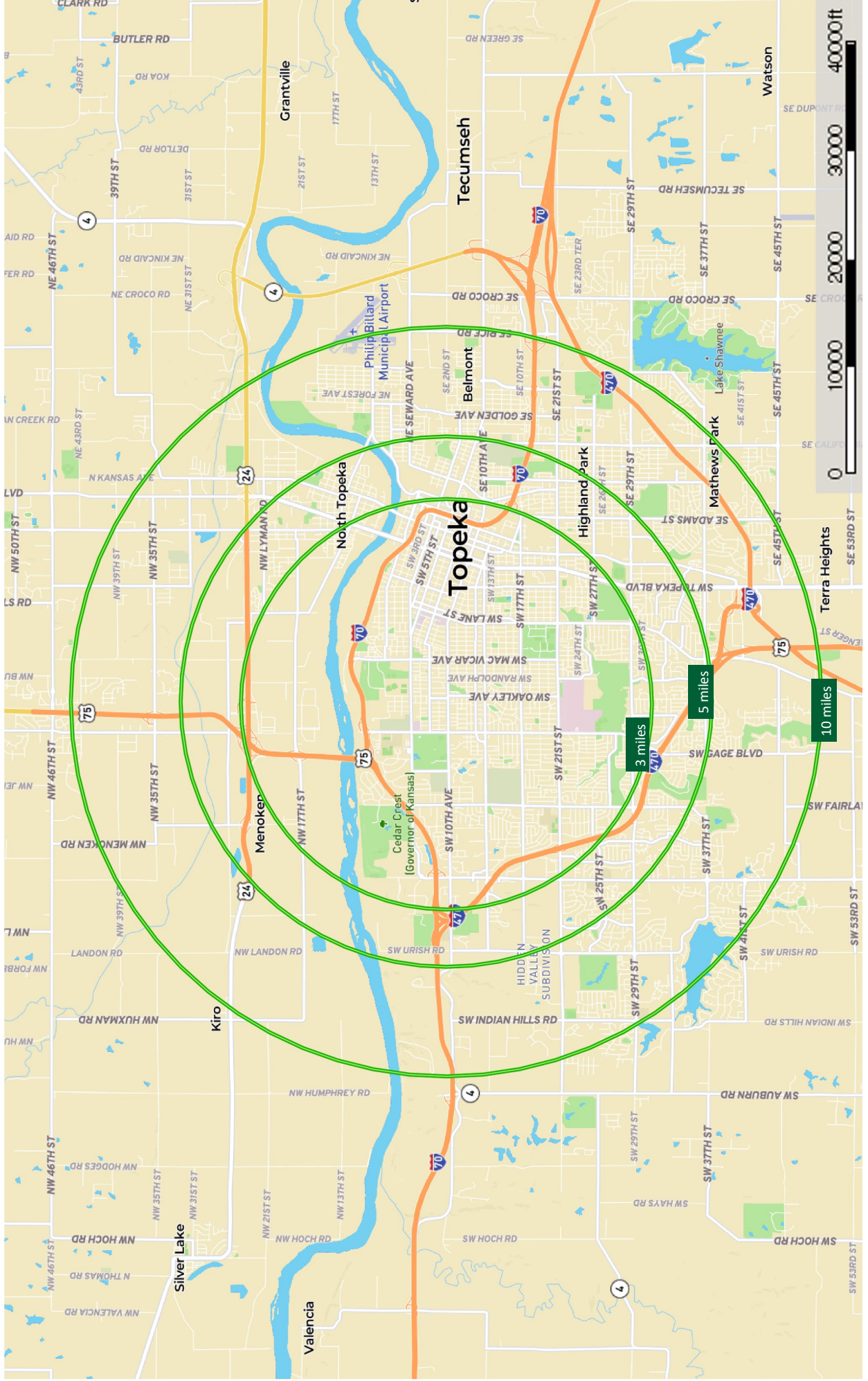
314-803-1103 - Cell

BrianL@UnitedCountryCommercial.com

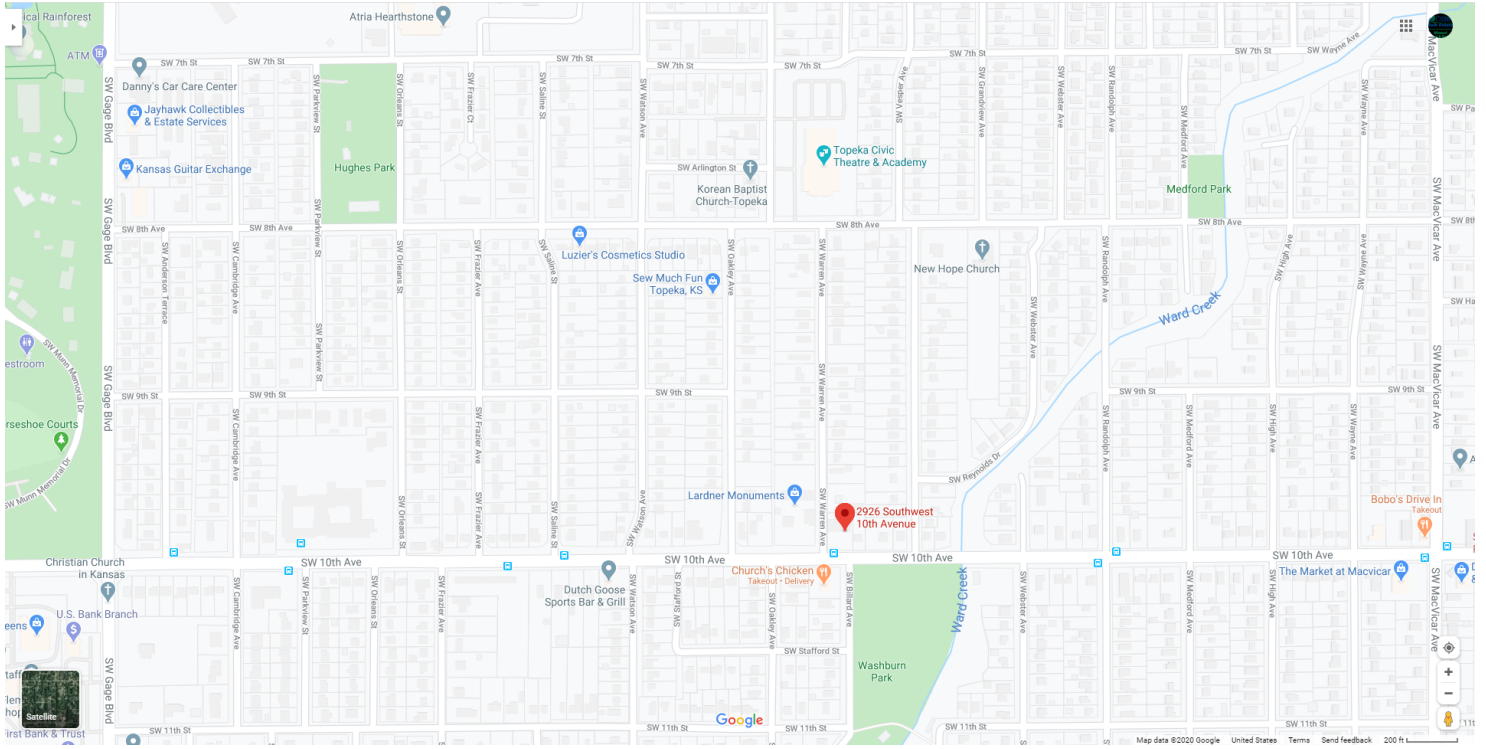


Commercial

# Commercial Multipurpose Building - Topeka, KS

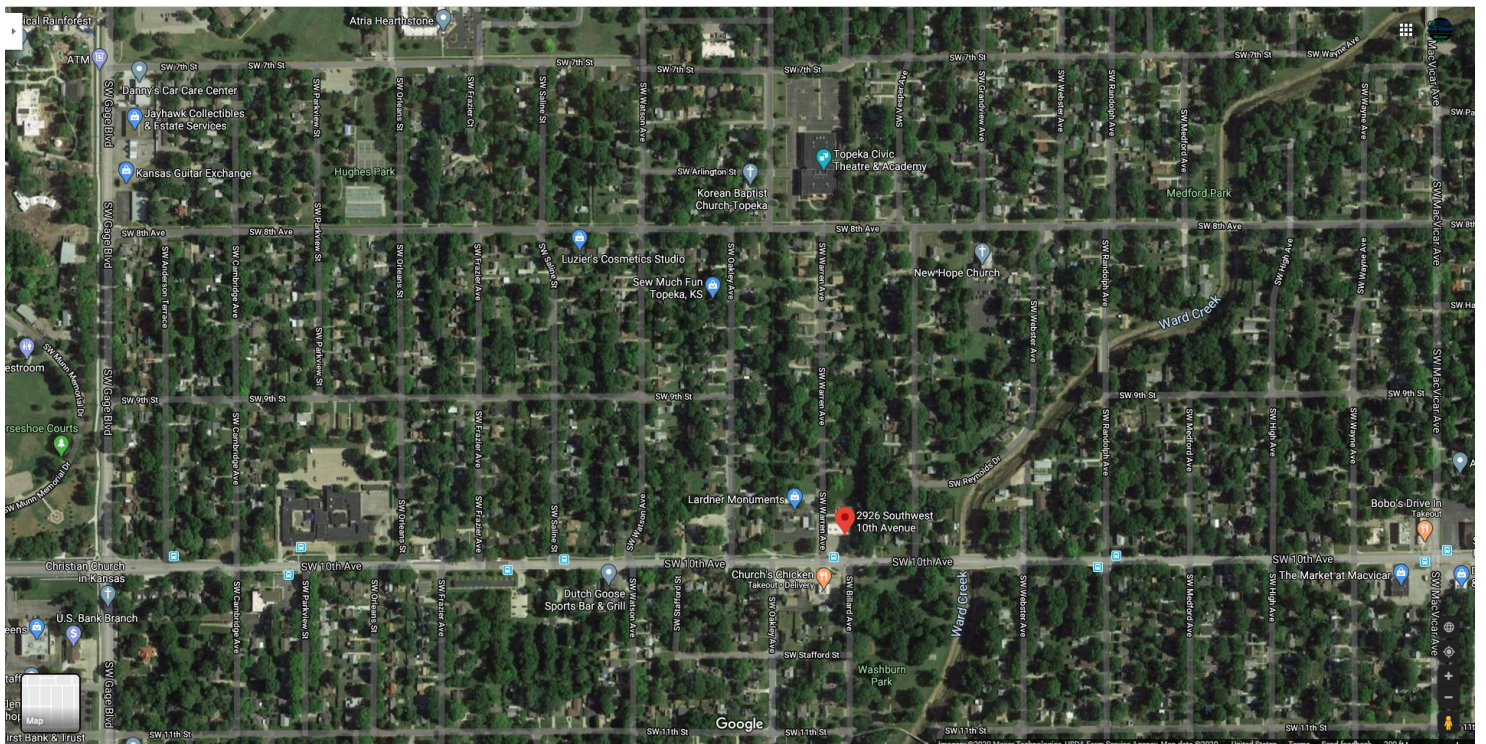


# Area Maps and Traffic Counts



## Traffic Count

Corner lot with curb on 10th Ave and Wayne Ave - 2,625+ Vehicles Per Day



Commercial