



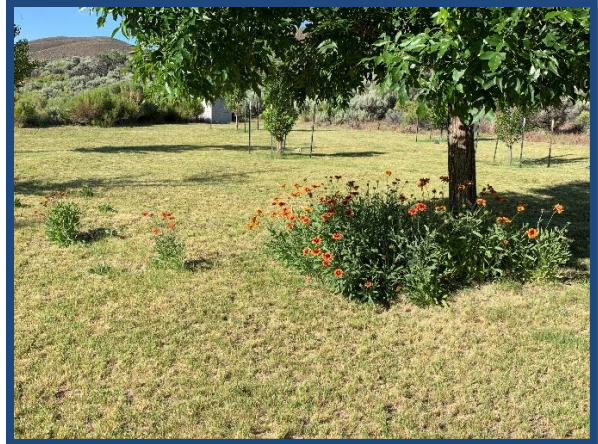
**Jett Blackburn
Real Estate Inc.**



Home on the Alvord

\$639,500

**Presented by
United Country Jett Blackburn Real Estate Inc.
707 Ponderosa Village
Burns, OR 97720
541/573-7206 (office) 541/573-5011 (fax)
web site: <http://www.jettblackburn.com>**



LOCATION: 34346 East Steens Rd, Princeton OR

ACREAGE: 156.28 +/- acres

IMPROVEMENTS: 1 – 1244 sq.ft. custom built home built started in 2007 & completed in 2011, 2 bdrm, 1 bath

1 – 480 sq.ft. detached finished garage

HEATING:

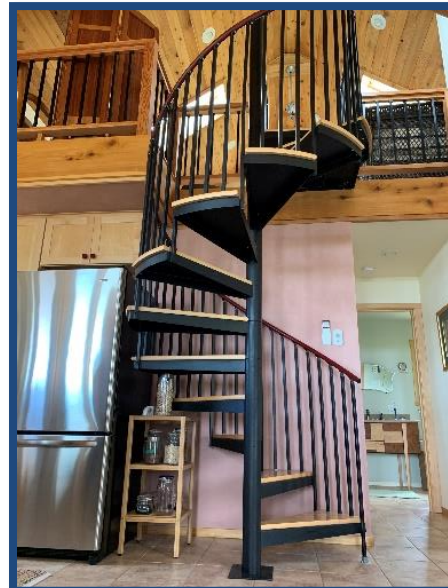
- Radiant floor heat
- Ductless air & heat
- Propane monitor stove

WELLS: 1 – Domestic

TAXES: \$1,410.67 (2019/2020)

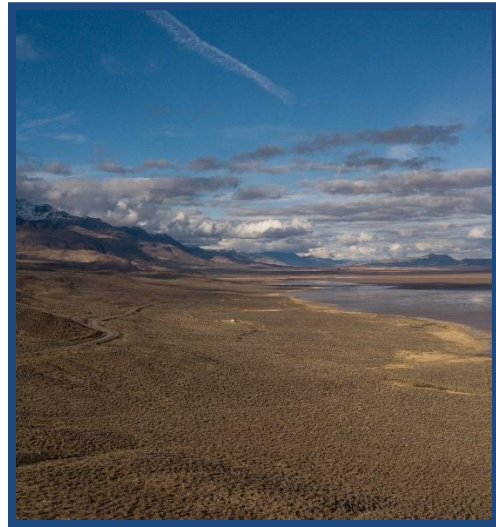
COMMENTS:

This property borders the Alvord Desert which is an expansive white cracked dry lake bed part of the year & a shallow lake the other part of the year creating beautiful panoramic views. Located at the foot of the east side of majestic Steens Mountains in South Eastern Oregon. This area is a playground for those that love the high desert with jaw dropping views. The Alvord Desert hosts a large variety of unique activity and is well known for land sailing, airplane & glider fly ins, and hot air balloons in the fall. The Steens Mountain Range is a 52 miles long background to this property with great hiking & bike trails and after a long day of hiking just up the road is the Alvord Hot Springs or you can relax in your own private hot tub on your deck.



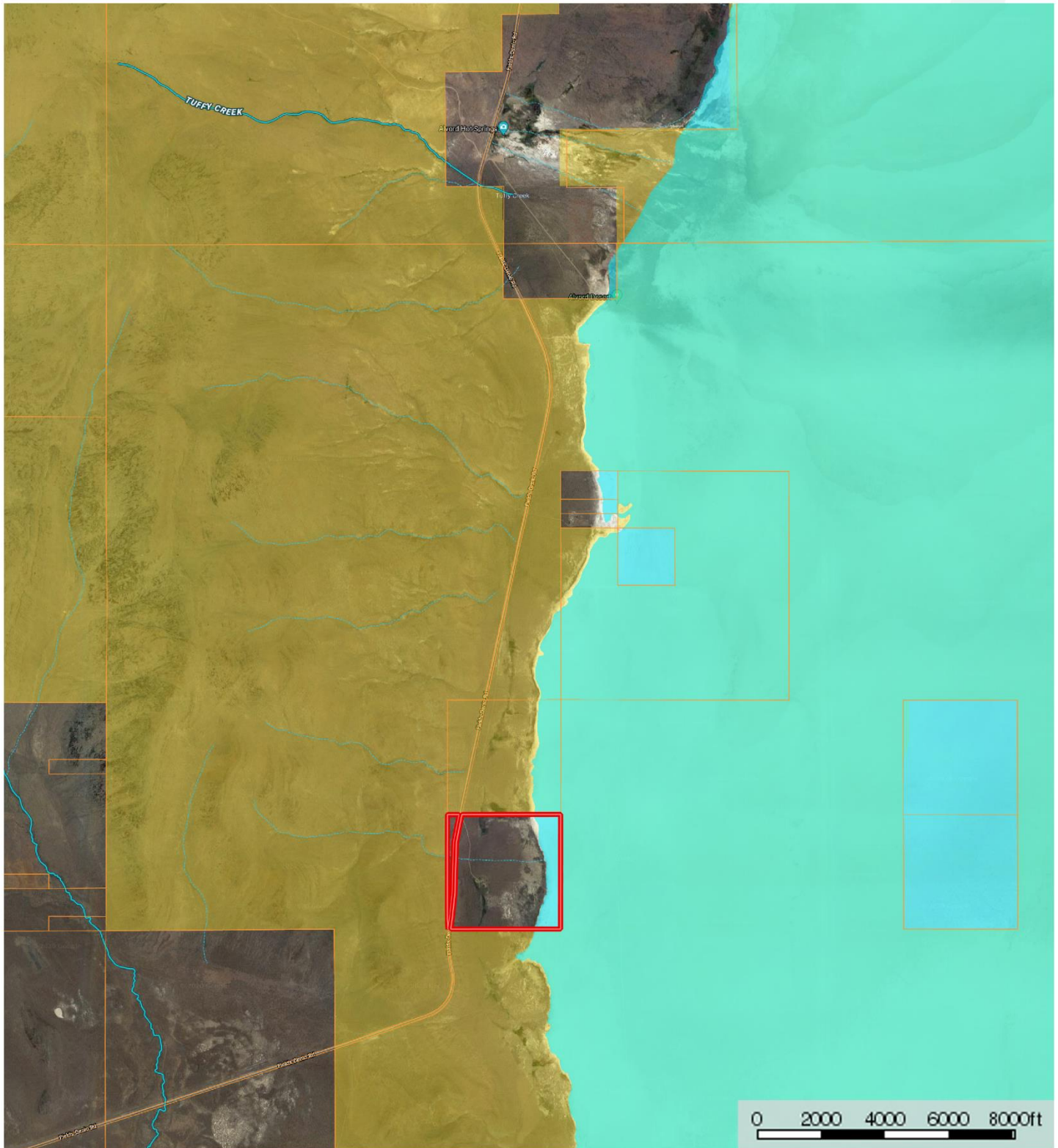


The home improvements compliment this remarkable environment with numerous custom touches to take in the fantastic setting with views of the Alvord and Steens Mountains. The sunrise and sunsets are amazing in the area plus great star gazing. The house sits close to the middle of the property with a large yard that has an underground sprinkler system on part of it and a shallow water table (spring like) for the rest. There are several trees which include 2 apple, 2 cherry, an apricot, peach & nectarine. On the edge of the yard is a wildlife pond to sit by that is fed from the artesian domestic well that is stocked with goldfish. The outside of the home is low maintenance with HardiePlank siding & a metal roof. The wrap around deck is made with Trex decking and has a hot tub to relax in. This custom built home has an open floor concept with large wood framed windows and vaulted open beam ceiling. The flooring in the house is a mixture of tile & bamboo flooring and solid wood interior doors. The kitchen has a nice bar to sit at, custom cabinets and gas stove. Next to the kitchen is an oversized utility room with on demand hot water heater, radiant floor heating system and room to store your extras. The loft is a fantastic bedroom with skylights and strategically placed windows for incredible views. This is truly a great place to escape the busy city lifestyle and enjoy your recreational needs!



Lawlor


Oregon, 160 AC +/-



Curt Blackburn
 P: 541-573-7206

office@jettblackburn.com

707 Ponderosa Village, Burns, OR 97720


 The information contained herein was obtained from sources deemed to be reliable. MapRight Services makes no warranties or guarantees as to the completeness or accuracy thereof.

Lawlor
Oregon, 160 AC +/-




 Boundary  Stream, Intermittent  River/Creek  Water Body

Curt Blackburn
P: 541-573-7206

office@jettblackburn.com

707 Ponderosa Village, Burns, OR 97720

 The information contained herein was obtained from sources deemed to be reliable. MapRight Services makes no warranties or guarantees as to the completeness or accuracy thereof.