

**All Measurements are for
FSA Programs Only
Wetland Determination Identifiers**

- Restricted Use
- ▼ Limited Restrictions
- Exempt from Conservation Compliance Provisions

Disclaimer: Wetland identifiers do not represent the size, shape or specific determination of the area. Refer to your original determination (CPA-026 and attached maps) for exact wetland boundaries and determinations, or contact NRCS.

Saline Co. FSA

CORN=CORN-YEL-GR SB=SOYBN-COM-GR
 O=OATS-SPR-FG CLOVR=CLOVR-RED-FG
 Hay=MIXFG-IGS-FG GZ=MIXFG-IGS-GZ
 WHT=WHEAT-SRW-GR Milo=SORGF-SUD-FG
 LS=MIXFG-IGS-LS ALF=ALFAL-FG
 CCM=covrc-mix-co CCB=covrc-bob-co
 CCC=covrc-ceg-co CCL=covrc-lum-co
 *Unless notated on Map

1 inch equals 660 feet

Program Year: 2020

Created: 9/10/2019

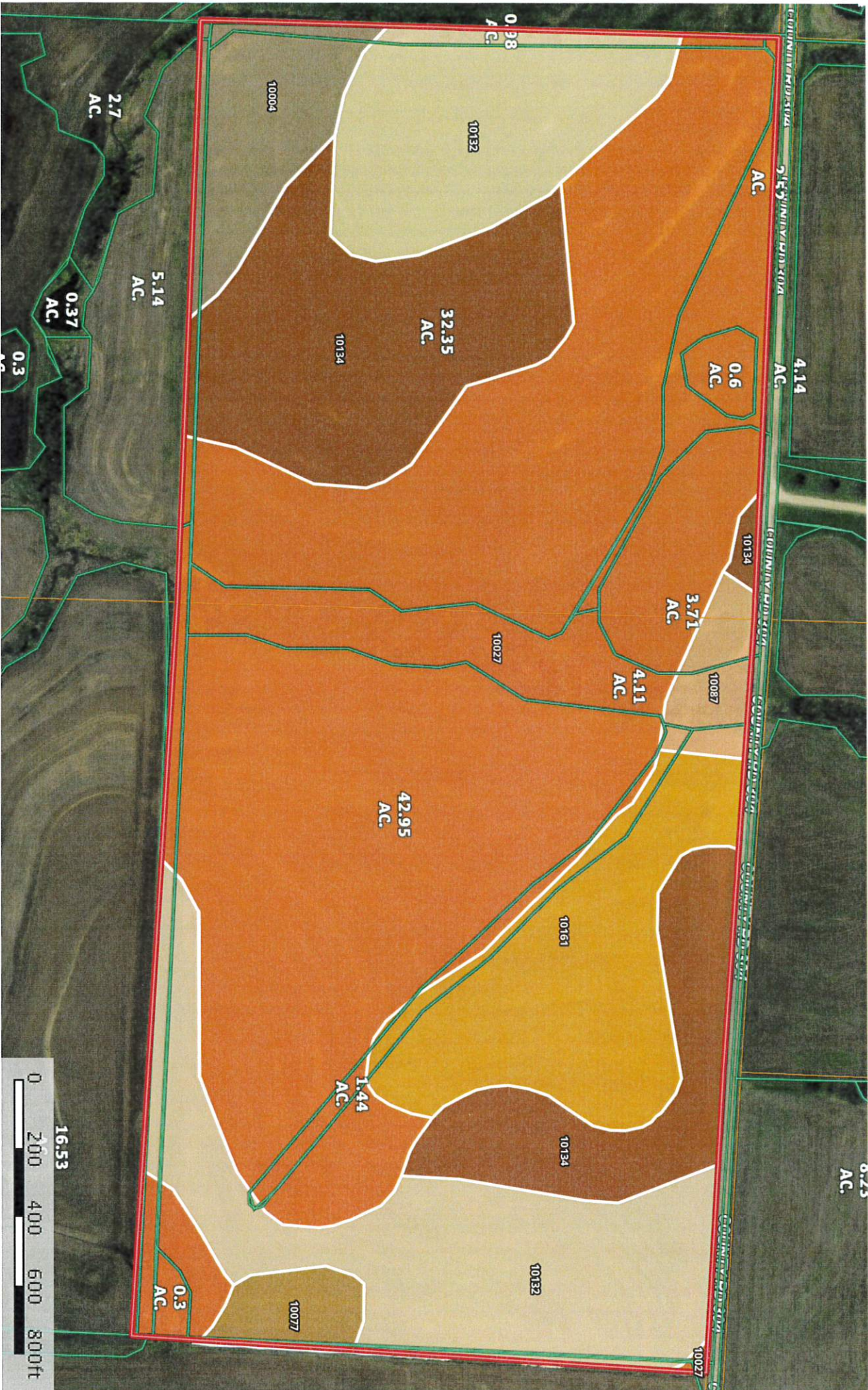
Flown: 2018-07-13



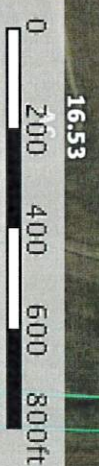
- clu
- crp
- plss

**Farm 6517
Tract 8761**

Sweet Springs Gregory Missouri, AC +/-



Boundary



Kurt Hollenberg
P: 800-895-4430

www.MissouriLandAndHome.com

3600 I-70 Dr SE, Columbia, MO. 65201



The information contained herein was obtained from sources deemed to be reliable. MapRight Services makes no warranties or guarantees as to the completeness or accuracy thereof.

|  Boundary 90.6 ac

| SOIL CODE | SOIL DESCRIPTION | ACRES | % | CAP |
|-----------|---|-------|-------|-----|
| 10077 | Macksburg silt loam, 0 to 5 percent slopes | 1.2 | 1.34 | 2e |
| 10027 | Higginsville silt loam, 5 to 9 percent slopes, eroded | 45.3 | 50.06 | 3e |
| 10132 | Sibley silt loam, 2 to 5 percent slopes | 17.1 | 18.84 | 2e |
| 10161 | Greenton silt loam, 5 to 9 percent slopes, eroded | 7.9 | 8.67 | 3e |
| 10134 | Sibley silt loam, 5 to 9 percent slopes, eroded | 14.1 | 15.56 | 3e |
| 10004 | Arispe silt loam, 5 to 9 percent slopes, eroded | 3.6 | 3.99 | 3e |
| 10087 | Mandeville silt loam, 5 to 9 percent slopes, eroded | 1.4 | 1.54 | 3e |
| TOTALS | | 90.6 | 100% | 2.8 |

Capability Legend

Increased Limitations and Hazards

Decreased Adaptability and Freedom of Choice Users

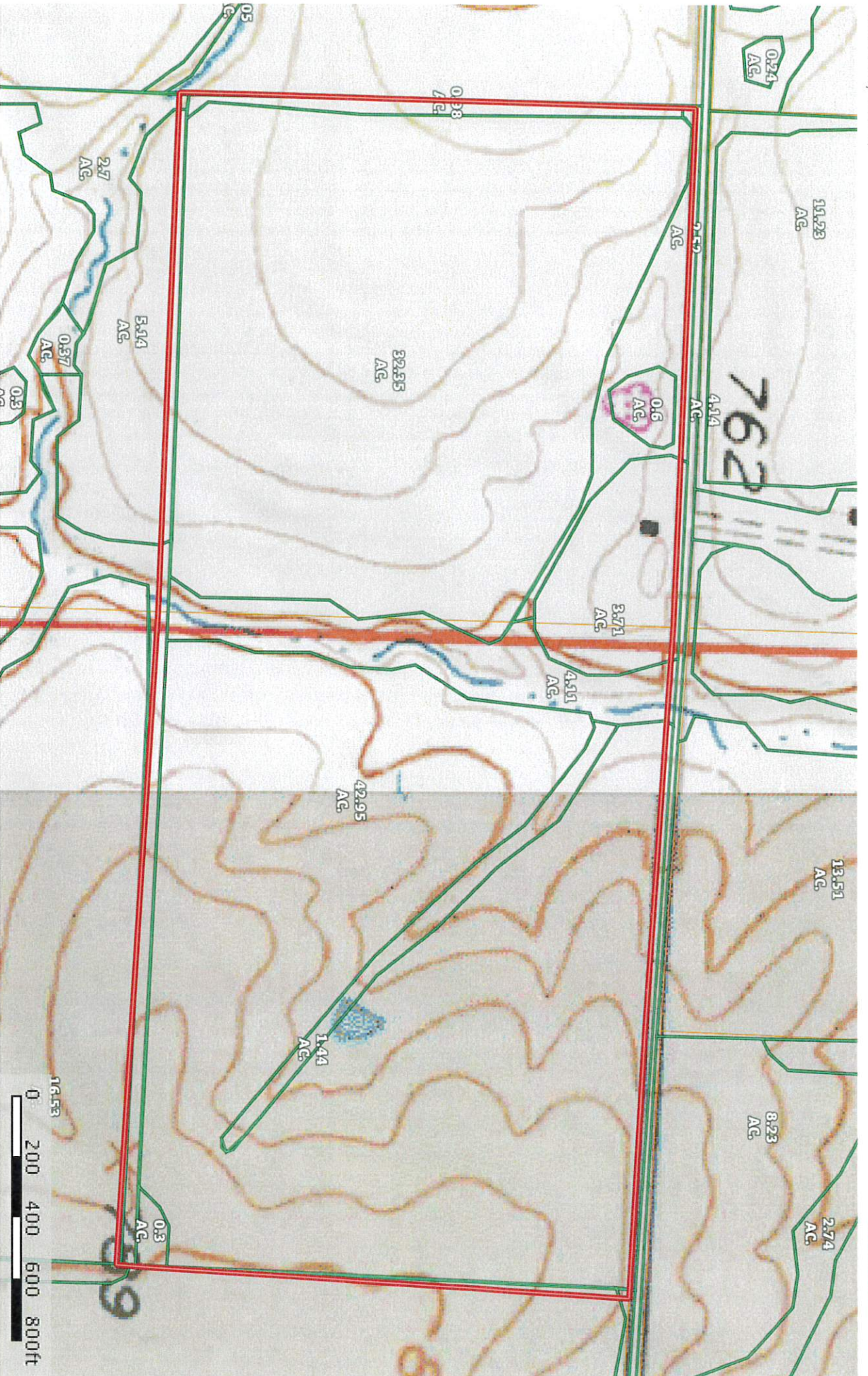
Land, Capability

| | 1 | 2 | 3 | 4 | 5 | 6 | 7 | 8 |
|--------------|---|---|---|---|---|---|---|---|
| 'Wild Life' | • | • | • | • | • | • | • | • |
| Forestry | • | • | • | • | • | • | • | |
| Limited | • | • | • | • | • | • | • | |
| Moderate | • | • | • | • | • | • | | |
| Intense | • | • | • | • | • | | | |
| Limited | • | • | • | • | | | | |
| Moderate | • | • | • | | | | | |
| Intense | • | • | | | | | | |
| Very Intense | • | | | | | | | |

Grazing Cultivation

- (c) climatic limitations (e) susceptibility to erosion
- (s) soil limitations within the rooting zone (w) excess of water

Sweet Springs Gregory
Missouri, AC +/-



Boundary

Kurt Hollenberg
P: 800-895-4430

www.MissourilandAndHome.com

3600 I-70 Dr SE, Columbia, MO. 65201

The information contained herein was obtained from sources deemed to be reliable. MapRight Services makes no warranties or guarantees as to the completeness or accuracy thereof.