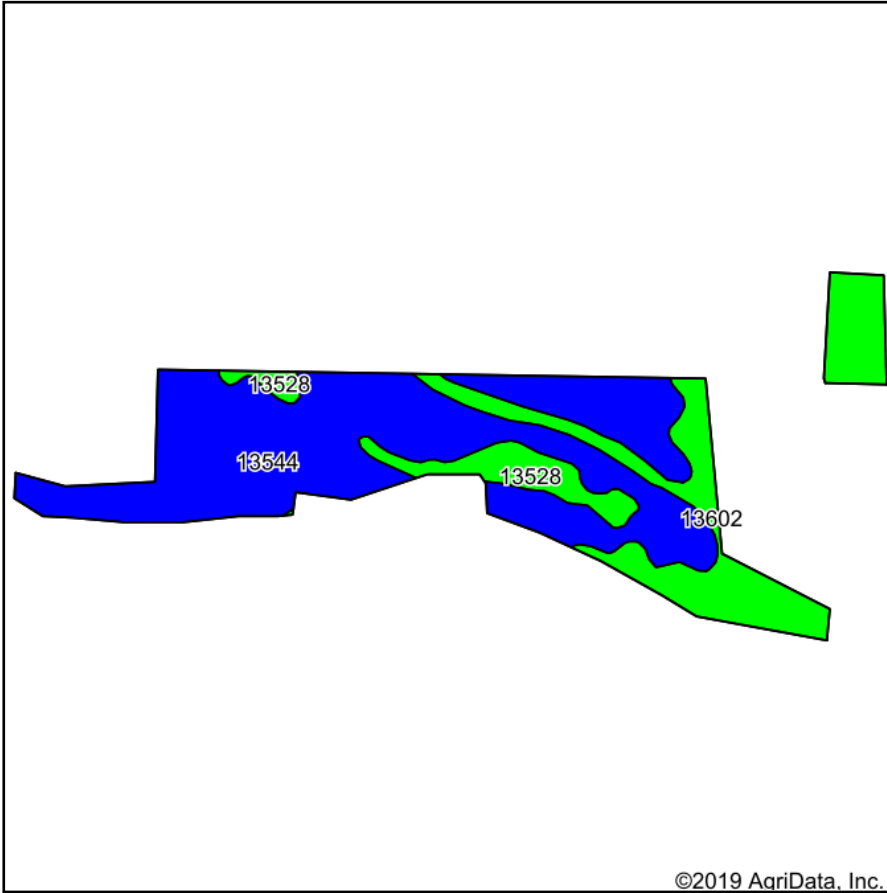
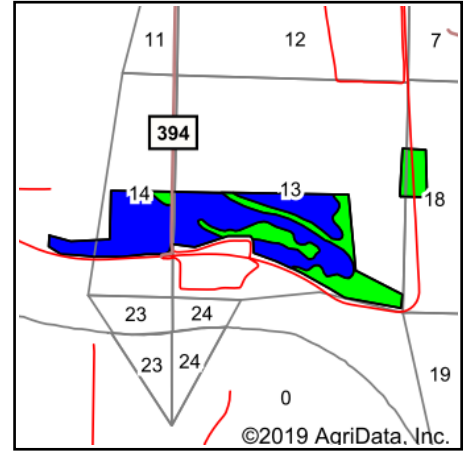


Soils Map



Soils data provided by USDA and NRCS.



State: **Missouri**
 County: **Andrew**
 Location: **13-58N-36W**
 Township: **Lincoln**
 Acres: **232.47**
 Date: **9/13/2019**



Area Symbol: MO003. Soil Area Version: 19											
Code	Soil Description	Acres	Percent of field	Non-Irr Class Legend	Non-Irr Class *c	Common bermudagrass	Orchardgrass red clover	Tall fescue	Warm season grasses	*n NCCPI Soybeans	
13544	Leta silty clay, 0 to 2 percent slopes, rarely flooded	154.89	66.6%	Blue	llw	8	7	8	9	65	
13602	Haynie silt loam, 0 to 2 percent slopes, rarely flooded	57.84	24.9%	Green	lw	7	8	8	10	70	
13528	Haynie very fine sandy loam, 0 to 2 percent slopes, rarely flooded	19.74	8.5%	Green	ls	7	9	8	10	71	
Weighted Average						7.7	7.4	8	9.3	*n 66.8	

*n: The aggregation method is "Weighted Average using major components"

*c: Using Capabilities Class Dominant Condition Aggregation Method

Soils data provided by USDA and NRCS.