

racine 120
Randolph County, Missouri, 120 AC +/-



 Boundary

Kurt Hollenberg
P: 800-895-4430

www.MissouriLandAndHome.com

3600 I-70 Dr SE, Columbia, MO, 65201



The information contained herein was obtained from sources deemed to be reliable. MapRight Services makes no warranties or guarantees as to the completeness or accuracy thereof.

racine 120
 Randolph County, Missouri, 120 AC +/-



Boundary

Kurt Hollenberg
 P- 800-895-4430

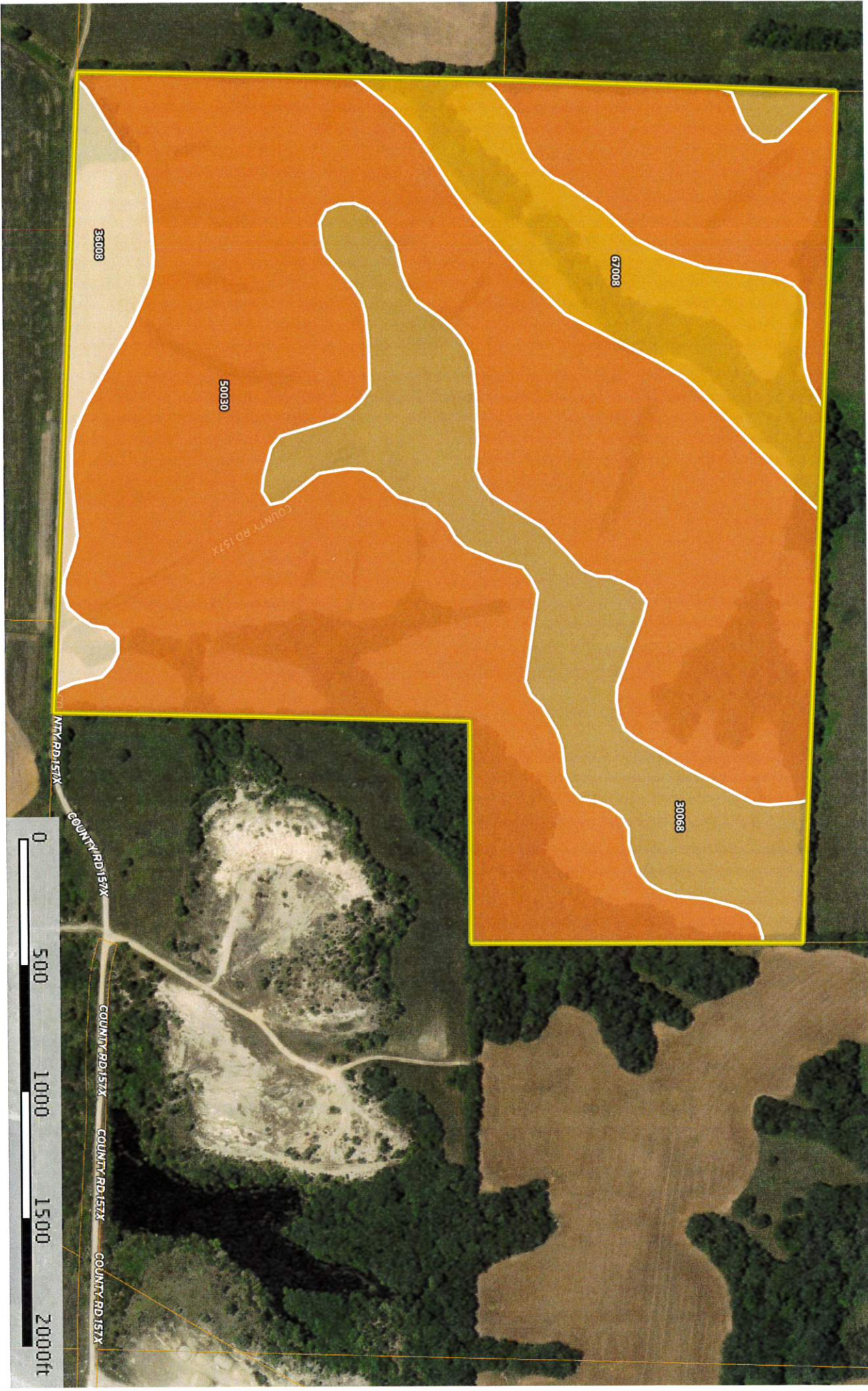
www.MissouriLandAndHome.com

3800 I-70 Dr. SE, Columbia, MO, 65201



The information contained herein was obtained from sources deemed to be reliable. MapRight Services makes no warranties or guarantees as to the completeness or accuracy thereof.

Racine 120
Randolph County, Missouri, 120 AC +/-



 Boundary

Kurt Hollenberg
P: 800-895-4430

www.MissouriLandAndHome.com

3600 I-70 Dr SE, Columbia, MO, 65201


The information contained herein was obtained from sources deemed to be reliable. MapRight Services makes no warranties or guarantees as to the completeness or accuracy thereof.

|  Boundary 120.5 ac

SOIL CODE	SOIL DESCRIPTION	ACRES	%	CAP
30068	Gorin silt loam, 5 to 9 percent slopes, eroded	17.9	14.84	3e
50030	Keswick silt loam, 9 to 20 percent slopes, eroded	85.3	70.84	6e
36008	Bremer silt loam, 0 to 2 percent slopes, rarely flooded	5.3	4.37	3w
67008	Wilbur silt loam, 1 to 3 percent slopes, frequently flooded	12.0	9.95	3w
TOTALS		120.5	100%	5.13

Capability Legend

Increased Limitations and Hazards

Decreased Adaptability and Freedom of Choice Users

Land, Capability Class(non-irrigated)	1	2	3	4	5	6	7	8
'Wild Life'	•	•	•	•	•	•	•	•
Forestry	•	•	•	•	•	•	•	
Limited	•	•	•	•	•	•	•	
Moderate	•	•	•	•	•	•		
Intense	•	•	•	•	•			
Limited	•	•	•	•				
Moderate	•	•	•					
Intense	•	•						
Very Intense	•							

Grazing Cultivation

(c) climatic limitations (e) susceptibility to erosion

(s) soil limitations within the rooting zone (w) excess of water



S-8-T53N-R15W

S-17-T53N-R15W

CRD 2040

MO 3

**All Measurements are
For FSA Programs Only
Wetland Determination Identifiers**

- Restricted Use
- ▼ Limited Restrictions
- Exempt from Conservation Compliance Provisions

Disclaimer: Wetland identifiers do not represent the size, shape or specific determination of the area. Refer to your original determination (CPA-026 and attached maps) for exact wetland boundaries and determinations, or contact NRCS.

Chariton Co. FSA

- DC = Double Crop
- C = Corn - Yel - GR
- SB = Soybn - Com - GR
- Milo = Sorgh - GRS - GR
- Wht = Wheat - SRW - GR
- Hay = MIXFG - LGM - FG
- P - MIXFG - LGM - GZ
- LS - MIXFG - LGM - LS
- *Unless notated on Map

1:7,920

Program Year: 2019

Created: 5/14/2019

Flown: 2016-06-22

- clu
- crp
- plss

**Farm 5813
Tract 7584**



Missouri
 Chariton
 Report ID: FSA-156EZ

U.S. Department of Agriculture
 Farm Service Agency
 Abbreviated 156 Farm Record

FARM: 5813
 Prepared: 8/8/19 9:07 AM
 Crop Year: 2019
 Page: 3 of 6

DISCLAIMER: This is data extracted from the web farm database. Because of potential messaging failures in MIDAS, this data is not guaranteed to be an accurate and complete representation of data contained in the MIDAS system, which is the system of record for Farm Records.

Crop	Base Acreage	CTAP Tran Yield	PLC Yield	CCC-505 CRP Reduction
SOYBEANS	124.5		31	0.0
Total Base Acres:	138.5			

Owners: RACINE, SUSIE
 Other Producers: ENDERLE INC

Tract Number: 7584 Description C8/2B S8 T53 R15 29-175
 FSA Physical Location : Randolph, ANSI Physical Location: Randolph, MO
 BIA Range Unit Number:
 HEL Status: HEL Determinations not complete
 Wetland Status: Wetland determinations not complete
 WL Violations: None

Farmland	Cropland	DCP Cropland	WBP	WRP/EWP	CRP Cropland	GRP
120.27	93.24	93.24	0.0	0.0	0.0	0.0
State Conservation	Other Conservation	Effective DCP Cropland	Double Cropped	MPL/FWP		
0.0	0.0	93.24	1.5	0.0		

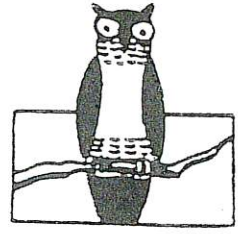
Crop	Base Acreage	CTAP Tran Yield	PLC Yield	CCC-505 CRP Reduction
WHEAT	18.1		42	0.0
CORN	17.8		106	0.0
GRAIN SORGHUM	0.2		76	0.0
SOYBEANS	58.6		31	0.0
Total Base Acres:	94.7			

Owners: RACINE, SUSIE
 Other Producers: ENDERLE INC



MILLER MANAGEMENT SERVICES, INC.

Ownership Plat Books - Ownership Wall Maps
 1390 East Boone Industrial Drive, Suite 100, Columbia, Mo., 65202 573-499-4814
 FAX 573-499-4819
 109 South Kansas, Marceline, Mo., 816-376-2755 • FAX 816-376-2468



Call us for all your mapping needs!

TOWNSHIP 53N • RANGE 15W

SEE PAGE 16

