

racine 78  
Missouri, 78 AC +/-

*north of Keytsville*




 Boundary

Kurt Hollenberg  
P: 800-895-4430

[www.MissouriLandAndHome.com](http://www.MissouriLandAndHome.com)

3600 I-70 Dr SE, Columbia, MO.


 The information contained herein was obtained from sources deemed to be reliable. MapRight Services makes no warranties or guarantees as to the completeness or accuracy thereof.



racine 78

Missouri, 78 AC +/-




 Boundary

Kurt Hollenberg  
P: 800-895-4430

[www.MissouriLandAndHome.com](http://www.MissouriLandAndHome.com)

3600 I-70 Dr SE, Columbia, MO.

 The information contained herein was obtained from sources deemed to be reliable. MapRight Services makes no warranties or guarantees as to the completeness or accuracy thereof.




|  Boundary 78.3 ac

SOIL CODE	SOIL DESCRIPTION	ACRES	%	CAP
30120	Lagonda silty clay loam, 5 to 9 percent slopes, eroded	67.5	86.23	3e
30085	Grundy silt loam, 2 to 5 percent slopes	10.8	13.77	2e
TOTALS		78.3	100%	2.86

### Capability Legend

Increased Limitations and Hazards

Decreased Adaptability and Freedom of Choice Users

Land, Capability Class(non-irrigated)								
	1	2	3	4	5	6	7	8
'Wild Life'	•	•	•	•	•	•	•	•
Forestry	•	•	•	•	•	•	•	
Limited	•	•	•	•	•	•	•	
Moderate	•	•	•	•	•	•		
Intense	•	•	•	•	•			
Limited	•	•	•	•				
Moderate	•	•	•					
Intense	•	•						
Very Intense	•							

### Grazing Cultivation

- (c) climatic limitations (e) susceptibility to erosion
- (s) soil limitations within the rooting zone (w) excess of water



racine 78  
Missouri, 78 AC +/-




 Boundary

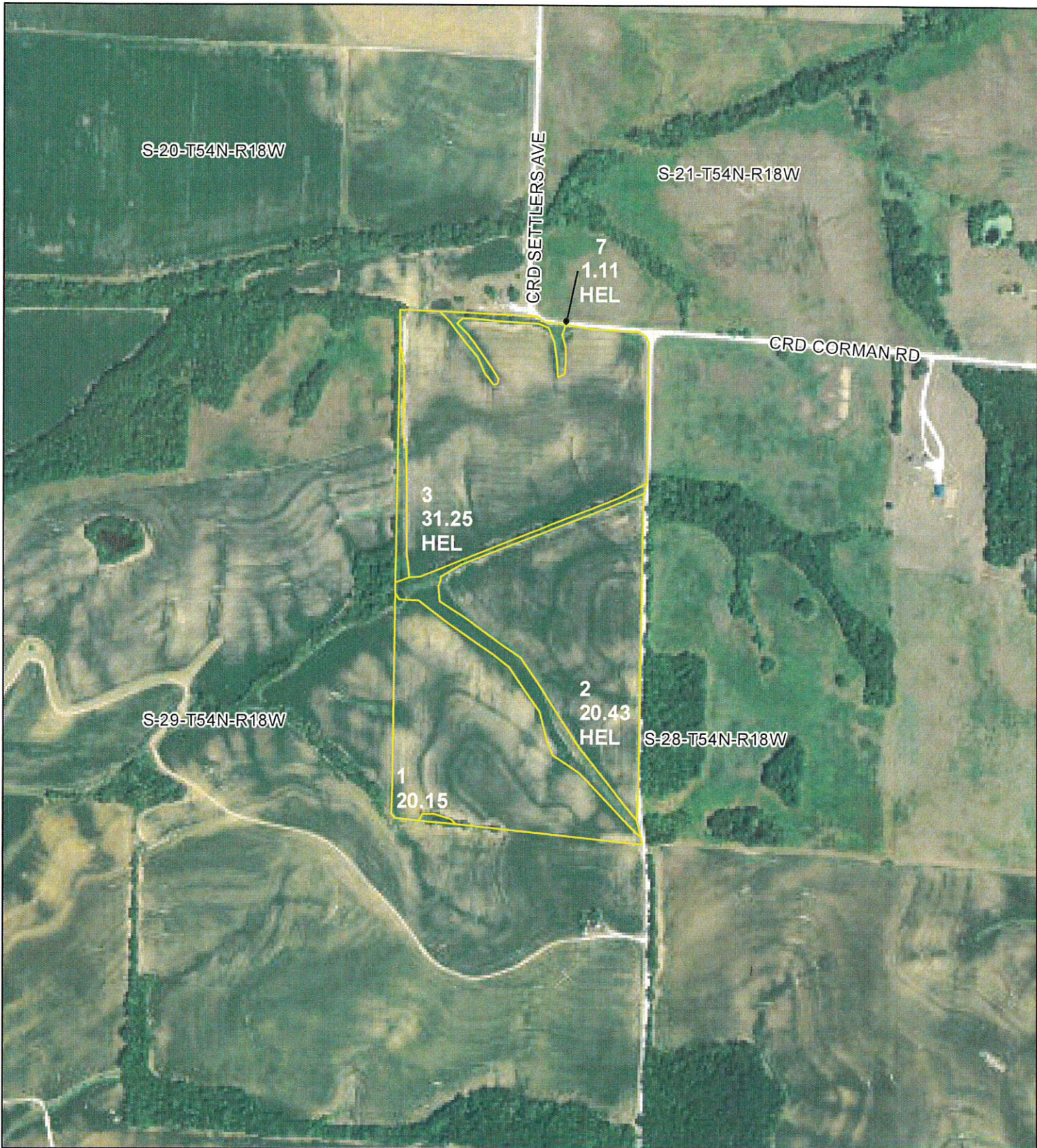
Kurt Hollenberg  
P: 800-895-4430

[www.MissouriLandAndHome.com](http://www.MissouriLandAndHome.com)

3600 I-70 Dr SE, Columbia, MO.

 The information contained herein was obtained from sources deemed to be reliable. MapRight Services makes no warranties or guarantees as to completeness or accuracy thereof.





**All Measurements are  
For FSA Programs Only  
Wetland Determination Identifiers**

- Restricted Use
- ▼ Limited Restrictions
- Exempt from Conservation Compliance Provisions

Disclaimer: Wetland identifiers do not represent the size, shape or specific determination of the area. Refer to your original determination (CPA-026 and attached maps) for exact wetland boundaries and determinations, or contact NRCS.

**Chariton Co. FSA**

- DC = Double Crop
- C = Corn - Yel - GR
- SB = Soybn - Com - GR
- Milo = Sorgh - GRS - GR
- Wht = Wheat - SRW - GR
- Hay = MIXFG - LGM - FG
- P - MIXFG - LGM - GZ
- LS - MIXFG - LGM - LS
- \*Unless notated on Map

1:7,920

**Program Year: 2019**  
Created: 5/14/2019  
Flown: 2016-06-15

- clu
- crp
- plss

**Farm 5813  
Tract 8585**





Missouri  
Chariton

U.S. Department of Agriculture  
Farm Service Agency

**FARM: 5813**  
Prepared: 8/8/19 9:07 AM  
Crop Year: 2019  
Page: 4 of 6

Report ID: FSA-156EZ

**Abbreviated 156 Farm Record**

DISCLAIMER: This is data extracted from the web farm database. Because of potential messaging failures in MIDAS, this data is not guaranteed to be an accurate and complete representation of data contained in the MIDAS system, which is the system of record for Farm Records.

Tract Number: 7674      Description P12/2B S9 16 21 T53N R16W

FSA Physical Location : Chariton, MO      ANSI Physical Location: Chariton, MO

BIA Range Unit Number:

HEL Status: HEL: conservation system is being actively applied

Wetland Status: Wetland determinations not complete

WL Violations: None

Farmland	Cropland	DCP Cropland	WBP	WRP/EWP	CRP Cropland	GRP
40.44	29.23	29.23	0.0	0.0	0.0	0.0
State Conservation	Other Conservation	Effective DCP Cropland	Double Cropped	MPL/FWP		
0.0	0.0	29.23	0.5	0.0		

Crop	Base Acreage	CTAP Tran Yield	PLC Yield	CCC-505 CRP Reduction
WHEAT	4.3		42	0.0
CORN	11.9		106	0.0
SOYBEANS	13.5		31	0.0
<b>Total Base Acres:</b>	29.7			

Owners: RACINE, SUSIE

Other Producers: ENDERLE INC

Tract Number: 8585      Description S20 T54 R18

FSA Physical Location : Chariton, MO      ANSI Physical Location: Chariton, MO

BIA Range Unit Number:

HEL Status: HEL: conservation system is being actively applied

Wetland Status: Wetland determinations not complete

WL Violations: None

Farmland	Cropland	DCP Cropland	WBP	WRP/EWP	CRP Cropland	GRP
78.62	72.94	72.94	0.0	0.0	0.0	0.0
State Conservation	Other Conservation	Effective DCP Cropland	Double Cropped	MPL/FWP		
0.0	0.0	72.94	0.0	0.0		

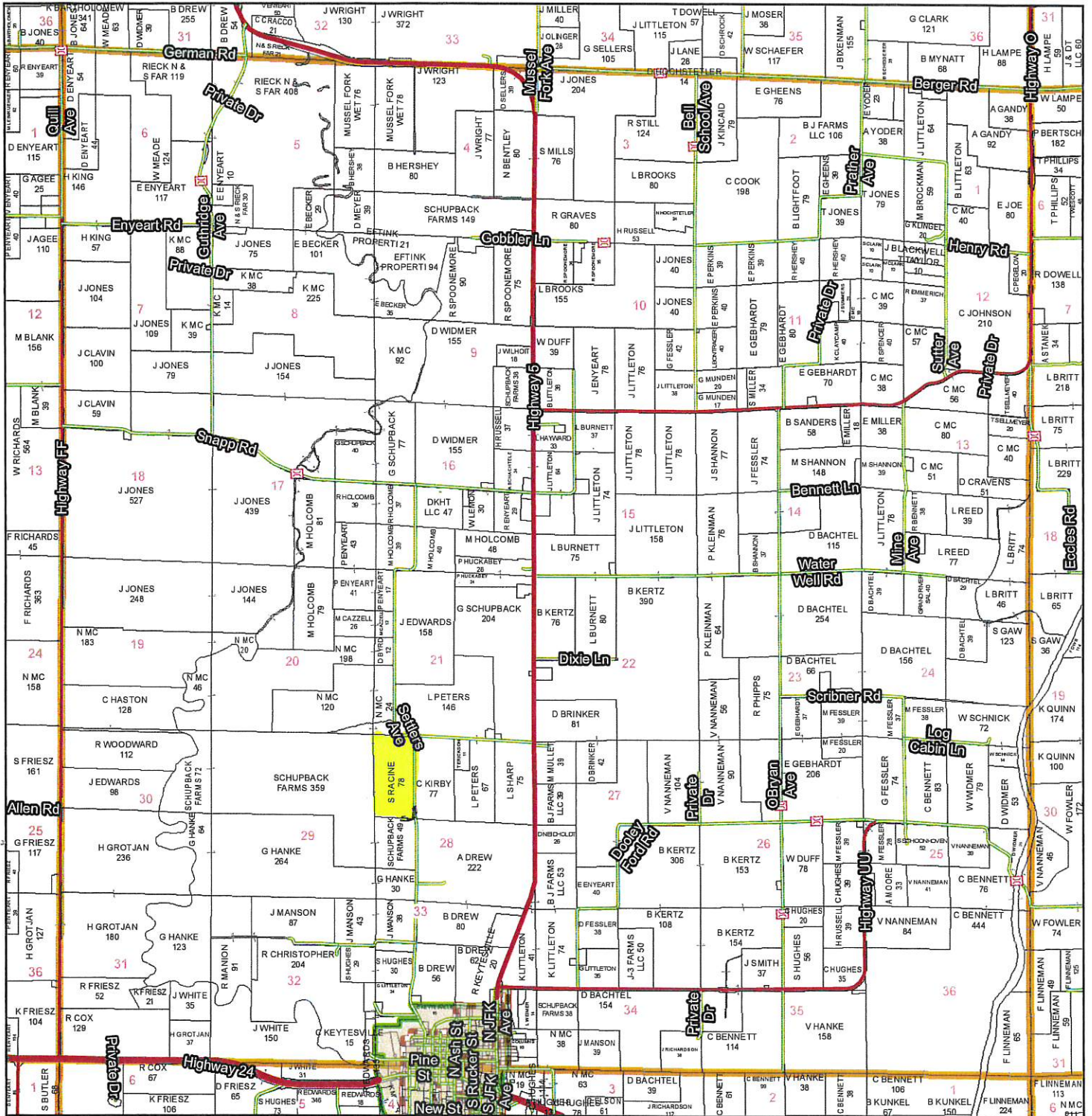
Crop	Base Acreage	CTAP Tran Yield	PLC Yield	CCC-505 CRP Reduction
SOYBEANS	71.9		31	0.0
<b>Total Base Acres:</b>	71.9			

Owners: RACINE, SUSIE

Other Producers: ENDERLE INC

# T54N - R18W

See Page 29



See Page 39

See Page 43

See Page 53

**Chariton County Commission**  
 Tony McCollum - Presiding Commissioner  
 Danny Price - Western District Commissioner  
 Steve Atkinson - Eastern District Commissioner

*This data was primarily developed for tax purposes and is not considered survey accurate.*

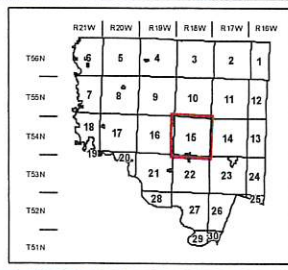
**Data Courtesy Chariton County Geographic Information System**  
 Darrin Gladbach - Assessor

Most parcels > 10 ac labeled

GIS & Map Development By:



© Copyright Chariton County, MO



Legend	
	City Limits
	Township-Range
	Sections
	Land Grant
	Political Township
	Land Ownership
	Subdivisions
	Conservation & US
	US Highways
	ST Highways
	CO Highways
	Rail Roads
	Streams
	Land Hooks
	Bridges