

Hackberry Rd

Knight Creek Rd

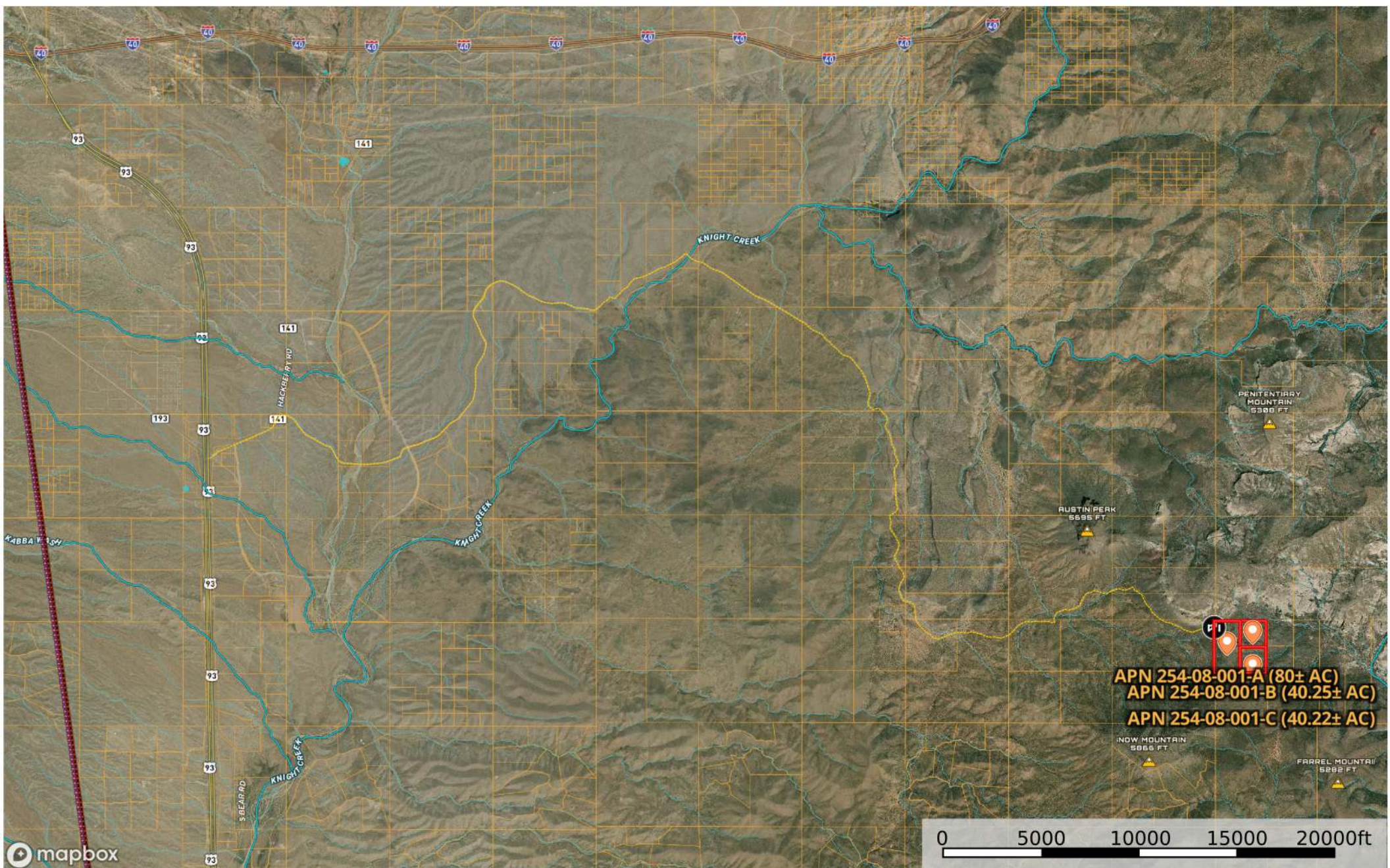
Gate at property
GPS (35.0794, -113.474)

APN 254-08-001-A (80± AC)
APN 254-08-001-B (40.25± AC)
APN 254-08-001-C (40.22± AC)

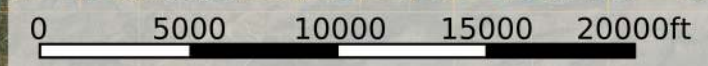
0 5000 10000 15000 20000ft

Richard Menkin (Fort Rock Ranches)

Mohave County, Arizona, 160 AC +/-



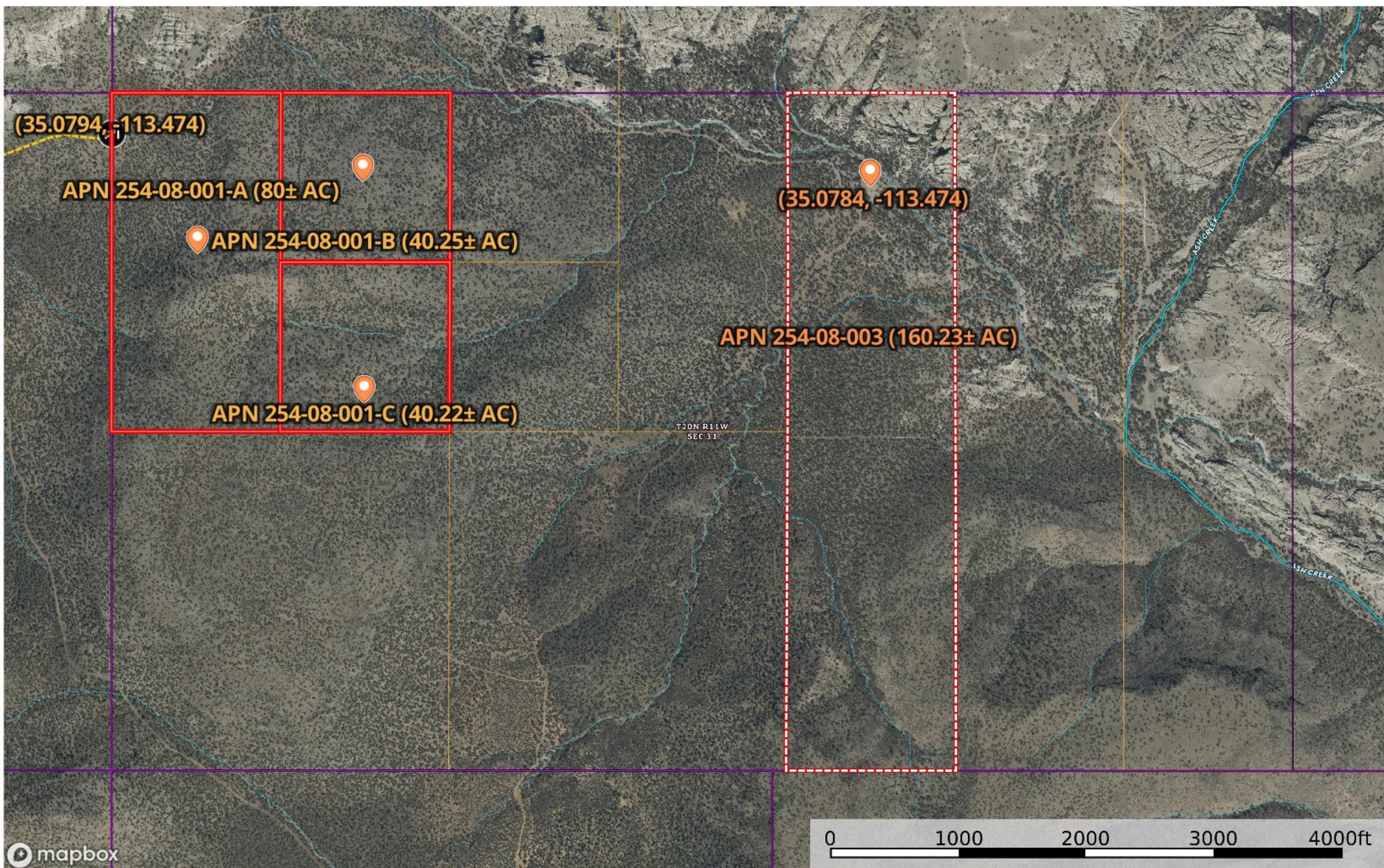
mapbox



- Gate
- Voltage 500 KV
- Voltage 735 KV+
- 40 Acres (254-08-001-A)
- 40 Acres (254-08-001-B)
- 80 Acres (254-08-001-C)
- Road / Trail
- Aerodrome
- Heliport
- Seaport
- Glider Port
- Boundary
- Stream, Intermittent
- Ultra Light
- River/Creek
- Water Body
- Voltage Unavailable
- Voltage 0 - 9 KV
- Voltage 100 161 KV
- Voltage 220 287 KV
- Voltage 345 KV
- Ballon Port

Richard Menkin (Fort Rock Ranches)

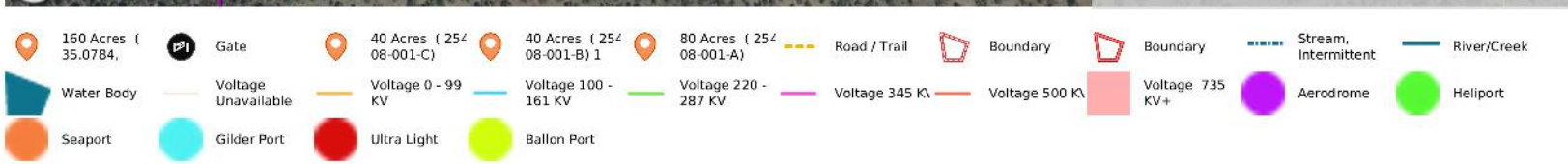
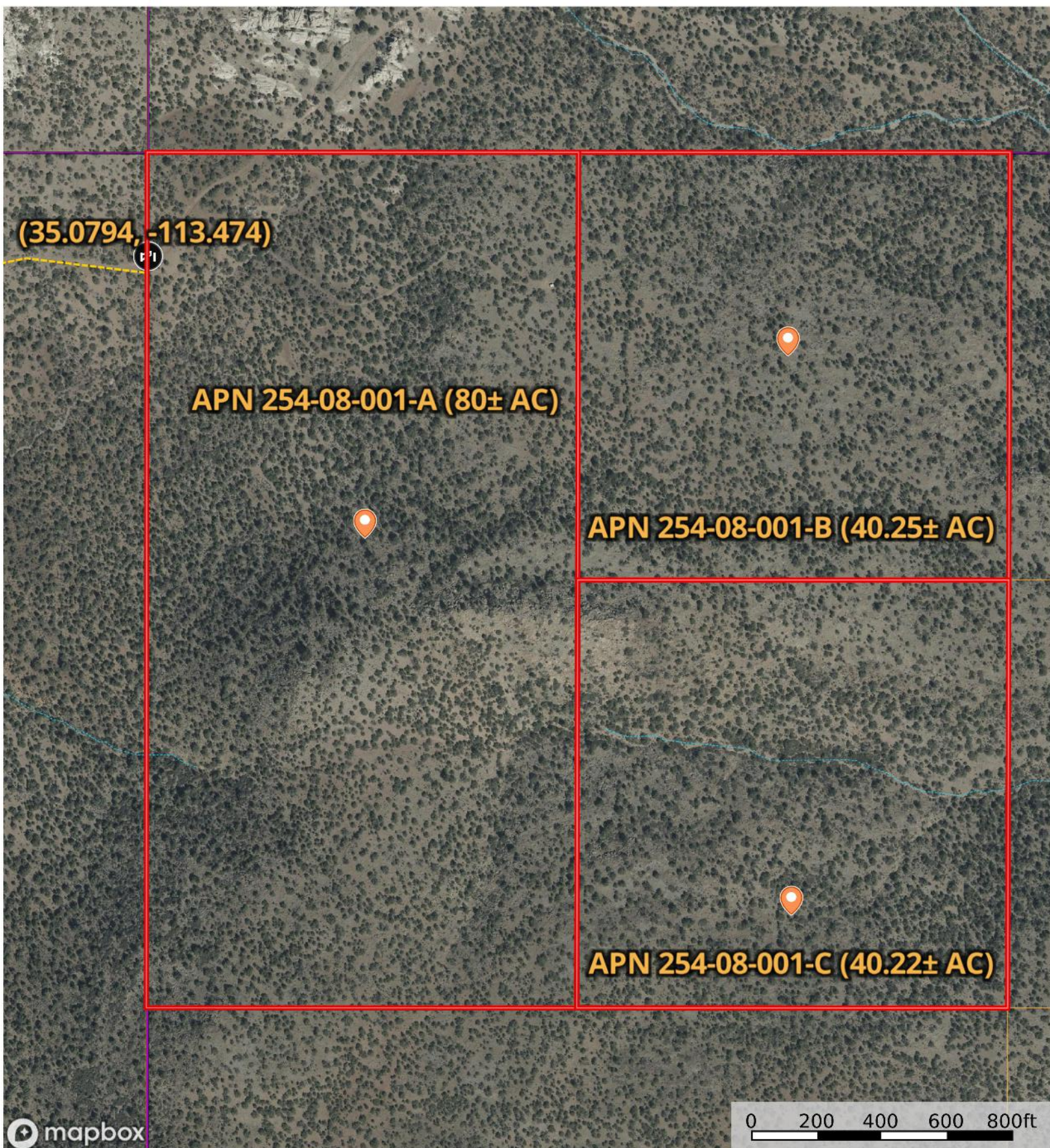
Mohave County, Arizona, 160 AC +/-



- 160 Acres (35.0784,)
- Gate
- 40 Acres (254-08-001-)
- 40 Acres (254-08-001-)
- 80 Acres (254-08-001-)
- Road / Trail
- Boundary
- Boundary
- Stream, Intermittent
- River/Creek
- Water Body
- Voltage Unavailable
- Voltage 0 - 9 KV
- Voltage 100 161 KV
- Voltage 220 287 KV
- Voltage 345 KV
- Voltage 500 KV
- Voltage 735 KV+
- Aerodrome
- Heliport
- Seaport
- Glider Port
- Ultra Light
- Ballon Port

Richard Menkin (Fort Rock Ranches)

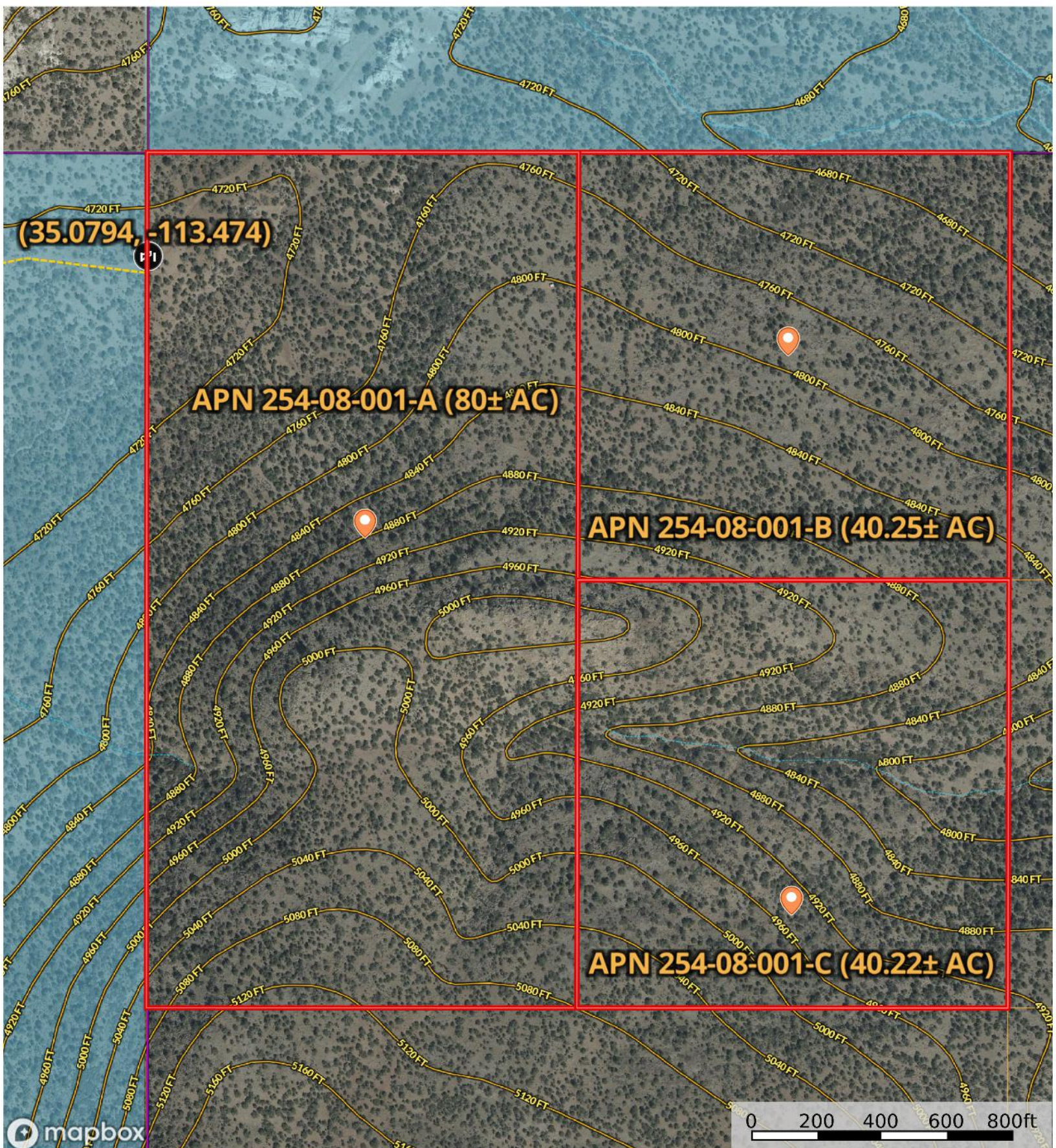
Mohave County, Arizona, 160 AC +/-



The information contained herein was obtained from sources deemed to be reliable. Land id® Services makes no warranties or guarantees as to the completeness or accuracy thereof.

Richard Menkin (Fort Rock Ranches)

Mohave County, Arizona, 160 AC +/-



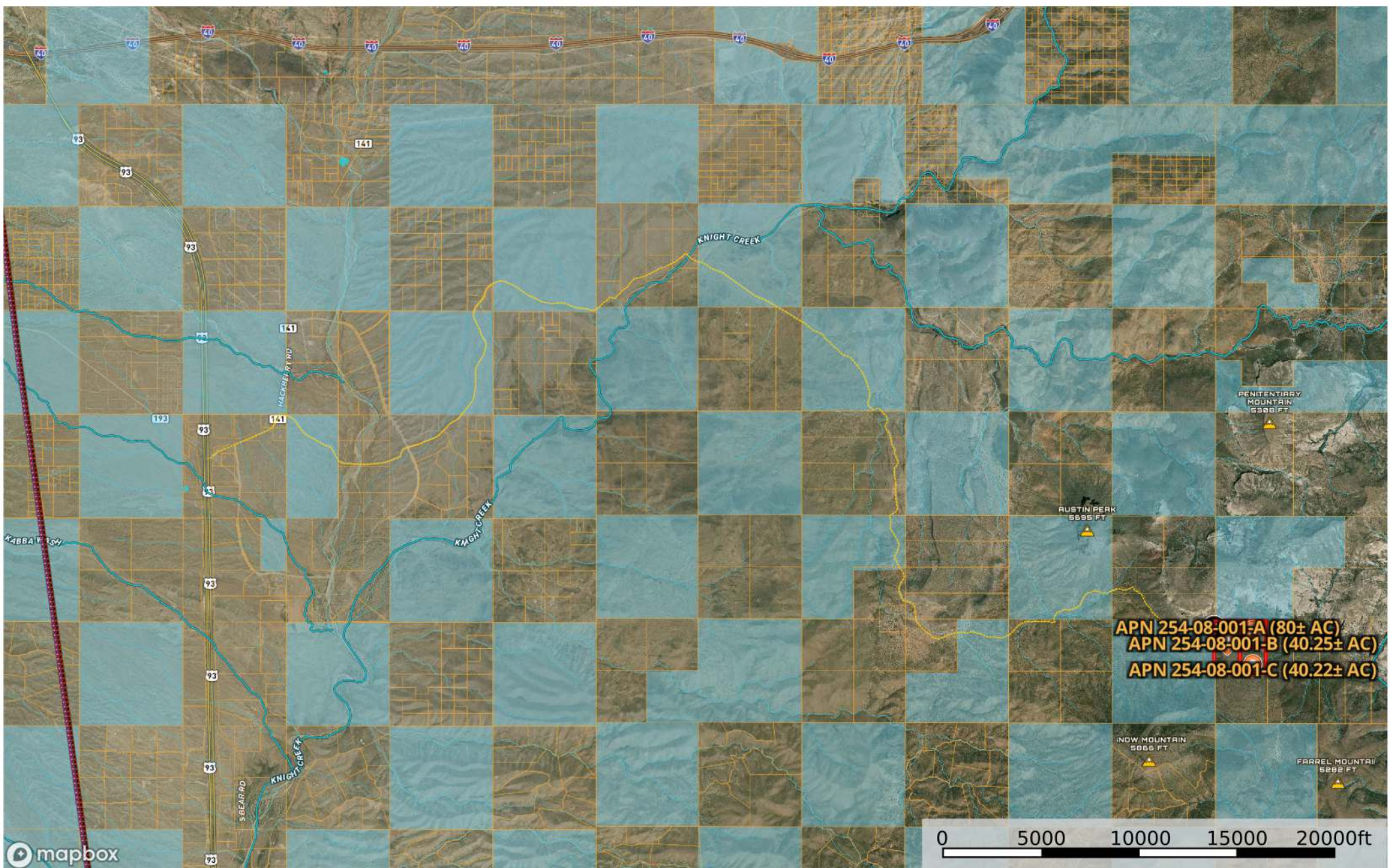
mapbox

- 160 Acres (35.0784)
- 40 Acres (254 08-001-C)
- 40 Acres (254 08-001-B) 1
- 80 Acres (254 08-001-A)
- Road / Trail
- Boundary
- Boundary
- Forest Service
- State Land
- Fish and Wildlife
- National Park
- Other
- BLM
- Local Government
- Voltage Unavailable
- Voltage 0 - 99 KV
- Voltage 100 - 161 KV
- Voltage 220 - 287 KV
- Voltage 345 KV
- Voltage 500 KV
- Voltage 735 KV+
- Aerodrome
- Heliport
- Seaport
- Glider Port
- Ultra Light
- Ballon Port
- Stream, Intermittent
- River/Creek

The information contained herein was obtained from sources deemed to be reliable. Land id® Services makes no warranties or guarantees as to the completeness or accuracy thereof.

Richard Menkin (Fort Rock Ranches)

Mohave County, Arizona, 160 AC +/-



- Gate
- 40 Acres (254-08-001-A)
- 40 Acres (254-08-001-B)
- 80 Acres (254-08-001-C)
- Road / Trail
- Boundary
- Forest Serv
- State Land
- Fish and Wildlife
- National Park
- Other
- BLM
- Local Government
- Stream, Intermittent
- Ballon Port
- Voltage Unavailable
- Voltage 0 - 9 KV
- Voltage 100 161 KV
- Voltage 220 287 KV
- Voltage 345 KV
- Voltage 500 KV
- Voltage 735 KV+
- Aerodrome
- Heliport
- Seaport
- Gilder Port
- Ultra Light

The information contained herein was obtained from sources deemed to be reliable. Land id® Services makes no warranties or guarantees as to the completeness or accuracy thereof.



LOT 1 (80.43± AC)

LOT 2 (40.25± AC)

LOT 3 (40.22± AC)



LOT 1 (80.43± AC)

LOT 2 (40.25± AC)

LOT 3 (40.22± AC)



Ash Creek

Campos
Water Spring

LOT 2 (40.25± AC)

LOT 1 (80.43± AC)

LOT 3 (40.22± AC)



Campos
Water Spring

Ash Creek

LOT 2 (40.25± AC)

LOT 3 (40.22± AC)

LOT 1 (80.43± AC)



LOT 2 (40.25± AC)

LOT 3 (40.22± AC)

LOT 1 (80.43± AC)

Ash Creek

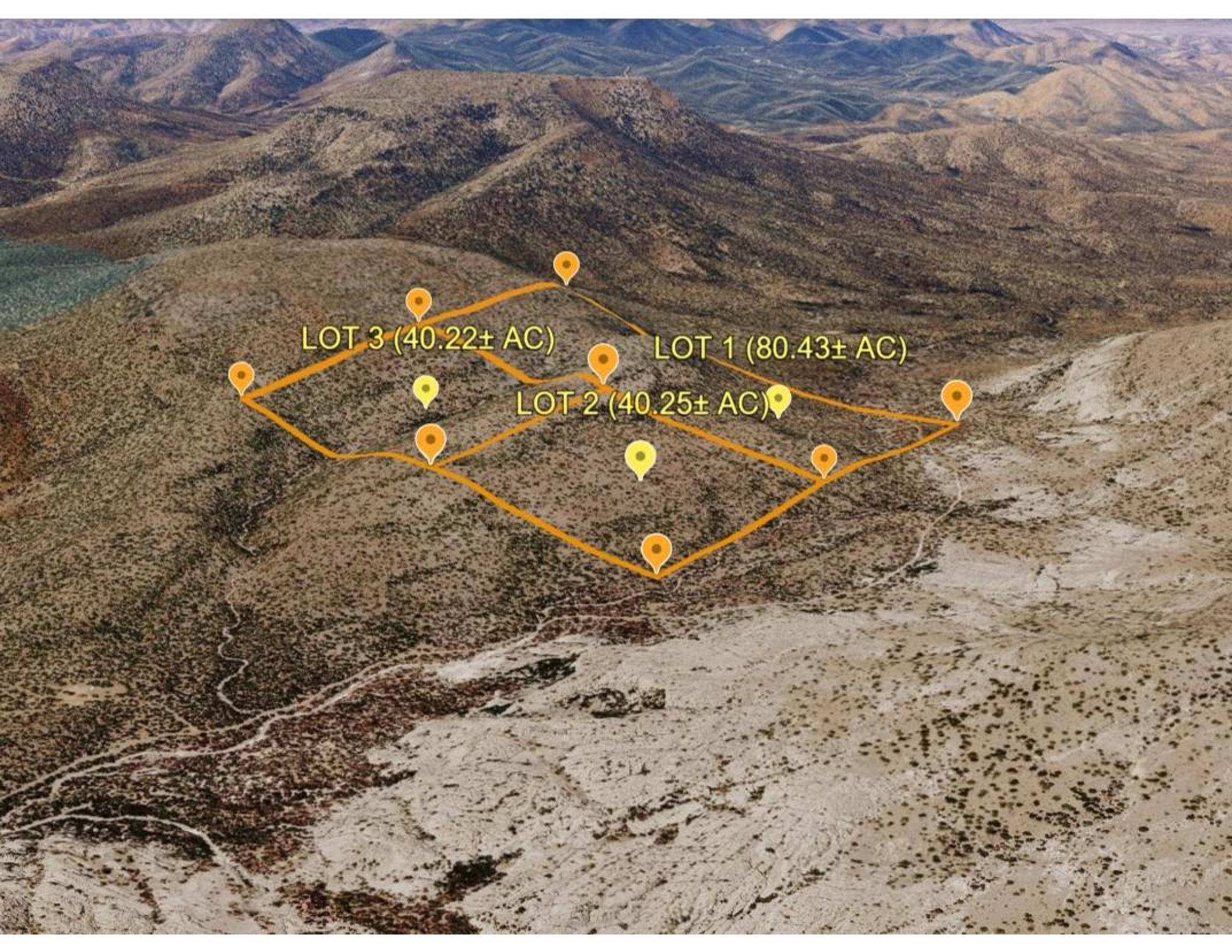
Campos Water Spring



LOT 3 (40.22± AC)

LOT 2 (40.25± AC)

LOT 1 (80.43± AC)



LOT 3 (40.22± AC)

LOT 1 (80.43± AC)

LOT 2 (40.25± AC)

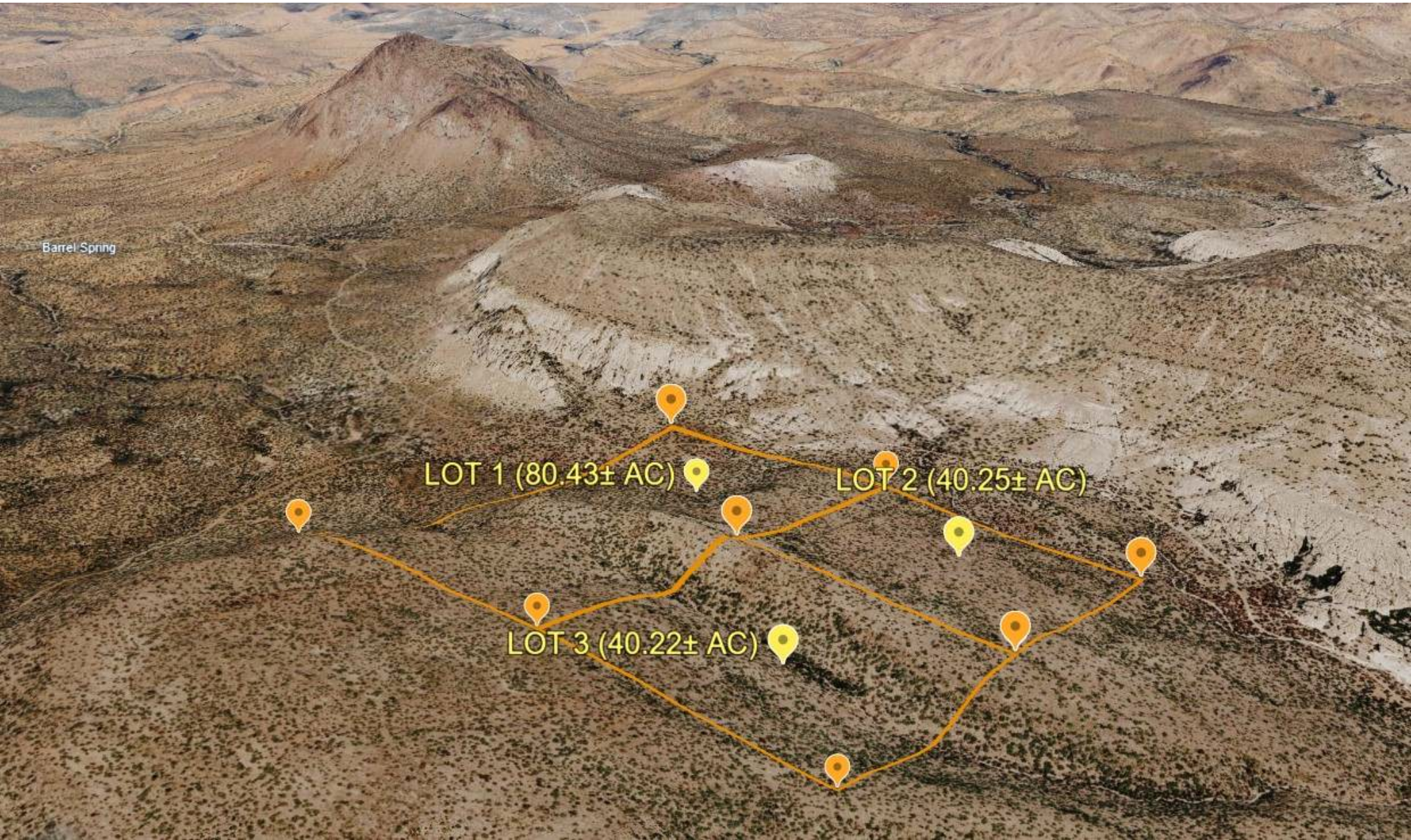


Barrel Spring

LOT 1 (80.43± AC)

LOT 2 (40.25± AC)

LOT 3 (40.22± AC)





LOT 1 (80.43± AC)

LOT 2 (40.25± AC)

LOT 3 (40.22± AC)