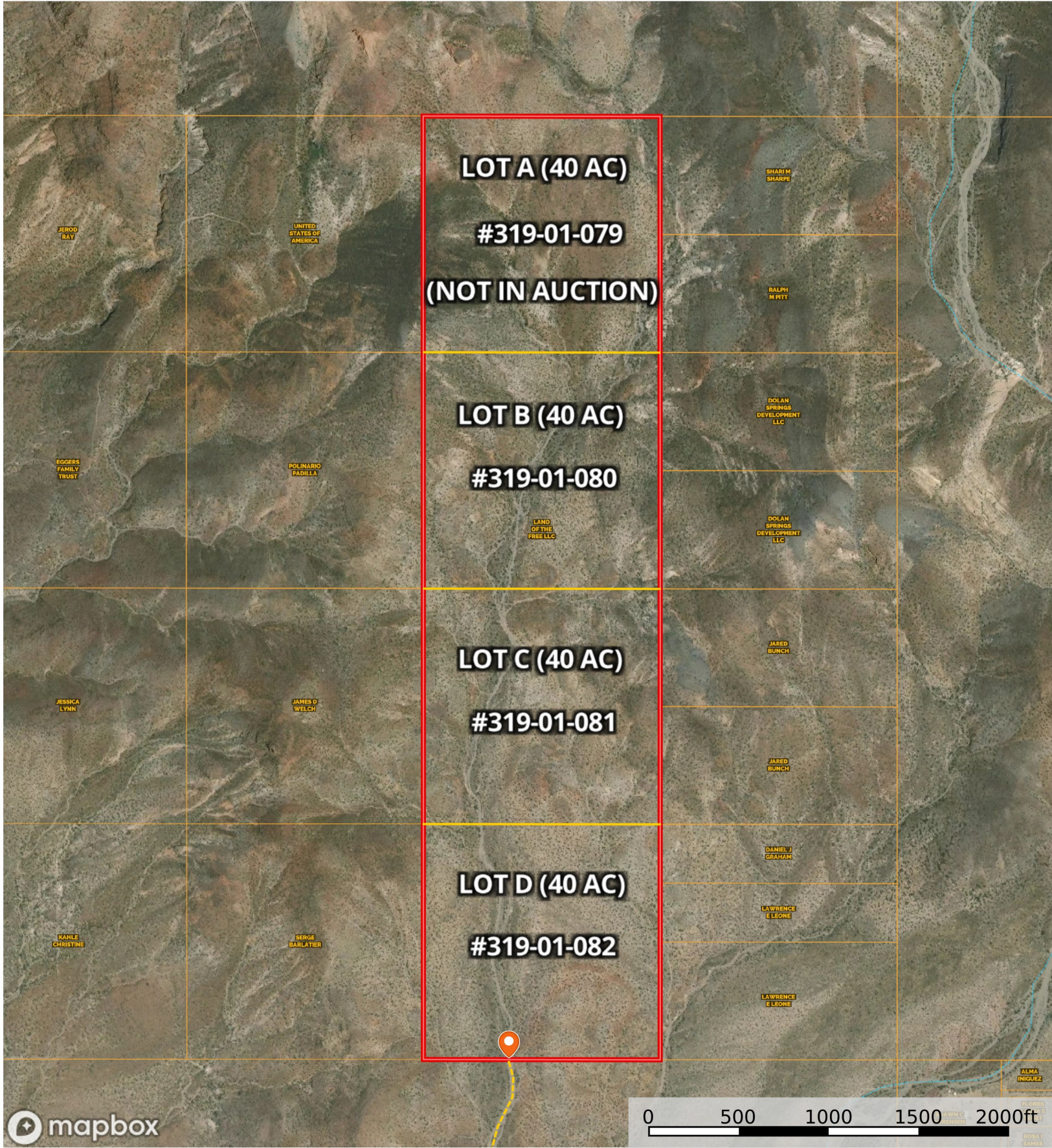


Dolan Springs Land (3 - 40-acre parcels, Mohave County)
Mohave County, Arizona, 120 AC +/-



160 Acres

Primary Road

Road / Trail

Boundary

Stream, Intermittent

River/Creek

Water Body

Aerodrome

Heliport

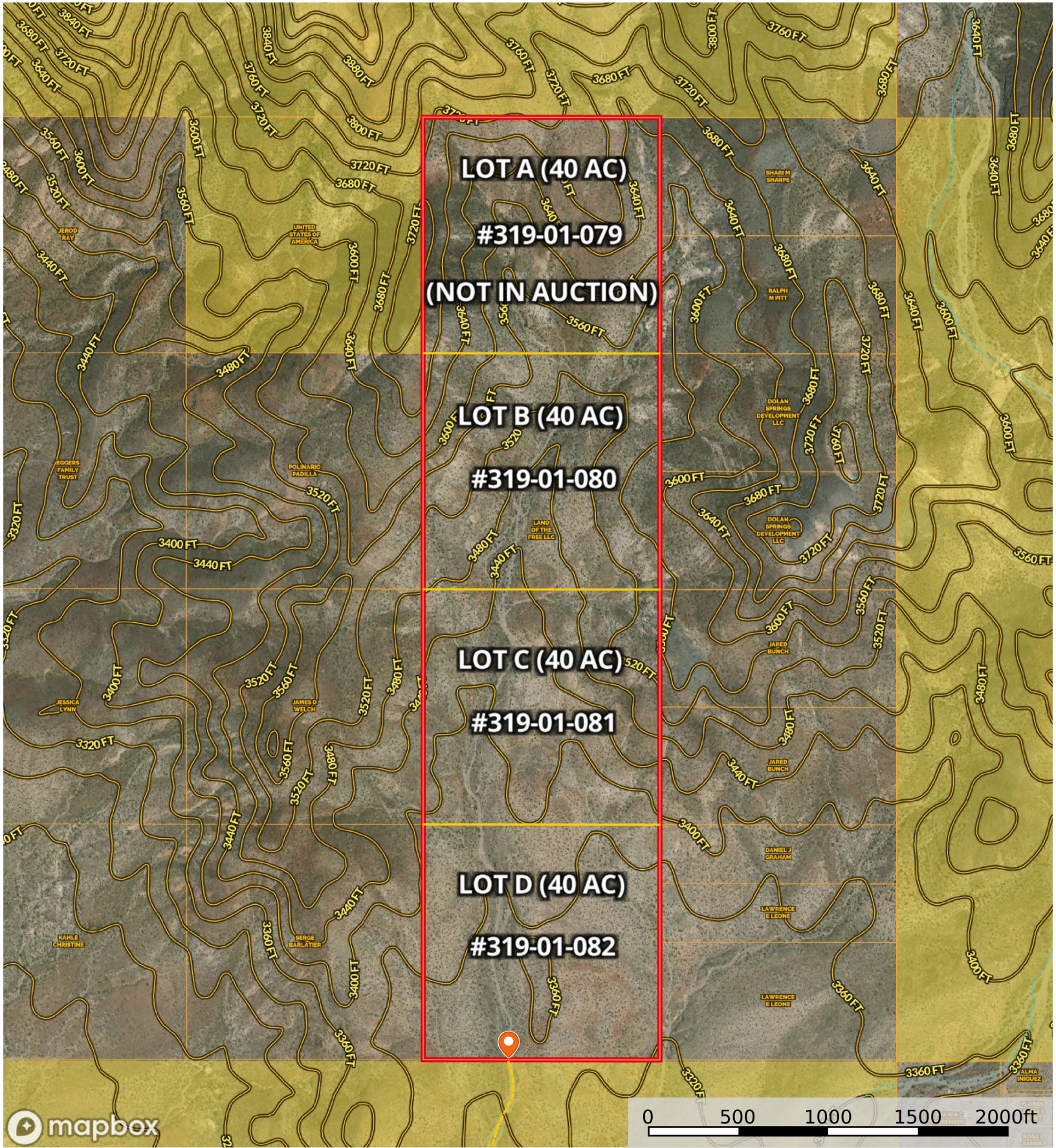
Seaport

Glider Port

Ultra Light

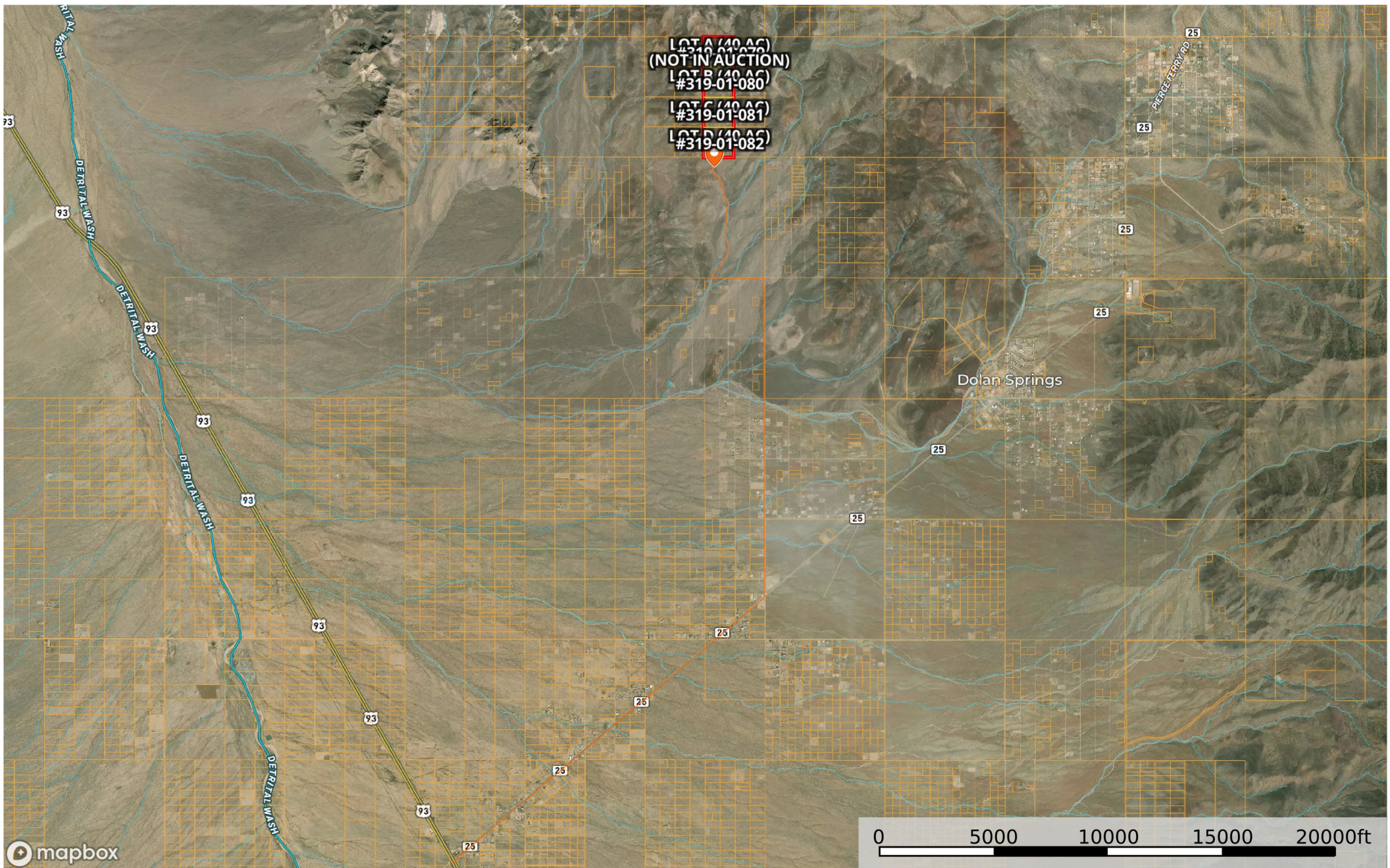
Ballon Port

Dolan Springs Land (3- 40-acre parcels, Mohave County)
Mohave County, Arizona, 120 AC +/-



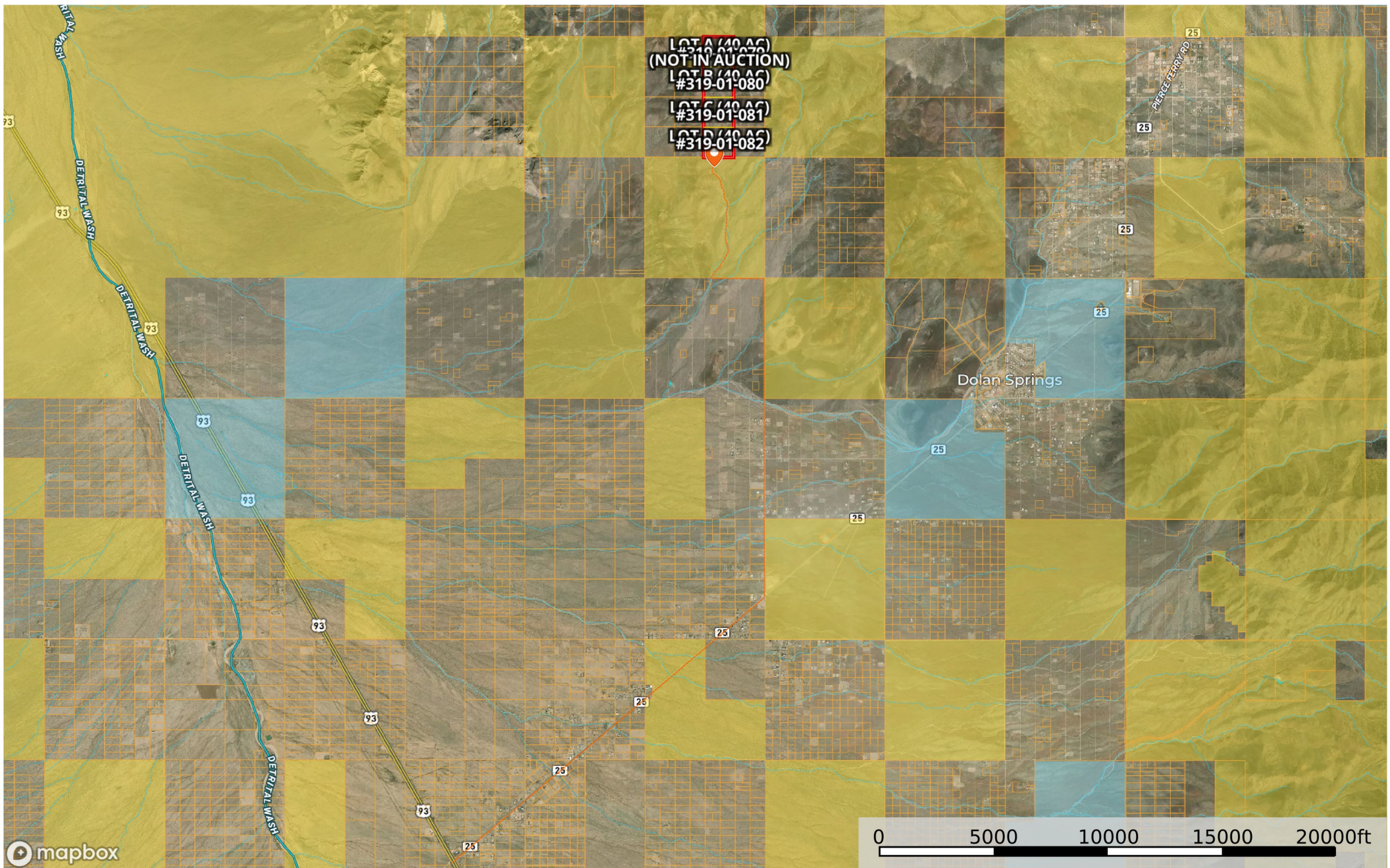
- 160 Acres Primary Road Road / Trail Boundary Forest Service State Land Fish and Wildlife National Park Other BLM
- Local Government Aerodrome Heliport Seaport Glider Port Ultra Light Ballon Port Stream, Intermittent River/Creek Water Body

Dolan Springs Land (3 - 40-acre parcels, Mohave County)
Mohave County, Arizona, 120 AC +/-



- 160 Acres
- Primary Road
- Road / Trail 1 1
- Boundary
- Stream, Intermittent
- River/Creek
- Water Body
- Aerodrome
- Heliport
- Seaport
- Glider Port
- Ultra Light
- Ballon Port

Dolan Springs Land (3 - 40-acre parcels, Mohave County)
Mohave County, Arizona, 120 AC +/-



- 160 Acres
- Primary Road
- Road / Trail 1
- Boundary
- Forest Service
- State Land
- Fish and Wildlife
- National Park
- Other
- BLM
- Local Government
- Stream, Intermittent
- River/Creek
- Water Body
- Aerodrome
- Heliport
- Seaport
- Glider Port
- Ultra Light
- Ballon Port