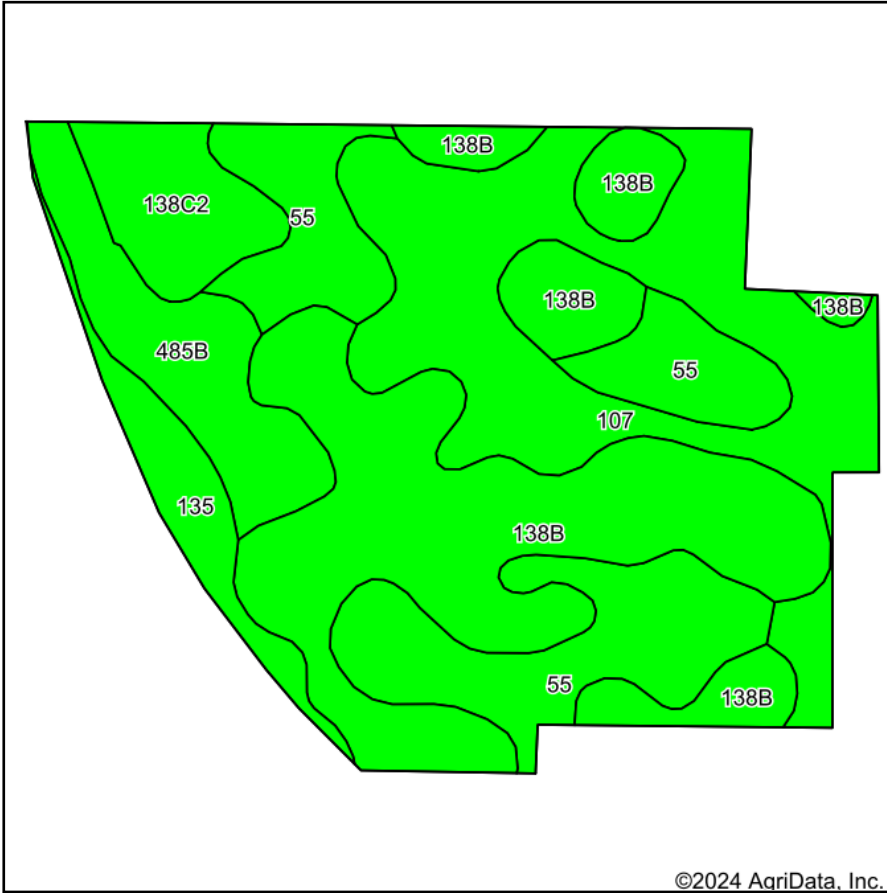
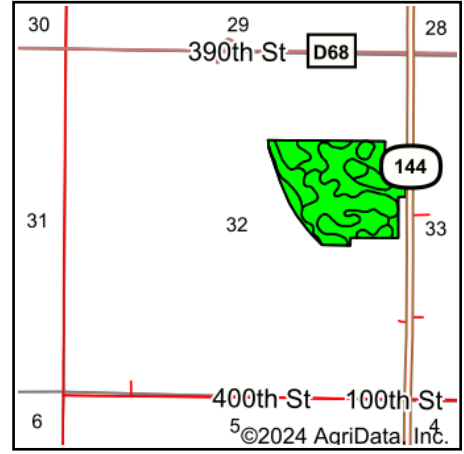


Soils Map



Soils data provided by USDA and NRCS.



State: **Iowa**
 County: **Webster**
 Location: **32-86N-29W**
 Township: **Lost Grove**
 Acres: **59.33**
 Date: **9/30/2024**

Hawkeye Farm Mgmt & Real Estate



22 N Main, Albion IA Phone: 641-932-7796
 Email: hawkeye@uciowa.com
 On the web: www.uciowa.com
 www.iowawhitehillfarms.com

Maps Provided By:



© AgriData, Inc. 2023

www.AgriDataInc.com



Area Symbol: IA187, Soil Area Version: 40

Code	Soil Description	Acres	Percent of field	CSR2 Legend	Non-Irr Class *c	CSR2**	CSR	*n NCCPI Corn	*n NCCPI Soybeans	
138B	Clarion loam, 2 to 6 percent slopes	20.86	35.2%		Ile	89	82	78	83	
107	Webster clay loam, 0 to 2 percent slopes	14.91	25.1%		IIw	86	82	78	82	
55	Nicollet clay loam, 1 to 3 percent slopes	12.21	20.6%		Iw	89	90	81	81	
485B	Spillville loam, 2 to 5 percent slopes	5.24	8.8%		Ile	88	82	87	87	
138C2	Clarion loam, 6 to 10 percent slopes, moderately eroded	3.38	5.7%		IIIe	83	65	68	70	
135	Coland clay loam, 0 to 2 percent slopes, occasionally flooded	2.73	4.6%		IIw	76	82	70	83	
Weighted Average						1.85	87.2	82.7	*n 78.5	*n 81.9

**IA has updated the CSR values for each county to CSR2.

*n: The aggregation method is "Weighted Average using all components"

*c: Using Capabilities Class Dominant Condition Aggregation Method