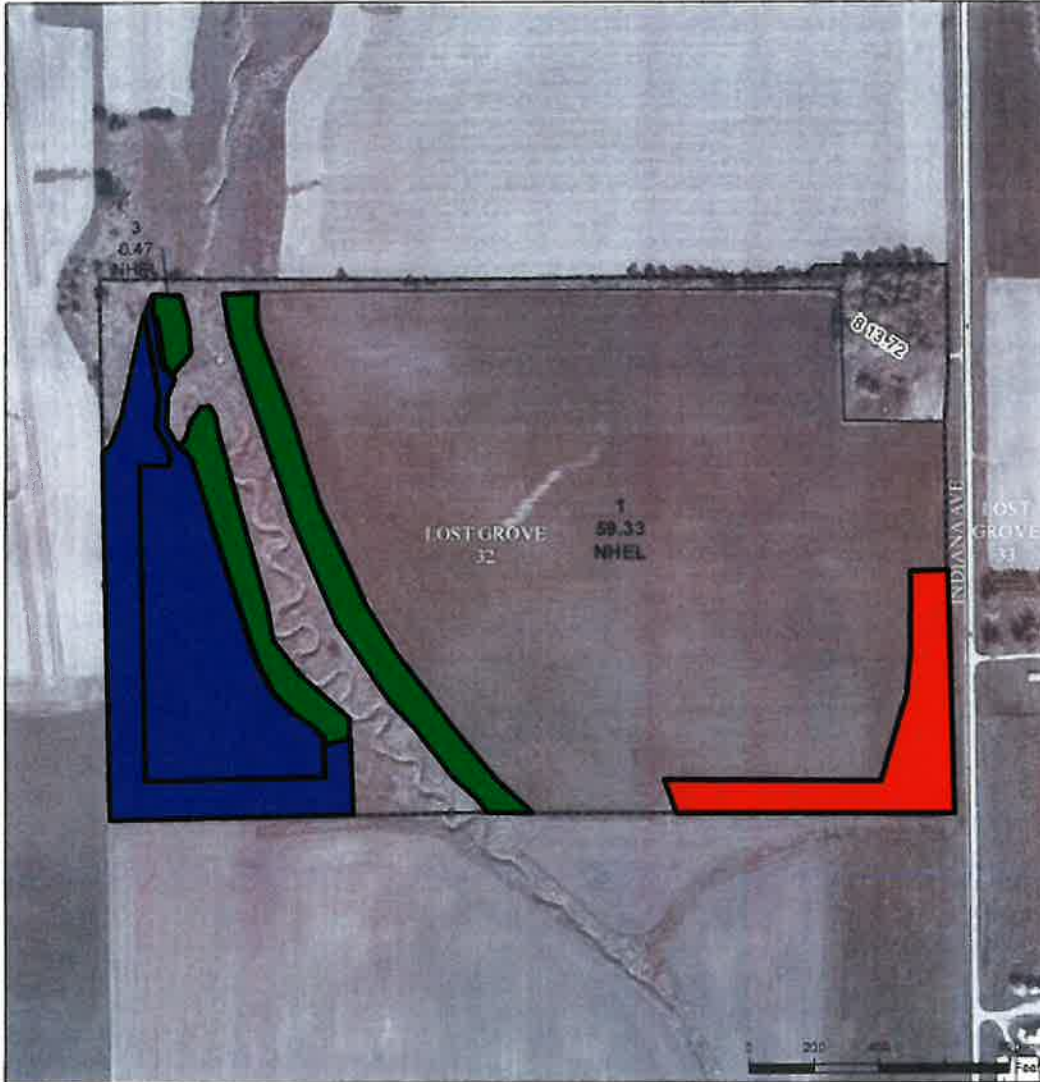




**Hawkeye
Farm Mgmt &
Real Estate**

**Color Coded CRP Map
Webster County 97 +/- Acres**

USDA United States Department of Agriculture
Webster County, Iowa



Legend
 Non-Cropland CRP Iowa PWS
 Contend Tract Boundary Iowa Forests
Wetland Determination Identifiers
 Restricted Use
 Limited Restrictions
 Exempt from Conservation Compliance Provisions

2024 Program Year
Map Created April 17, 2024

**Farm 1540
Tract 68**

Tract Cropland Total: 83.91 acres

Contract	# of Acres	Rate/Acre	Annual Income	Contract Thru Date
Red	4.10	\$175.00	\$718.00	9-30-2035
Blue	13.43	\$333.94	\$4,485.00	9-30-2026
Green	7.05	\$217.00	\$1,530.00	9-30-2029
24.58 Total CRP Acres			\$6,733.00 Annual CRP Income	

The above information, although believed to be accurate, is not warranted or guaranteed by the owner, listing firm, or listing agent.