

DESCRIPTION:  
 THE WEST 1/4 OF THE SE 1/4 OF THE SE 1/4 OF SECTION 18, TOWNSHIP 17 SOUTH, RANGE 23 EAST, MARION COUNTY, FLORIDA, THENCE SOUTH WITH THE WESTERLY LINE OF THE DESCRIBED LANDS 155 FEET TO A METAL PIPE DRIVEN IN SAID LINE; THENCE EASTERLY 660.00 FEET ALONG A PARALLEL LINE WITH THE NORTHERLY LINE OF SAID DESCRIBED LANDS TO A CEMENT MARKER; THENCE NORTH 150 FEET TO A CEMENT MARKER AT THE NORTHEAST CORNER OF THE NW 1/4 OF THE SE 1/4 OF SECTION 18, TOWNSHIP 17 SOUTH, RANGE 23 EAST, MARION COUNTY, FLORIDA; THENCE WEST ALONG THE NORTHERLY LINE OF SAID LAND TO THE POINT OF BEGINNING.  
 AND EXCEPT ANY PORTION LING WITHIN STATE ROAD RIGHT OF WAY.

NOTES:  
 1) BEARING BASED ON THE EAST BOUNDARY LINE OF LOT, BEARING BEING S00°07'32"E.

- 2) SURVEY BASED ON EXISTING MONUMENTATION OF SUBDIVISION.
- 3) DESCRIPTION AS PER O.R. BOOK 6832, PAGES 170-172, PUBLIC RECORDS OF MARION COUNTY, FLORIDA.
- 4) BOUNDARY SURVEY FOR ROBERT BLANCHARD.
- 5) LANDS SHOWN HEREON HAVE NOT BEEN ABSTRACTED FOR RIGHT-OF-WAY, EASEMENTS AND/OR OTHER INSTRUMENTS OF RECORD.
- 6) UNDERGROUND AND OVERHEAD IMPROVEMENTS, IF ANY, WERE NOT LOCATED.
- 7) LANDS SHOWN HEREON ARE NOT SUBJECT TO THE FLOOD PRONE AREA AS ESTABLISHED BY THE NATIONAL FLOOD INSURANCE PROGRAM, COMMUNITY PANEL NUMBER 12083C 0745 D, DATED AUGUST 28, 2008, AND IS CONSIDERED TO BE IN ZONE "X," HOWEVER ACCORDING TO MARION COUNTY ENGINEERING DEPARTMENT THIS PARCEL IS IN A FLOOD ZONE, ACCORDING TO MARION COUNTY INTERACTIVE MAP B.F.E. IS 832, IN THE MARSHALL SWAMP. ALL PROPOSED IMPROVEMENTS OF THIS SURVEY ARE NOT VALID UNLESS SIGNED & SEALED WITH AN EMBOSSED SURVEYORS SEAL.
- 8) REPRODUCTIONS OF THIS SURVEY ARE NOT VALID UNLESS SIGNED & SEALED WITH AN EMBOSSED SURVEYORS SEAL.
- 9) THE ACCURACY OF THE SURVEY MEASUREMENTS USED FOR THIS SURVEY HAS BEEN DETERMINED TO BE WITHIN THE TOLERANCES SET FORTH IN THE PRACTICES NAMED HEREON, AND SHALL NOT BE DILIGENTLY OR RELIED UPON BY ANY OTHER INDIVIDUAL OR ENTITY WITHOUT AUTHORIZATION FROM ARDURRA GROUP, INC.
- 11) FENCES, SYMBOLS, MONUMENTATION, AND UTILITIES SHOWN HEREON MAY BE EXAGGERATED FOR PICTORIAL PURPOSES AND MAY NOT BE SHOWN TO SCALE.
- 12) ELEVATIONS AND STATE PLANE COORDINATES ARE BASED ON THE GPS RTK NETWORK DATUM FROM F.D.O.T. DATABASE AND HAVE BEEN ESTABLISHED ON THIS SITE BY RTK GPS. THE VERTICAL DATUM IS BASED ON NAVD-88 DATUM AND THE HORIZONTAL DATUM IS BASED ON NAD 83 (2011 ADJUSTMENT), FLORIDA ZONE WEST (902).
- 13) THIS PARCEL MAY BE SUBJECT TO A F.D.O.T. DRAINAGE EASEMENT AS PER O.R. BOOK 509, PAGE 194. IT ALSO MAY BE SUBJECT TO THE EXCEPTIONS FOR THE WATER RETENTION AREA (FOND NO. 4) AS SHOWN ON THE F.D.O.T. RIGHT OF WAY MAP, SECTION NO. 36050, DATED 12-19-08.

LEGEND:


- ▣ FOUND 4" X 4" CONCRETE MONUMENT (NO ID)
- FOUND 4" X 4" CONCRETE MONUMENT (MARION)
- FOUND 8" OCTAGON (NO ID)
- FOUND 5/8" IRON ROD & CAP (#5058)
- FOUND 5/8" IRON ROD & CAP (#5058)
- FOUND 5/8" IRON ROD & CAP (#5058)
- FOUND NAIL & TAB IN PAVEMENT (#8246)
- DEGREES WHEN USED IN A BEARING AND/OR ANGLE
- MINUTES WHEN USED IN A BEARING AND/OR ANGLE
- ° SECONDS WHEN USED IN A BEARING AND/OR ANGLE
- FEET WHEN USED IN A DISTANCE
- RIGHT OF WAY
- CENTERLINE
- CONC.
- MASONRY
- DISTANCE OR BEARING
- PLAT MEASUREMENT
- △ CENTRAL ANGLE OF CURVE
- △ RADIUS OF CURVE
- △ ARC LENGTH OF CURVE
- △ TANGENT OF CURVE
- △ POINT OF TANGENCY
- △ POINT OF BEGINNING
- △ POINT OF REVERSE CURVATURE
- △ P.O.B.
- △ POINT OF COMMENCEMENT
- △ TEMPORARY BENCHMARK
- △ DRAINAGE & UTILITY EASEMENT
- △ FINISHED FLOOR ELEVATION
- △ IRON ROD & CAP
- △ CONC. MONUMENT
- △ B.S.
- △ BUILDING SETBACK
- △ ELEVATION
- △ NAIL & TAB
- △ DRAINAGE FLOW

CERTIFIED TO:  
 1) ROBERT BLANCHARD

I HEREBY CERTIFY THAT THIS SURVEY WAS MADE UNDER MY RESPONSIBLE DIRECTION AND SUPERVISION, AND THE PLAT AND DESCRIPTION ABOVE IS A CORRECT REPRESENTATION OF THE LAND SURVEYED AND MEETS THE ESTABLISHED STANDARDS OF PRACTICE SET FORTH BY THE FLORIDA BOARD OF PROFESSIONAL LAND SURVEYORS IN CHAPTER S1-17, FLORIDA ADMINISTRATIVE CODE, PUNSUANT TO SECTION 472.027, FLORIDA STATUTES.

GARY L. WILLAM P.S.M. #5058 LB. #2610  
 ARDURRA GROUP, INC.  
 OCALA SURVEY DIVISION  
 2182 N.E. 2ND STREET  
 OCALA, FLORIDA 34470  
 (352) 622-7224

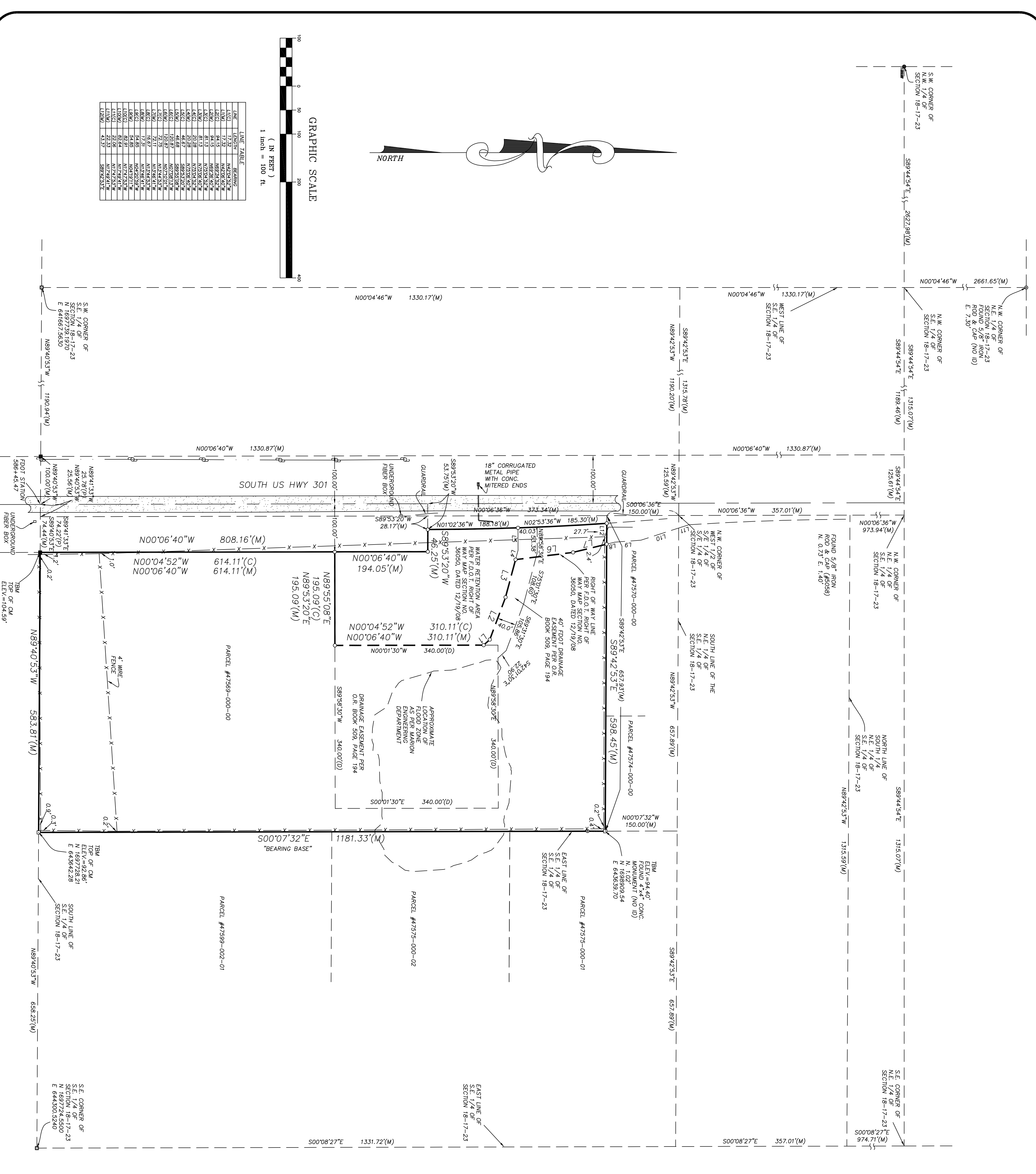
SHEET NO.			
1 of 1			
NO.	BY	DATE	REVISION

  
**ARDURRA**  
 COLLABORATE. INNOVATE. CREATE

OCALA SURVEY DIVISION  
 2182 N.E. 2nd STREET  
 OCALA, FLORIDA 34470  
 (352) 622-7224  
 OFFICE@MILAMLS.COM

PROJECT NAME  
**BOUNDARY SURVEY FOR:  
 ROBERT BLANCHARD**

DRAWN BY:	JJH	DATE:	11/8/22
CHECKED BY:	GM	BOOK NO.:	235/04
JOB NO.:	22-1639		



LINE	LENGTH	BEARING
L100	17.32	N42°02'52"W
L101	44.15	N89°43'52"W
L102	11.15	N89°43'52"W
L103	61.15	N89°43'52"W
L104	61.15	N89°43'52"W
L105	20.28	N72°02'40"W
L106	46.87	S89°53'20"W
L107	120.87	N02°06'40"W
L108	120.87	N02°06'40"W
L109	120.87	N02°06'40"W
L110	120.87	N02°06'40"W
L111	120.87	N02°06'40"W
L112	120.87	N02°06'40"W
L113	120.87	N02°06'40"W
L114	120.87	N02°06'40"W
L115	120.87	N02°06'40"W
L116	120.87	N02°06'40"W
L117	120.87	N02°06'40"W
L118	120.87	N02°06'40"W
L119	120.87	N02°06'40"W
L120	120.87	N02°06'40"W
L121	120.87	N02°06'40"W
L122	120.87	N02°06'40"W
L123	120.87	N02°06'40"W
L124	120.87	N02°06'40"W
L125	120.87	N02°06'40"W
L126	120.87	N02°06'40"W
L127	120.87	N02°06'40"W
L128	120.87	N02°06'40"W
L129	120.87	N02°06'40"W
L130	120.87	N02°06'40"W
L131	120.87	N02°06'40"W
L132	120.87	N02°06'40"W
L133	120.87	N02°06'40"W
L134	120.87	N02°06'40"W
L135	120.87	N02°06'40"W
L136	120.87	N02°06'40"W
L137	120.87	N02°06'40"W
L138	120.87	N02°06'40"W
L139	120.87	N02°06'40"W
L140	120.87	N02°06'40"W
L141	120.87	N02°06'40"W
L142	120.87	N02°06'40"W
L143	120.87	N02°06'40"W
L144	120.87	N02°06'40"W
L145	120.87	N02°06'40"W
L146	120.87	N02°06'40"W
L147	120.87	N02°06'40"W
L148	120.87	N02°06'40"W
L149	120.87	N02°06'40"W
L150	120.87	N02°06'40"W
L151	120.87	N02°06'40"W
L152	120.87	N02°06'40"W
L153	120.87	N02°06'40"W
L154	120.87	N02°06'40"W
L155	120.87	N02°06'40"W
L156	120.87	N02°06'40"W
L157	120.87	N02°06'40"W
L158	120.87	N02°06'40"W
L159	120.87	N02°06'40"W
L160	120.87	N02°06'40"W
L161	120.87	N02°06'40"W
L162	120.87	N02°06'40"W
L163	120.87	N02°06'40"W
L164	120.87	N02°06'40"W
L165	120.87	N02°06'40"W
L166	120.87	N02°06'40"W
L167	120.87	N02°06'40"W
L168	120.87	N02°06'40"W
L169	120.87	N02°06'40"W
L170	120.87	N02°06'40"W
L171	120.87	N02°06'40"W
L172	120.87	N02°06'40"W
L173	120.87	N02°06'40"W
L174	120.87	N02°06'40"W
L175	120.87	N02°06'40"W
L176	120.87	N02°06'40"W
L177	120.87	N02°06'40"W
L178	120.87	N02°06'40"W
L179	120.87	N02°06'40"W
L180	120.87	N02°06'40"W
L181	120.87	N02°06'40"W
L182	120.87	N02°06'40"W
L183	120.87	N02°06'40"W
L184	120.87	N02°06'40"W
L185	120.87	N02°06'40"W
L186	120.87	N02°06'40"W
L187	120.87	N02°06'40"W
L188	120.87	N02°06'40"W
L189	120.87	N02°06'40"W
L190	120.87	N02°06'40"W
L191	120.87	N02°06'40"W
L192	120.87	N02°06'40"W
L193	120.87	N02°06'40"W
L194	120.87	N02°06'40"W
L195	120.87	N02°06'40"W
L196	120.87	N02°06'40"W
L197	120.87	N02°06'40"W
L198	120.87	N02°06'40"W
L199	120.87	N02°06'40"W
L200	120.87	N02°06'40"W