

JANICEK'S IRON WHEEL RANCH AUCTION



1950 Dodge Power Wagon



1928 Hart Parr 18-36



1928 John Deere D



1926 McCormick Deering 10-20



1958 MM GB



1927 Fordson Model F



1934 Caterpillar Model 28



1955 Studebaker



1936 McCormick Deering Farmall F12



1928 Twin City 17-28



1948 MM Universal ZTU



1939 McCormick Deering Farmall F-20



1945 AC Model C



1941 Case S

THU, SEPT 28, 2023 ✦ 10 A.M. MDT

Location: 3571 Crystal Lake Road, Moore, MT
Owner: Jim Janicek • Equipment info, call Bob Janicek @ 406-465-2069

VINTAGE TRACTORS

- 1945 IH Farmall H, hyd., narrow front, pto, good rubber, hydraulic loader w/o power down and manual bucket release, 19 hp. drawbar, 24 pto hp., good runner, s#FBH-211413, Janicek restoration 1989
- 1941 Case S, wide front, pto, no hyd., belt pulley, good front rubber, rear rubber fair, s#4509451S
- 1940 Minneapolis Moline RTS, pto, hand clutch, belt pulley, 18 drawbar, 26 belt, purchased from Paul Sohm from Kremlin, MT, s#403683, restored by Jim in 1996
- 1936 McCormick Deering Farmall F12, on steel, narrow front, unstyled, s#FS68810, restored
- 1937 Allis Chalmers WC, 19 hp drawbar, s#42106, restored
- 1928 Hart Parr 18-36, on steel, kerosene/gasoline fuel, made in Charles City, Iowa, s#30860, restored
- 1939 McCormick Deering Farmall F-20, narrow front, 16 hp., belt pulley, excellent rubber, s#FA131952, Janicek restoration 1992
- 1948 MM Universal ZTU, 25 hp/34 hp belt, pto, hand clutch, excellent rubber, s#582380U, restored in 2002
- 1928 Twin City 17-28, on steel, spoked flywheel, s#25897, 17 hp drawbar, kerosene/gasoline fuel, built in Minneapolis, MN
- 1957 MM GB, propane, cab, 68 hp belt hp, snow plow sells with the tractor, unrestored
- 1965 MM G705, diesel, 101 pto hp, 91 hp drawbar, needs injector pump work, sold new by Gilbert Barr, MM dealer in Hobson, MT, s#23901885-504CID
- 1958 MM GB, propane, 68 hp, pto, made in Minneapolis, MN, restored in 2004, s#08903456
- 1945 AC Model C, 14 hp drawbar, 17 hp belt, pto, rear rubber 60%, front rubber very good, 1 plow rated tractor, s#31926
- 1927 Fordson Model F, 6 hp drawbar, 18 hp belt, kerosene/gas fuel, built in Milwaukee, WI, s#720496, restored in 1987
- 1937 Allis Chalmers Model U, 34 hp, kerosene/gas fuel, good rear rubber, front rubber is weather checked, s#13055, restored in 1988
- 1926 McCormick Deering 10-20, 20 hp drawbar, 10 hp belt, on steel, kerosene/gas fuel, built in Chicago, Ill., restored 1985
- 1951 MM Model UTE, wide front, 36 hp drawbar, 45 hp belt, pto, wheel weights, hand clutch, front rubber near new, rear rubber weather checked, s#01107376, restored 2001
- 1948 Oliver 99, gas, 54 belt hp, 41 hp drawbar, belt pulley, built Charles City, Iowa, restored in 1993

- 1928 JD D, on steel, 15 hp drawbar, 27 hp belt, kerosene/gas, built in Waterloo, Iowa, s#60592, restored 1984
- 1934 Caterpillar Model 28, crawler, 30 hp drawbar, 37 hp belt, pto, good undercarriage, s#4F550, restored in 1994 by Jim Janicek. This model crawler was made 1934-1935. Rare.
- 1975 Oliver 1755, diesel, WF, cab, 3 pt., pto, single hyd. remote, 86 pto hp., 6133 hrs., 6 fwd/2 reverse transmission, swamp cooler. *Jim has owned this tractor since new.*

TRUCKS

- 1950 Dodge Power Wagon B-2PW126, 4 x 4, locking hubs, cable front winch, 8' box in original condition, grain box extensions, 34,547 original miles, s#83919265. *Bought new by Jim's dad Jimmy Janicek, in 1950.*
- 1955 Studebaker 1.5 ton truck, model E28-31, grain box and stock racks included, low original miles, good runner, partial restoration, s#E28-4162

ATTACHMENTS & OTHER

- JD sickle mower, drawbar mount, pto
- Snow King 3 pt. snow blower, pto drive, hyd. discharge
- JD Model 56 riding mower, 24" deck, 6 hp., good runner
- 1979 Polaris 340 Apollo snowmobile
- Craftsman 22" wheeled weed trimmer, B/S gas engine
- MW walk behind garden cultivator, gas engine
- Miscellaneous farm machinery including 3 one-way disks, 1 cultivator, side delivery steel wheeled hay rake

ANTIQUES & COLLECTIBLES

- Oak dresser, 53" h x 35" w, serpentine front
- Hardwood kitchen cupboard, 86" h x 46" w
- Vintage pop bottles; Vintage sewing machine w/cabinet
- Assorted vintage toys, Tonka and others
- Assorted Ball Mason canning jars
- Variety of antique tractor parts
- Assorted control line planes w/related parts
- Vintage house door w/frosted glass pane (etched wildlife scene), ca. 1900, very nice
- Wood heater stove from Moore, MT RR depot
- Quilt rack and hoops; Assorted vintage quilts
- Many more antiques & collectibles!

Live Auction with Internet Bidding Available at www.ShobeAuction.com
Office 406-538-5125 • Jayson 406-366-5125 • Kyle 406-366-0472



ASCENT
AUCTION SERVICES

FIRST CLASS MAIL
AUTO
U.S. POSTAGE
PAID
LEWISTOWN, MT
Permit No. 181



408 West Main
Lewistown, MT 59457

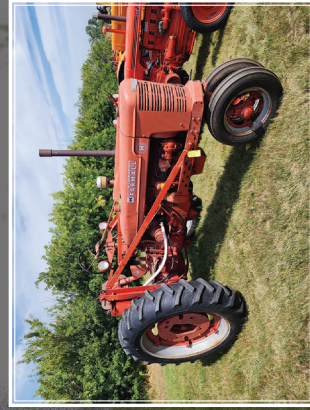


JANICEK'S IRON WHEEL RANCH

Live Auction with Internet Bidding Available
www.ShobeAuction.com



THU, SEPT 28, 2023 ✦ 10 A.M. MDT
3571 Crystal Lake Road, Moore, MT



1945 IH Farnall H



1937 Allis Chalmers Model U



1951 MM Model UTE



1937 Allis Chalmers WC



1975 Oliver 1755



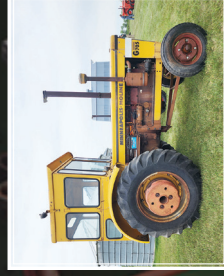
1957 MM GB



1948 Oliver 99



1940 MM RTS



1965 MM G705



Snow King



Kitchen Cupboard



Oak Dresser

Auctioneer's Note: Jim Janicek's reputation and eye for restoration is known far and wide. We are proud to be working with Jim and his family to offer his lifetime collection at auction. Plan to join us 9/28 for a special day in Central Montana! - Jayson & Kyle

Driving Directions: From Lewistown, go 7 miles west on US 87, then 3.5 miles south on Crystal Lake Rd.

Sale Order: 10 A.M. - Antiques, Shop Equipment & Parts. 12 NOON - Tractors, Trucks & Equip.

Terms: Photo ID required to register. Cash or Check day of Auction. Credit Cards not accepted on-site. Additional terms apply for internet bidders; see bidding website for details.

Load Out: Tractor/skid steer for load out will be available auction day and through Sat., Sept. 30th.

Shobe Auction: 406-538-5125

Equipment Inquiries: Bob Janicek 406-465-2069



www.ShobeAuction.com

ASCENT
AUCTION SERVICES