

Dearl Teel Estate Auction

10 am - Saturday - November 19, 2022

3730 County Street 2850, Ninnekah, OK 73067



**Brown Auction
and Real Estate**

**Jon Brown
Broker**

405-222-0330

Driving Directions:

From Chickasha head south on Hwy 81 for 14 miles to County Road 1490 (Old Dukes Store) then 2.2 miles east, then, south .25 miles to homestead on west side.

Preview Dates:

Weds. - Nov. 9th

Sun. - Nov. 13 - Fri. - Nov. 18

Grady County - Oklahoma Land Auction

253.58 Acres

Section 3-T4N-R7W

Selling in 3 Tracts

Tract 1 - 86 Acres (mol)

Farm House, Large Shop, Many Barns,
Several Sheds, Corrals, and more.

Tract 2 - 87 Acres (mol)

Fantastic Lake and Building Sites
Almost 1 mile of Blacktop Frontage

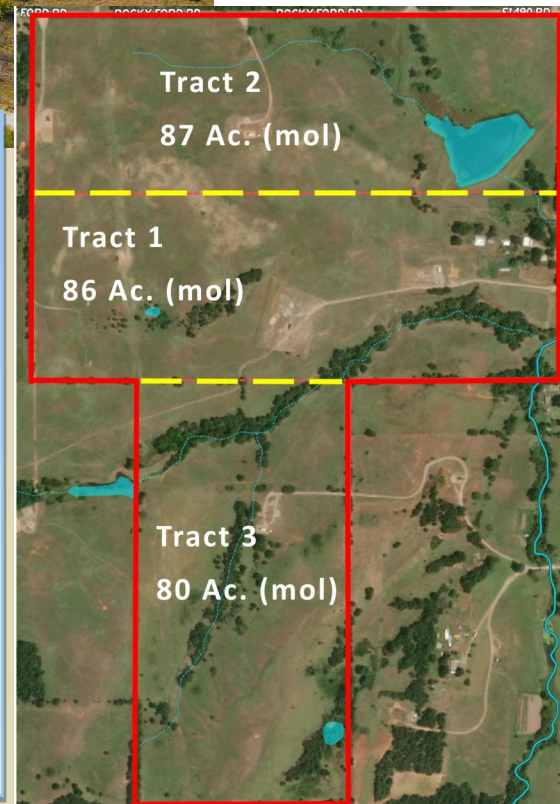
Tract 3 - 80 Acres

Excellent Deer Hunting
Cattle Ranch - Hay & Crop Production

10% Escrow Down Payment on sale day.

See Terms & Conditions on website

ok-realestate-auction.com



MF 5455 Tractor

2480 Hours

Excellent Condition

MF 360 Tractor

With Westendorf Loader

2400 hours - Nice



Farm Equipment & Farm Items

Woods BW180 Batwing Mower - 15 ft. - Very Good Condition

Hesston 3600 Mower 7 ft. 3 Pt., 6 ft. Box Blade, 6 ft. Angle Blade

JD RWD 11 ft. Disks (2), 10 ft. Chisel, One Way Disk, Scoop, 12 ft. Packer

JD Grain Drill 14 x 8, Lawn Mowers, 2000 gal. Diesel Tank w/ elec. Pump,

16 ft. Bumper Stock Trailer, 4 Bale Dump Trailer, Round bale Feeders,

Lots of Feed Troughs, many SHOP ITEMS and Household items.