

Complete Farm Dispersal

ROCKIN' R RANCH

3178 County Street 2810 - Ninnekah, OK

Directions: South of Chickasha on HWY 81, turn west on HWY 277 go 2 miles to County Street 2810, then south 2 miles.

9 am - Saturday - October 16, 2021



More detail on reverse side and on websites.

Farm Equipment - Tractors - Tools - Antiques - And more

This is the homestead, farm and life-time accumulation of Ray & Frances Anthony. A family well known in the community. Ray has passed and Frances is moving to town. Here is an opportunity for buyers of equipment, home, acreage, and land.

Real Estate Auction at 12 O'clock on site - Oct. 16th
Open House and Property Preview - 1 to 4 pm - Sunday - Oct. 10th



Brown Auction and Real Estate

South Central Oklahoma

Jon Brown - Broker
405-222-0330

Tract 1 - 2 Homes, Shop & 20 acres



Tract 2 - 109 acres - Grady County

Prime Bottomland Farm - Section 6 - T5N - R7 W
Alfalfa - Wheat - Bermuda - Grow anything in our Area
Little Washita River - Hunting - Farming - Ranching

www.ok-realestate-auction.com

ROCKIN' RANCH

Complete Farm Dispersal

9 am - Saturday - October 16, 2021

3178 County Street 2810 - Ninnekah, OK

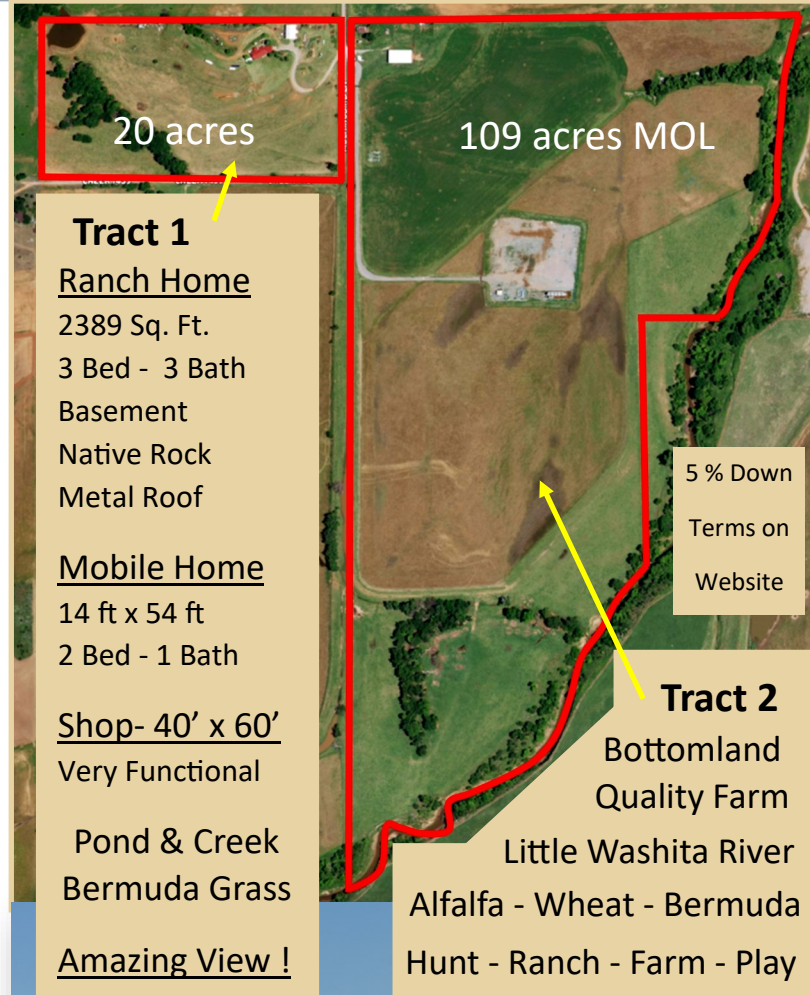
Open House & Property Preview - 1 to 4 pm - Sunday - Oct. 10th

AUCTION

- ◆ **Bottomland Farm - 109 Ac. MOL**
- ◆ **2 Homes - Shop - 20 Acres - Pond**
- ◆ **Farm Equipment - Large Amount**

FARM EQUIPMENT - Many Items NOT Listed

- | | |
|--|--|
| <p>JD 4240 Tractor - 5500+ hours
w/ JD 620 Loader - Quad Trans
w/ Bucket & Hay Fork</p> <p>JD 4030 Tractor - 4631+ hours
w/ Dozer Blade - Quad Trans</p> <p>JD 4840 Tractor - 5439 hours
Rebuilt Trans and Brakes
3 years ago - Power Shift</p> <p>JD 4020 Tractor - Power Shift
8926 hours - JD 48 Loader
Sev. Attachments for loader</p> <p>JD Turbo 7720 Combine
24 ft Header - 791+ hours
Good Shape - used this year</p> <p>JD 7700 Combine- 20' Header</p> <p>JD 435 Round Baler - Slick</p> <p>Hesston 2750 Baler - 3x3x8
Well Maintained - Nice</p> <p>JD 224 Baler - used last year</p> <p>Rowse 700 Carry - All
Like New - Very Nice</p> <p>IH 4900 Grain Truck - DT466E
Scissor Hoist- Tall Sideboards
1998 yr - 243,110 miles</p> <p>Ford 750 Cab Over Grain Truck
1969 - Twin Hoists - 5x2 Spd</p> <p>Ford 700 Truck- 24 ft Bed 1973</p> <p>Ford F350 Diesel 4x4 Truck
1993 yr - Steel Bed</p> <p>JD X320 Lawn Tractor - 600 hrs
2 - Big Red Honda 3 wheelers</p> <p>Honda Rancher 4 wheeler</p> <p>MF 1372 Disc Mower</p> <p>Hesston 1160 Swather</p> <p>H&S 12 wheel Hay Rake</p> <p>H&S 3 wheel Hay Tedder</p> <p>JD Left Hand Basket Rake</p> <p>Kneib Pop-up Hay Loader</p> <p>NH Rake Set - 258, 260, hitch
Woods 15 ft. Batwing Mower</p> <p>2- Hobbs 40' hay floats
Both with dollys</p> <p>Combine Trailer & Header Tlr.</p> <p>Material for 100'x 40' Barn</p> <p>10- 35'x12" I Beams</p> <p>8 - 30'x10" I Beams</p> <p>11 - 40' Open Face Trusses</p> <p>70 - 20' Unused Sheet Iron</p> <p>2 - 14'x19' Alum. Frame Doors</p> | <p>JD 210 Tandem Disk</p> <p>JD 930 3pt. Cultipacker - 15'</p> <p>JD 8300 Drill - 16 x 8 single</p> <p>TYE 2015 No-Till Drill - 15'</p> <p>Big 12 Grain Cart - 400 bu.</p> <p>Grain Auger 32' - Electric</p> <p>Krause 730 Chisel - 20'</p> <p>Krause Offset Disk - 12'</p> <p>Miller Offset Disk - 16'</p> <p>Greenline Field Cult. - 24'</p> <p>IH Chisel - 3 pt. 11 Shank</p> <p>JD 900 Field Cult. 12'</p> <p>JD 400 Grinder / Mixer</p> <p>JD 3 pt 13 Shank Field Cult.</p> <p>JD 5 & 7 ft. Shredder / Mower</p> <p>Shaffer Chisel - 10 Shank</p> <p>Cline Land Leveler - 12'
Leveler / Drag - 12'</p> <p>35' Folding Section Harrow</p> <p>JD 2450 6 Bottom Plow</p> <p>JD 3 & 4 Bot. Semi Mt Plows</p> <p>2 & 3 Bot. Plows - 3 pt.</p> <p>JD 11' & 14' Tandem Disks</p> <p>Land Plane - 40' - 10'blade
3 pt. Angle Swivel Blade</p> <p>MF Backhoe - needs repair</p> <p>2 set of JD Tractor Duals</p> <p>2 - 4 wheel trailers steel beds</p> <p>JD Grain Drill - Steel Wheel</p> <p>Antique Buck Rake</p> <p>Antique Farm Implements</p> <p>14+ Round & Sq. Hay feeders</p> <p>12- 16' & 10' Feed Troughs</p> <p>Auto. Cattle Truck Feeder</p> <p>Lots of Steel Panels & Gates</p> <p>Hydraulic Cattle Chute</p> <p>Pearson Squeeze Cattle Chute</p> <p>Cattle Portable Loading Chute</p> <p>V- Plow for drainage ditches</p> <p>Round Bale Unroller - 3 pt.</p> <p>Lewis Cattle Oiler/ Mineral</p> <p>Lots of T-Posts- Telephone Poles</p> <p>Lots of Elec. Fence Posts - etc...</p> <p>5 -S100 Gallagher Solar Chargers</p> <p>Gooseneck 36' Imp.Trailer - HDR</p> <p>Travlong 24' Cattle Trailer</p> <p>Stock Trailer - GN - 16 ft.</p> <p>Lots and LOTS MORE</p> |
|--|--|



Tract 1

Ranch Home

2389 Sq. Ft.
3 Bed - 3 Bath
Basement
Native Rock
Metal Roof

Mobile Home

14 ft x 54 ft
2 Bed - 1 Bath

Shop- 40' x 60'

Very Functional

Pond & Creek
Bermuda Grass

Amazing View !

5 % Down
Terms on
Website

Tract 2

Bottomland
Quality Farm

Little Washita River
Alfalfa - Wheat - Bermuda
Hunt - Ranch - Farm - Play



**Brown Auction
and Real Estate**

South Central Oklahoma

www.ok-realestate-auction.com