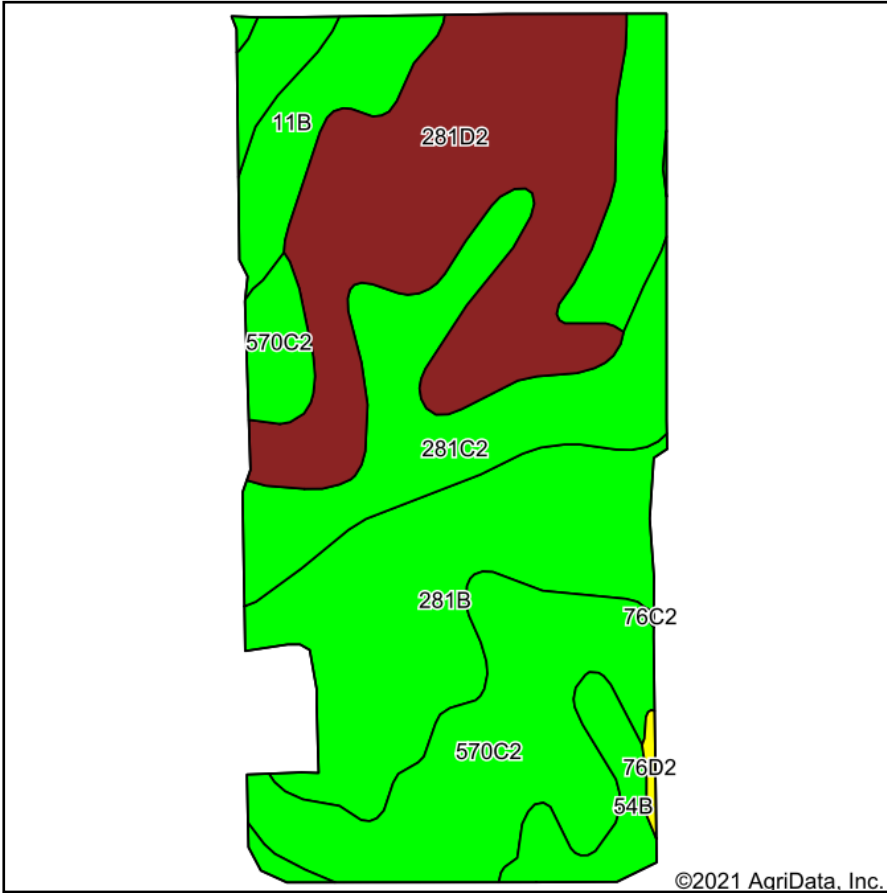
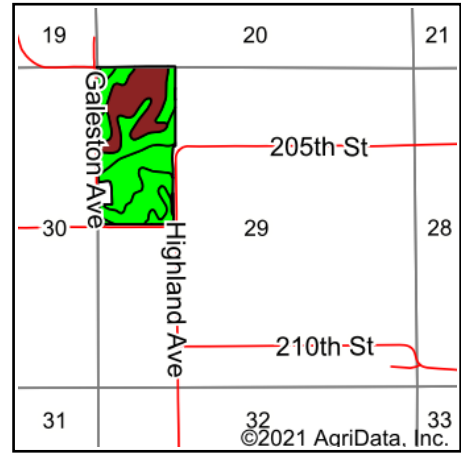


# Soils Map



Soils data provided by USDA and NRCS.



State: **Iowa**  
 County: **Mahaska**  
 Location: **29-76N-16W**  
 Township: **Madison**  
 Acres: **73.53**  
 Date: **9/17/2021**

**Hawkeye Farm Mgmt & Real Estate**

**United Country Real Estate**  
 22 N Main, Albia IA Phone: 641-932-7796  
 Email: hawkeye@uciowa.com  
 On the web: www.uciowa.com  
 www.iowawhitetailfarms.com

Maps Provided By:



Area Symbol: IA123, Soil Area Version: 26

Code	Soil Description	Acres	Percent of field	CSR2 Legend	Non-Irr Class *c	CSR2**	CSR	*n NCCPI Soybeans
281D2	Otley silty clay loam, 9 to 14 percent slopes, eroded	20.40	27.7%		IIIe	54	63	60
570C2	Nira silty clay loam, 5 to 9 percent slopes, moderately eroded	15.85	21.6%		IIIe	72	67	75
281B	Otley silty clay loam, 2 to 5 percent slopes	15.05	20.5%		IIe	91	92	77
281C2	Otley silty clay loam, 5 to 9 percent slopes, eroded	11.11	15.1%		IIIe	82	73	65
11B	Colo-Ely complex, 0 to 5 percent slopes	7.87	10.7%		IIw	86	68	76
54B	Zook silty clay loam, 2 to 5 percent slopes	3.01	4.1%		IIw	60	65	55
76D2	Ladoga silt loam, 9 to 14 percent slopes, eroded	0.24	0.3%		IIIe	49	58	63
<b>Weighted Average</b>						<b>73.3</b>	<b>71.9</b>	<b>*n 69</b>

\*\*IA has updated the CSR values for each county to CSR2.

\*n: The aggregation method is "Weighted Average using all components"

\*c: Using Capabilities Class Dominant Condition Aggregation Method

Soils data provided by USDA and NRCS.