

# Kiowa County, OK Land for Sale

Bid Online at [HeardAuction.Hibid.com](https://HeardAuction.Hibid.com)

Online-Only Auction:  
Wednesday, March 3

800± Acres  
Hunting & Farmland  
Country Home  
Personal Property



Heard Auction  
& Real Estate

3200 W. Modelle Ave, PO Box 1503, Clinton, OK 73601

PRESORTED  
STANDARD  
US POSTAGE  
PAID  
PERMIT NO. 38

**Minerals:** Selling surface rights only **Terms:** 10% Buyer's Premium will be added to the bid price. Property will sell subject to owner's confirmation. All properties are available for purchase prior to the auction. Visit [OKLandForSale.com](https://OKLandForSale.com) for a complete list of terms and conditions. Franchise office is independently owned and operated.

Online-Only Auction:  
Wednesday, March 3

Preview Date: Sunday Feb. 21 • 2 PM  
Call for Appointment



800± Acres • Hunting & Farmland • Country Home • Personal Property

TRACT #1 — 157± ACRES  
TRACT #2 — 160± ACRES  
TRACT #3 — 160± ACRES  
TRACT #4 — 150± ACRES  
TRACT #4A — 10± ACRES & HOME  
TRACT #5 — 160± ACRES



# Kiowa County, OK Land for Sale

800± Acres • Hunting & Farmland • Country Home • Personal Property

Preview Date:  
Sunday  
Feb. 21  
2 PM



Online-Only Auction: Wednesday, March 3



Heard Auction  
& Real Estate



REALTREE  
UNITED COUNTRY  
HUNTING PROPERTIES

[OKLandForSale.com](https://OKLandForSale.com) | 580-323-6120

Corky Heard, Owner/Broker/Auctioneer, TX Lic. #16261



Preview Date:

Sunday  
Feb. 21  
2 PM

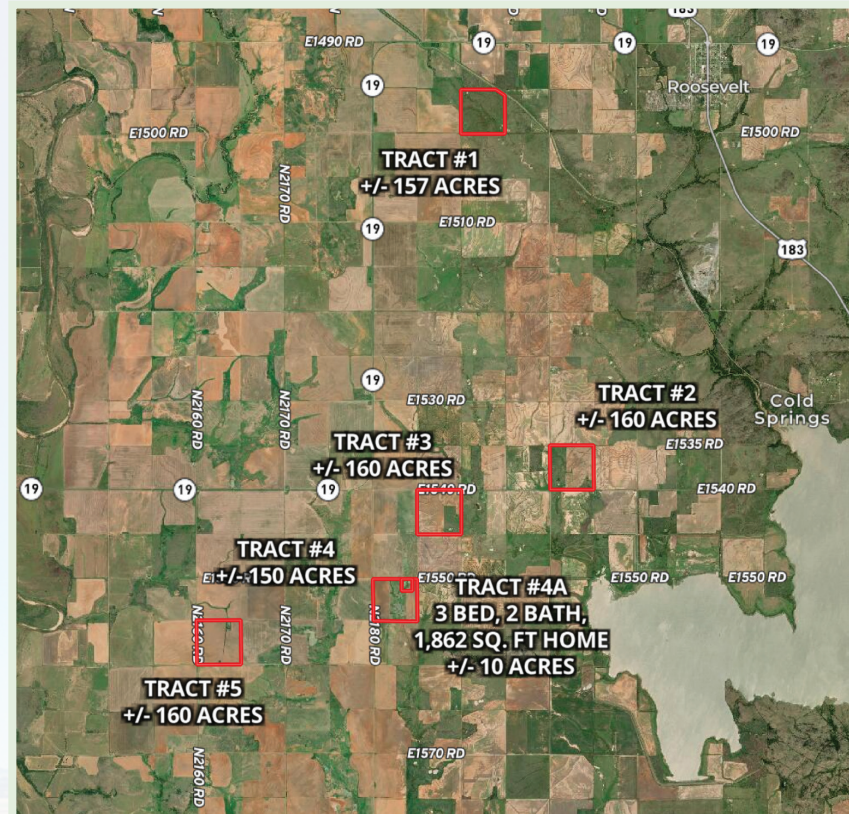
800± Acres

Hunting & Farmland

Country Home

Personal Property

All properties are available for  
purchase prior to the auction.



### TRACT #3 – 160± ACRES

- Cropland and Native Pasture
- Home & Outbuildings
- Small Ponds
- 1.5 miles NW of Tom Steed Reservoir

**Legal Description:**

A Tract of land in the NE/4, Sec 34-4-18, Kiowa County, Oklahoma



### TRACT #4 – 150± ACRES

- Crop and Grassland
- Ponds
- 1.5 miles west of Tom Steed Reservoir

**Legal description:**

A Tract of land in the NW/4 Sec 3-3-18, less 10 acres, Kiowa County, Oklahoma



### TRACT #1 – 157± ACRES

- Hunting & Grassland
- Multiple Ponds
- Great Deer & Hog Hunting
- Livestock Barn
- West of Roosevelt

**Legal Description:**

A Tract of land in the SW/4, Sec 2-4-18, less 2.76 acres, Kiowa County, Oklahoma



### TRACT #4A

- 10± Acres – Open Pasture
- 3 Bed, 2 Bath, 1,864 Sq. Ft Home
- Barns, Sheds, Silos, Carport
- Pond
- Beautiful views of the Wichita Mountains
- 1.5 miles west of Tom Steed Reservoir

**Legal description:**

Approximately 10 Acres located in the NW/4 Sec 3-3-18, Kiowa County, Oklahoma



### TRACT #2 – 160± ACRES

- Hunting & Cropland
- Small Ponds
- 1 mile north of Tom Steed Reservoir

**Legal Description:**

Tract of land in the SW/4, Sec 25-4-18, Kiowa County, Oklahoma



### TRACT #5 – 160± ACRES

- Cropland
- Ponds
- 3.5 miles west of Tom Steed Reservoir

**Legal Description:**

A Tract of land in the SW/4, Sec 5-3-18, Kiowa County, Oklahoma

Personal Property: Tools, Appliances, Antiques, Furniture & Much More!

Bid Online at [HeardAuction.Hibid.com](https://www.HeardAuction.Hibid.com)