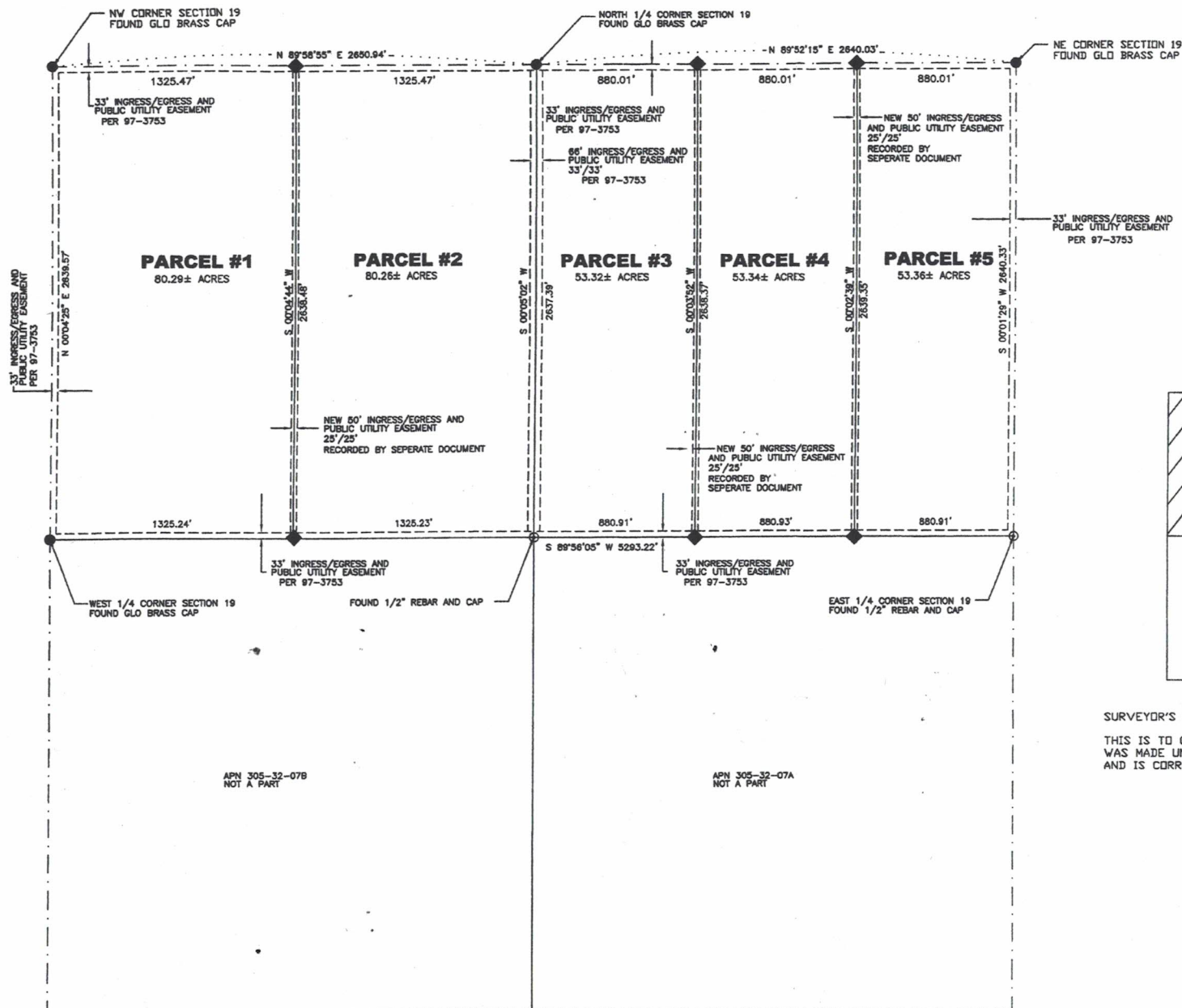


**THE NORTH HALF OF SECTION 19,
TOWNSHIP 5 N, RANGE 15 W,
GILA & SALT RIVER BASE AND MERIDIAN
LA PAZ COUNTY, ARIZONA
APN 305-32-006
MINOR LAND DIVISION OF PLOMOSA TRAILS
DOCUMENT # 97-3753 LPCR
OWNER - HIGH MOUNTAIN PARTNERS LLC**

LEGEND

THESE STANDARD SYMBOLS WILL
BE FOUND IN THE DRAWING.

- FOUND G.L.O. BRASS CAP
- ◆ SET 1/2" REBAR W/CAP 31595
- ⊙ FOUND 1/2" REBAR WITH CAP // 26401



LEGAL DESCRIPTION PARCEL #1

THE WEST 1/2 OF THE NORTHWEST 1/4 OF SECTION 19
TOWNSHIP 5 NORTH, RANGE 15 WEST, GILA AND SALT RIVER BASE AND
MERIDIAN, LA PAZ COUNTY, ARIZONA.
CONTAINING 80.29 ACRES

LEGAL DESCRIPTION PARCEL #2

THE EAST 1/2 OF THE NORTHWEST 1/4 OF SECTION 19
TOWNSHIP 5 NORTH, RANGE 15 WEST, GILA AND SALT RIVER BASE AND
MERIDIAN, LA PAZ COUNTY, ARIZONA.
CONTAINING 80.26 ACRES

LEGAL DESCRIPTION PARCEL #3

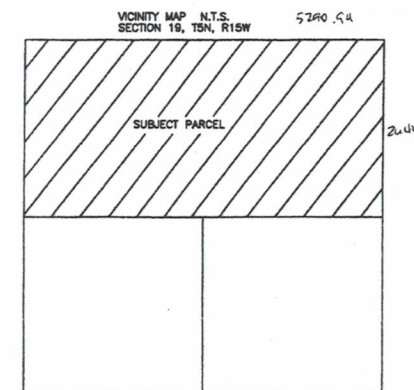
THE WEST 1/3 OF THE NORTHEAST 1/4 OF SECTION 19
TOWNSHIP 5 NORTH, RANGE 15 WEST, GILA AND SALT RIVER BASE AND
MERIDIAN, LA PAZ COUNTY, ARIZONA.
CONTAINING 53.32 ACRES

LEGAL DESCRIPTION PARCEL #4

THE EAST 1/3 OF THE WEST 2/3 OF THE NORTHEAST 1/4 OF SECTION 19
TOWNSHIP 5 NORTH, RANGE 15 WEST, GILA AND SALT RIVER BASE AND
MERIDIAN, LA PAZ COUNTY, ARIZONA.
CONTAINING 53.34 ACRES

LEGAL DESCRIPTION PARCEL #5

THE EAST 1/3 OF THE NORTHEAST 1/4 OF SECTION 19
TOWNSHIP 5 NORTH, RANGE 15 WEST, GILA AND SALT RIVER BASE AND
MERIDIAN, LA PAZ COUNTY, ARIZONA.
CONTAINING 53.36 ACRES



SURVEYOR'S CERTIFICATE

THIS IS TO CERTIFY THAT THE SURVEY OF THIS PLAT
WAS MADE UNDER MY DIRECTION AND SUPERVISION
AND IS CORRECTLY REPRESENTED ON THIS PLAT.

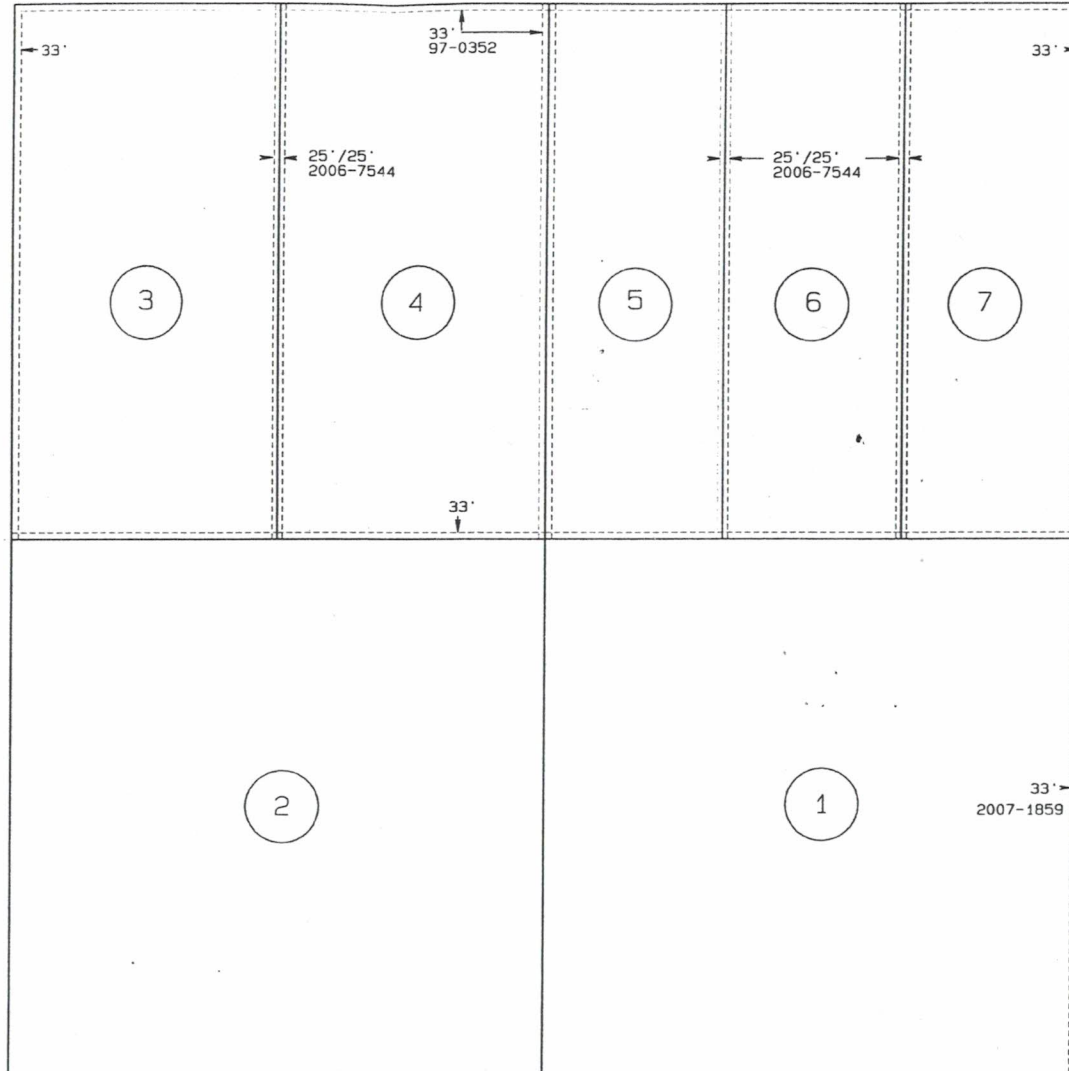


MINOR LAND DIVISION

DRAWN LG	DATE 11/06/06	SUMMIT SURVEYS LEE GRAY 928-380-8136
APPROVED	DATE	1003 W. PERALTA MESA, AZ. 85210
SCALE 1" = 400'	SHEET 1 OF 1	PROJECT NO. HIGH MOUNTAIN PARTNERS

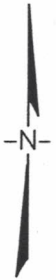
SEE MAP
305-32 1/6

66th St.



SEE MAP
305-32 1/6

65th St.

BOOK	MAP	PG.
305	43	
TWNS.	RANGE	SEC.
5 N	15 W	19
SECTION DETAIL:		
AREA CODE:	REVISION:	
2600/3003	11/29/07	
<p style="text-align: center;">  Reductions Not to Scale SCALE 1" = 600' FILE NAME: 305-43.SMI </p>		
<p style="text-align: center;"> LA PAZ COUNTY ASSESSOR GEORGE NAULT </p>		
<p style="text-align: center;"> <i>ASSESSOR PARCEL MAP</i> <i>FOR INFORMATION ONLY</i> <i>NO LIABILITY ASSUMED</i> </p>		

LEGAL DESCRIPTION PARCEL #1

IN 19
CAP
THE WEST 1/2 OF THE NORTHWEST 1/4 OF SECTION 19
TOWNSHIP 5 NORTH, RANGE 15 WEST, GILA AND SALT RIVER BASE AND
MERIDIAN, LA PAZ COUNTY, ARIZONA.
CONTAINING 80.29 ACRES

LEGAL DESCRIPTION PARCEL #2

THE EAST 1/2 OF THE NORTHWEST 1/4 OF SECTION 19
TOWNSHIP 5 NORTH, RANGE 15 WEST, GILA AND SALT RIVER BASE AND
MERIDIAN, LA PAZ COUNTY, ARIZONA.
CONTAINING 80.26 ACRES

LEGAL DESCRIPTION PARCEL #3

THE WEST 1/3 OF THE NORTHEAST 1/4 OF SECTION 19
TOWNSHIP 5 NORTH, RANGE 15 WEST, GILA AND SALT RIVER BASE AND
MERIDIAN, LA PAZ COUNTY, ARIZONA.
CONTAINING 53.32 ACRES

LEGAL DESCRIPTION PARCEL #4

THE EAST 1/3 OF THE WEST 2/3 OF THE NORTHEAST 1/4 OF SECTION 19
TOWNSHIP 5 NORTH, RANGE 15 WEST, GILA AND SALT RIVER BASE AND
MERIDIAN, LA PAZ COUNTY, ARIZONA.
CONTAINING 53.34 ACRES

LEGAL DESCRIPTION PARCEL #5

THE EAST 1/3 OF THE NORTHEAST 1/4 OF SECTION 19
TOWNSHIP 5 NORTH, RANGE 15 WEST, GILA AND SALT RIVER BASE AND
MERIDIAN, LA PAZ COUNTY, ARIZONA.
CONTAINING 53.36 ACRES

VICINITY MAP N.T.S.
SECTION 19, T5N, R15W

