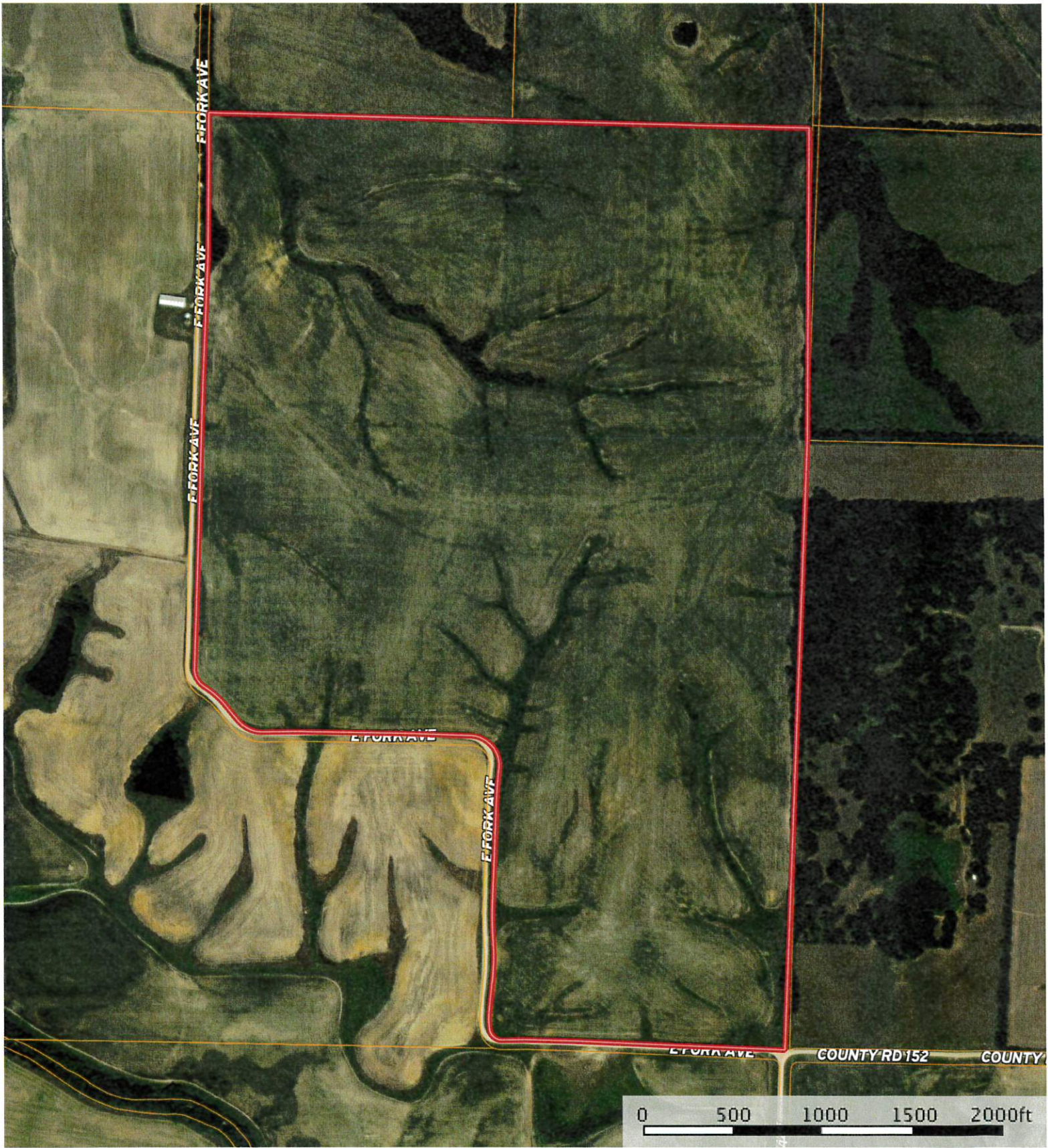


racine 199 - Tract 5

Chariton County, Missouri, 199 AC +/-



 Boundary

racine 199 - Tract 5

Chariton County, Missouri, 199 AC +/-



Boundary

Boundary 197.3 ac

SOIL CODE	SOIL DESCRIPTION	ACRES	%	CAP
30076	Gosport silty clay loam, 9 to 14 percent slopes, eroded	31.7	16.09	4e
10166	Higginsville silt loam, 2 to 5 percent slopes, eroded	71.6	36.3	2e
50030	Keswick silt loam, 9 to 20 percent slopes, eroded	4.2	2.14	6e
60196	Newcomer loam, 9 to 14 percent slopes, eroded	18.8	9.55	6e
50001	Armstrong loam, 5 to 9 percent slopes, eroded	4.4	2.22	4e
64029	Tina silt loam, 0 to 2 percent slopes, rarely flooded	0.9	0.44	2w
30120	Lagonda silty clay loam, 5 to 9 percent slopes, eroded	64.7	32.77	3e
66004	Dockery silt loam, 0 to 2 percent slopes, frequently flooded	1.0	0.49	3w
TOTALS		197.3	100%	3.17

Capability Legend

Increased Limitations and Hazards

Decreased Adaptability and Freedom of Choice Users

Land, Capability Class(non-irrigated)

	1	2	3	4	5	6	7	8
'Wild Life'	•	•	•	•	•	•	•	•
Forestry	•	•	•	•	•	•	•	
Limited	•	•	•	•	•	•	•	
Moderate	•	•	•	•	•	•		
Intense	•	•	•	•	•			
Limited	•	•	•	•				
Moderate	•	•	•					
Intense	•	•						
Very Intense	•							

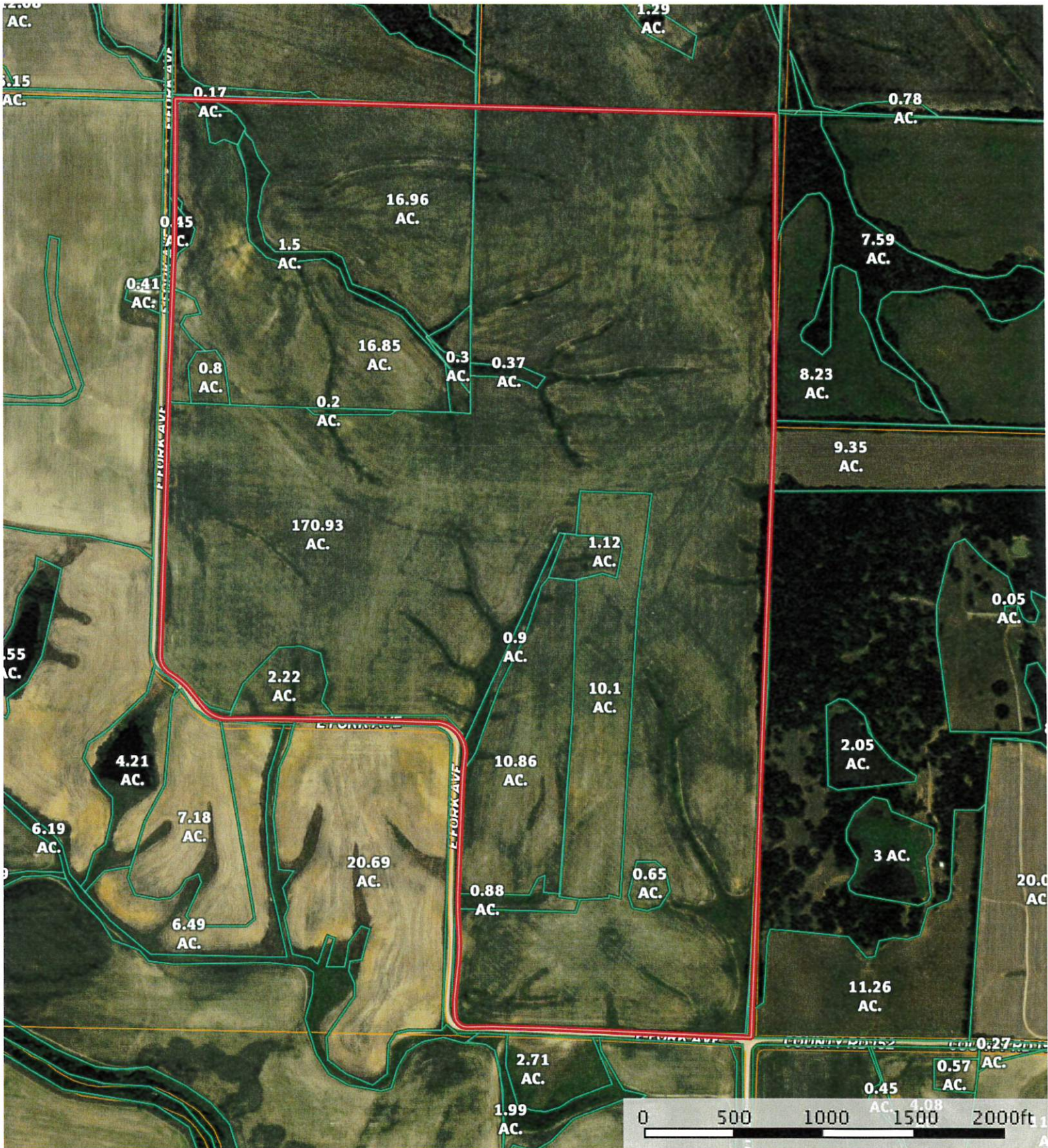
Grazing Cultivation

(c) climatic limitations (e) susceptibility to erosion

(s) soil limitations within the rooting zone (w) excess of water

racine 199 - Tract 5

Chariton County, Missouri, 199 AC +/-



Boundary



All Measurements are
For FSA Programs Only

Wetland Determination Identifiers

- Restricted Use
- ▼ Limited Restrictions
- Exempt from Conservation Compliance Provisions

Disclaimer: Wetland identifiers do not represent the size, shape or specific determination of the area. Refer to your original determination (CPA-026 and attached maps) for exact wetland boundaries and determinations, or contact NRCS.

Chariton Co. FSA

- DC = Double Crop
- C = Corn - Yel - GR
- SB = Soybn - Com - GR
- Milo = Sorgh - GRS - GR
- Wht = Wheat - SRW - GR
- Hay = MIXFG - LGM - FG
- P - MIXFG - LGM - GZ
- LS - MIXFG - LGM - LS
- *Unless notated on Map

1:9,730

Program Year: 2019

Created: 5/14/2019

Flown: 2016-06-22

- clu
- crp
- plss

**Farm 5813
Tract 10108**



Missouri
Chariton

U.S. Department of Agriculture
Farm Service Agency
Abbreviated 156 Farm Record

FARM: 5813
Prepared: 8/8/19 9:07 AM
Crop Year: 2019
Page: 5 of 6

Report ID: FSA-156EZ

DISCLAIMER: This is data extracted from the web farm database. Because of potential messaging failures in MIDAS, this data is not guaranteed to be an accurate and complete representation of data contained in the MIDAS system, which is the system of record for Farm Records.

Tract Number: 10108 **Description**

FSA Physical Location : Chariton, MO ANSI Physical Location: Chariton, MO

BIA Range Unit Number:

HEL Status: HEL: conservation system is being actively applied

Wetland Status: Wetland determinations not complete

WL Violations: None

Farmland	Cropland	DCP Cropland	WBP	WRP/EWP	CRP Cropland	GRP
315.08	294.3	294.3	0.0	0.0	0.0	0.0
State Conservation	Other Conservation	Effective DCP Cropland	Double Cropped	MPL/FWP		
0.0	0.0	294.3	1.42	0.0		

Crop	Base Acreage	CTAP Tran Yield	PLC Yield	CCC-505 CRP Reduction
WHEAT	83.52		42	0.0
SOYBEANS	0.5		31	0.0
Total Base Acres:	84.02			

Owners: RACINE, SUSIE

Other Producers: ENDERLE INC

Tract Number: 10109 **Description**

FSA Physical Location : Randolph, MO ANSI Physical Location: Randolph, MO

BIA Range Unit Number:

HEL Status: HEL Determinations not complete

Wetland Status: Wetland determinations not complete

WL Violations: None

Farmland	Cropland	DCP Cropland	WBP	WRP/EWP	CRP Cropland	GRP
59.79	57.7	57.7	0.0	0.0	0.0	0.0
State Conservation	Other Conservation	Effective DCP Cropland	Double Cropped	MPL/FWP		
0.0	0.0	57.7	0.28	0.0		

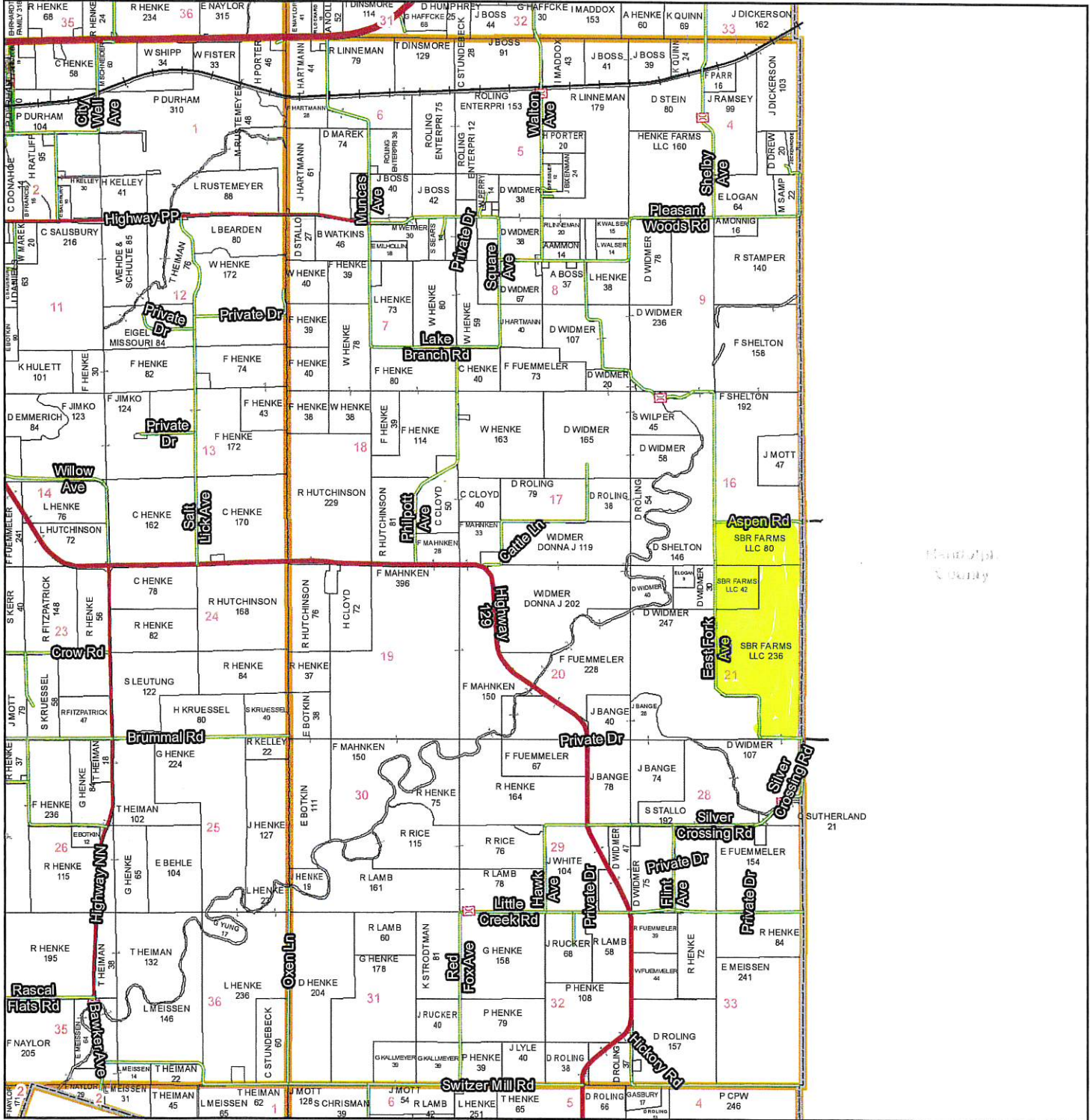
Crop	Base Acreage	CTAP Tran Yield	PLC Yield	CCC-505 CRP Reduction
WHEAT	16.38		42	0.0
SOYBEANS	0.1		31	0.0
Total Base Acres:	16.48			

Owners: RACINE, SUSIE

Other Producers: ENDERLE INC

T53N - R16W

See Page 45



See Page 65

Chariton County Commission
 Tony McCollum - Presiding Commissioner
 Danny Price - Western District Commissioner
 Steve Atkinson - Eastern District Commissioner

This data was primarily developed for tax purposes and is not considered survey accurate.

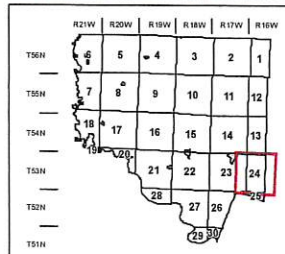
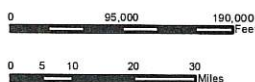
Data Courtesy Chariton County Geographic Information System
 Darrin Gladbach - Assessor

Most parcels > 10 ac labeled

GIS & Map Development By:



© Copyright Chariton County, MO



Legend

- City Limits
- US Highways
- Township-Range
- ST Highways
- Sections
- CO Highways
- Land Grant
- Streets
- Political Township
- Rail Roads
- Land Ownership
- Streams
- Subdivisions
- Land Hooks
- Conservation & US
- Bridges