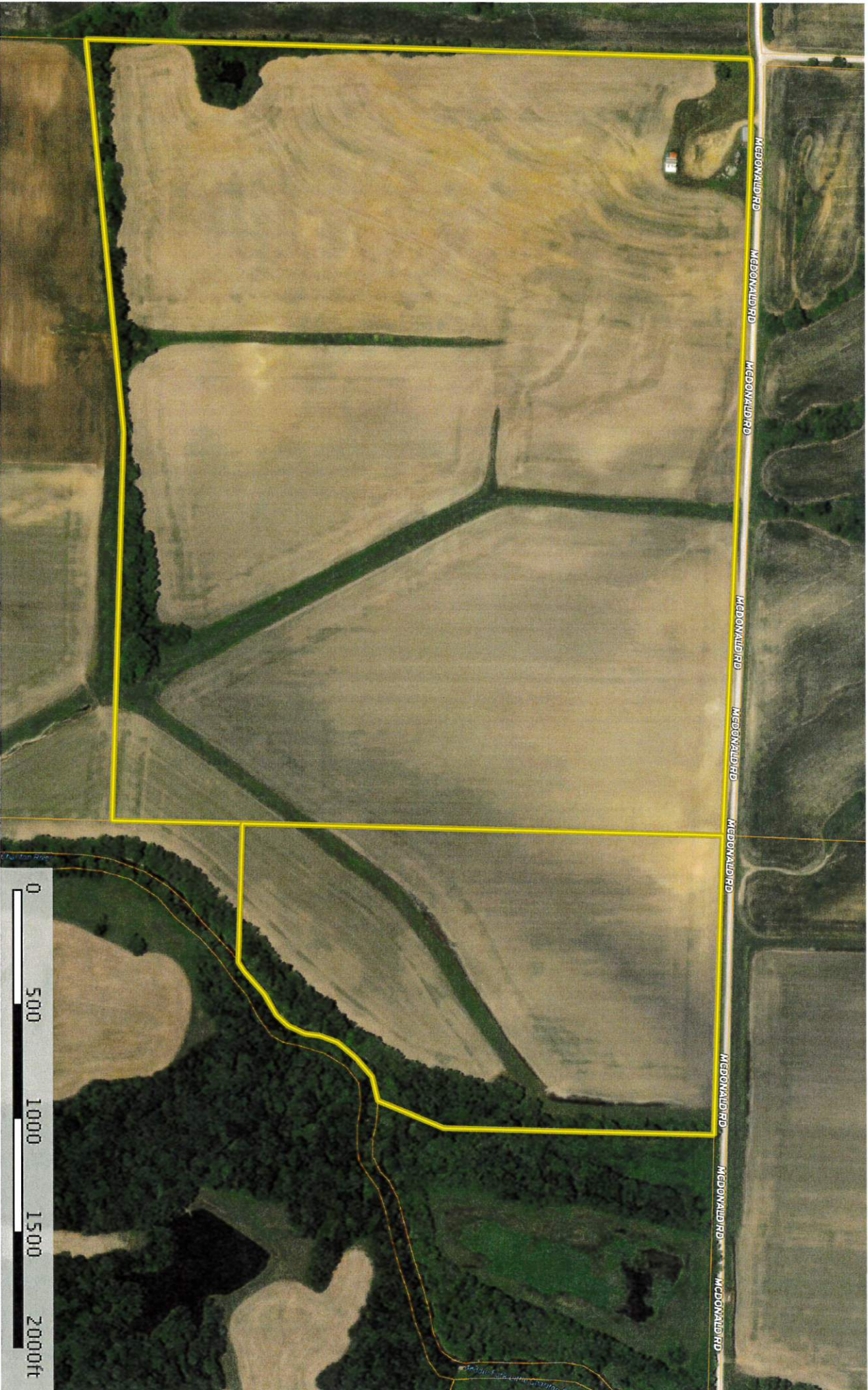


Tract 164

Chariton County, Missouri, 164.5 AC +/-



 Boundary

Kurt Hollenberg
P: 800-895-4430

www.MissouriLandAndHome.com

3600 I-70 Dr SE, Columbia, MO, 65201



The information contained herein was obtained from sources believed to be reliable. MapRight Services makes no warranties or guarantees as to the completeness or accuracy thereof.

Tract 164
Chariton County, Missouri, 164.5 AC +/-




Boundary

Kurt Hollenberg
P: 800-895-4430

www.MissouriLandAndHome.com

3600 I-70 Dr SE, Columbia, MO, 65201

 The information contained herein was obtained from sources deemed to be reliable. Missouri Land and Home Services makes no warranties or guarantees as to the completeness or accuracy thereof.

|  All Polygons 162.6 ac

SOIL CODE	SOIL DESCRIPTION	ACRES	%	CAP
13508	Colo silt loam, 0 to 2 percent slopes, occasionally flooded	31.8	19.56	2w
66106	Speed silt loam, 0 to 2 percent slopes, occasionally flooded	21.9	13.49	2w
66004	Dockery silt loam, 0 to 2 percent slopes, frequently flooded	52.7	32.45	3w
50001	Armstrong loam, 5 to 9 percent slopes, eroded	56.1	34.51	4e
TOTALS		162.6	100%	3.01

|  Boundary 128.6 ac

SOIL CODE	SOIL DESCRIPTION	ACRES	%	CAP
13508	Colo silt loam, 0 to 2 percent slopes, occasionally flooded	19.7	15.3	2w
66106	Speed silt loam, 0 to 2 percent slopes, occasionally flooded	4.4	3.42	2w
66004	Dockery silt loam, 0 to 2 percent slopes, frequently flooded	48.5	37.68	3w
50001	Armstrong loam, 5 to 9 percent slopes, eroded	56.1	43.61	4e
TOTALS		128.6	100%	3.25









|  Boundary 33.9 ac

SOIL CODE	SOIL DESCRIPTION	ACRES	%	CAP
13508	Colo silt loam, 0 to 2 percent slopes, occasionally flooded	12.1	35.69	2w
66106	Speed silt loam, 0 to 2 percent slopes, occasionally flooded	17.5	51.66	2w
66004	Dockery silt loam, 0 to 2 percent slopes, frequently flooded	4.3	12.63	3w
50001	Armstrong loam, 5 to 9 percent slopes, eroded	0.0	0.02	4e
TOTALS		33.9	100%	2.13

Capability Legend

Increased Limitations and Hazards

Decreased Adaptability and Freedom of Choice Users

Land, Capability Class(non-irrigated)								
	1	2	3	4	5	6	7	8
'Wild Life'	•	•	•	•	•	•	•	•
Forestry	•	•	•	•	•	•	•	
Limited	•	•	•	•	•	•	•	
Moderate	•	•	•	•	•	•		
Intense	•	•	•	•	•			
Limited	•	•	•	•				
Moderate	•	•	•					
Intense	•	•						
Very Intense	•							

Grazing Cultivation

(c) climatic limitations (e) susceptibility to erosion

(s) soil limitations within the rooting zone (w) excess of water

Tract 164
Chariton County, Missouri, 164.5 AC +/-



 Boundary

Kurt Hollenberg
P: 800-895-4430

www.MissourilandandHome.com

3600 I-70 Dr SE, Columbia, MO, 65201



The information contained herein was obtained from sources deemed to be reliable. Missouri Land and Home Services makes no warranties or guarantees as to the completeness or accuracy thereof.



**All Measurements are
For FSA Programs Only**

Wetland Determination Identifiers

- Restricted Use
- ▼ Limited Restrictions
- Exempt from Conservation Compliance Provisions

Disclaimer: Wetland identifiers do not represent the size, shape or specific determination of the area. Refer to your original determination (CPA-026 and attached maps) for exact wetland boundaries and determinations, or contact NRCS.

Chariton Co. FSA

- DC = Double Crop
- C = Corn - Yel - GR
- SB = Soybn - Com - GR
- Milo = Sorgh - GRS - GR
- Wht = Wheat - SRW - GR
- Hay = MIXFG - LGM - FG
- P - MIXFG - LGM - GZ
- LS - MIXFG - LGM - LS
- *Unless notated on Map

1:7,920

Program Year: 2019

Created: 5/14/2019

Flown: 2016-06-15

- clu
- crp
- plss

**Farm 5813
Tract 3095**



Missouri
Chariton

U.S. Department of Agriculture
Farm Service Agency

Prepared: 8/8/19 9:07 AM
Crop Year: 2019

Report ID: FSA-156EZ

Abbreviated 156 Farm Record

Page: 2 of 6

DISCLAIMER: This is data extracted from the web farm database. Because of potential messaging failures in MIDAS, this data is not guaranteed to be an accurate and complete representation of data contained in the MIDAS system, which is the system of record for Farm Records.

Other Producers: ENDERLE INC

Tract Number: 1970 Description L2/2A S7,18 T56N R17W

FSA Physical Location : Chariton, MO ANSI Physical Location: Chariton, MO

BIA Range Unit Number:

HEL Status: NHEL: no agricultural commodity planted on undetermined fields

Wetland Status: Wetland determinations not complete

WL Violations: None

Farmland	Cropland	DCP Cropland	WBP	WRP/EWP	CRP Cropland	GRP
136.03	79.44	79.44	0.0	0.0	0.0	0.0
State Conservation	Other Conservation	Effective DCP Cropland	Double Cropped	MPL/FWP		
0.0	0.0	79.44	1.4	0.0		

Crop	Base Acreage	CTAP Tran Yield	PLC Yield	CCC-505 CRP Reduction
WHEAT	0.1		42	0.0
CORN	70.4		106	0.0
GRAIN SORGHUM	0.8		76	0.0
SOYBEANS	4.3		31	0.0
Total Base Acres:	75.6			

Owners: RACINE, SUSIE

Other Producers: ENDERLE INC

Tract Number: 3095 Description P10/1A S20/21 T54N R16W

FSA Physical Location : Chariton, MO ANSI Physical Location: Chariton, MO

BIA Range Unit Number:

HEL Status: HEL Determinations not complete

Wetland Status: Wetland determinations not complete

WL Violations: None

Farmland	Cropland	DCP Cropland	WBP	WRP/EWP	CRP Cropland	GRP
164.71	136.98	136.98	0.0	0.0	0.0	0.0
State Conservation	Other Conservation	Effective DCP Cropland	Double Cropped	MPL/FWP		
0.0	0.0	136.98	2.2	0.0		

Crop	Base Acreage	CTAP Tran Yield	PLC Yield	CCC-505 CRP Reduction
WHEAT	14.0		42	0.0

Missouri
Chariton

U.S. Department of Agriculture
Farm Service Agency

FARM: 5813

Prepared: 8/8/19 9:07 AM

Crop Year: 2019

Report ID: FSA-156EZ

Abbreviated 156 Farm Record

Page: 3 of 6

DISCLAIMER: This is data extracted from the web farm database. Because of potential messaging failures in MIDAS, this data is not guaranteed to be an accurate and complete representation of data contained in the MIDAS system, which is the system of record for Farm Records.

Crop	Base Acreage	CTAP Tran Yield	PLC Yield	CCC-505 CRP Reduction
SOYBEANS	124.5		31	0.0
Total Base Acres:	138.5			

Owners: RACINE, SUSIE

Other Producers: ENDERLE INC

Tract Number: 7584 Description C8/2B S8 T53 R15 29-175

FSA Physical Location : Randolph, ANSI Physical Location: Randolph, MO

BIA Range Unit Number:

HEL Status: HEL Determinations not complete

Wetland Status: Wetland determinations not complete

WL Violations: None

Farmland	Cropland	DCP Cropland	WBP	WRP/EWP	CRP Cropland	GRP
120.27	93.24	93.24	0.0	0.0	0.0	0.0
State Conservation	Other Conservation	Effective DCP Cropland	Double Cropped	MPL/FWP		
0.0	0.0	93.24	1.5	0.0		

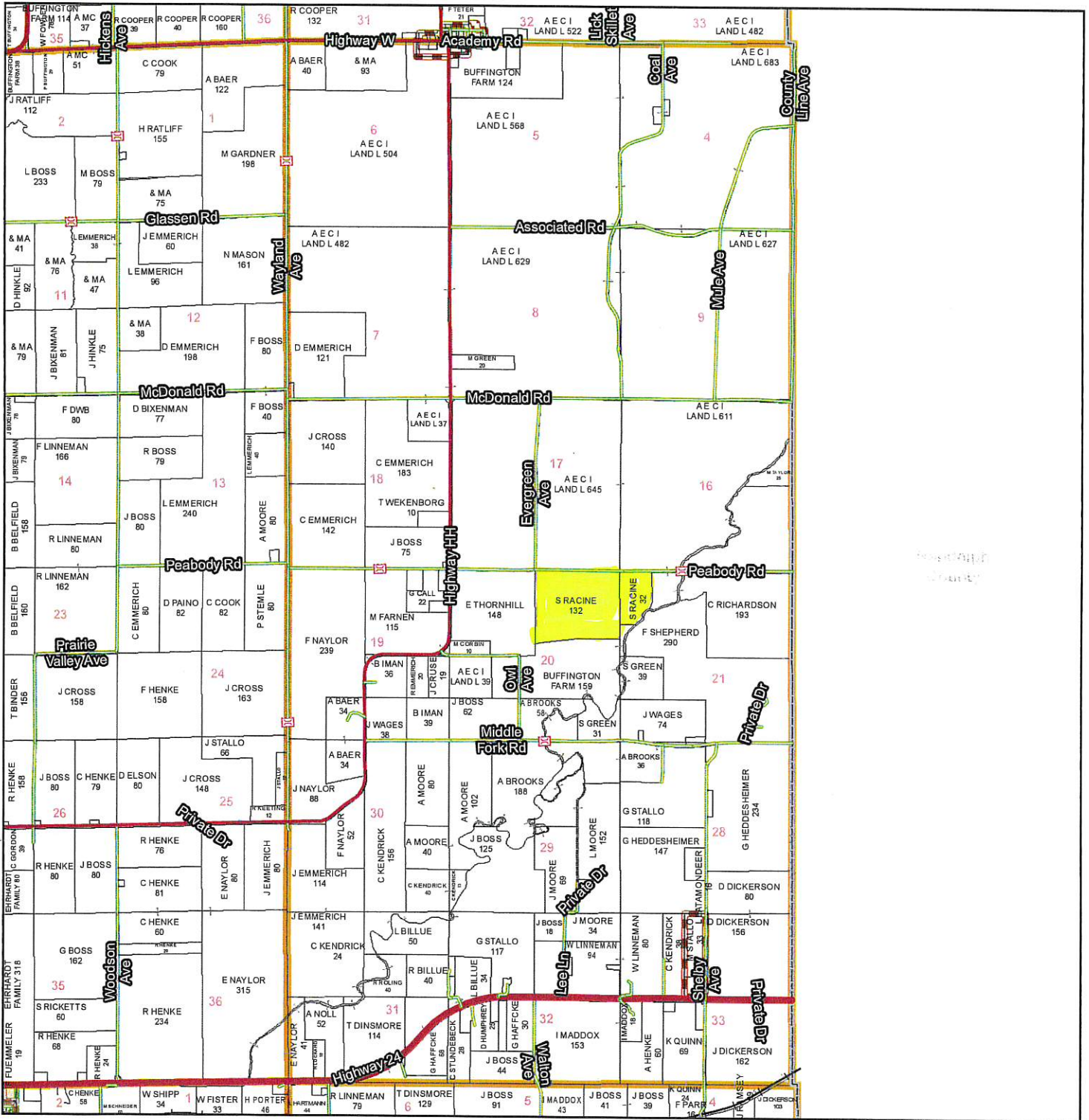
Crop	Base Acreage	CTAP Tran Yield	PLC Yield	CCC-505 CRP Reduction
WHEAT	18.1		42	0.0
CORN	17.8		106	0.0
GRAIN SORGHUM	0.2		76	0.0
SOYBEANS	58.6		31	0.0
Total Base Acres:	94.7			

Owners: RACINE, SUSIE

Other Producers: ENDERLE INC

T54N - R16W

See Page 33



See Page 43

See Page 57

Chariton County Commission
 Tony McCollum - Presiding Commissioner
 Danny Price - Western District Commissioner
 Steve Atkinson - Eastern District Commissioner

Data Courtesy Chariton County Geographic Information System
 Darrin Gladbach - Assessor

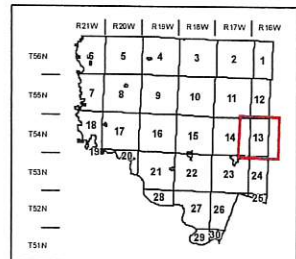
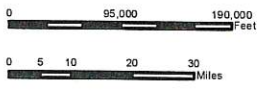
This data was primarily developed for tax purposes and is not considered survey accurate.

Most parcels > 10 ac labeled

GIS & Map Development By:



© Copyright Chariton County, MO



Legend	
	City Limits
	Township-Range
	Sections
	Land Grant
	Political Township
	Land Ownership
	Subdivisions
	Conservation & US
	US Highways
	ST Highways
	CO Highways
	Streets
	Rail Roads
	Streams
	Land Hooks
	Bridges