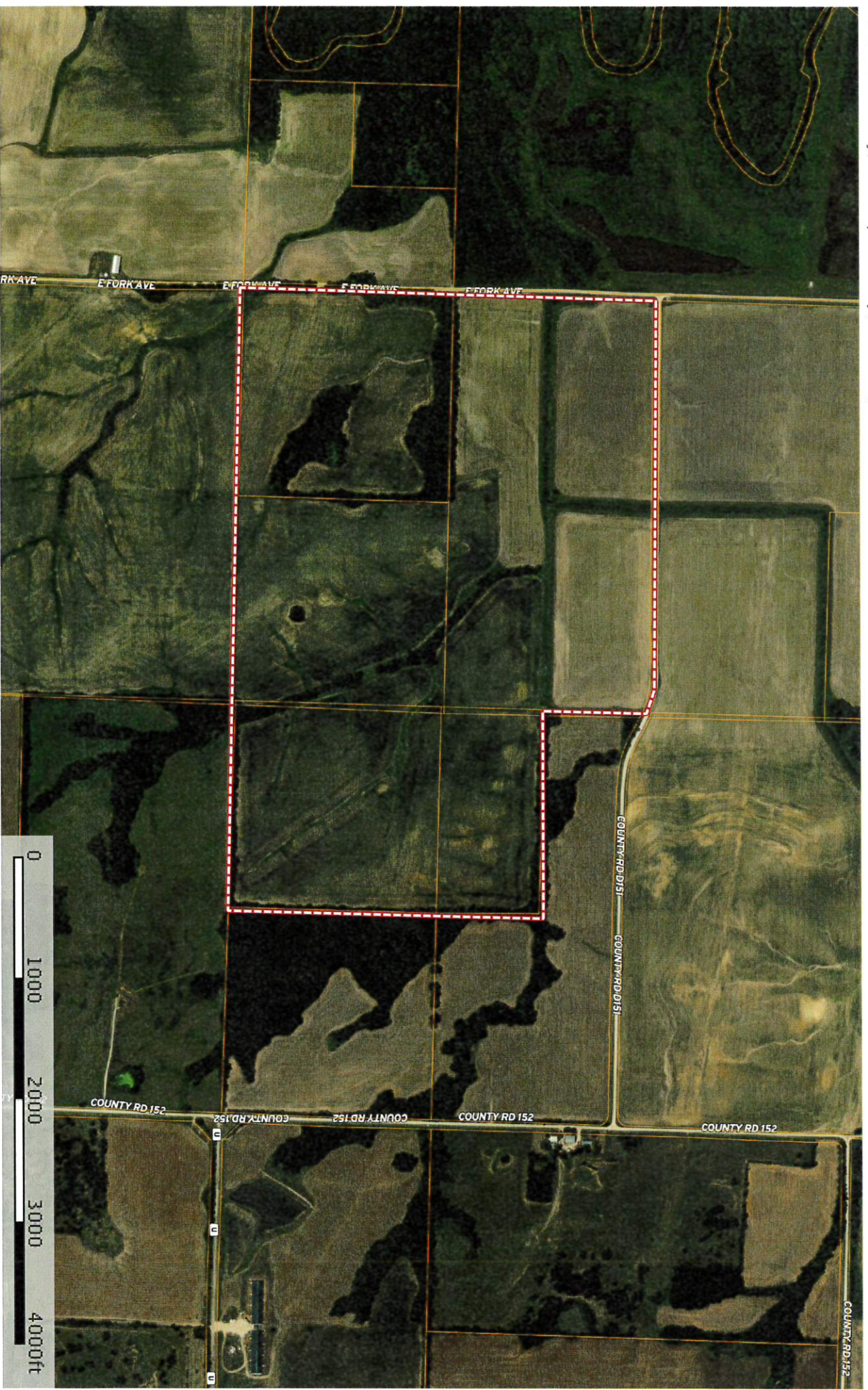


Tract 4 - 220 ac m/l
Chariton County, Randolph County, Missouri, 220 AC +/-



 Boundary

Kurt Hollenberg
P: 800-895-4430

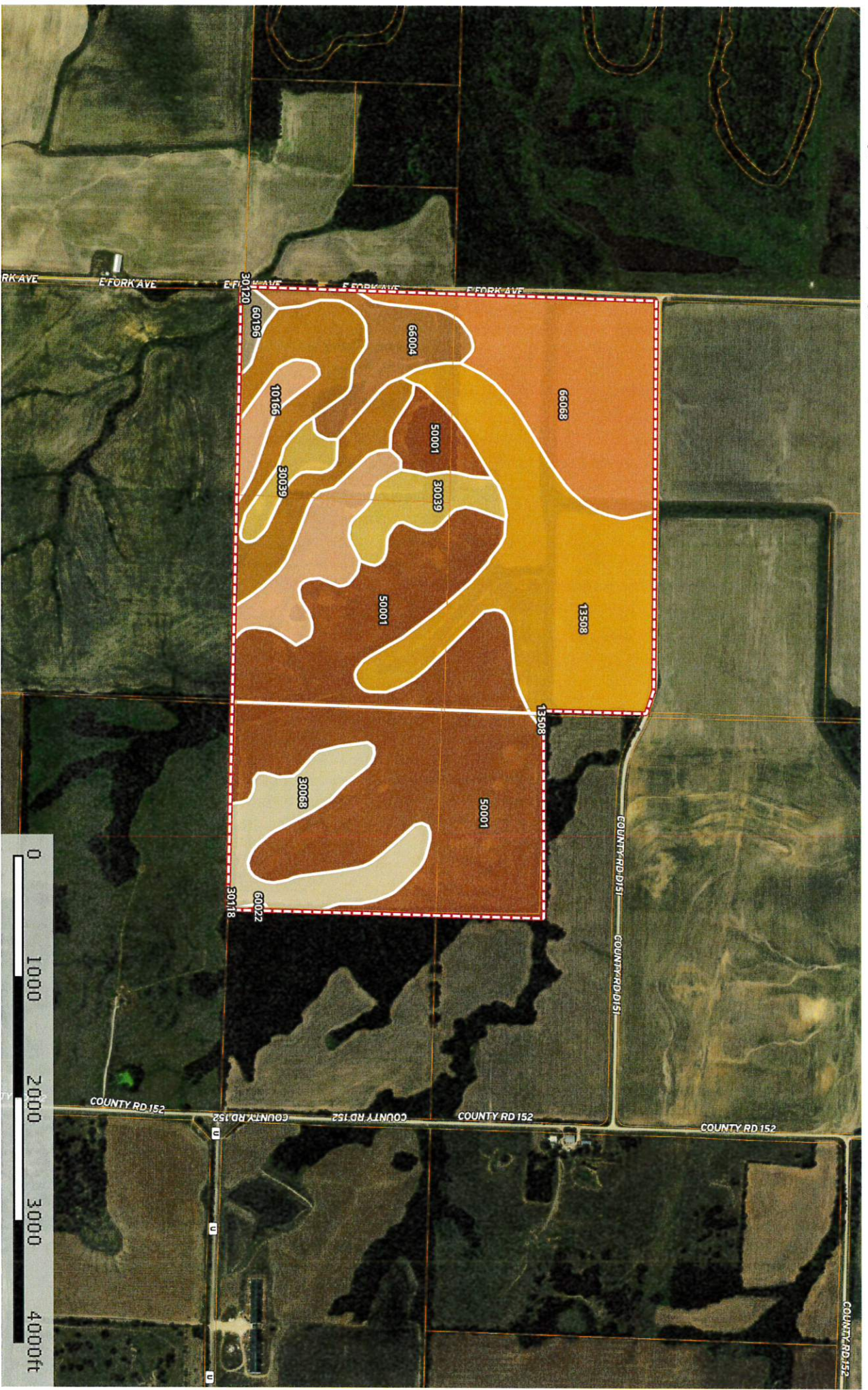
www.MissouriLandAndHome.com

3600 I-70 Dr SE, Columbia, MO. 65201



This information contained herein was obtained from sources deemed to be reliable. MapInfo Services makes no warranties or guarantees as to the completeness or accuracy thereof.

Tract 4 - 220 ac m/l
Chariton County, Randolph County, Missouri, 220 AC +/-



Boundary



Kurt Hollenberg
P: 800-895-4430

www.MissouriLandAndHome.com

3600 I-70 Dr SE, Columbia, MO. 65201



The information contained herein was obtained from sources deemed to be reliable. MapRight Services makes no warranties or guarantees as to the completeness or accuracy thereof.

Boundary 222.7 ac

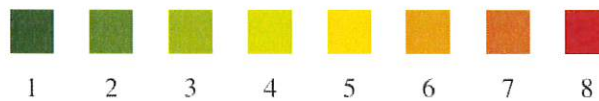
SOIL CODE	SOIL DESCRIPTION	ACRES	%	CAP
60022	Leonard silt loam, 1 to 6 percent slopes, eroded	0.1	0.07	3e
30118	Lagonda silt loam, 5 to 9 percent slopes, eroded	0.0	0.0	3e
30068	Gorin silt loam, 5 to 9 percent slopes, eroded	13.7	6.15	3e
13508	Colo silt loam, 0 to 2 percent slopes, occasionally flooded	43.0	19.31	2w
50001	Armstrong loam, 5 to 9 percent slopes, eroded	81.6	36.64	4e
60196	Newcomer loam, 9 to 14 percent slopes, eroded	1.6	0.74	6e
10166	Higginsville silt loam, 2 to 5 percent slopes, eroded	13.4	6.01	2e
66068	Carlow silty clay, 0 to 2 percent slopes, occasionally flooded	30.4	13.63	3w
30039	Armstrong loam, 9 to 14 percent slopes, eroded	10.5	4.69	4e
30120	Lagonda silty clay loam, 5 to 9 percent slopes, eroded	18.7	8.4	3e
66004	Dockery silt loam, 0 to 2 percent slopes, frequently flooded	9.7	4.37	3w
TOTALS		222.7	100%	3.18

Capability Legend

Increased Limitations and Hazards

Decreased Adaptability and Freedom of Choice Users

Land, Capability Class(non-irrigated)



'Wild Life'

1 2 3 4 5 6 7 8

Forestry

Limited

Moderate

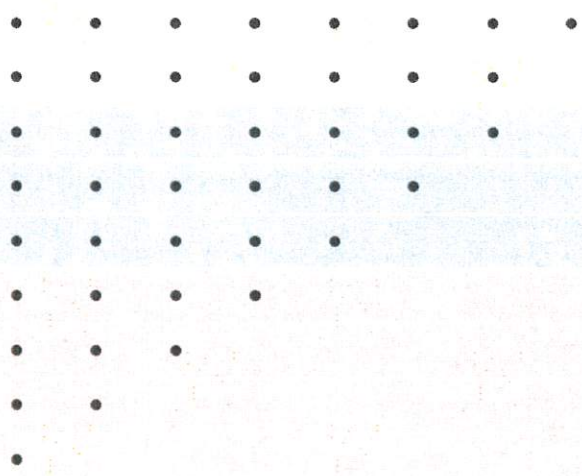
Intense

Limited

Moderate

Intense

Very Intense

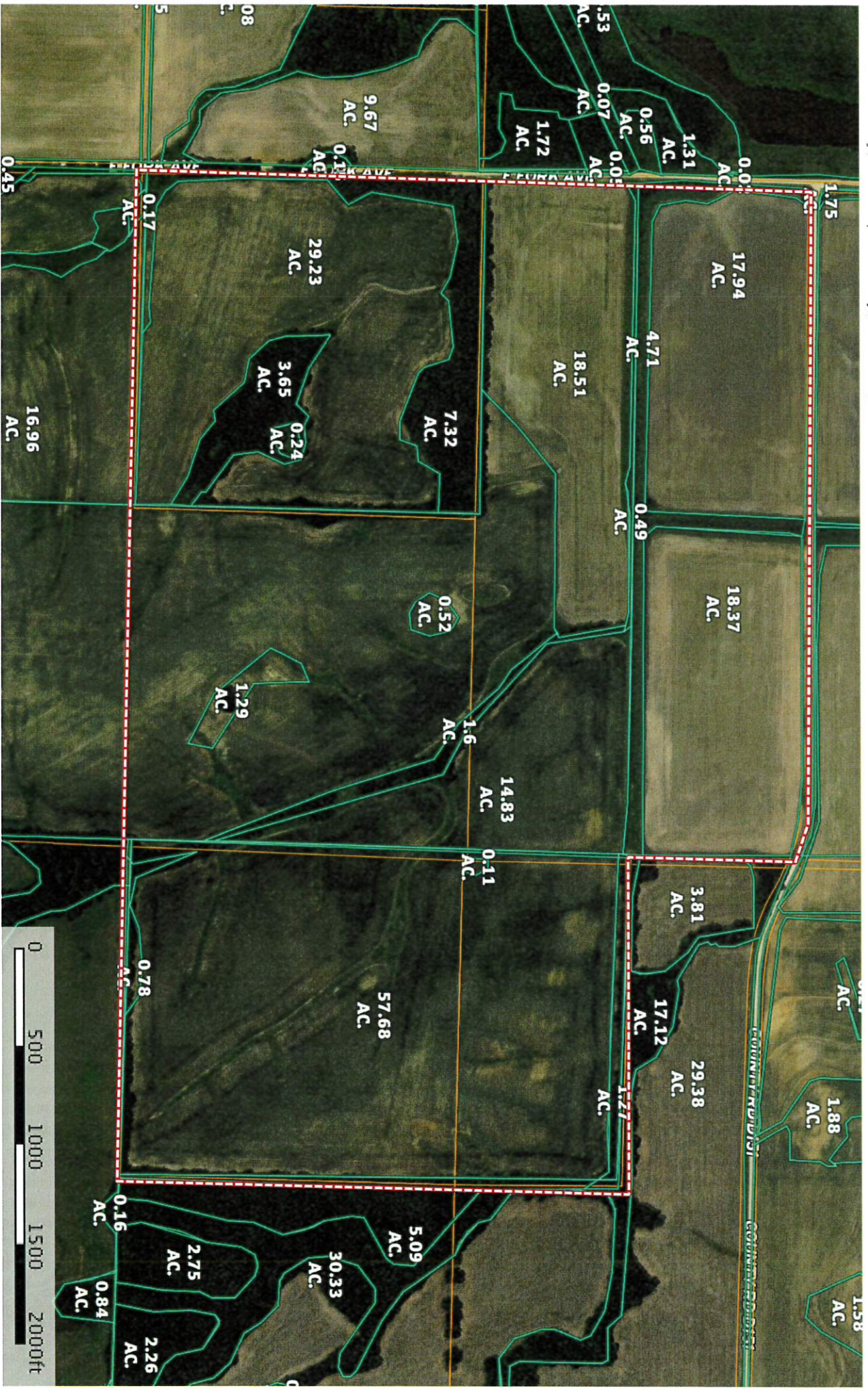


Grazing Cultivation

(c) climatic limitations (e) susceptibility to erosion

(s) soil limitations within the rooting zone (w) excess of water

Tract 4 - 220 ac m/l
 Chariton County, Randolph County, Missouri, 220 AC +/-



Boundary



Kurt Hollenberg
 P: 800-895-4430

www.MissouriLandAndHome.com

3600 I-70 Dr SE, Columbia, MO. 65201



The information contained herein was obtained from sources deemed to be reliable. MapRight Services makes no warranties or guarantees as to the completeness or accuracy thereof.



**All Measurements are
For FSA Programs Only
Wetland Determination Identifiers**

- Restricted Use
 - ▼ Limited Restrictions
 - Exempt from Conservation Compliance Provisions
- Disclaimer: Wetland identifiers do not represent the size, shape or specific determination of the area. Refer to your original determination (CPA-026 and attached maps) for exact wetland boundaries and determinations, or contact NRCS.

Chariton Co. FSA

- DC = Double Crop
- C = Corn - Yel - GR
- SB = Soybn - Com - GR
- Milo = Sorgh - GRS - GR
- Wht = Wheat - SRW - GR
- Hay = MIXFG - LGM - FG
- P - MIXFG - LGM - GZ
- LS - MIXFG - LGM - LS
- *Unless notated on Map

1:7,920

Program Year: 2019

Created: 5/14/2019

Flown: 2016-06-22

- clu
- crp
- plss

Farm 5813
Tract 10109





All Measurements are
For FSA Programs Only

Wetland Determination Identifiers

- Restricted Use
- ▼ Limited Restrictions
- Exempt from Conservation Compliance Provisions

Disclaimer: Wetland identifiers do not represent the size, shape or specific determination of the area. Refer to your original determination (CPA-026 and attached maps) for exact wetland boundaries and determinations, or contact NRCS.

Chariton Co. FSA

- DC = Double Crop
- C = Corn - Yel - GR
- SB = Soybn - Com - GR
- Milo = Sorgh - GRS - GR
- Wht = Wheat - SRW - GR
- Hay = MIXFG - LGM - FG
- P - MIXFG - LGM - GZ
- LS - MIXFG - LGM - LS
- *Unless notated on Map

1:9,730

Program Year: 2019

Created: 5/14/2019

Flown: 2016-06-22

- clu
- crp
- plss

**Farm 5813
Tract 10108**



Missouri
 Chariton
 Report ID: FSA-156EZ

U.S. Department of Agriculture
 Farm Service Agency
Abbreviated 156 Farm Record

FARM: 5813
 Prepared: 8/8/19 9:07 AM
 Crop Year: 2019
 Page: 5 of 6

DISCLAIMER: This is data extracted from the web farm database. Because of potential messaging failures in MIDAS, this data is not guaranteed to be an accurate and complete representation of data contained in the MIDAS system, which is the system of record for Farm Records.

Tract Number: 10108 **Description**
FSA Physical Location : Chariton, MO **ANSI Physical Location:** Chariton, MO
BIA Range Unit Number:
HEL Status: HEL: conservation system is being actively applied
Wetland Status: Wetland determinations not complete
WL Violations: None

Farmland	Cropland	DCP Cropland	WBP	WRP/EWP	CRP Cropland	GRP
315.08	294.3	294.3	0.0	0.0	0.0	0.0
State Conservation	Other Conservation	Effective DCP Cropland	Double Cropped	MPL/FWP		
0.0	0.0	294.3	1.42	0.0		

Crop	Base Acreage	CTAP Tran Yield	PLC Yield	CCC-505 CRP Reduction
WHEAT	83.52		42	0.0
SOYBEANS	0.5		31	0.0
Total Base Acres:	84.02			

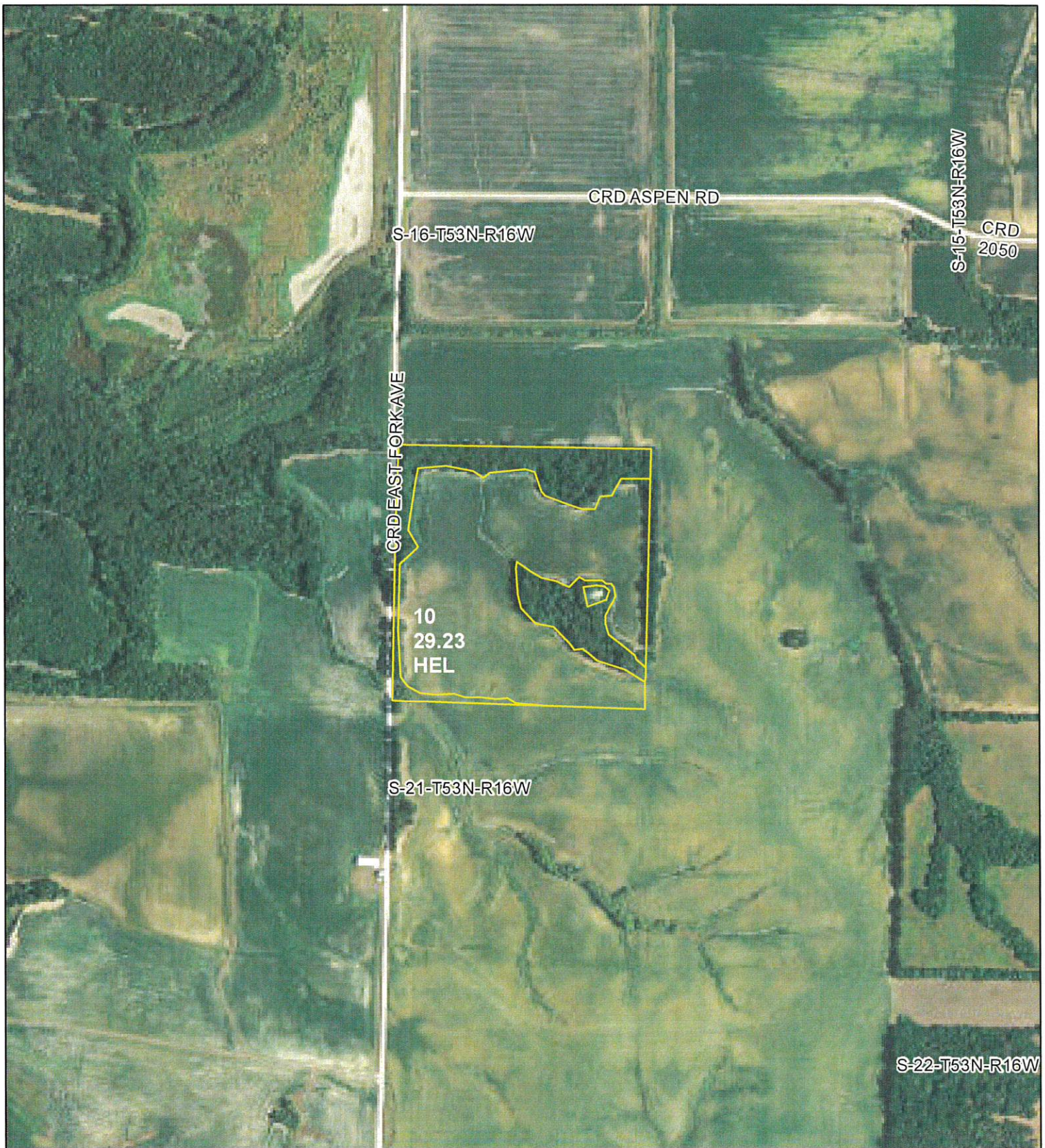
Owners: RACINE, SUSIE
Other Producers: ENDERLE INC

Tract Number: 10109 **Description**
FSA Physical Location : Randolph, **ANSI Physical Location:** Randolph, MO
BIA Range Unit Number:
HEL Status: HEL Determinations not complete
Wetland Status: Wetland determinations not complete
WL Violations: None

Farmland	Cropland	DCP Cropland	WBP	WRP/EWP	CRP Cropland	GRP
59.79	57.7	57.7	0.0	0.0	0.0	0.0
State Conservation	Other Conservation	Effective DCP Cropland	Double Cropped	MPL/FWP		
0.0	0.0	57.7	0.28	0.0		

Crop	Base Acreage	CTAP Tran Yield	PLC Yield	CCC-505 CRP Reduction
WHEAT	16.38		42	0.0
SOYBEANS	0.1		31	0.0
Total Base Acres:	16.48			

Owners: RACINE, SUSIE
Other Producers: ENDERLE INC



**All Measurements are
For FSA Programs Only**

Chariton Co. FSA

1:7,920



Wetland Determination Identifiers

- Restricted Use
- ▼ Limited Restrictions
- Exempt from Conservation Compliance Provisions

Disclaimer: Wetland identifiers do not represent the size, shape or specific determination of the area. Refer to your original determination (CPA-026 and attached maps) for exact wetland boundaries and determinations, or contact NRCS.

- DC = Double Crop
- C = Corn - Yel - GR
- SB = Soybn - Com - GR
- Milo = Sorgh - GRS - GR
- Wht = Wheat - SRW - GR
- Hay = MIXFG - LGM - FG
- P - MIXFG - LGM - GZ
- LS - MIXFG - LGM - LS
- *Unless notated on Map

Program Year: 2019
Created: 5/14/2019
Flown: 2016-06-22

- clu
- crp
- plss

**Farm 5813
Tract 7674**

Missouri
Chariton

U.S. Department of Agriculture
Farm Service Agency

Prepared: 8/8/19 9:07 AM
Crop Year: 2019

Report ID: FSA-156EZ

Abbreviated 156 Farm Record

Page: 4 of 6

DISCLAIMER: This is data extracted from the web farm database. Because of potential messaging failures in MIDAS, this data is not guaranteed to be an accurate and complete representation of data contained in the MIDAS system, which is the system of record for Farm Records.

Tract Number: 7674 Description P12/2B S9 16 21 T53N R16W

FSA Physical Location : Chariton, MO ANSI Physical Location: Chariton, MO

BIA Range Unit Number:

HEL Status: HEL: conservation system is being actively applied

Wetland Status: Wetland determinations not complete

WL Violations: None

Farmland	Cropland	DCP Cropland	WBP	WRP/EWP	CRP Cropland	GRP
40.44	29.23	29.23	0.0	0.0	0.0	0.0
State Conservation	Other Conservation	Effective DCP Cropland	Double Cropped	MPL/FWP		
0.0	0.0	29.23	0.5	0.0		

Crop	Base Acreage	CTAP Tran Yield	PLC Yield	CCC-505 CRP Reduction
WHEAT	4.3		42	0.0
CORN	11.9		106	0.0
SOYBEANS	13.5		31	0.0
Total Base Acres:	29.7			

Owners: RACINE, SUSIE
Other Producers: ENDERLE INC

Tract Number: 8585 Description S20 T54 R18

FSA Physical Location : Chariton, MO ANSI Physical Location: Chariton, MO

BIA Range Unit Number:

HEL Status: HEL: conservation system is being actively applied

Wetland Status: Wetland determinations not complete

WL Violations: None

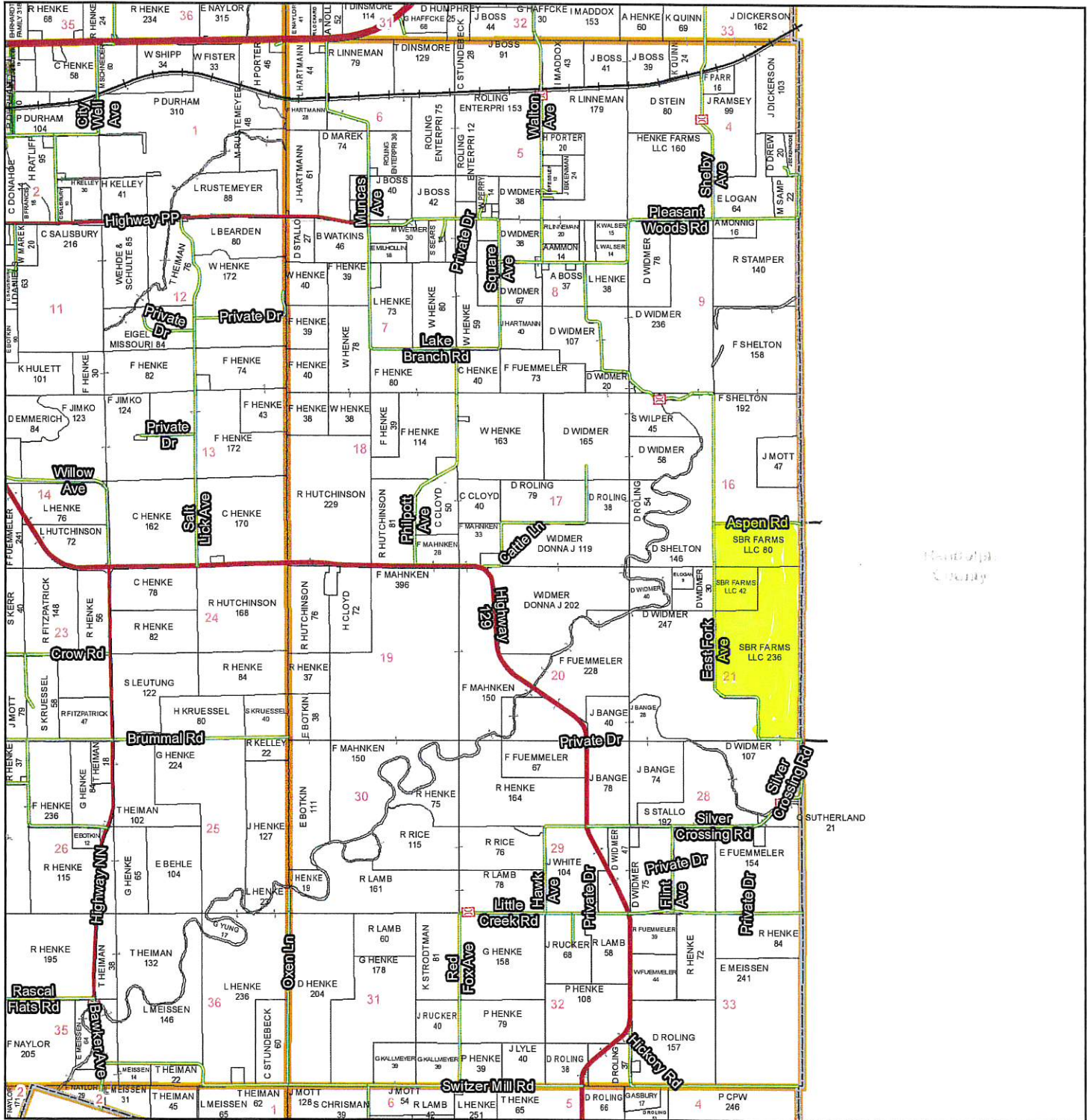
Farmland	Cropland	DCP Cropland	WBP	WRP/EWP	CRP Cropland	GRP
78.62	72.94	72.94	0.0	0.0	0.0	0.0
State Conservation	Other Conservation	Effective DCP Cropland	Double Cropped	MPL/FWP		
0.0	0.0	72.94	0.0	0.0		

Crop	Base Acreage	CTAP Tran Yield	PLC Yield	CCC-505 CRP Reduction
SOYBEANS	71.9		31	0.0
Total Base Acres:	71.9			

Owners: RACINE, SUSIE
Other Producers: ENDERLE INC

T53N - R16W

See Page 45



See Page 65

Chariton County Commission
 Tony McCollum - Presiding Commissioner
 Danny Price - Western District Commissioner
 Steve Atkinson - Eastern District Commissioner

This data was primarily developed for tax purposes and is not considered survey accurate.

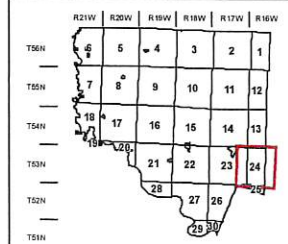
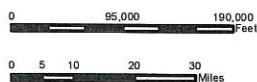
Data Courtesy Chariton County Geographic Information System
 Darrin Gladbach - Assessor

Most parcels > 10 ac labeled

GIS & Map Development By:

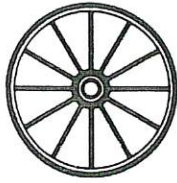


www.midlandgis.com



Legend

- City Limits
- Township-Range
- Sections
- Land Grant
- Political Township
- Land Ownership
- Subdivisions
- Conservation & US
- US Highways
- ST Highways
- CO Highways
- Streets
- Rail Roads
- Streams
- Land Hooks
- Bridges



BANK MIDWEST N.A.

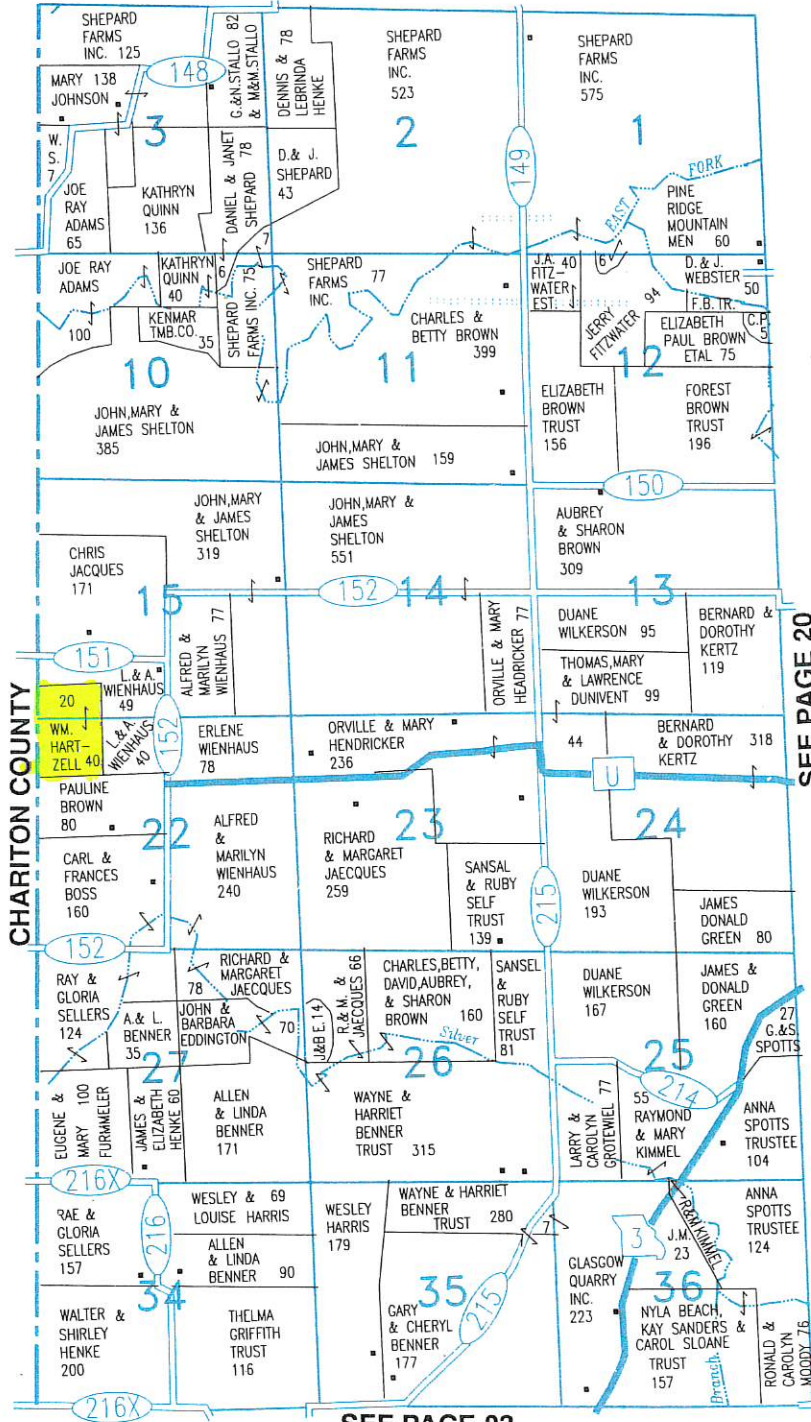
420 N. Morley
Moberly, Missouri 65270

(816) 263-6633
Fax (816) 263-1453

Member F.D.I.C

TOWNSHIP 53N • RANGE 16N

SEE PAGE 15



SEE PAGE 23