

Montana Fall Gatherin' Auction

Western Art & Gear, Indian Artifacts, Firearms & Knives, Jewelry, Silver Coins, Antiques & Collectibles

Friday, October 25th - 6 P.M.
Saturday, October 26th - 10 A.M.
Trade Center - Fairgrounds • Lewistown, MT

Live Auction with Live Internet Bidding @ www.ShobeAuction.com



C. R. Cheek - *The Sod Cabin* C. R. Cheek - *Winter Cabin*



Rem 700 DU, .30-06



Oneida Newhouse #15



Heart Spurs



Canon City Prison



Oak China Cabinet



Earl Heikka



Mother of Pearl Opera Glasses - 2 of 10



Beaded Gauntlets



Abby Hunt



L. D. Stone



Mike Morales



Victor Ario



Hopi



Buffalo Vertebrae



Hank Chopwood



Jay Contway



George Northrup



Fred Fellows



Win. Model 70 Classic SM Boss, .270



Les Peters - *The Colt* Cuts The Rope - *Camp Creek Pass*

ORIGINAL WESTERN ART

Cheek, C. R., oil on board, *Winter Moon*, 18" x 24"
 Cheek, C. R., oil on board, *Winter Cabin*, 18" x 20"
 Cheek, C. R., oil on board, *Untitled*, 8" x 12"
 Cheek, C. R., oil on canvas, *The Sod Cabin*, 8" x 10"
 Cheek, C. R., oil on canvas, *Montana Grizzly*, 8" x 10"
 Cheek, C. R., oil on canvas, *Prairie Pronghorn*, 8" x 10"
 Bailey, Ron, oil on board, *Beaver Camp*, 16" x 20"
 Cuts The Rope, Clarence, oil on canvas, *Camp Creek Pass*, 24" x 48", outstanding piece

Cuts The Rope, Clarence, oil on canvas, *Mallards Rising*, 1984, 12" x 16"
 Cuts The Rope, Clarence, pen/ink, *Saddle Bronc Champion*, 1972, 12" x 18"
 Cuts The Rope, Clarence, pen/ink, *Bareback Bronc Champion*, 1972, 12" x 18"
 Cuts The Rope, Clarence, pen/ink, *Look Out Point*, 1972, 12" x 18"
 Cuts The Rope, Clarence, pen/ink, *Log Cabin Saloon, Poplar, MT*, 1972, 12" x 18"
 Cuts The Rope, Clarence, pen/ink, 3 indian portraits, 1995, 12" x 16"
 Cuts The Rope, Clarence, pen/ink, *Eagle*, 1979, 18" x 24"
 Cuts The Rope, Frank pencil sketch, unsigned, 20" x 14"
 Contway, Jay, pen/ink, *Running Wild Horses*, 8" x 10", unframed
 East, Barbara, (Colorado), original pen/ink, 11" x 9.5"
 Farrar, Burton (Great Falls, MT), oil on canvas, 11" x 14"
 Fellows, Fred, CAA, original pen/ink, *Wagon Master*, 8.5" x 11"
 Hall, Bob, pen/ink, *Elk*, 12" x 18"
 Hines, Jack (Big Timber, MT), watercolor, 12" x 16"
 Knerr, Floyd, original pencil, *Cool Water*, 12" x 24"
 Lockman, Kim, *The Tall and the Short of It*
 Michael, Judy, acrylic, *Whitetails*, 4" x 8"
 Michael, Judy, acrylic, *Livery & Feed Barn*, 3D, 8" x 10"
 Mimnaugh, Terry (Great Falls, MT), watercolor, *Rooster*, 9" x 13"
 Nelson, Mitzi, watercolor, *A Great Rope Horse*, 5.5" x 8.5"
 Peters, Les, oil on board, *Buck Mule Deer*, 5" x 7"
 Peters, Les, oil on board, *The Colt*, 7" x 5"
 Rains, William (Billings, MT), watercolor, *Indian Chief*, 12" x 14", 1978
 Sander, Tom, *Buffalo*, watercolor, 12.5" x 8.5"
 Sander, Tom, watercolor, *Indian Portrait*, 7" x 9.5"
 Sander, Tom, watercolor, *Fall Pheasants*, 15.5" x 10"

SCULPTURES

Spurgeon, Carol (Great Falls, MT), watercolor, *The Armington Barn*, 10.5" x 20.5"
 Sutherland, Ross (Great Falls, MT), oil on canvas, *Freeze Out Lake*, 16" x 20"
 Zivic, William, charcoal, *Many Tail Feathers*, 18" x 24"
 Zivic, William, charcoal, *Billy Two Rocks*, 18" x 24"
 Leedy, Jeff, pastel, 16" x 22", 1999

Contway, Jay, bronze, *Buffalo Skull*, 1981, 1/20
 Fellows, Fred, CAA, bronze, *Owl & Buffalo Skull*, 5" x 5" x 5", 24/100
 Heikka, Earl, bronze, *Horse*, 14" w x 12" h, 18/30
 Jones, Dennis (Joseph, OR), bronze, *Where Horses Can't Go*, 44/50, 17" h x 11" w
 Lemon, David (McAllister, MT), bronze, *Curley Crow Scout*, 19" t x 14" w x 11" d
 Mene, D. J., bronze, *Scotchman With His Dogs*, 19" h x 13" w
 Northrup, George (Wyoming), bronze, *Bull Moose*, 16" h x 29" w, 12/28
 Remington, Frederic, recast bronze, *Bronc Buster*, 15" w x 2" l h
 Sander, Tom, bronze, 2 *Fox*, 5/50, 8" H x 6.5" w
 Wentworth, George, bronze, *Chief Joseph*, 1/30, 7.5" h x 4" w x 3" d
 Dwyer, Anna, sculpture, *Mustang*, 13/50, 9" tall x 9.5" l x 2.5" w
 Dwyer, Anna, sculpture, *Eilly*, 2/25, 6.5" t x 4.5" l x 2.5" w
 Logozzo, Jack, resin sculpture, *Generations, The Bugling Lesson*, Edition of 500, NRA, 11" h x 10" w
 Chopwood, Hank, original sand sculpture, *Buffalo Bill Cody*
 Wood, D. B., sandstone sculpture, *Indian Carrying Bundle*, 12" h
 Wood, D. B., sandstone sculpture, *Indian with Buffalo*, 10" h
 Wood, D. B., sandstone sculpture, *Woman With Papoose*, 10" h

WESTERN GEAR

E. J. Owenhouse Montana Territory saddle, Sam Staggy rigged, Cheyenne roll seat, half seat style, all original
 Al Furstnow full carved saddle, square skirts, Furstnow Catalog #115, very high condition
 Ray Holes (Grangeville, Idaho) silver mtd saddle, fancy flower tooled w/matching silver mtd bridle & breast collar. *Fabulous set.*
 Ray Holes (Grangeville, Idaho) saddle, horsehead carving on fenders, ca 1943

KB & P dble silver mtd spurs, orig. 16 pt. rowels, marked below heart button. *Nice pair of spurs.*
 Heart spurs, unknown maker, 20 hearts on each spur, mountings are gold, bronze and nickel silver. *Rare!*
 Canon City, Colorado prison-made spurs, 15 pt. rowels
 Fleming engraved stainless steel spurs
 Lady leg blacksmith-made spurs w/steer heads on bands, from ranch on Upper Rosebud Creek, MT
 L. J. Church large silver double mtd spurs
 Gus Goldberg silver mtd bit, marked J. E. (Juan Estrada), Sacramento, CA. Barqueno mouthpiece, ca. 1930
 L. D. Stone silver mtd early spade bit, San Francisco on back of mouth piece, ca 1890, marked
 Abby Hunt silver mtd S-shank bit, half breed, ca 1930, unmarked
 Mike Morales, Santa Barbara silver mtd spade bit, ca 1930, unmarked
 Mike Morales, Santa Barbara silver mtd S-shank half breed bit, ca 1930, unmarked
 California silver mtd spade bit, unknown maker, ca. 1880's -1890's
 Buermann zinc coated bit for horsehair bridle
 Bits & Spur Makers in *The Texas Tradition*, Ned & Jody Martin, 2001, 1st, dj, near fine
 Bits & Spur Makers in *The Vaquero Tradition*, Ned & Jody Martin, 1997, 1st, dj, near fine, signed
 Bit & Spur Motif & Techniques and *Modern Makers*, Ned & Jody Martin, 2003, dj, near fine
 Miles City Saddlery double-ear bridle, marked
 Heiser, Denver fancy studded bridle, marked
 Harpham Bros, Nebraska bridle, marked
 Hitched horsehair round braided bridle
 Clark (Pendleton, OR) black woolie chaps, nice!
 Heiser, Denver batwing chaps
 US Cavalry Leather Saddle Bags, WWI Era
 A. J. Davidson holster & cartridge belt, Helena, M.T.
 Victor Ario gun belt and holster
 F. A. Meane, Cheyenne, WY, leather shaving box, 9" x 3", bull dog tapperos, leather covered stirrups, webbed saddle cinch, all marked.
 Colorado Saddlery rifle scabbard
 Eubanks Saddlery rifle scabbard, buck stitched
 Beaded double loop holster
 Douglas, WY chaps; Cowboy bed roll, 72" x 72"

Rawhide riata, 36' & 8' bull whip
 Buffalo tanned rug with tail, ca 1880's
 Saddle blanket, ca 1920's; Cowboy possible bag, 6" x 11"
 Braided leather quirt, 23"; Leather bull whip, 82"
 Rodeo Sports News Annual Editions, 1955-2017
 Repro. saddle catalogs, M.Morales, Edward H
 Hooked rug w/bucking horse and rider
 Oneida Newhouse #15 bear trap, with teeth, appears complete
 Oneida Newhouse #50 bear trap, pan cut off
 Newhouse #4
 (2) Newhouse #1
 (2) Triumph #3 triple clutch kangaroo
 Triumph #6
 Victor #3 jump trap, double trap
 Bigelow rd. spring trap, racoons, mink, rabbits. Bigelow Trap Co, Ohio. 5 1/2" diameter", ca.1960

INDIAN ARTIFACTS & COLLECTIBLES

(10) Riker trays of stone points, all Montana. Over 300 total pieces from Basket Ellis Ranch, Choteau; Shaw Butte Trap, Fort Shaw; McBride Trap, Simms; Dago Hill, Fort Shaw; Sun River Drainage. See online catalog for detailed descriptions.
 Navajo Eye Dazzler weaving, 44" x 69", Chinle Trading Post (Pre-dates Chinle Revival). Egetal Dye-Orange Mtn. Maghog Root, good, clean condition
 Navajo storm pattern weaving, pre-war

Navajo blanket, Ganado style, 35" x 54"
 Hopi Indian woven grass basket, 6 3/4", excellent condition. Bought on Hopi Reservation in 1910.
 Steel arrow head inbedded in buffalo vertebrae
 Fancy beaded gauntlets w/stars, ca 1930's
 Elk horn hide scraper, 14"; Porcupine hair brush, 11"
 Big Horn sheep horn spoon, 15"; Skull cracker tomahawk, 35"
 Beaded drum stick, 18"; Bladder rattle, 14"
 Horse head catlinite peace pipe; (2) bows, 33" and 36"
 Indian tomahawk, hitched horsehair and bead trim
 Lewis and Clark era trade beads
 (2) strings Chumash handmade stone & shell beads, Channel Islands, CA
 Indian arrow head points, 12 pcs, San Louis area, Alamosa, CO
 Arrow head points, 15 pcs, Willamette River, Western OR

FIREARMS, KNIVES & BINOCULARS

H & R Model 65 WWII M1 Training rifle, semi-auto, .22LR, sn 991
 Winchester Model 70 Classic SM Boss, .270 Win., pre-64 action, new in box, sn 75827
 SigSauer 716, .308 cal., 2 -10 rd clips, sn 226001787, soft side case
 Rem 700 DU, .30-06, unfired, Leopold 4X scope, sn 0233DU1985, in box
 Sig Sauer P227, .45 ACP, new unfired, sn 51A000220, hard case
 Blunderbus, 53" barrel, 68" total length
 Daisy Powerline 35 BB Gun
 Military field binoculars, WWI, 7" h x 4 1/2" w
 Lemaire binoculars, 1895-1905, 6" h x 5" w
 German made binoculars, 6" h x 5" w
 Busch Special binoculars, 1895-1905, 5 1/2" x 5" w
 (2) Field binoculars, 7" high x 5" w, French-made, ca 1900
 Original Bowie Knife, marked, .8" blade, chip on hdl.
 Old rawhide snow shoes, 28" x 14"
 Deer foot handled letter opener w/sheath
 Schrade knife, fixed blade
 Case XX USA59L SS folding knife w/sheath
 Case XX SS 523 3 1/4" knife w/sheath
 Western pearl handled pocket knife
 Bob Gordon Bait Knife, ca 1920's
 LeMann Black Hills Gold men's wrist watch, new in case

Ornate Japanese sword w/sheath, 26" blade, marked "2600th Year of the Imperial reign" (1940)
 Wood MKV duck call & wood Faulks CH44 goose call
 Unmarked wooden duck call & Lohman gold series duck call
 Snow goose wall mount; Antelope shoulder mount; Buffalo hide
 Deer foot knife, Czech. made; Pheasant rooster, full mount

SILVER COINS

24 Morgan Silver Dollars, all nice coins, see online catalog for photos. None are slabbled.
 1878-P, AU; 1878-S, MS 60; 1878-CC, AU
 1879-P, MS 60; 1879-O, AU; 1879-S, AU; 1879-CC, VF
 1880-P, MS 60; 1880-O, AU; 1880-S, MS 60; 1880-CC, MS 60
 1881-P, MS 60; 1881-O, MS 60; 1881-S, AU; 1881-CC, MS 63
 1882-P, MS 60; 1882-O, MS 60; 1882-S, MS 60; 1882-CC, MS 60
 1883-P, MS 60; 1883-O, MS 60; 1883-CC, AU; 1883-S, AU
 1884-P, MS 60; 1884-O, MS 60
 Australian silver 1 oz. Kookoobura, .99 pure

JEWELRY

Yogo Sapphire ladies ring, .33 ct round brilliant Yogo and 13 diamonds in 14kt white gold setting. Size: From Rogers Jewelry, Lewistown, MT ca. 1960's.
 Yogo Sapphire pendant, .35 ct pear cut, sterling silver setting
 Yogo Sapphire pear pendant, sterling setting, 4 mm x 5 mm
 Yogo Sapphire ladies ring, 3 Yogos, 2 diamonds, 14kt yellow gold, size 3 1/2
 Yogo Sapphire ladies ring, .30 ct, size 8 3/4
 Yogo Sapphire ladies heart ring, .45 tcwt, 14 kt yellow gold, size 7
 Ladies diamond ring, .30 ct in 14 kt white gold
 Large ladies turquoise bracelet; Turquoise and ivory bracelet
 Turquoise in sterling silver bracelet, marked FG
 (2) Turquoise sterling silver necklaces, one marked GG, one w/out chain
 Turquoise and sterling silver squash blossom
 Turquoise and sterling silver beaded necklace
 Vintage ladies ring, 6 diamonds, 3 rubies in 18 kt gold setting
 Blood stone ring in 10 kt gold setting
 Sterling silver charm bracelet; Turquoise necklance

FURNITURE

Fancy oak curved and leaded glass china cabinet, 74" h x 48" w x 19" d, beautiful piece. One of the nicest cabinets we've ever sold.

BOOKS, WESTERN & WILDLIFE PRINTS

Will James memorabilia including map of his ranch, Pryor, MT, photo album, scrap books, unsigned sketches, many open edition prints, bill for his funeral, signed & canceled checks. To be sold in several lots.
 Bateman, Robert, signed print, *Merv Dusk-Lesser Kudu*, 14" x 18", 404/500
 Carter, Gary, signed print, *Bachelor Quarters*, 18" x 36", 177/850
 (4) Cheek, C. R. Christmas card pen/ink prints, signed, 8" x 6", framed
 Cheek, C. R., portfolio of bronze sculptures
 Contway, Jay, print, *Gros Venture Warriors*, 16" x 24"
 Devenyns, Steve, signed giclee print, *Mutual Admiration*, 18" x 24"
 Huffman, L. A. photo print, *Siebers Cabin*, 1901
 Lockman, Kim, giclee on paper, *Reflections*
 Doolittle, Bev, signed print, *Sacred Ground*, 12" h x 39" w, 45475/69996, framed
 Garrison, Webb, print, *Quail on Post/Barbed Wire*, 170/200, 11" x 13.5"
 Glazier, Nancy, canvas print, *Restless*, 56/195
 Grimm, Adam, *Mallard Duck w/ stamp*, 11310/12500,
 Hintermeister, Henry, print, *Savage Firearm Advertising*, 25"x17"
 Jeppsen, Julie, giclee, *Perfect Point*, 12" x 18"
 Plasschaert, *The Giant Canada Goose w/1983 stamp*, 684/750, 7.5" x 10"
 Pickthorn, A. Nadine, print, *Return to Sand Arroyo*, AP 41/50, 24" x 14"
 Pickthorn, A. Nadine, print, *Born to Run*, AP 4/50, 25"x8.5"
 Pickthorn, A. Nadine, print, *Risky Behavior*, AP 1/10, 32"x13.5"
 Pickthorn, A. Nadine, print, *Stepping Out*, AP 3/50, 11"x 15"
 Powell, Ace, pen/ink print, *3 Indians on Horses*, 21" x 17"
 Redlin, Terry, print of pencil, *Hunter's Haven*, 12" x 16"
 Reiss, Winold, print, *Drummers-Glacier Nat. Park*, 15.5" x 23.5"

Continued on the back

Bid Live on the Internet @ www.ShobeAuction.com

United Country Auction Services
 SHOBE AUCTION & REALTY
 No One Knows The Country Like We Do
 www.ShobeAuction.com

JAYSON & KYLE SHOBE AUCTIONEERS & REALTORS
 408 WEST MAIN, LEWISTOWN, MT 59457
 OFFICE: 406-538-5125
 Jayson: 406-366-5125
 e-mail: jayson@shobeauaction.com
 Kyle: 406-366-0472
 e-mail: kyle@shobeauaction.com

Auction Preview: Friday starting at 1 P.M. & Saturday starting at 8 A.M.

We invite you to our annual Fall Gatherin' Auction, held right in the heart of Montana! This year's auction offering includes a wide array of merchandise from a number of private collections around Montana, Wyoming, South Dakota and Washington.

This year's **Western Art** lineup is exceptional with works from some of Montana's most renowned artists, including C.R. Cheek (1937-2019), Les Peters (1917-2010), Clarence Cuts The Rope (1935-2000), Jack Hines (1923-2015), Earl Heikka (1910-1941), Jay Contway, Tom Sander, Ron Bailey and a number of others.

Yogo Gulch, located an hour west of Lewistown, is home to one of the world's largest known sapphire deposits. **Yogo Sapphires** can only be found in the mine near Utica and their unique color and exceptional clarity makes them the most precious gemstones ever to be mined in the U.S. Unlike most other sapphires, which must undergo heat treatment to be rid of impurities, Yogos are naturally almost flawless. In the controversial matter of heat treatment, no sapphires in the world can challenge the quality of the Montana sapphires from the Yogo dike. Six auction lots feature Yogo Sapphires in settings of rings and pendants.

The **Western Gear** category of this auction features a dandy lineup of spurs, bits and saddles. Gus Goldberg (1872-1942) worked as a saddle maker for Main & Winchester before opening his own saddlery, known simply as Goldberg Saddlery. During this time Goldberg employed Juan (John) Estrada as his bit and spur maker, and realizing the importance of having an in-house bit and spur maker, allowed Estrada to add his own mark to his works. The Goldberg bit featured in this auction is marked "Gus Goldberg, Sacramento, California, J. E." Also look for the Parker & Kelly Brothers spurs (marked KB & P) and saddles carrying the Al Furstnow (Miles City) and E.J. Owenhouse (Bozeman, Montana Territory) makers marks.

The Sun River Valley near Great Falls is scattered with buffalo jumps and kill sites from the land's **Native American** past. Over 300 points found throughout the Sun River area are organized into ten trays from a private collector who individually scouted and gathered each piece himself. Several Navajo Weavings are also a part of the auction.

We will begin selling non-cataloged lots on Friday evening and start into the catalog at 10:00 Saturday morning. Plan a little Lewistown overnight getaway and join us on October 25th & 26th!

Sayon & Kife Sticks

AUCTION SCHEDULE

Friday, 6:00 P.M. - Framed Prints, Misc. Books, Antiques & Collectibles
 Saturday, 10:00 A.M. - Selling in Catalog Order. Visit our website for Catalog.

TERMS

15% Buyer's Premium. Cash, check or credit card day of auction. If paying with a credit card, buyer's premium is 18%. Separate terms apply for online bidding; see website for details. All FFL regulations will be complied with.

LUNCH

Concessions will be available at the sale

LODGING IN LEWISTOWN

Calvert Hotel - 877-371-5411
 Yogo Inn - 406-535-8721
 B & B Motel - 406-535-5496
 Judith Mountain Lodge - 406-538-7063
 Super 8 by Wyndham - 406-538-2581

RESTAURANTS IN LEWISTOWN

Central Feed Grilling Co., Big Spring Brewery - 220 E. Main
 Harry's Place - 631 E. Main
 Elks Bar & Restaurant - 320 Country Club Lane
 Mint Bar & Grill - 113 4th Ave. S
 Stetson's Restaurant, Yogo Inn - 211 E. Main
 Brooks Market - 104 2nd Ave. S
 Little Big Men Pizza - 630 NE Main
 Doc's Sports Bar & Grill - 1660 W. Main
 Judith Mountain Lodge - 6300 Lime Kiln Rd



Bev Doolittle - Sacred Ground



Judy Michael - Livery & Feed Barn



Gary Carter - Bachelor Quarters



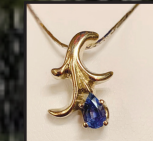
Sig Sauer P227, .45 ACP



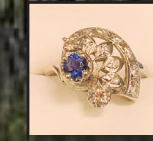
H & R Model 65 WWII M1 Training Rifle, .22LR



Turquoise Squash Blossom



Yogo Sapphire Pendant



Yogo Sapphire & Diamonds Ring



Hereford Bull Bank



South Dakota Prison



Heiser



Sun River Drainage Indian Points



Ivory Chess Set



Oak Ash Bucket



1881 P Morgan



1880 S Morgan



1880 P Morgan



1879 P Morgan



1878 CC Morgan



1879 S Morgan



408 West Main St.
 Lewistown, MT 59457
 Office: 406-538-5125

2019 Montana Fall Gatherin' Auction

FIRST CLASS
 AUTO
 US POSTAGE
 PAID
 LEWISTOWN, MT
 PERMIT 181

Friday, October 25th & Saturday, October 26th • Fairgrounds • Lewistown, MT

BOOKS, WESTERN & WILDLIFE PRINTS CONT'D

Remington, Frederic, 4 colored lithos/aged folio, Artist's Proof, all 12.5" x 8.5"
 Sander, Tom, print, *Fox*, 397/1000, 27"x14"
 Osthaus, Edmund, colored litho, *First Lesson*, 1919 (2) Seltzer, O. C. prints (authenticated by W. Steven Seltzer)
 Russell, Charles M. *Rawhide Rawlings*, 1st ed.
 Hassrick, Peter, *The Frederic Remington Book*, dj, near fine
 Renner, Frederic, *The Charles M. Russell Book*, dj, near fine
 Rutherford, Michael, *The American Cowboy*, dj, 1st, near fine
 Ryan, Kathleen, *Ranching Traditions Photo Book*, dj, 1st, near fine
 Abbott, Robert, *Setter/Pointer*, 864/3900, 1985 Stamp, 9"x7"

Gromme, Owen, *Quail in Snow*, 3817/3900, 1983 Stamp, 9"x6.5"
 Plasschaert, Robert, *3 Quail*, 1294/1500, 1983 Stamp, 9"x6.5"
 Reece, Maynard, *3 Quail in Flight*, 3312/3900, 1984 Stamp, 9"x6.5"
 Chapple, Dave, *3 Quail-Fence Post*, 1294/1500, 1987 Stamp, 9"x6.5"
 Maass, David, *6 Quail at Water*, 60/3900, 1986 Stamp, 9"x6.5"

Winchester Time, Joseph 15" w x 12" h
 Clausen, P., signed print, *New Tennant*, 15" x 20" w, 22/50
 Greytak, Don, signed print, 10" x 14", 275/500
NRA Declaration of Independence on parchment, 24" x 34", 68/1100
Winchester Repeating Arms Ammo print, 32" x 48", framed
 Annie Oakley portrait print with original bullet, 12" h x 17" w, 334/1130
 Mansanarez, Tom, signed print, *Bull In the Willows*, 18" x 21", 211/500
 Killen, James, signed print, *Morning Marsh Pintails*, 18" x 28", 1884/3200
 Roderick, Jeff, signed print, *California Green Wings*, 11" x 15", 248/1000
 Steiner, R., signed print, *Ducks Aflight*, 12" x 12", 199/200

Russell, Sherrie, signed print, 1999, 2/50
 Sieve, Michael, signed print, *3 Deer*, 1991, 18" x 29", 803/950
 Stewart, Rick, *Charles M. Russell Sculptor Book*, 1994, 1st, like new
 Mangelson, *Bald Eagle*, 1985, photograph, 19" x 15.5"
 Muss-Arnolt, *Peters Advertising*, advertising art, 14"x21"
 Snell, Alan, *Square Butte*, print, 154/350, 31"x 11
 Sprunger, Elmer, *Garlen Wall*, print, 119/1000, Steffen, Ross, *Splendor of Shade*, print, AP 5/20
 Vintage Fort Benton, MT panoramic photo
 (4) Zivic, William prints, all 6" x 9", framed
 Assorted C. M. Russell prints, framed

STONEWARE

RW 2 gal. crock w/lid, small chip
 (2) RW 3 gal. crocks, no chips
 RW 6 gal. crock, no chips
 Wesson Oil crock

COLLECTIBLES

Arcade cast iron Co-op tractor w/rubber tires, 5.5"x 3"
 Arcade cast iron mower, corn planter, 2 bottom plow
 Mighty Midget salesman sample cook range, 12" h x 12" w
 (10) pair opera glasses, all Mother of Pearl, 1890's, several from France
 Ivory chess set, 32 pcs, NIB, Hang On Ivory Factory, Hong Kong
 1800's Hayden brass trade bucket
 Vintage Brady leather shot shell bag, like new
 3-piece wooden shotgun cleaning rod
 WW1 US Army regulation brass whistle
 Heavy unmarked brass bell w/mounting hardware
 Grassmayr brass bell w/wood handle
 Vintage fancy quarter-sawn oak ash bucket w/ insert, brass handles
 Copper boiler w/wooden handles & lid
 Vintage Star pattern necklace (sea urchin) yellow beads & seeds
 Pintail duck wood decoy, NRA, #1049
 Wooden coffee grinder, arm in trosser
 Rogers Silver plated pitcher, 12" h
 Wood carved bowl and tray
 Benalli, W. sand script vase, 6" h

Penn Hardware Co. tobacco cutter
 (4) petrified dinosaur bones
 William Henry Jackson's Rocky Mountain RR Album
 Steer horns mtd on board, 26"
 Dexter chef's knife, 14" blade
 (10) brass harness bells, 1 1/4" to 3"
 (5) strings sleigh bells, 1 1/2" to 3"
 Carved cedar mother duck and duckling
 Sutherland China-made in England, cups/sauces/serving plate
 Royal Staffordshire bone china, sugar & creamer
 Salisbury Crown China, made in England, 4 cups/saucers
 Blue Star plates, 1971-1977 w/list
 (2) Iraq paper currency, 250 dinars
 Pearl handled sterling silver set
 Green depression cake stand
 Jelly dish w/silver tray, Crystal butter dish
 Silver thimble jigger in case, pre 1900's
 Brass horse, lighted
 1922 MT State Prison inmate booking sheet
 1923 Silver Certificate, owner tried to pass it off as a \$20 at Liberty Theater, Great Falls. Sheriff caught him.
 Horse collar hames with brass balls
 Ivory celluloid dresser set
 Tyndale painted rose covered candy dish & cigarette box
 Western Clock Mfg. small mantle clock, working, metal case
 Buffalo skull, modern Vintage steamer trunk
 Blue Willow china set, service for 12
 Bob Gordon's office chair, Sheriff of Cascade County 1918
 Mahogany dining table w/1 leaf
 Hamm's Beer lighted sign, works
 Rainier Beer lighted sign; Michelob Light sign
 Indian Chief cast iron bank, early 1900's, Germany
 Hereford bull coin bank, composition, 15" w x 8" h
 Big Smith bib overalls, ca 1950's, 36" waist, 32" inseam, never worn
 Big Mac denim overalls, ca 1950's, 36" waist, 32" inseam, never worn
 Planters Peanut cookie jar, mint

Montana Fall Gatherin' Auction

Western Art & Gear, Indian Artifacts, Firearms & Knives, Silver Coins, Antiques & Collectibles

Friday, October 25th - 6 P.M.
 Saturday, October 26th - 10 A.M.
 Trade Center - Fairgrounds • Lewistown, MT

Auction Preview: Friday starting at 1 P.M. & Saturday starting at 8 A.M.
 Live Auction with Live Internet Bidding @ www.ShobeAuction.com



Cuts the Rope - Mallard Landing



Gus Goldberg (Juan Estrada)



KB & P



C. R. Cheek - Winter Moon



Jack Hines original



Jay Contway/Pen & Ink



Ron Bailey - Beaver Camp



Dago Hill



Basket Ellis Ranch



Shaw Butte Trap

www.ShobeAuction.com • 406-538-5125

