



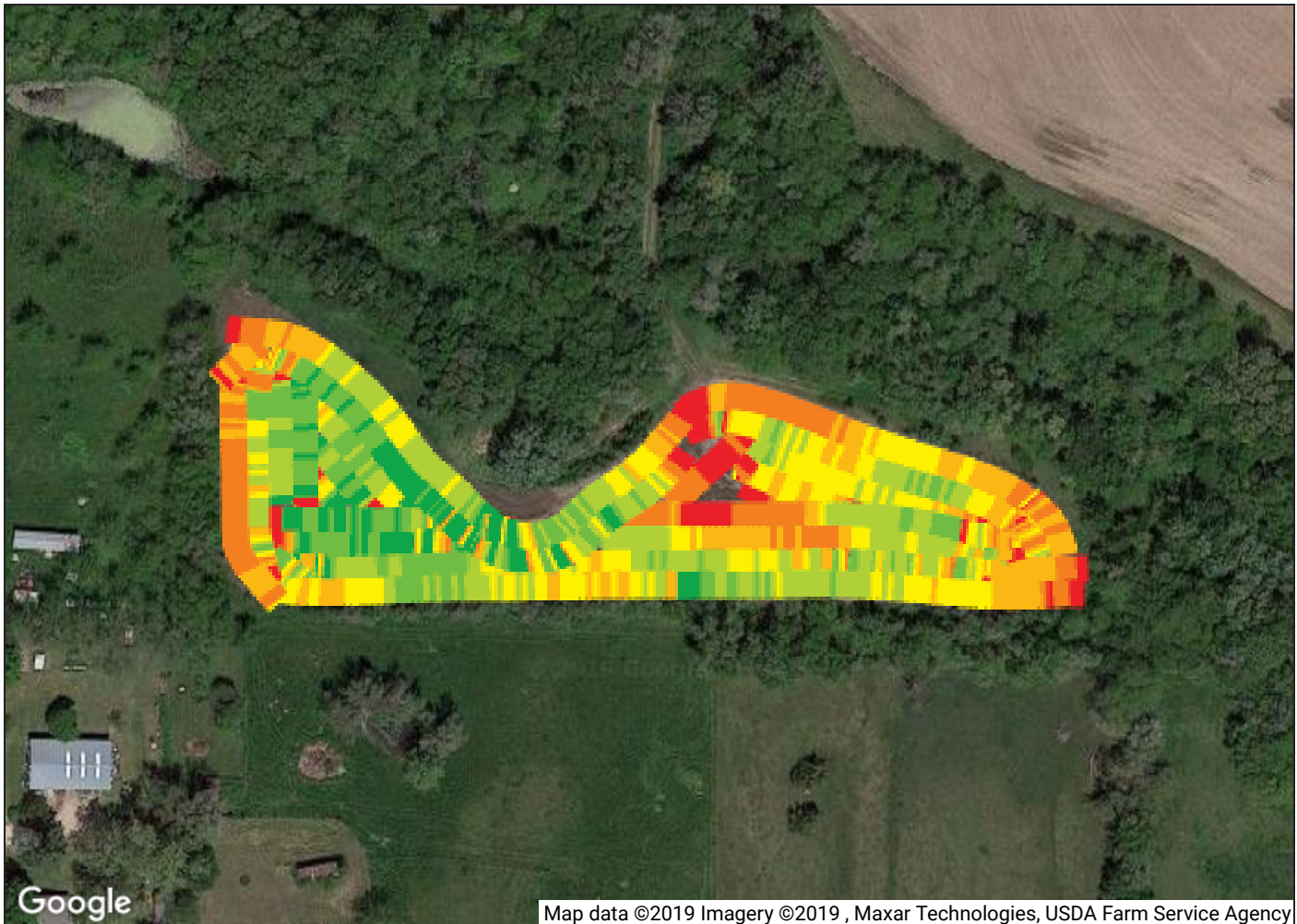
Operations Center

2019 Corn: Harvest

Layer: Dry Yield

WEST

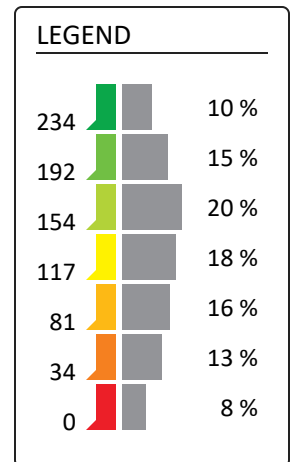
Patterson; Ron | FILLMORE



Map data ©2019 Imagery ©2019, Maxar Technologies, USDA Farm Service Agency

Operation Dates: 10/27/2019 - 10/27/2019

AGRONOMIC DATA	
TOTAL DRY YIELD	AVG. WET WEIGHT
322.16 bu	8,189.19 lb/ac
AVG. DRY YIELD	
140.07 bu/ac	
AVG. MSTR	
17.7 %	
AVG. SPEED	
2.78 mi/h	
AREA WORKED	
2.3 ac	
WET WEIGHT	
18,835.13 lb	



Copyright © 2011-2019 Deere & Company. All rights reserved.