

RETRACEMENT SURVEY FOR KATE DOWELL EST. PERRY TRACT

**TOTAL AREA
41.552 ACRES**

CALLS WITH TRACT 1

NUM	BEARING	DISTANCE
L1	N7°19'39"E	29.70'
L2	N52°10'22"W	41.25'
L3	N7°49'43"E	46.20'

NUM	ARC	RADIUS	BEARING	DISTANCE
C1	364.85'	1975.00'	S78°04'21"E	364.33'

CALLS WITH TRACT 2

NUM	BEARING	DISTANCE
L1	S70°44'50"E	179.02'
L2	S67°36'17"E	205.57'
L3	N78°34'24"W	141.75'

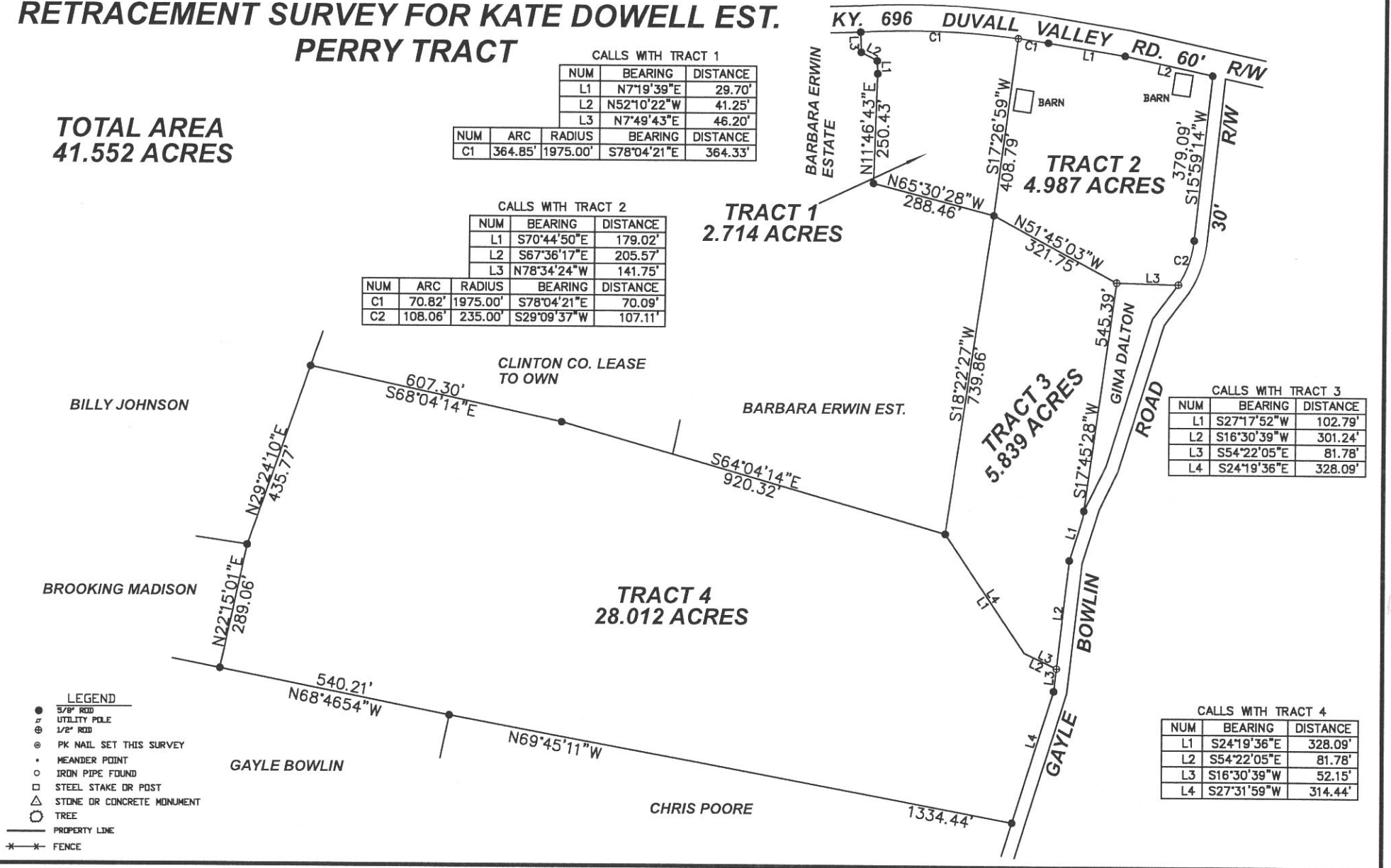
NUM	ARC	RADIUS	BEARING	DISTANCE
C1	70.82'	1975.00'	S78°04'21"E	70.09'
C2	108.06'	235.00'	S29°09'37"W	107.11'

CALLS WITH TRACT 3

NUM	BEARING	DISTANCE
L1	S27°17'52"W	102.79'
L2	S16°30'39"W	301.24'
L3	S54°22'05"E	81.78'
L4	S24°19'36"E	328.09'

CALLS WITH TRACT 4

NUM	BEARING	DISTANCE
L1	S24°19'36"E	328.09'
L2	S54°22'05"E	81.78'
L3	S16°30'39"W	52.15'
L4	S27°31'59"W	314.44'



- LEGEND**
- 5/8" ROD
 - ⊕ UTILITY POLE
 - ⊙ 1/2" ROD
 - ⊗ PK NAIL SET THIS SURVEY
 - MEANDER POINT
 - IRON PIPE FOUND
 - STEEL STAKE OR POST
 - △ STONE OR CONCRETE MONUMENT
 - TREE
 - PROPERTY LINE
 - *- FENCE

RETRACEMENT SURVEY FOR KATE DOWELL ESTATE STEARNS TRACT

CALLS WITH TRACT 1

NUM	BEARING	DISTANCE
L1	S74°33'57"W	14.53'
L2	N79°18'59"W	28.92'
L3	N82°27'42"W	57.79'
L4	S87°40'24"W	99.58'

NUM	ARC	RADIUS	BEARING	DISTANCE
C1	261.92'	571.51'	S87°38'20"W	259.66'

CALLS WITH TRACT 2

NUM	BEARING	DISTANCE
L1	N83°27'12"E	292.12'
L2	N15°26'12"W	99.47'
L3	S74°33'57"W	285.26'
L4	S11°54'18"E	54.42'

CALLS WITH TRACT 3

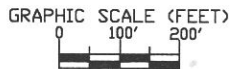
NUM	BEARING	DISTANCE
L1	N83°27'12"E	198.34'
L2	N17°50'40"W	130.18'
L3	S74°33'57"W	190.19'
L4	S15°26'12"E	99.47'

**TOTAL AREA
33.822 ACRES**

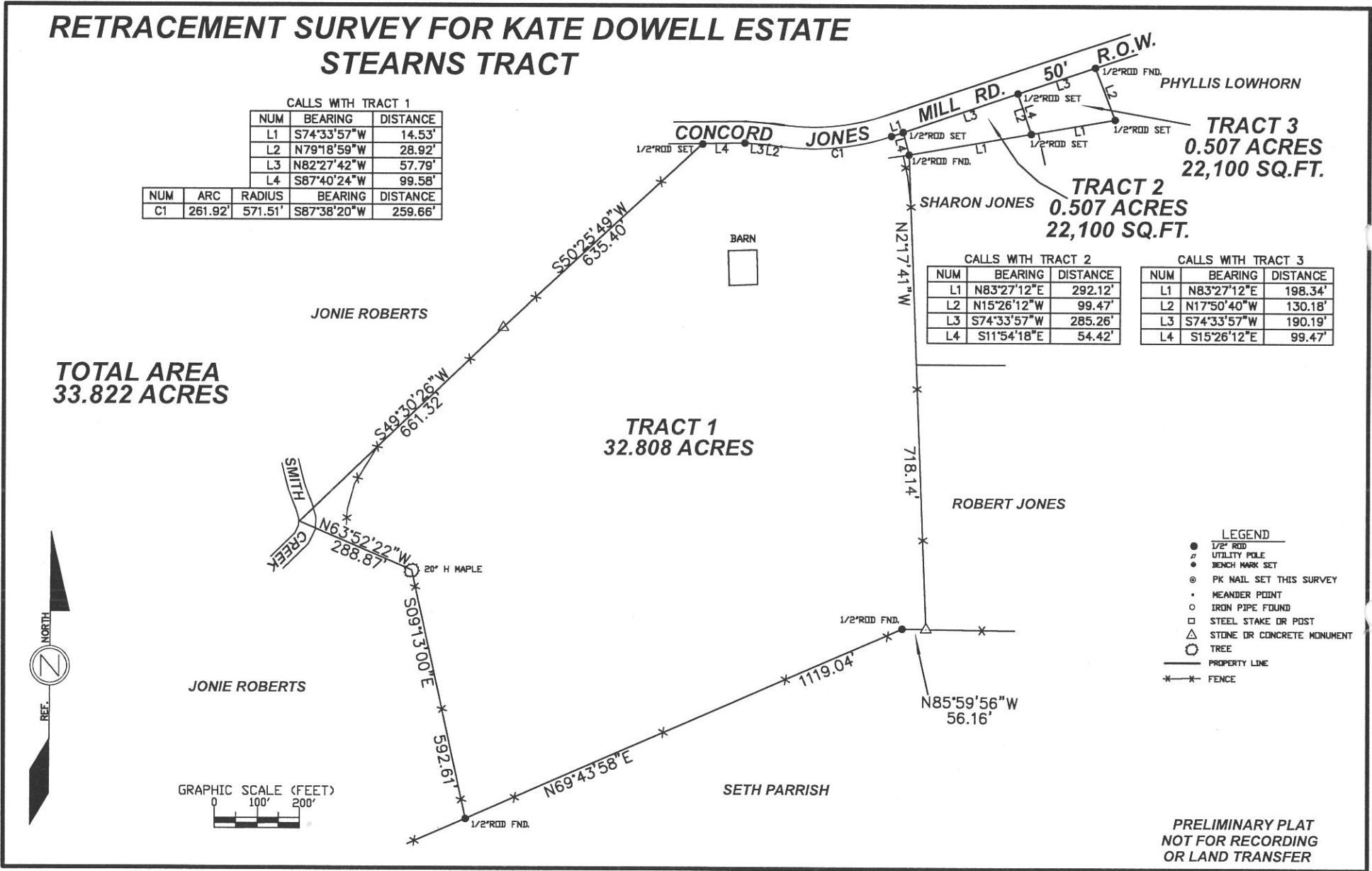
**TRACT 1
32.808 ACRES**

**TRACT 2
0.507 ACRES
22,100 SQ.FT.**

**TRACT 3
0.507 ACRES
22,100 SQ.FT.**



- LEGEND**
- 1/2" ROD
 - UTILITY POLE
 - ⊙ BENCH MARK SET
 - ⊙ PK NAIL SET THIS SURVEY
 - MEANDER POINT
 - IRON PIPE FOUND
 - STEEL STAKE OR POST
 - △ STONE OR CONCRETE MONUMENT
 - TREE
 - PROPERTY LINE
 - *-*- FENCE



**PRELIMINARY PLAT
NOT FOR RECORDING
OR LAND TRANSFER**



FARM 2

31.706 ACRES

ABD.
HOUSE

BARN

TRACT 2 TRACT 3
0.507 ACRES 0.507 ACRES

BARN

TRACT 1
32.808 ACRES

FARM 3



