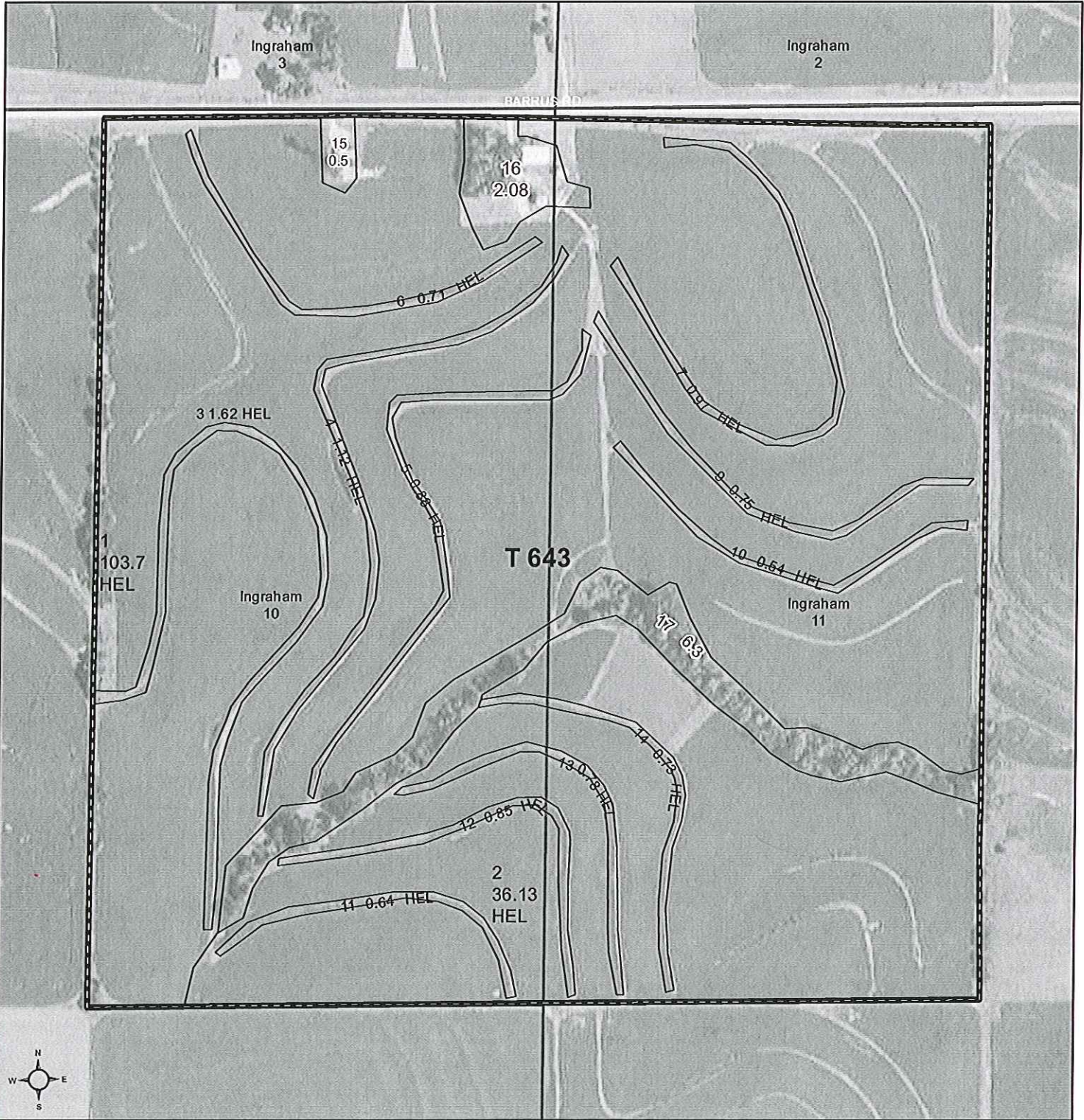




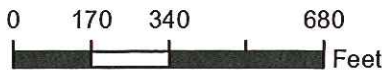
United States  
Department of  
Agriculture

# Mills County, Iowa



**Common Land Unit**

- Non-Cropland
- Cropland
- Tract Boundary
- PLSS



2017 Program Year  
Map Created January 26, 2017

**Wetland Determination Identifiers**

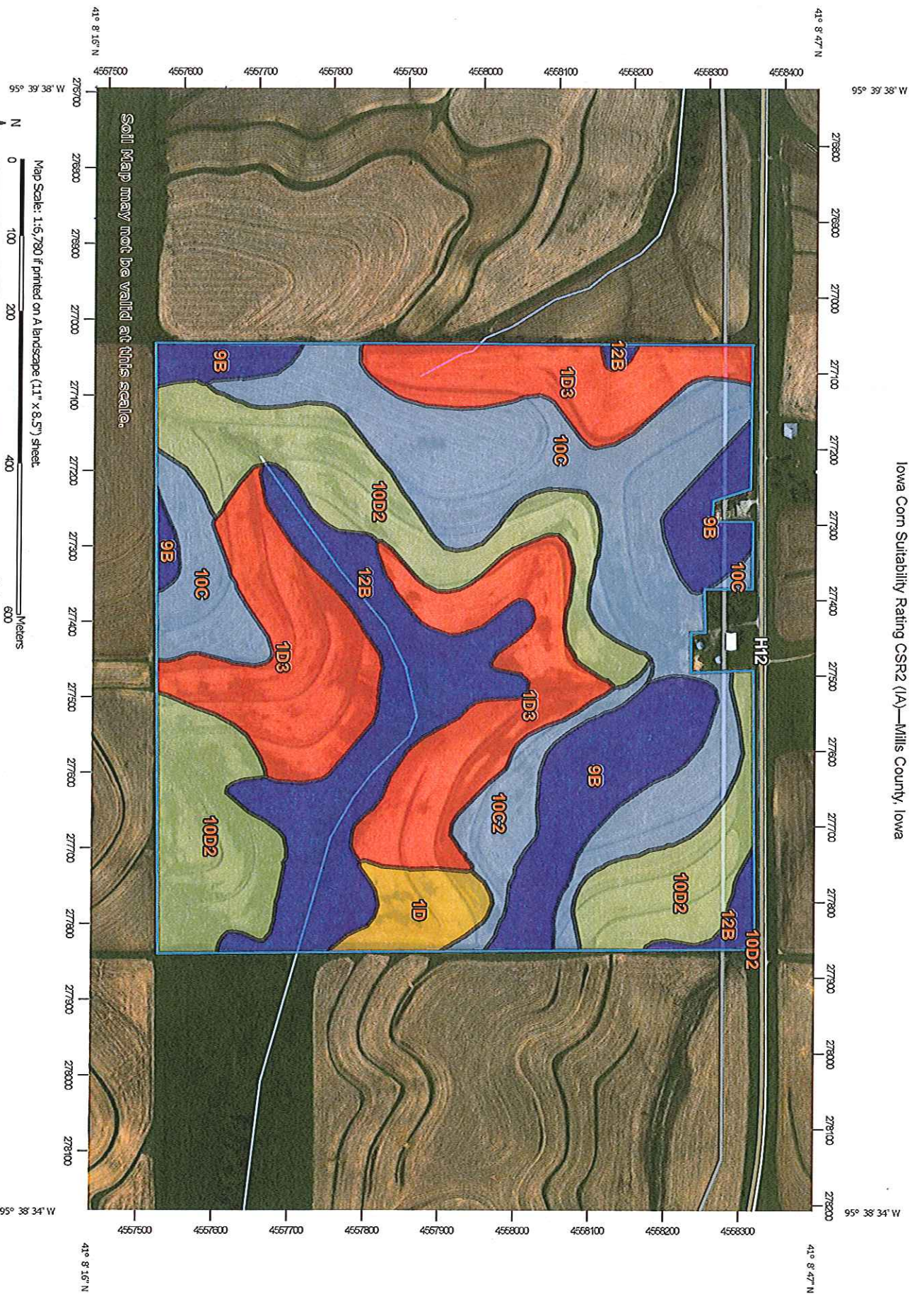
- Restricted Use
- Limited Restrictions
- Exempt from Conservation Compliance Provisions

Tract Cropland Total: 149.42 acres

Farm 4051  
Tract 643

United States Department of Agriculture (USDA) Farm Service Agency (FSA) maps are for FSA Program administration only. This map does not represent a legal survey or reflect actual ownership; rather it depicts the information provided directly from the producer and/or National Agricultural Imagery Program (NAIP) imagery. The producer accepts the data 'as is' and assumes all risks associated with its use. USDA-FSA assumes no responsibility for actual or consequential damage incurred as a result of any user's reliance on this data outside FSA Programs. Wetland identifiers do not represent the size, shape, or specific determination of the area. Refer to your original determination (CPA-026 and attached maps) for exact boundaries and determinations or contact USDA Natural Resources Conservation Service (NRCS).

Iowa Corn Suitability Rating CSR2 (A) - Mills County, Iowa



Soil Map may not be valid at this scale.

Map Scale: 1:6,780 if printed on a landscape (11" x 8.5") sheet.



Map projection: Web Mercator Corner coordinates: WGS84 Edge tics: UTM Zone 15N WGS94