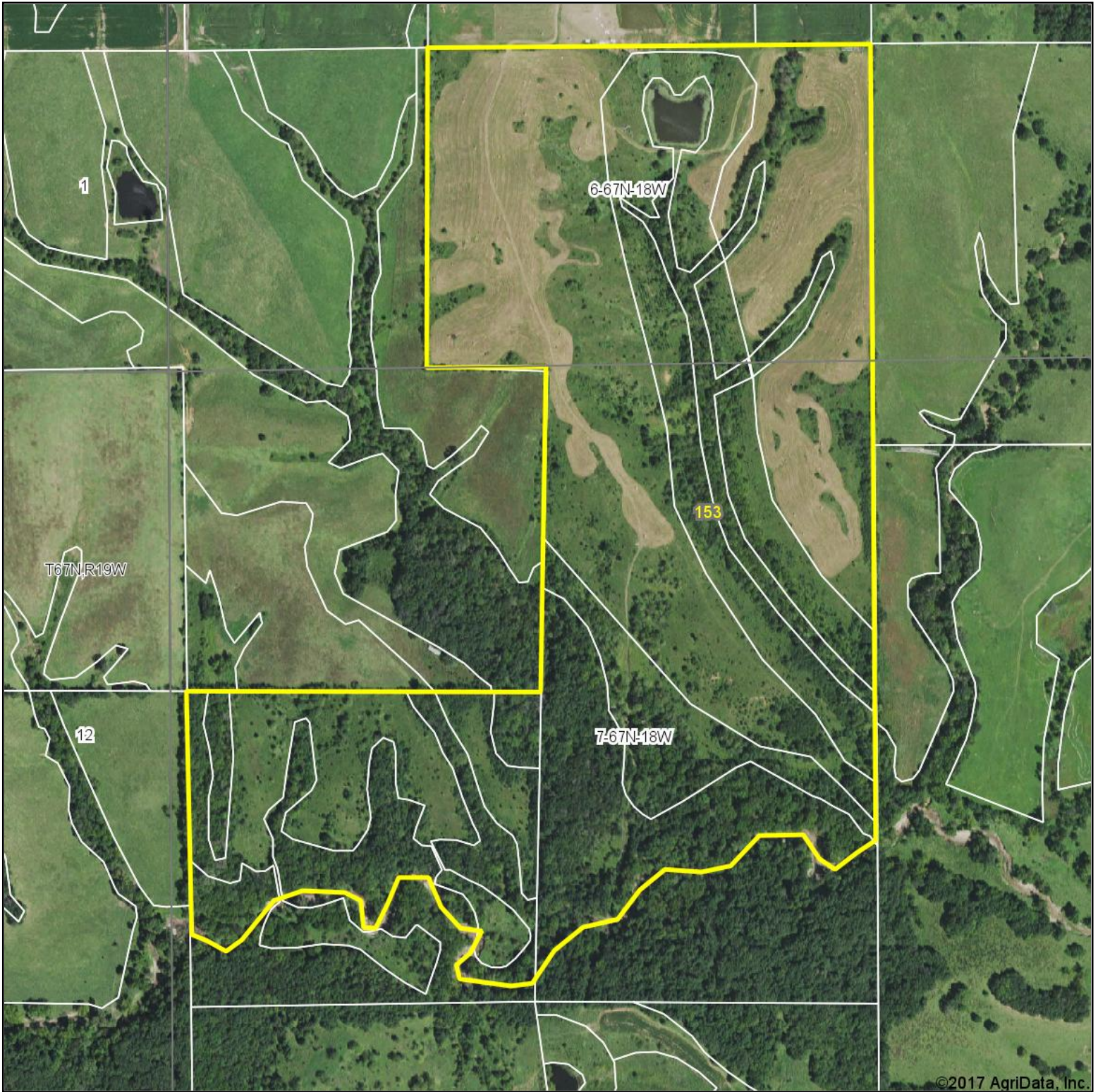


Aerial Map



©2017 AgriData, Inc.

map center: 40.621559, -92.976942



7-67N-18W
Appanoose County
Iowa



7/27/2017



TROPHY
PROPERTIES AND AUCTION
LAND (RECREATIONAL) RESIDENTIAL

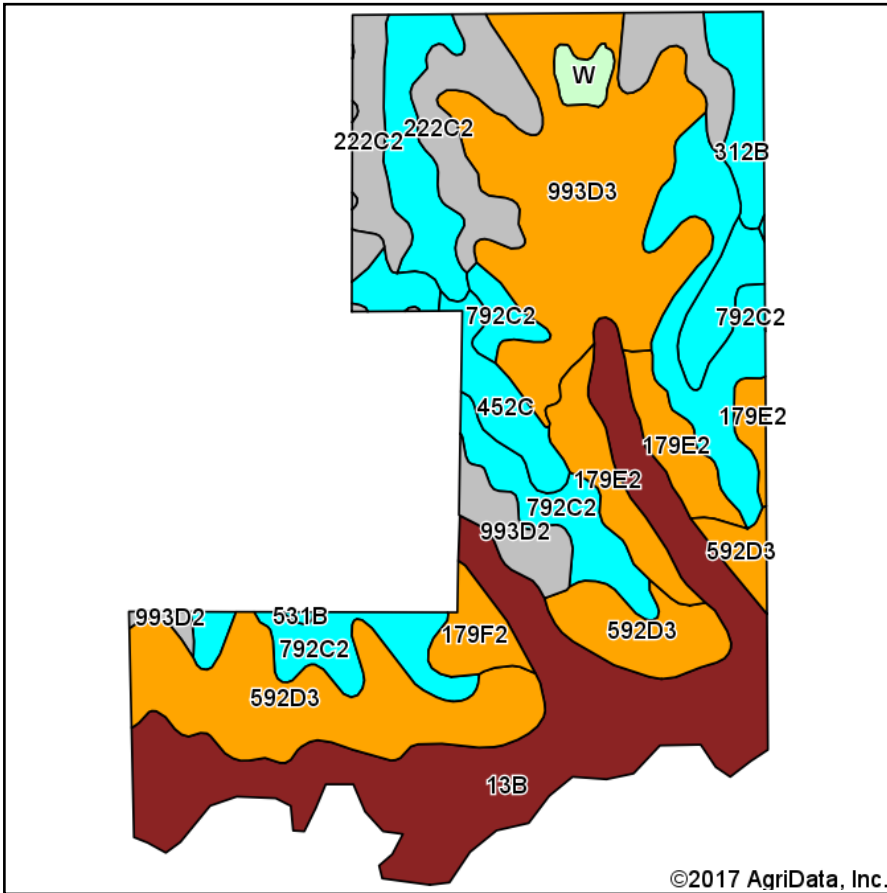
Maps Provided By:



© AgriData, Inc. 2017

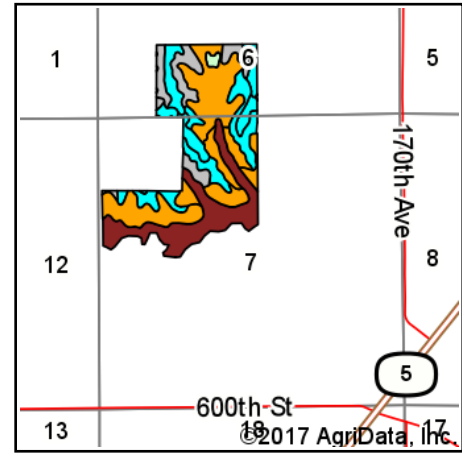
www.AgriDataInc.com

Soils Map



Soils data provided by USDA and NRCS.

©2017 AgriData, Inc.



State: **Iowa**
 County: **Appanoose**
 Location: **7-67N-18W**
 Township: **Pleasant**
 Acres: **153**
 Date: **7/27/2017**



TROPHY
 PROPERTIES AND AUCTION
LAND | REAL ESTATE | RESIDENTIAL

Maps Provided By:



© AgriData, Inc. 2017

www.AgriDataInc.com



Area Symbol: IA007, Soil Area Version: 22

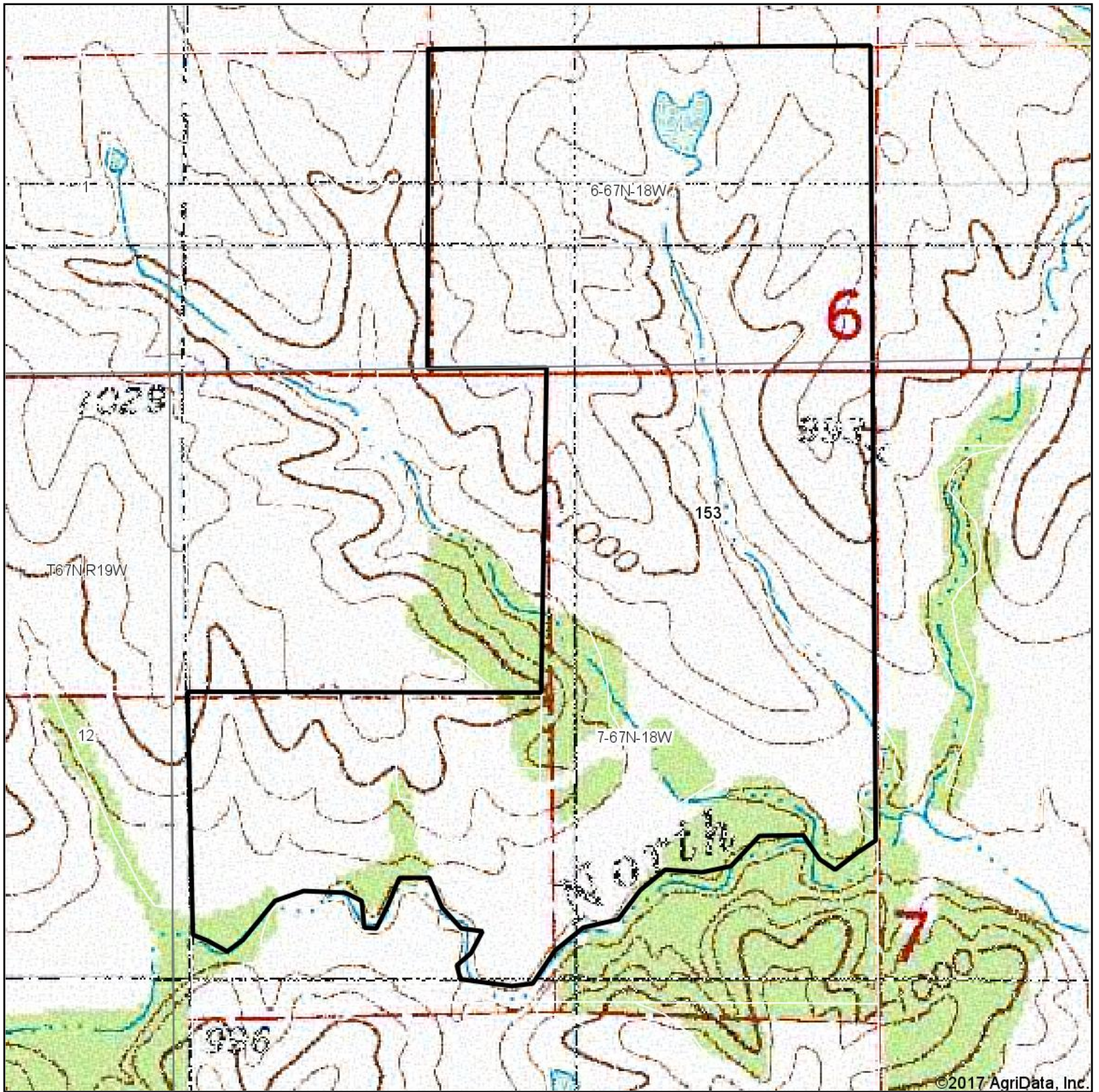
Code	Soil Description	Acres	Percent of field	Non-Irr Class Legend	Non-Irr Class *c	CSR2**	CSR
13B	Olmitz-Vesser-Colo complex, 2 to 5 percent slopes	35.58	23.3%		IIw	79	68
993D3	Armstrong-Gara complex, 9 to 14 percent slopes, severely eroded	25.49	16.7%		VIe	19	15
792C2	Armstrong loam, 5 to 9 percent slopes, moderately eroded	22.64	14.8%		IIIe	51	26
592D3	Mystic soils, 9 to 14 percent slopes, severely eroded	22.34	14.6%		VIe	5	5
222C2	Clarinda silty clay loam, 5 to 9 percent slopes, moderately eroded	13.60	8.9%		IVw	34	25
312B	Seymour silt loam, 2 to 5 percent slopes	9.65	6.3%		IIIe	64	60
179E2	Gara loam, 14 to 18 percent slopes, moderately eroded	8.88	5.8%		VIe	24	33
452C	Lineville silt loam, 5 to 9 percent slopes	6.46	4.2%		IIIe	48	35
993D2	Armstrong-Gara loams, 9 to 14 percent slopes, moderately eroded complex	4.21	2.8%		IVe	22	20
179F2	Gara loam, 18 to 24 percent slopes, moderately eroded	2.73	1.8%		VIe	12	13
W	Water	1.31	0.9%			0	0
531B	Kniffin silt loam, 2 to 5 percent slopes	0.11	0.1%		IIIe	55	58
Weighted Average						41.2	33.1

**IA has updated the CSR values for each county to CSR2.

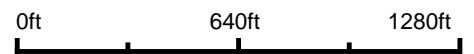
*c: Using Capabilities Class Dominant Condition Aggregation Method

Soils data provided by USDA and NRCS.

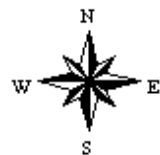
Topography Map



map center: 40.621559, -92.976942



7-67N-18W
Appanoose County
Iowa



7/27/2017



TROPHY
PROPERTIES AND AUCTION
LAND/RECREATIONAL/RESIDENTIAL

Maps Provided By:



© AgriData, Inc. 2017

www.AgriDataInc.com