



2005 JD 6715 MFWD w/ JD 740

White Pine Ranch Equipment

Live AUCTION



2005 JD 5425 MFWD w/ JD 542

TUESDAY, AUGUST 29TH, 2017 • 12:00 NOON
Owner: R. Larry Gearhart • Location: 714 South Fork Flatwillow Rd., Grass Range, MT

Driving Directions:
33 miles from Lewistown: Go south 9 miles on Upper Spring Creek Rd (MT 238), turn left on Forest Grove Rd, go 10 miles to Forest Grove and turn right on Sure Nuff Rd, go 14 miles and turn right on S. Fork of Flatwillow Rd, go 1 mile to auction site.
21 miles from Grass Range: Go south 15 miles on Tyler Cutoff Rd, turn right on Upper Flatwillow Rd, go 6 miles and turn left on S. Fork of Flatwillow Rd, go 1 mile south
48 miles from Roundup: On Hwy. 87, north 25 miles, then west on Upper Flatwillow Rd. 23 miles, 1 mile south to auction site. **Watch for Auction Arrows!**



JD 567



2006 JD 4895



JD 348



Brillion 1241 Cultivator



2013 Chevrolet 3500 HD



2013 Chevrolet 3500 HD



2005 Honda Rancher



2003 PJ 16'



200- Featherlite 20'



2001 Featherlite, 15'



1999 Kirt 16'



Crary Chipper



Rowse



Hesston 3983



NH Stackline 1033



Land Roller



JD GX345



JD 610



Powder River



Easy Way Tub

TRACTORS & CRAWLERS

2006 JD 6715 MFWD w/ JD 740 Classic loader, 6.8L 6 cyl. diesel, 2613 hrs., 105 hp, CAH, 8' bucket w/ grapple, dual pto, dual rear hyd., 3 pt., rubber 50%, always shedded, excellent service records, s#L06715D485739
2005 JD 5425 MFWD w/ JD 542 loader, 4.5L 4 cyl. diesel, 65 hp, 1939 hr., CAH, 7' bucket, dual pto, dual rear hyd., 3 pt., ft. rubber 80%, rear rubber 40%, always shedded, excellent service records, s#LV5425R145152

HAYING EQUIPMENT

2006 JD 4895 swather, 16' header, auger, cond., 966 hrs.
2004 JD 567 round baler, mega wide, 540 pto, twine-only
JD 348 square baler, 540 pto, needs work
Hesston 3983 v-rake, 12-wheel
Sitrex RP-3 windrow turner, 3 wheel, 3 pt.
(2) NH Stackliner 1033 bale wagons, pull-type, 540 pto
Rowse hyd. dump rake, excellent condition

Live Online Bidding available @ www.ShobeAuction.com

PICKUPS

2013 Chevrolet 3500 HD, 4 x 4, w/ HydraBed HB200 bale handler, 6.0L Vortec V-8 gas, 90,600 mi., auto, loaded, new rubber
2013 Chevrolet 3500 HD Silverado, 4 x 4, ext. cab, 6.0L Vortec V-8 gas, gas, auto, 70,000 mi., leather, loaded, grill guard, running boards, long-box

TRAILERS

2000 Featherlite Model 8120 stock trailer, gn, alum., 7' x 20', tailgate w/ slider, center gate w/slider, escape dr., aluminum corrugated floor
2001 Featherlite stock trailer, bp, alum., 15', tailgate w/ slider, center gate, escape door, 15" rubber 50%, alum. floor w/ mats
1999 Kirt flatbed trailer, bp, 16', wood deck, 15" tires

2003 PJ flatbed trailer, bp, 16' plus 2' beaver tail, wood deck, 15" tires, stow-away ramps, 2" ball

LIVESTOCK EQUIPMENT

Easy Way portable tub & alley, Pearson auto head catch, 36' total length
Powder River portable loading chute, 12', cable hoist
Powder Mountain horsehay feeders, (2) 10', (1) 5'

ATV'S & LAWNMOWER

2005 Honda Rancher TRX400FA, 4x4, elec. shift, low miles, excellent condition!
(2) 2002 Honda Rancher TRX350, 4x4, manual, elec. start
JD GX345 riding mower, 54" deck, 20 hp Kawasaki eng., excellent condition

ATTACHMENTS & 3 PT. EQUIP.

JD Worksite Pro BL8 hyd. blade, 8', quick attach loader mt.
Hoelscher 150 bale accumulator grapple fork, 12-bale, loader mount
MDS HRB612 rock bucket w/ grapple, quick attach loader mt., 6', 1.5" tines
MDS 2602 2-prong bale fork, loader mount
Worksaver 2-prong bale fork, loader mount
JD MX6 mower, 3 pt., 6'
JD 610 chisel plow, 3 pt., 12'
Crary Bearcat 71854 wood chipper, 3 pt., 540 pto

Tarter Terrain Tough seed broadcaster, pull-behind Tandem disk, 3 pt., 7'

OTHER EQUIPMENT

Land Roller, 12', water filled, factory-made, good condition
JD 370 manure spreader, 540 pto, single axle, 11' box, floor needs work
JD TO115 tandem disk, 12'
Brillion M1241 culti-packer, 11'
Fimco slide-in sprayer, 28' booms, reel, 200 gal. tank
Drag harrow, chain style, 12'
JD 250 skidsteer cab (pieces)
(2) Herd M96 broadcast seeders

Terms: Cash or Check Day of Auction.
This is a Live On-Site Auction with On-line Bidding Available. On-site terms are Cash or Check day of auction. See website for online bidding information & terms.



JAYSON & KYLE SHOBE ~ AUCTIONEERS & REALTORS
408 WEST MAIN • LEWISTOWN, MT 59457 • OFFICE: 406-538-5125
Jayson: 406-366-5125 • Kyle: 406-366-0472
e-mail: jayson@shobeauction.com • kyle@shobeauction.com
www.ShobeAuction.com



Trophy Wildlife Mounts & Rugs

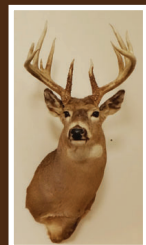
Owner: R. Larry Gearhart,
714 South Fork Road, Forest Grove, MT

OPEN HOUSE/INSPECTION DATES:
Saturday, Aug. 19th, 2-4 P.M. • Sunday, Aug. 20th, 2-4 P.M.
Inspection will take place at the White Pine Ranch located 33 miles southeast of Lewistown at 714 South Fork Road, Forest Grove, MT

49
Amazing Mounts

TIMED ONLINE-ONLY AUCTION

Auction Closes Thursday, August 24th, 2017 6:30 P.M. MDT



Whitetail
6x5



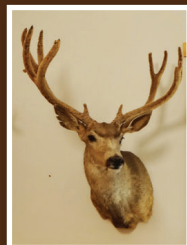
Whitetail
10x9 non-typical



Whitetail
8x8 non-typical



Rocky Mtn Elk
6x6



Mule Deer
5x4 non-typical in velvet



Mule Deer
7x9 non-typical in velvet



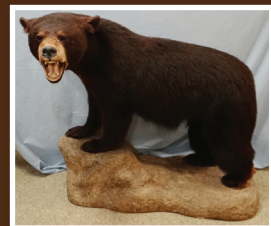
Mule Deer
4x4



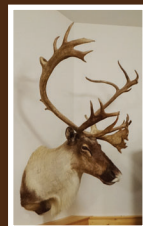
Big Horn Sheep
Full Curl



Mountain Lion



Black Bear Cub



Caribou
Double Shovel



Moose
60"



Bobcat



Grizzly Bear



Black Wolf



Grizzly Bear

Terms: The Trophy Wildlife Mounts & Rugs sell at Timed Online-Only Auction, with all bidding taking place at www.ShobeAuction.com. See complete terms on website.

www.ShobeAuction.com

White Pine Ranch Equipment Live AUCTION

TUESDAY, AUGUST 29TH, 2017 • 12:00 NOON

Owner: R. Larry Gearhart • Location: 714 South Fork Flatwillow Rd., Grass Range, MT



2005 JD 6715 MFWD w/ JD 740



2005 JD 5425 MFWD w/ JD 542



JD 567



2006 JD 4895



Hesston 3983



NH Stackline 1033



2013 Chevrolet 3500 HD



2013 Chevrolet 3500 HD



200- Featherlite 20'



2001 Featherlite, 15'

- Auctioneer's Note -

Larry Gearhart has plans to sell his ranch property and therefore is liquidating his equipment inventory. This line of ranch equipment has been very well cared for, with lots of green paint! Please note the starting time of 12 noon. There are very few small items so plan to be prompt. Thank you. - Kyle and Jayson Shobe

United
Country
Auction Services

SHOBE AUCTION
& REALTY
No One Knows The Country Like We Do

www.ShobeAuction.com • 406-538-5125