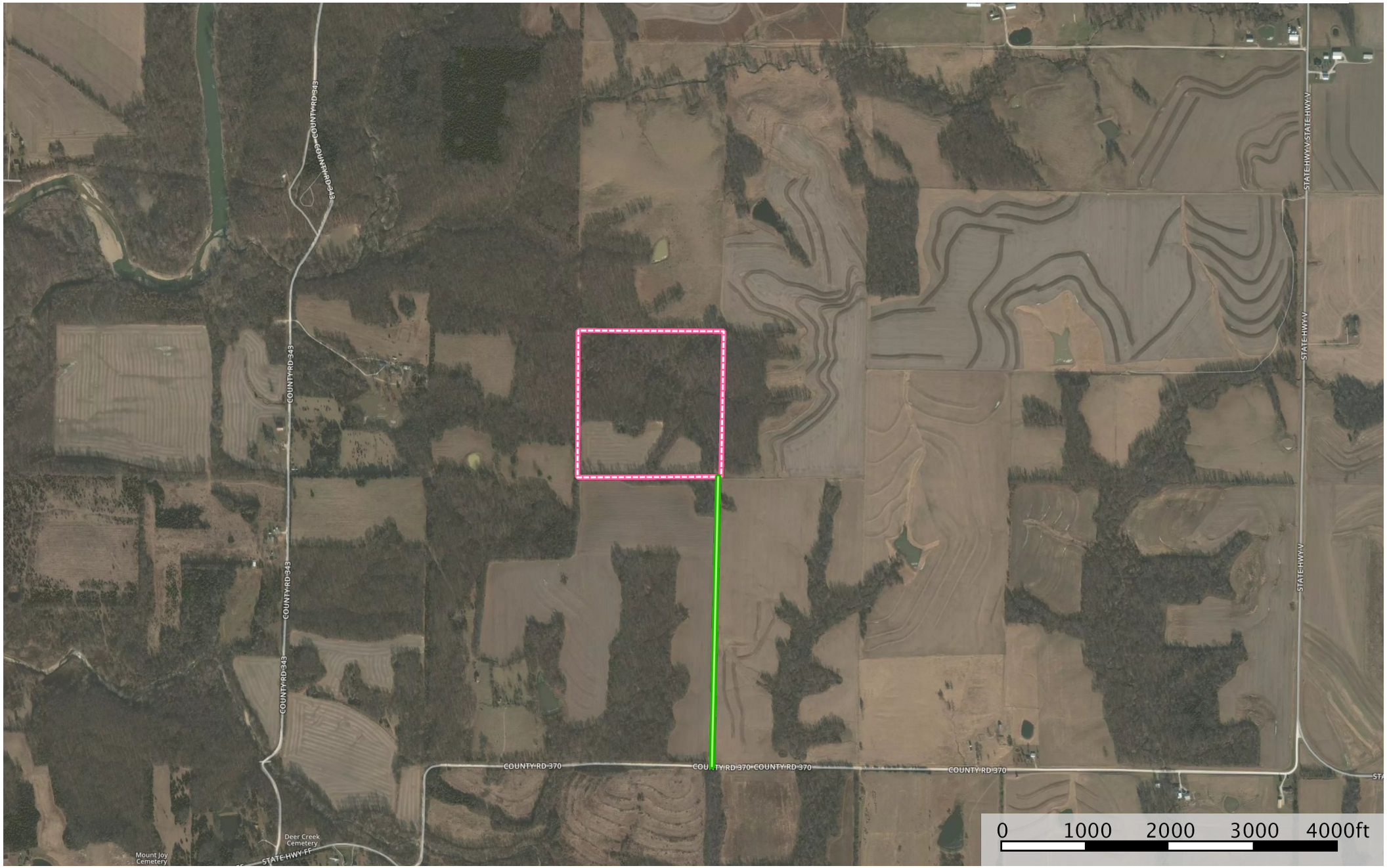


# Monroe County Land Auction

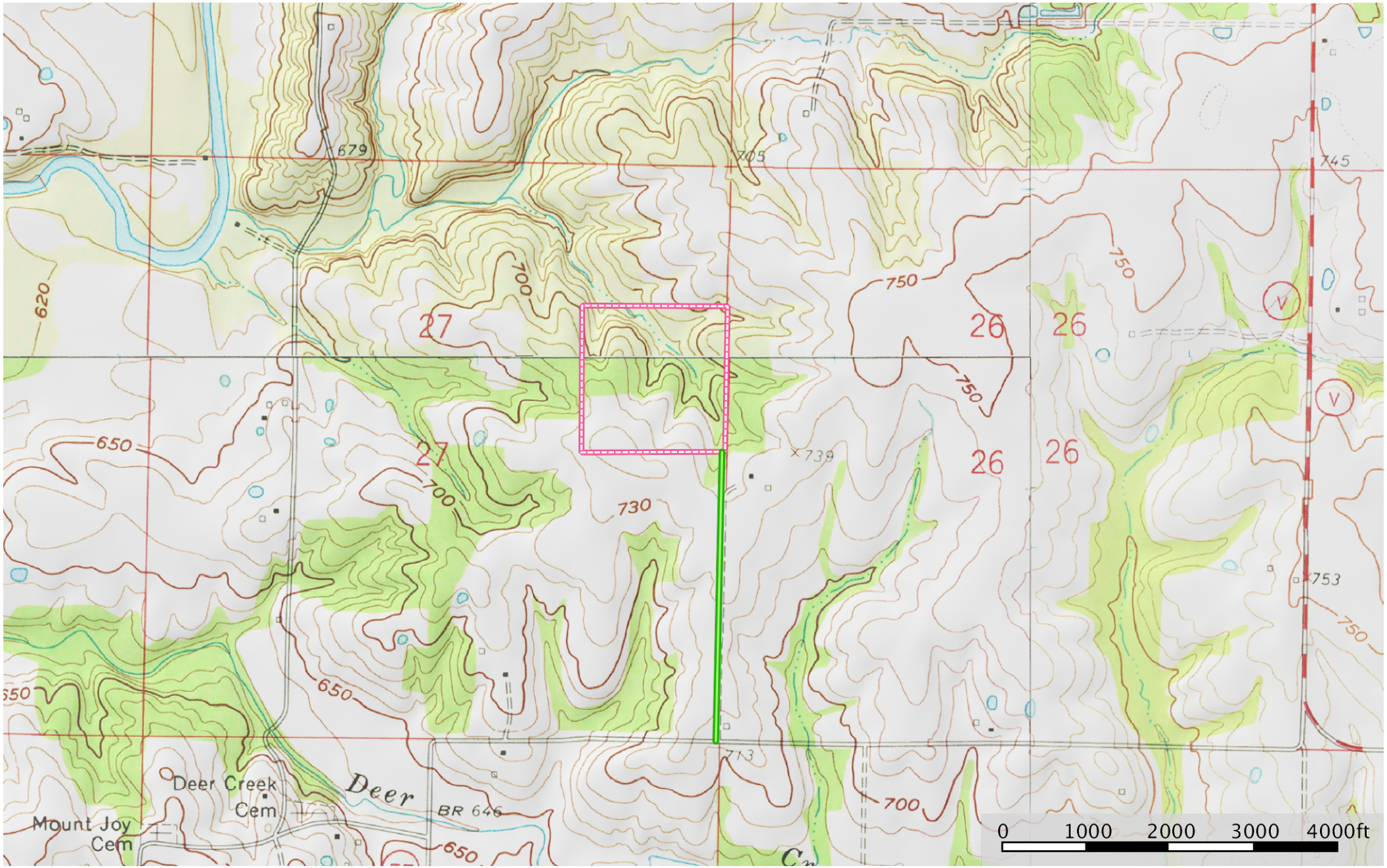
Monroe County, Missouri, 147.0 AC +/-



 Ingress / Egress       Approximate Boundary

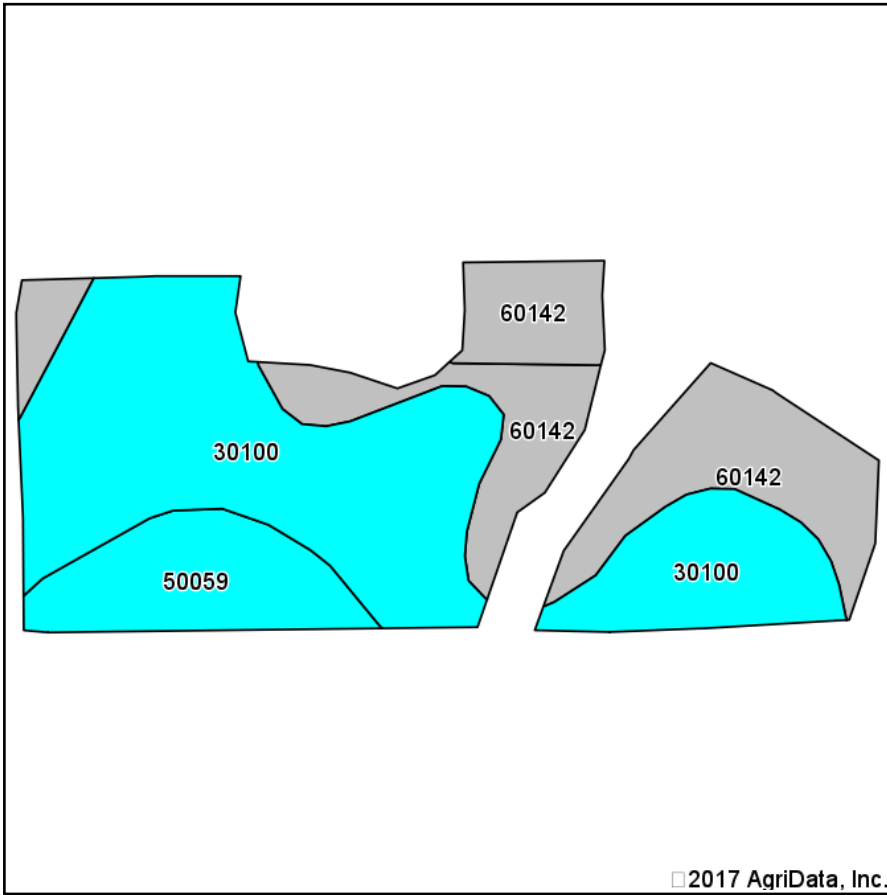
# Monroe County Land Auction

Monroe County, Missouri, 147.0 AC +/-

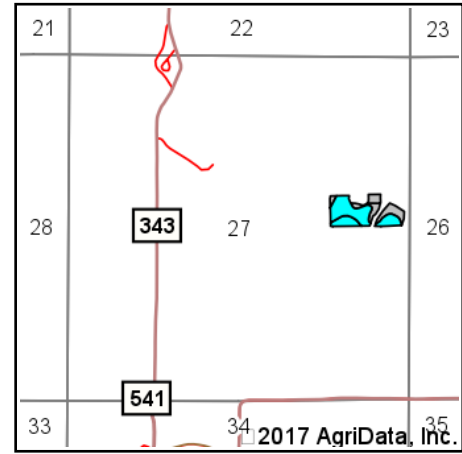


 Ingress / Egress  
 Approximate Boundary

# Soils Map



Soils data provided by USDA and NRCS.



State: **Missouri**  
 County: **Monroe**  
 Location: **27-56N-9W**  
 Township: **Washington**  
 Acres: **9.5**  
 Date: **3/27/2017**



iAuctionandRealty.com

Maps Provided By:



© AgriData, Inc. 2017

www.AgriDataInc.com



## Area Symbol: MO137, Soil Area Version: 16

Code	Soil Description	Acres	Percent of field	Non-Irr Class Legend	Non-Irr Class *c
30100	Keswick loam, 5 to 9 percent slopes, eroded	5.15	54.2%		IIIe
60142	Keswick loam, 9 to 14 percent slopes, eroded	3.10	32.6%		IVe
50059	Mexico silt loam, 1 to 4 percent slopes, eroded	1.25	13.2%		IIIe

\*c: Using Capabilities Class Dominant Condition Aggregation Method

Soils data provided by USDA and NRCS.