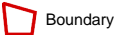
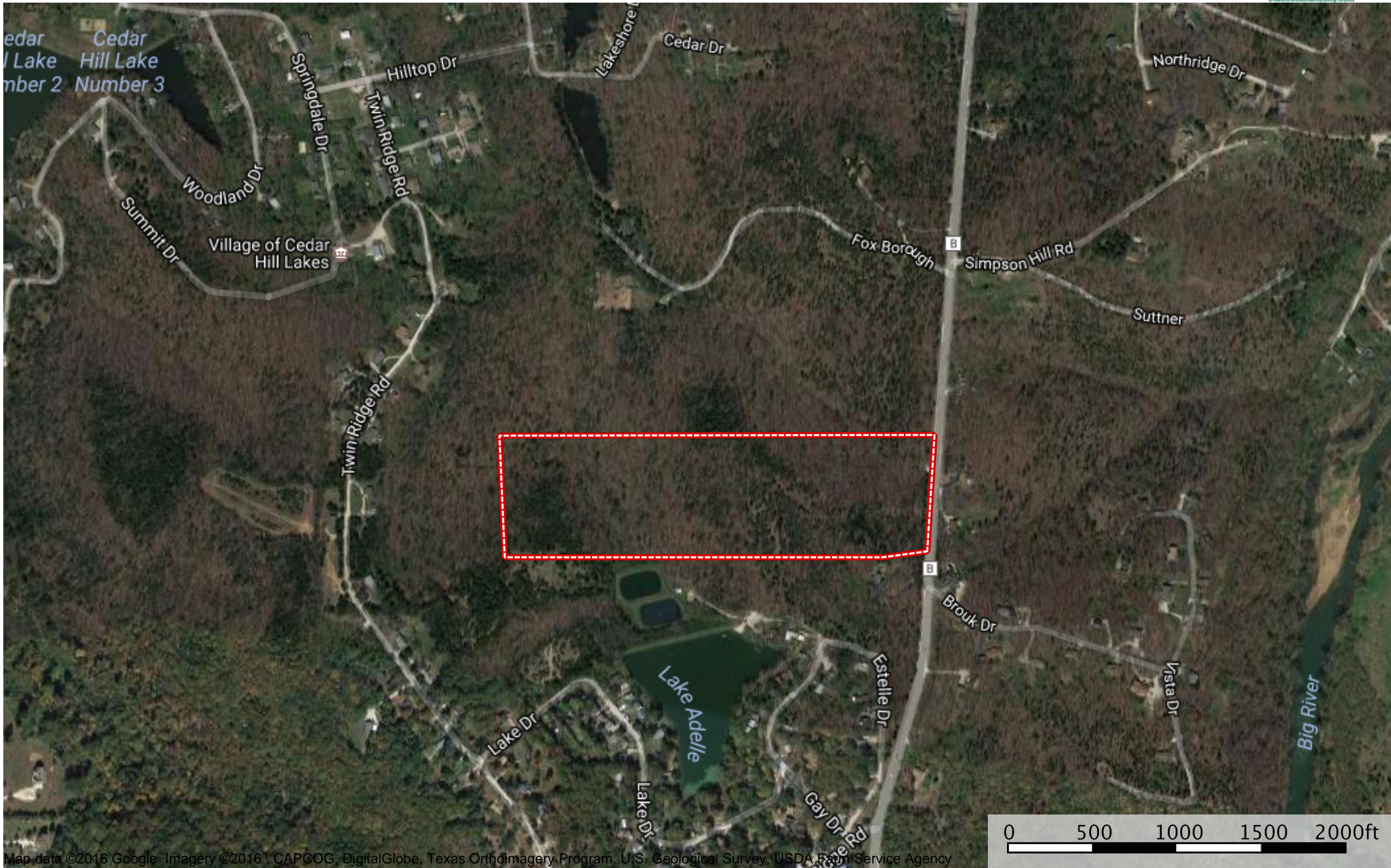


Prime Development Ground - Jefferson County, MO
Jefferson County, Missouri, 29.68 AC +/-



Boundary

JASON WALLINGFORD

P: (217)214-2752 www.iAuctionandRealty.com 520 N 30th, Suite 19, Quincy, IL 62301



The information contained herein was obtained from sources deemed to be reliable. MapRight Services makes no warranties or guarantees as to the completeness or accuracy thereof. 844.932.6277 - mapright.com