

Vintage & Classic Auto Auction

Saturday, August 13th, 2016 • 10 A.M.

Location: 612 NE Main, Lewistown, Montana
Owners: Jack Ruckman Estate & Central City Auto & RV, Lewistown, MT



1965 Chevy Corvair Monza



1959 Ford Skyliner



1927 Ford Model T Roadster



Building



Spring Buggy



Ford 8N



1964 Ford Thunderbird



1971 Buick Rivera



1970 Buick Grand Sport



1970 Chevy Caprice



1949 Plymouth Special Deluxe



1969 Lincoln Continental Mark III



1969 Fleetwood 75 Limo



1967 Thunderbird



1970 Buick Skylark

VINTAGE AND CLASSIC AUTOS

- 1959 Ford Skyliner retractable convertible, V8, auto, partially restored with new blue/white exterior paint, motorized retractable is in working condition, sells with many asst'd. parts and acces. including re-chromed bumpers, rear seat, head and tail lights, etc. A *nicely-started project on this very hard to find "classic!"*
- 1961 Ford F-100 pickup, 292 V8, 4 speed manual, 71,989 miles
- 1964 Ford Thunderbird retractable convertible, 2 door, 390 V8, auto, power steering, power brakes, swing away steering, bucket seats, stored inside for last 35 years, ready for restoration! Only 9,198 of this model were produced.
- 1965 Chevy Corvair Monza, 2 door hardtop sport coupe, 4 spd., 6 cylinder, 110 HP, 1981 new lacquer paint, 64,521 miles. *Same owner since 1979, stored inside.*
- 1966 Renault Caravelle, detachable hard top convertible, 4 cyl. liquid cooled 1100cc eng., disc brakes, 43,737 miles.
- 1967 Ford Thunderbird, 4 door hardtop, landau suicide doors, 390 V8, automatic, power steering, power brakes. *Nice running car!*
- 1968 Jeep Super Wagoneer, 360 V8 (also, sells w/ original 327 V8), auto, blue vinyl interior, luggage rack, 84,800 miles. *Ultra-rare Super Wagoneer!*
- 1969 Lincoln Continental Mark III, 460 eng., auto, red w/ white top, black leather interior, tilt steering, 97,714 miles. *Nice original condition.*
- 1969 Fleetwood 75 Limo, Cadillac, 472ci 375 HP V8, 8 passenger seating, 72,177 miles.
- 1970 Buick Grand Sport Convertible, Ram Air 455ci, turbo 400 automatic transmission, new tires, 89,774 miles.
- 1970 Buick Skylark Custom Convertible, 2 door, 350/285 HP V8 eng., factory air conditioning, tilt steering, 87,840 miles. *Needs a little touch up on some cosmetics, but a sweet little Skylark.*

- 1970 Chevy Caprice Classic, 2 door hardtop, 300 HP V8 engine, green w/ black vinyl top, green interior, 99,564 miles.
- 1971 Buick Rivera, 455/330 HP, 4bbl V8, rebuilt engine and transmission, factory a/c, 99,269 miles.
- 1982 GMC Sierra Grande, ¾-ton pickup, 4x4, 350 eng., 4 spd.
- 1986 Chevrolet Corvette, 2 door hatchback, 5.7L V8, Automatic, leather seats, removable roof, power windows/locks/mirrors, cruise control, tilt steering, air conditioning, power seat, 51,500 miles
- 1927 Ford Model T Roadster, fully restored. *Very nice condition and a great runner! (Guest consigned by Don Newton, Lewistown, MT.)*
- 1949 Plymouth Special Deluxe, fully restored-repainted to original color in 1986, seats redone, carpeting installed and visor added in 2009, & rebuilt engine in 2010. *Very nice condition and a great runner! (Guest consigned by Greg Matzick, Lewistown, MT)*
- 1979 Lincoln, Triple black, 35,000 orig miles - a barn find! *(Guest consigned by Pallett Family, Lewistown, MT)*

RESTORABLE AUTOMOBILES

- 1928-29 Dodge Bros. Six, 4 door sedan (suicide rear doors), wood spoke wheels, restorable
- 1930 Ford Model A, custom cab, restorable
- 1933 Plymouth Coupe, rumble seat, roll-down back window, restorable
- 1940 Chrysler New Yorker, 4 door (suicide rear doors), original straight 8 flathead engine with overdrive, 3spd., restorable
- 1950 Lincoln, 4 door (suicide rear doors), flat-head V8, auto, restorable
- 1957 Chevy BelAir Wagon
- (3) Ford Model T bodies, (1) Roadster, (2) Touring. *All are in nice shape and would be a good start for a restoration project.*

- 1937 Chevy Coupe street rod, 454 with nos, turbo 400, 4 link rear suspension, nova subframe, painless harness. *(Guest consigned by Pallett Family, Lewistown, MT)*

FARM & OTHER EQUIPMENT

- Ford 8N tractor, engine rebuilt with new head clutch, radiator, pistons, bearings, rings, & carburetor - less than 10 hours
- 1952 IH TD9 crawler, gas/diesel, hyd. lift, manual 9' dozer blade
- John Deere GU78 Worksite Pro Quik-Tatch utility grapple, for skid steer, 77", excellent condition!
- Tommy Lift lift gate, sells w/ 2 tailgates (factory gate included)
- Yamaha Exciter 440 snowmobile, good runner
- Antique ditcher

BUILDING

- Metal building, 40' x 72'; (4) overhead doors: 16'x11'h, 16'x10'h, 16'x7'h, 10'x7'h, (2) 3'0 walk-through doors, loft with lam-beams to support automobiles, metal siding & roof, frame walls, includes wiring and everything from the concrete up! **Buyer must remove by August 31, 2016.**

HORSE DRAWN EQUIPMENT & WESTERN GEAR

- Spring buggy, restored, wooden wheels, steel rims, shaves and 2-horse hitch, *excellent condition!*
- Trotter racing cart, 2 wheel, shaves, rubber tires
- Vintage solid brass stirrups
- Batwing chaps, unmarked
- Leather saddle bags
- Slick fork loop seat saddle, restored, sq. skirts

AUTO PARTS, TOOLS & ACCESSORIES

- Crown propane boiler, 112,500 btu, good working condition
- 1968 Firebird convertible parts: seat, top, rams and boot
- 1967 T-Bird parts: bench seat, 2 bucket seats, speedometer & console cover
- 1965-67 VW bug quarter glass, original and complete, 1 pair
- Dodge Brothers vintage auto luggage rack,
- Vintage pickup cowl
- Ford Model T or A truck tailgate
- 1926-27 Ford Model T windshield w/brackets
- 1924-27 Jewett windshield w/ brackets
- 1924-26 Star windshield w/brackets
- Model A bumper, nice condition
- Model A fender with wheel well
- Pair of Dodge vintage fenders
- Pair of Model A sedan rear fenders
- GM body mouldings, 1955-57, New Old Stock
- GM body mouldings, 1955-57, New Old Stock
- Sun Diagnostic Motor Tester
- Mark IV under-dash a/c unit, complete

- American Bosch "Nostalgia Air" radio, pre 1936, model 636
- (4) Model T or A shock absorbers, appear unused
- Model T coil pack
- Model A carburetors (4)
- (5) Model A and others carburetors
- (6) GM truck hvy. duty Holly 4BBL carburetors
- (2) boxes vintage ignition parts, many with orig. boxes
- 1933-31/ 28-29 Model A motor meters
- Dietz auto kerosene lantern
- Pair vintage auto horns, chromed
- (3) Model T jacks
- Vintage Little Giant tap and die set
- Whitworth (British) sockets and end wrenches, Craftsman
- Brass tire pump
- Model A bezels (4)
- Sun Distributor Tester
- (2) Chevy Camaro spoiler ends, new in box
- (2) Stainless steel boat props, for Alpha 1, both 23 pitch
- Model T truck box, restored
- Model T sedan fenders, 1 pair
- Model T wish bones, doors, etc.
- (2) Model T spare tire covers
- (5) Ford Model T rear wheels
- (9) Ford Model T front wheels
- (2) Model A heater manifolds
- Model A radiator shells, (4)
- Model A fenders, hood covers, running boards, etc.
- 1930-31 Model A engine side panels
- Model A & T starters, assorted
- Model T and A steering wheels
- Assorted vintage radiators, 1 for early Ford tractor
- (2) winter fronts, vintage, louvered
- Vintage Plymouth radiator shell

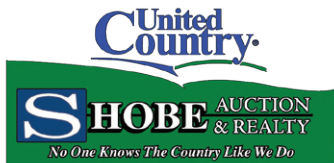
Live Internet Bidding @ www.ShobeAuction.com



JAYSON & KYLE SHOBE ~ AUCTIONEERS & REALTORS
 408 WEST MAIN, LEWISTOWN, MT 59457 • OFFICE: 406-538-5125
 Jayson: 406-366-5125 • jayson@shobeauction.com
 Kyle: 406-366-0472 • kyle@shobeauction.com
www.ShobeAuction.com



Preview: Friday, August 12th, 1:00 - 7:00 P.M.



408 West Main St
Lewistown, MT 59457

FIRST CLASS MAIL

FIRST CLASS MAIL
AUTO
US POSTAGE PAID
LEWISTOWN, MT
PERMIT 181

Auction Schedule

- 10 A.M. Antiques, Auto Tools & Accessories
- 11 A.M. Western Gear, Horse Drawn Equipment, Building
- 12 P.M. Automobiles, Farm Equip.
- 2 P.M. Auto Parts

See online catalog for sale order.

Terms: Cash or Check Day of Auction • Lunch Available

Vintage & Classic Auto Auction

**Saturday,
August 13th, 2016
10:00 A.M.**



1930 Ford Model A



1940 Chrysler New Yorker



1979 Lincoln



1986 Chevrolet Corvette



1957 Chevy BelAir Wagon



1968 Jeep Super Wagoneer



1961 Ford F100

AUTO PARTS, TOOLS & ACCESSORIES CONT'D

- Many assorted vintage head lights
- Many assorted Model T lights
- (5) auto spot lights
- Dodge vintage tail lamp
- Model A heater duct
- Many assorted auto radios
- Pontiac GTO or Tempest dash and hood mount
- Piston expanders, in original boxes
- (2) new Chevy replacement tailgates, 1980 - 2001
- (2) new Chevy Lt & rt front fenders
- 1967 Chevy Camaro rt. Froquerter panel, new GM
- 1977 Mustang Cobra hood scoop, original
- Transfer flow fuel tank for pickup box, 20-25 gal, used
- Luverne Chevy pickup bumper, new in box
- 1967 Chevy Camaro parts: hood, header panel, & other
- 100 +/- assorted wheel covers
- Assorted vintage steering wheels
- (16) +/- Chevy pickup 6 hole rally wheels
- (4) Lincoln wire wheels
- GM pickup rally wheels
- (25) +/- wire wheels, vintage
- Ass'd auto glass including many doors, backs & windshields
- (9) Pickup grill guards, ass'd. makes, modern pickups (90's - current), incl. RanchHand for 2011 GM2500

- (4) +/- Bumpers for '88-98 GM
- Chevy tailgate, '73-81
- Safari pickup cap, mid-'00's GM shortbox, 82"L x 72.5"W
- (3) Cadillac STS wheels
- Pickup work rack, 8'L
- (9) Pickup tool boxes
- Pickup slide-in box & headache rack, 8'L
- (8) Hitch Receivers & mounts, ass'd makes & models

ENGINES

- 2002 Ford 7.3 l powerstroke diesel engine
- 2011 Ford F250 6.2l gas engine core, auto trans, 4x4 (55K miles)
- 2006 GM 5.3 l for parts
- 1930-31 Ford Model A engine, rebuilt
- Wisconsin gas engine, possibly tractor or baler
- 302 Ford engine with auto trans., low mileage
- Chevy 3100 V-6 engine, low mileage, good runner
- (3) Model T engine heads

ANTIQUES & COLLECTIBLES

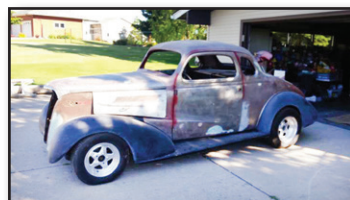
- Assorted vintage bottles, large collection
- Steamer trunk with tray
- Many assorted Hemmings Motor News magazines, 1970's - 1980's
- Many ass'd. antiques



Crawler



JD GU78 Grapple



1937 Chevy Coupe



**Auction Location: 612 NE Main
Lewistown, Montana**

**Owners: Jack Ruckman Estate & Central
City Auto & RV, Lewistown, MT**

www.ShobeAuction.com